



3226 / 3234 Nissan Rogue Sport 2017-Present

Installation Instructions

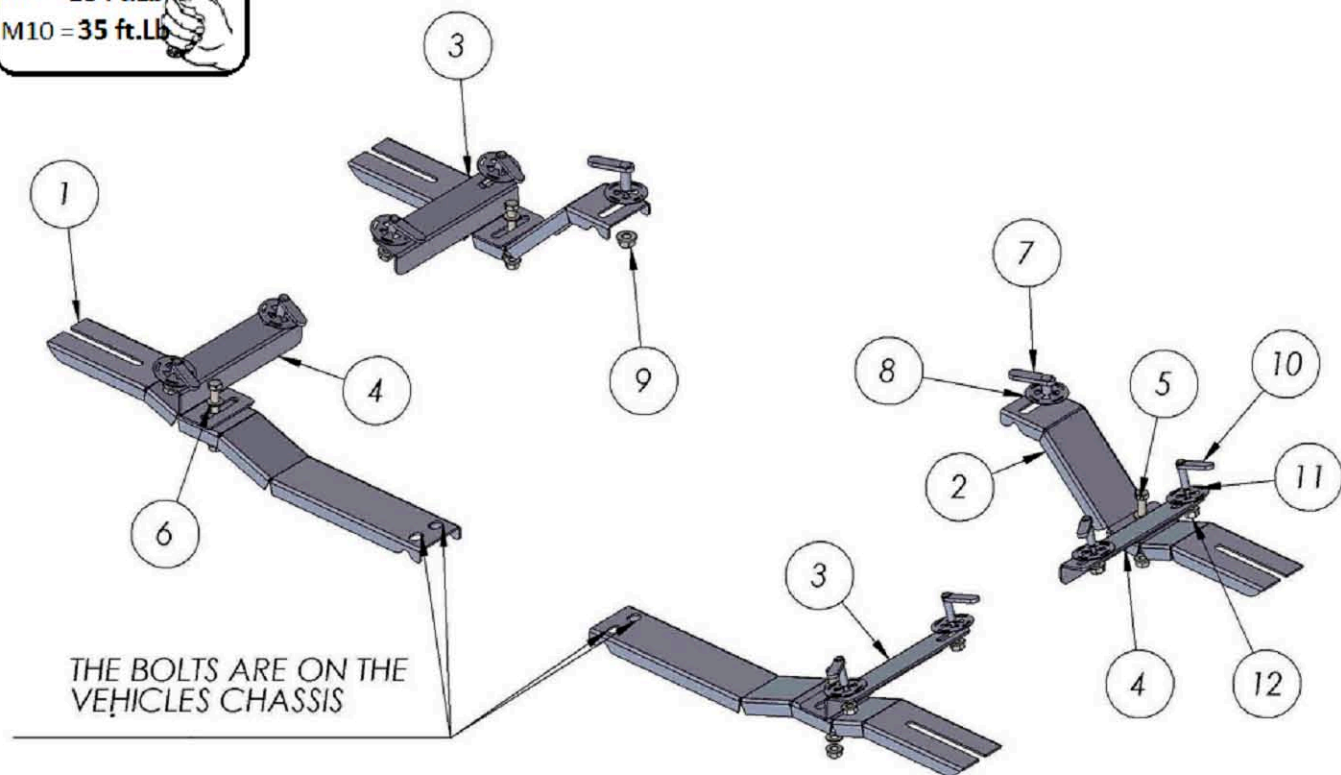


60 Minutes

M6 = 8 Ft.Lb

M8 = 18 Ft.Lb

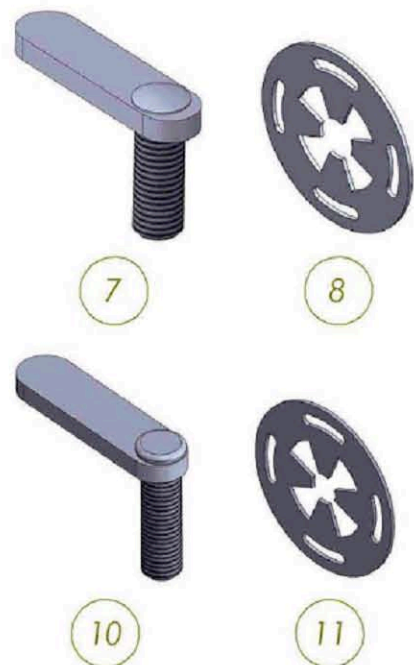
M10 = 35 Ft.Lb

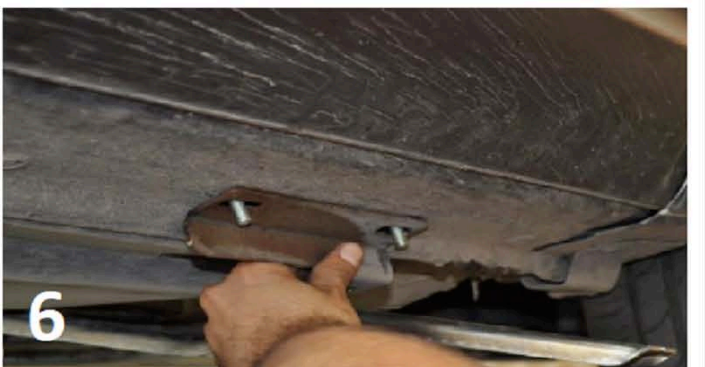
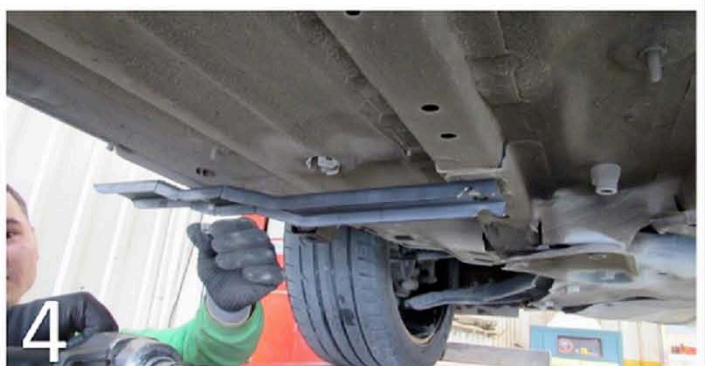
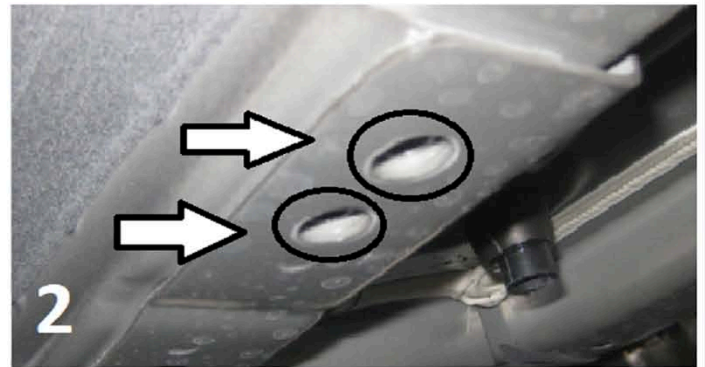


FRONT



ITEM/NO	PART NAME	QTY
1	3226751F0	2
2	3226751B0	2
3	3226751FB1	2
4	3226751FB1	2
5	DIN 6921 FLANGE BOLT M8 x 30	4
6	DIN 125 WASHER M8	8
7	HTC 243 - M10x25(5x13x50)	2
8	HTC 269 CLIPS (M10)	2
9	BS EN ISO - 4161 - M10 - N	2
10	HTC 226 - M8X30 (4X10X37)	8
11	HTC 271 CLIPS (M8)	8
12	DIN 6923 FLANGE NUT M8	12





- 1) Locate front mounting bracket along with extra Support
- 2) Remove factory bolts as shown on image #1 and #2
- 3) Install front mounting bracket as show on image #3
DO NOT TIGHTEN YET
- 4) Locate extra support mounting points and insert HTC 226 with HTC 271 as shown on image #5
- 5) Proceed to attach extra support bracket as shown on image #6 DO NOT TIGHTEN YET
- 6) Proceed to connect main bracket with extra support bracket using supplied M8 hardware DO NOT TIGHTEN YET.
- 7) Proceed to rear bracket installation.

For Technical support please call 1-866-717-6645

WARNING: USE OF POWERTOOLS WILL VOID THE WARRANTY



- 1) Locate rear mounting bracket and extra support
- 2) Insert HTC 243 with HTC 269 as show on images #1, #2 and #3
- 3) Attach rear main bracket as shown on image #4
DO NOT TIGHTEN YET
- 4) Locate extra support mounting area and remove factory rubber plugs. Insert HTC 226 with HTC 271 as show on image #5
- 5) Install extra support bracket as show on image #6
DO NOT TIGHTEN YET
- 6) Proceed to connect the rear main bracket with the extra support with supplied M8 hardware as show on image #7 DO NOT TIGHTEN YET

7) Proceed to loosen the M8 hardware on bottom of steps

8) Install step on to brackets, adjust front to rear and in / out to achieve the desired position HAND TIGHT ONLY

9) Now that the steps are positioned proceed to torque the brackets to the chassis M8 hardware to 18 ft lbs

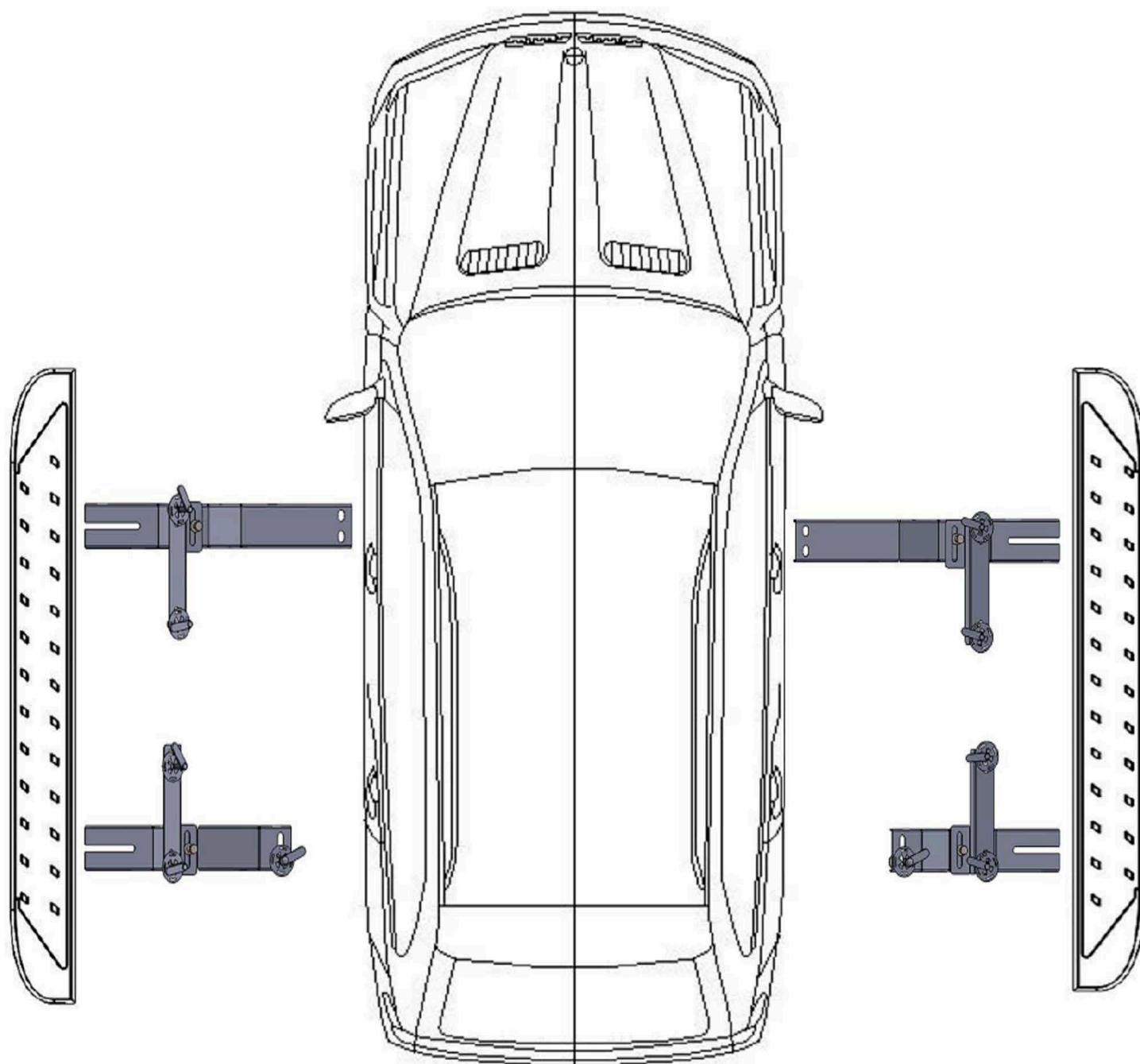
10) Proceed to torque the hardware on bottom of the steps to 18 ft lbs DO NOT USE IMPACT TOOLS AS THIS WILL DAMAGE THE BOARDS.

11) Now proceed to the other side and follow the same steps.

12) Romik recommends to wax the running boards twice per year with a high quality carnauba wax.

3226 / 3234 Nissan Rogue Sport 2017-Present

For technical support please call 1-866-717-6645



WARNING : Use of powertools will void the warranty