



Installation Instructions

Part No. **6311**

Product: Running Boards

Application: **Lexus RX 2016 – 2022**

Level of Difficulty: 1 2 **3** 4 5

Installation Time: 90 Min.

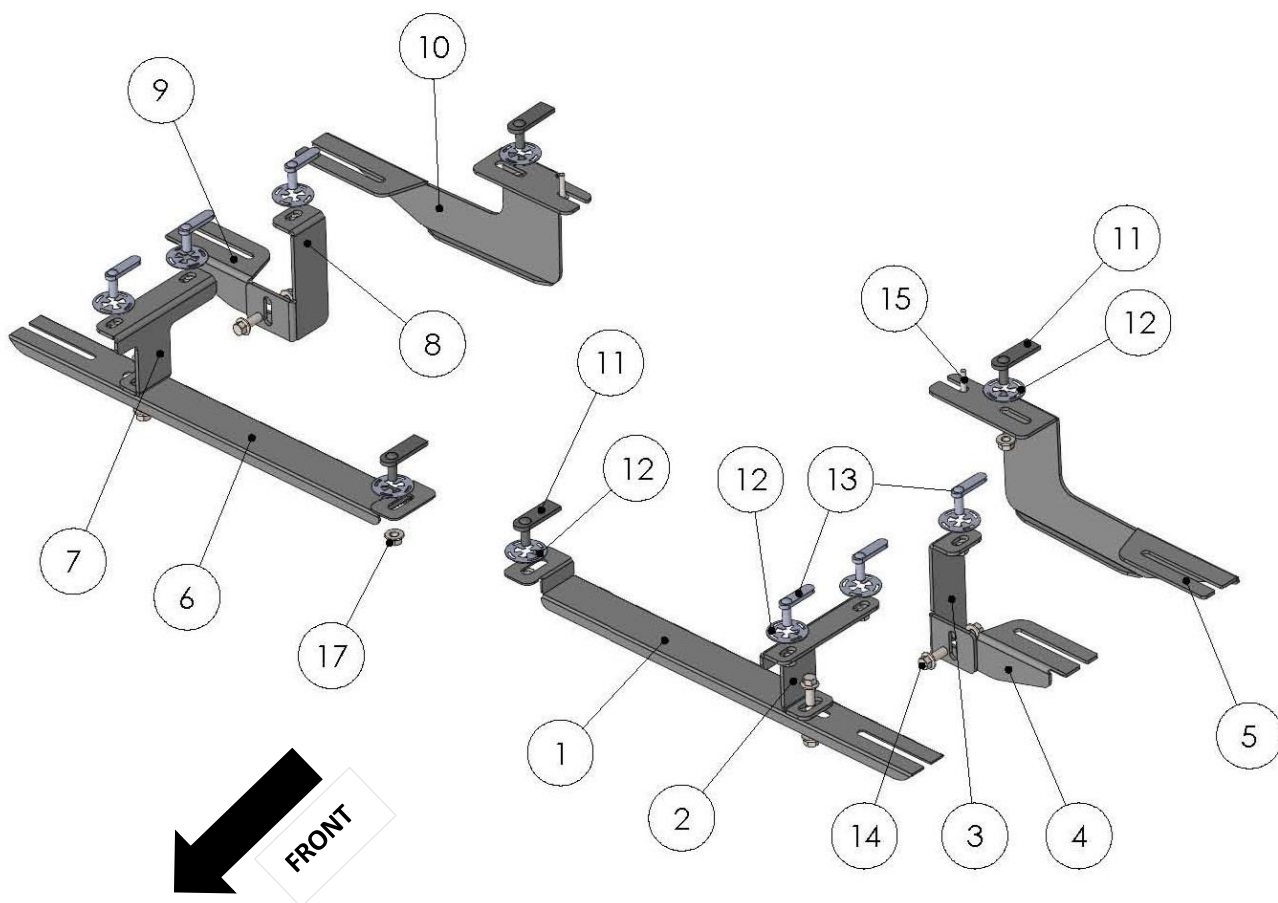
REV 4 10/15/23

Hardware	Torque Aluminum	Torque Steel to Steel
M6 Bolt	3 ft-lbs.	14 ft-lbs.
M8 Bolt	7 ft-lbs.	35 ft-lbs.
M10 Bolt	16 ft-lbs.	64 ft-lbs.
M12 Bolt	28 ft-lbs.	112 ft-lbs.

ATTENTION: Use correct torque settings to avoid damaging the running boards and or mounting brackets. Failure to do so will void your warranty. If you have any questions, please contact our technical team at 1-866-717-6645

Attention: Please make sure that you have the latest instructions
from **Romik.com**

QR Scan



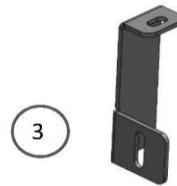
6311_v2



**DRIVER SIDE
FRONT-1 BRACKET
1 x QTY**



**DRIVER SIDE
FRONT-2 BRACKET
1 x QTY**



**DRIVER SIDE
CENTER-1 BRACKET
1 x QTY**



**DRIVER SIDE
CENTER-2 BRACKET
1 x QTY**



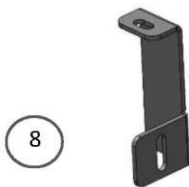
**DRIVER SIDE
REAR-1 BRACKET
1 x QTY**



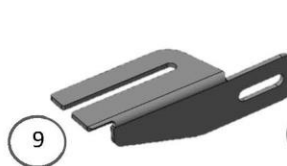
**PASSENGER SIDE
FRONT-1 BRACKET
1 x QTY**



**PASSENGER SIDE
FRONT-2 BRACKET
1 x QTY**



**PASSENGER SIDE
CENTER-1 BRACKET
1 x QTY**

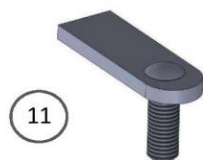


**PASSENGER SIDE
CENTER-2 BRACKET
1 x QTY**



**PASSENGER SIDE
REAR-1 BRACKET
1 x QTY**

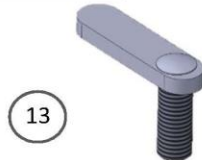
HARDWARE



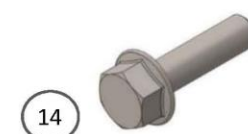
**HTC 230 – M10x25
5x20x60
4x**



**HTC269
CLIPS M10
10x**



**HTC 243 – M10x25
4x12x50
6x**



**M10x25
FLANGE BOLT
4x**



**M6x30
BOLT
2x**



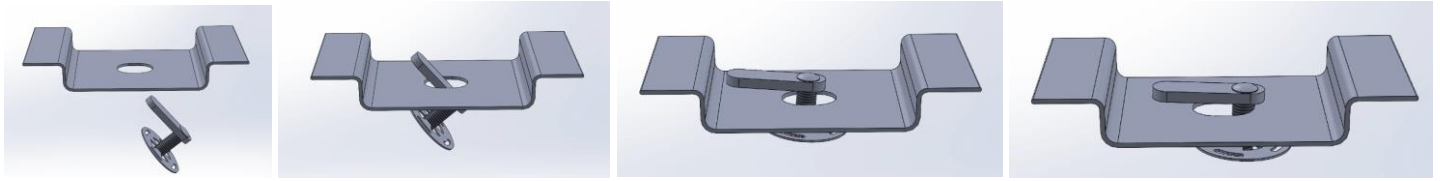
**M6
WASHER
2x**



**M10
FLANGE NUT
14x**

Installation Instructions 6311 Bracket Kit

Important Install Tip: When installing Romik HTC inserts follow the sequence below. Make sure the HTC is seated correctly and do not use power tools as this will only spin the insert and possibly damage it. Test by tugging on it before installing bracket. Blue loctite is highly recommended on all metal parts.



NOTE: This vehicle may require undercarriage trimming. Some early models do not have panels, please proceed without trimming. **VISIBLE GAP DUE TO VEHICLE BODY DESIGN ONLY WHEN DOOR IS OPEN.** See images at www.Romik.com

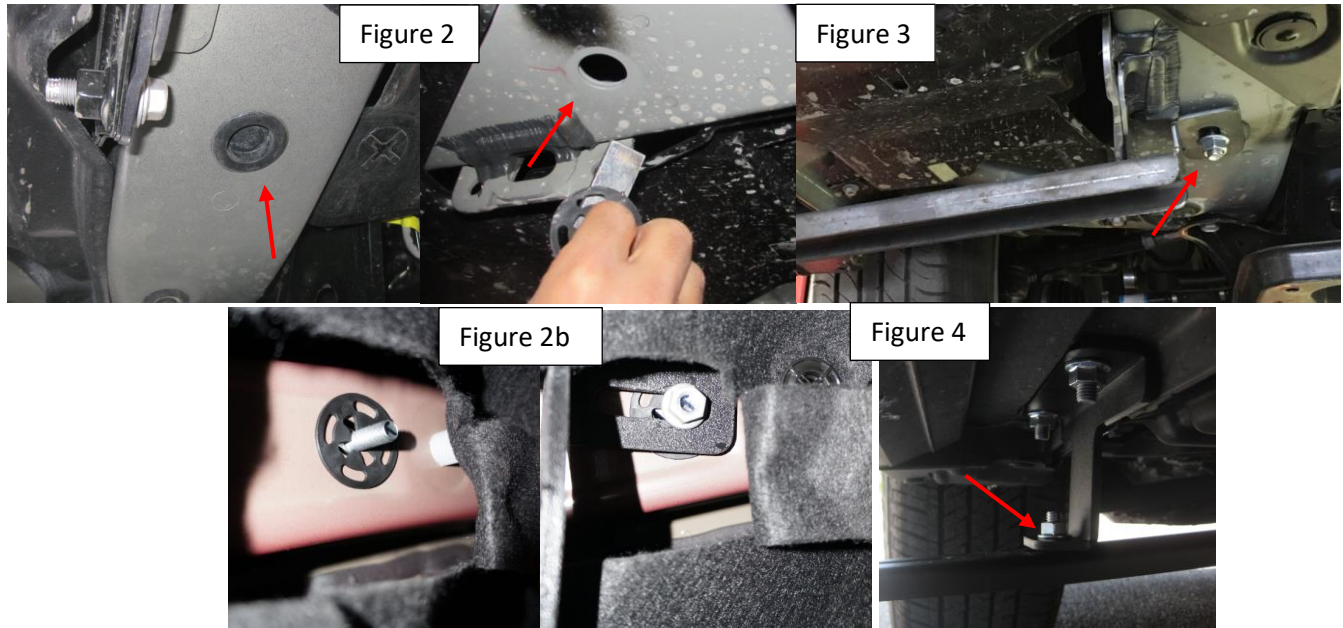


Step 1: Locate extra support mounting location Figure 1 (1st and 2nd plug from front to rear) Install #13 HTC 243 and attach front extra support #2. Using the extra support as guide cut out a 4x4 inch section and expose the install location Figure 2 this step shows driver's side.



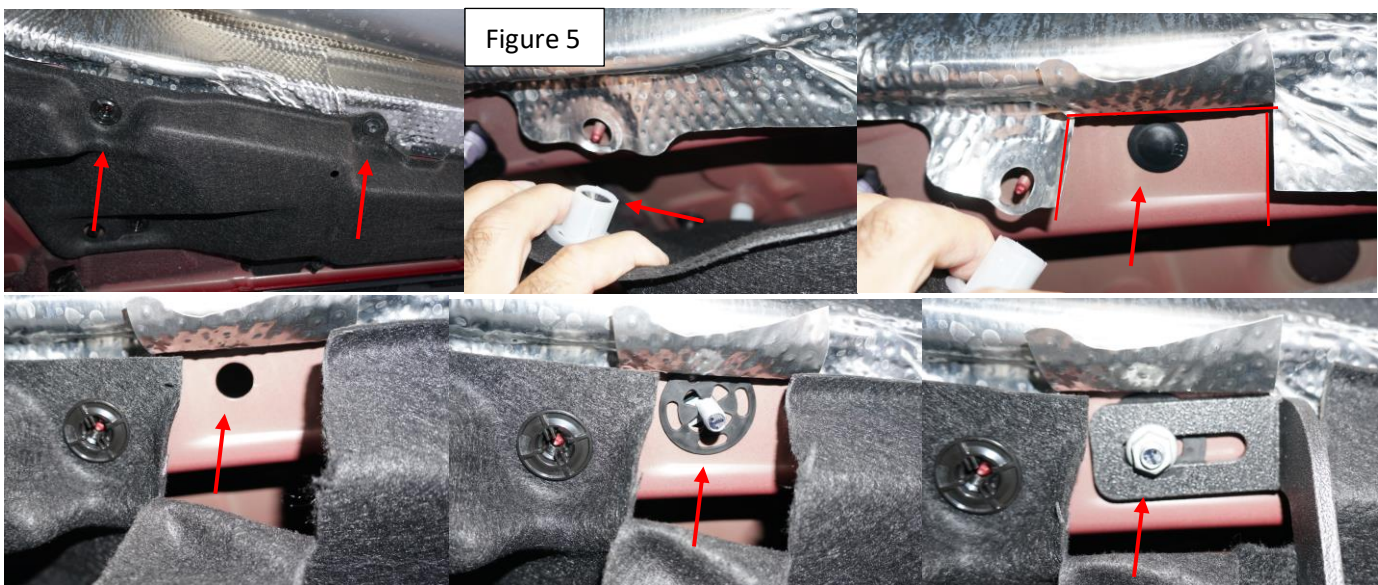
Step 2: Remove factory rubber plug and install provided #11 HTC 230 Figure 2. Figure 2b shows if you have a panel. Attach the main front bracket as shown Figure 3. Attach both brackets together using provided M10 #14, and #15 hardware Figure 4 Make sure these are loose and do not tighten.

Installation Instructions 6311 Bracket Kit

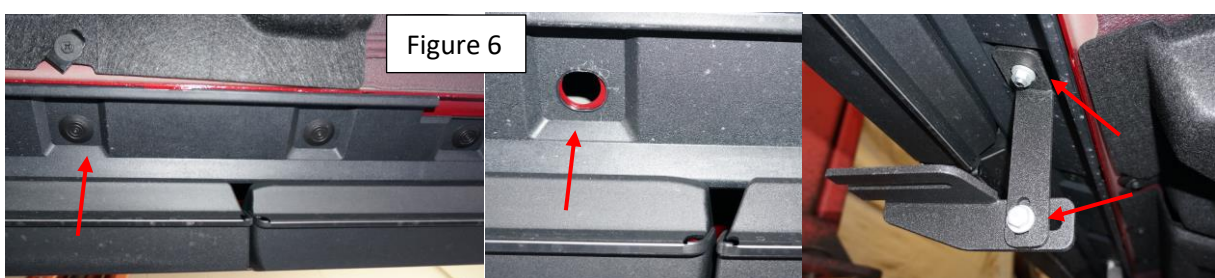


Passenger side: The process is the same as driver's side. Undo inner part of panel just enough to expose the mounting area. Pry down on the panel to expose tin shield.

Trim a 3 x 4 area to expose the mounting position Figure 5. Install #11 HTC 230 followed by passenger side main bracket. Make sure these are loose and do not tighten.



Step 4: Remove factory rubber plug (4th plug on panel) Figure 6 install provided HTC 243 and attach middle bracket 2pc #3 and #4 as shown. Make sure these are loose and do not tighten.

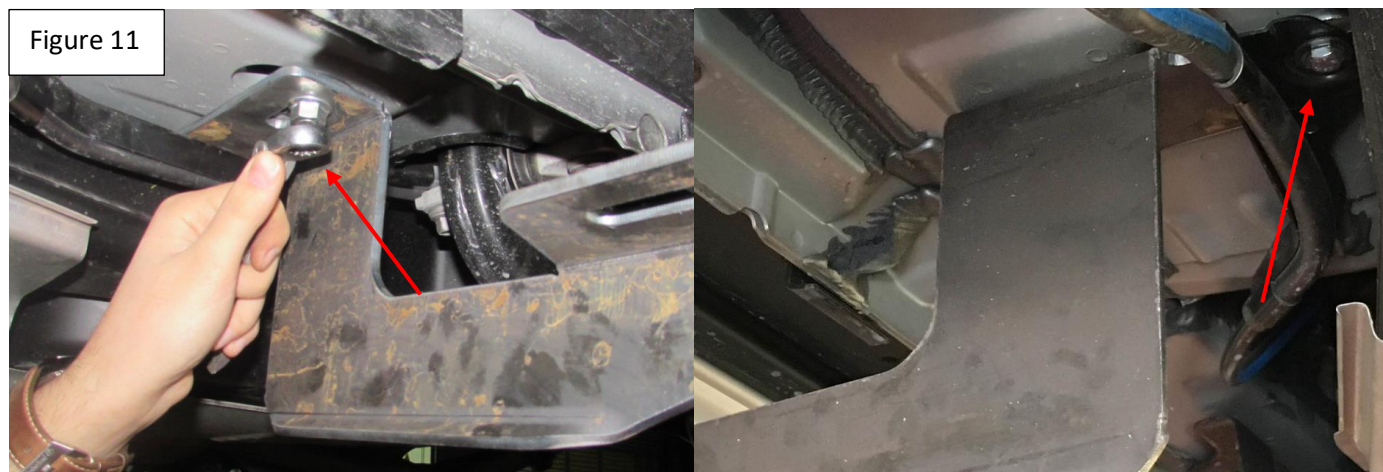


Installation Instructions 6311 Bracket Kit

Step 5: Locate rear bracket mounting area. Remove rubber plug and 10mm factory bolt as shown Figure 7, 8. Install provided #11 HTC 230 as shown Figure 9. Note some models passenger side may have a thin metal heat shield is present see Figure 10. Gently bend out of way or trim to install HTC. Install provided #11 HTC 230.



Step 6: Install rear main bracket as shown Figure 11. Install provided #15 M6x30 bolt. Do not tighten



Step 7: Repeat process on opposite side.

Step 8: Proceed to last page of this manual for running board install instructions and torque values

For Technical support please call our team at 1-866-717-6645 and one of our experts will assist you with this installation.

Thank you for choosing Romik.

Installation Instructions Running Boards

NOTE: Use of power tools will damage the bottom of the running board and void your warranty.

Step 1: loosen the M8 hardware on back of the running boards.

Step 2: Slide running board onto brackets

Step 3: Tighten hardware to 7 ft lbs.



ROF/RPD/ROB Running boards

Step 1: Place clamping plate on top of running board as shown below. Make sure clamping plate sits correctly on running board surface.

Step 2: Install carriage bolts and plastic retaining clips as shown below.

Step 3: Install and tighten hardware to 7 ft lbs.



Product Registration and Warranty Information

- Register your Romik products at <https://romik.com/productregistration>
- Warranty information at <http://www.romik.com/warranty>

Cleaning and maintaining your Romik Running boards

Cleaning and maintaining your running boards is important, apply a light coat of a quality carnauba wax at least 2X per year. Wash often with mild soap and make sure to remove all soap residue. Many car automatic carwashes use a strong soap, make sure to use enough water to remove all residue.

For video instructions on how to clean your Romik products please click here <https://romik.com/cleaning>