



Installation Instructions

Part No. **Universal**

Product: Rear Hitch

Application: **2 Inch receiver only**

Level of Difficulty: 1 2 3 4 5

Installation Time: 15 Min.

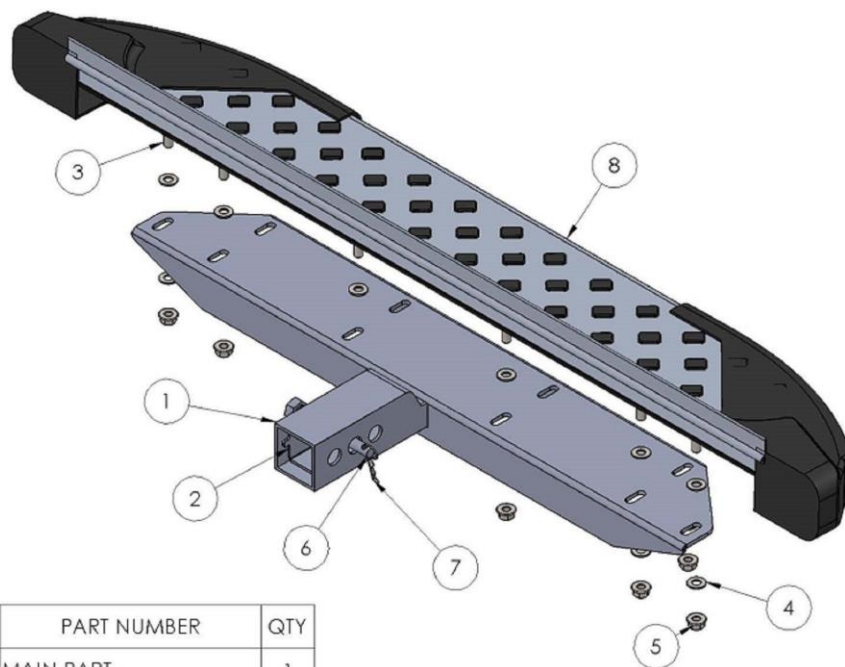
REV 2 02/01/23

Hardware	Torque Aluminum	Torque Steel to Steel
M6 Bolt	3 ft-lbs.	14 ft-lbs.
M8 Bolt	7 ft-lbs.	35 ft-lbs.
M10 Bolt	16 ft-lbs.	64 ft-lbs.
M12 Bolt	28 ft-lbs.	112 ft-lbs.

ATTENTION: Use correct torque settings to avoid damaging the running boards and or mounting brackets. Failure to do so will void your warranty. If you have any questions, please contact our technical team at 1-866-717-6645

Attention: Please make sure that you have the latest instructions from **Romik.com**

QR Scan

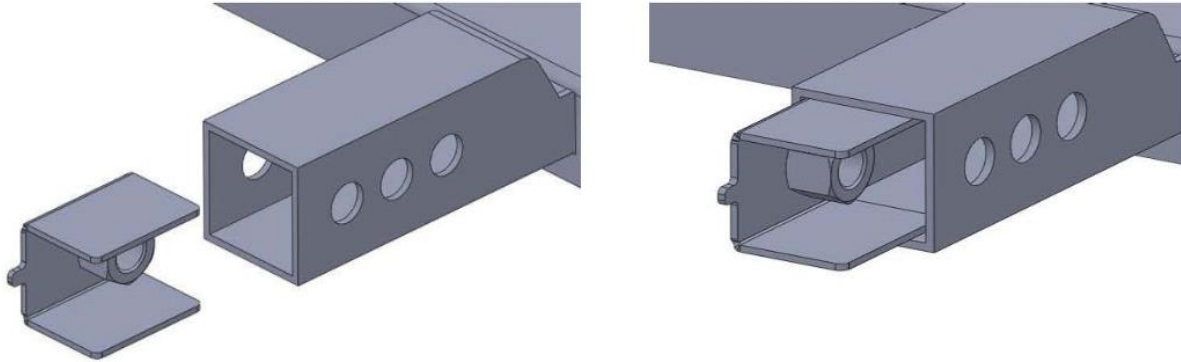


ITEM	PART NUMBER	QTY
1	MAIN PART	1
2	Anti-Rattle plate	1
3	DIN 933 BOLT M8 x 25	10
4	DIN 125 WASHER M8	20
5	DIN 6923 FLANGE NUT M8	10
6	SPECIAL BOLT	1
7	SPECIAL WIRES	1
8	Running Board	1

Installation Instructions Universal Rear Hitch

Important Install Tip: Universal rear hitch only fits 2 inch receivers. Rear hitch may interfere with parking rear sensors.

Step 1: Unpack and inspect rear hitch and install anti-rattler plate as shown below.



Step 2: Slide hitch step into 2-inch receiver. Make sure to choose one of three positions.



Step 3: Install special bolt, using a 22mm socket or wrench tighten bolt until hitch does not move. Install safety pin, you have completed the installation.



For Technical support please call our team at 1-866-717-6645 and one of our experts will assist you with this installation.

Thank you for choosing Romik.