



Installation Instructions

Part No. **2212**

Product: Running Boards

Application: **Honda CRV 2007 - 2016**

Level of Difficulty: 1 2 3 4 5

Installation Time: 90 Min.

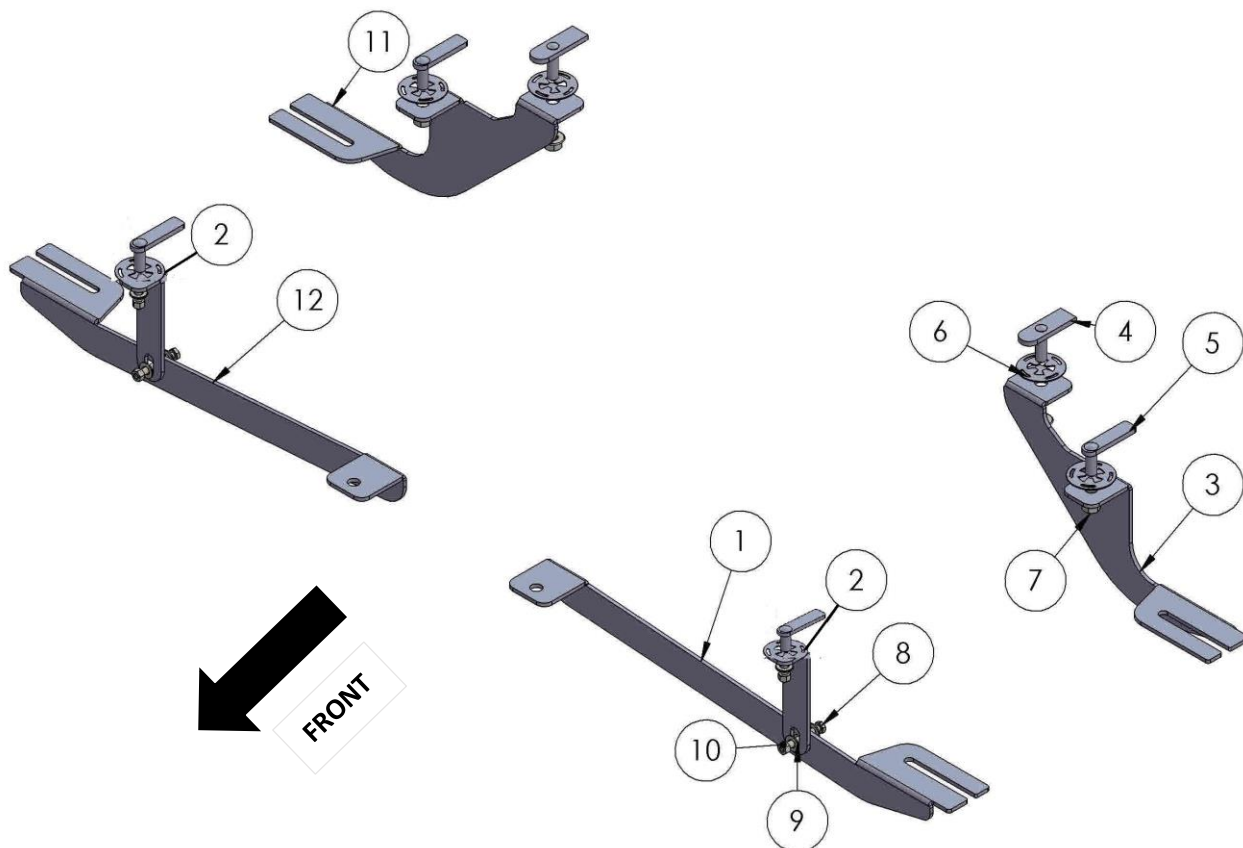
REV 3 02/01/23

Hardware	Torque Aluminum	Torque Steel to Steel
M6 Bolt	3 ft-lbs.	14 ft-lbs.
M8 Bolt	7 ft-lbs.	35 ft-lbs.
M10 Bolt	16 ft-lbs.	64 ft-lbs.
M12 Bolt	28 ft-lbs.	112 ft-lbs.

ATTENTION: Use correct torque settings to avoid damaging the running boards and or mounting brackets. Failure to do so will void your warranty. If you have any questions, please contact our technical team at 1-866-717-6645

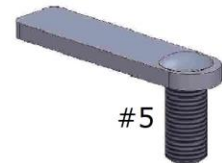
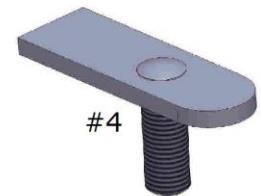
Attention: Please make sure that you have the latest instructions
from **Romik.com**

QR Scan



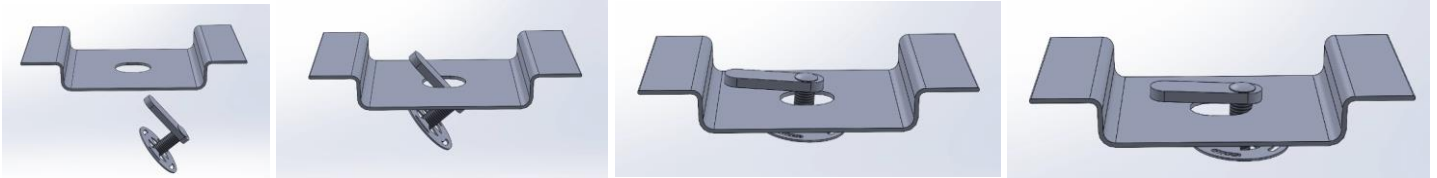
2012 Honda CRV 2007 – 2016

ITEM /NO	PART NAME	QTY
1	2212850F0 DRIVER	1
2	2212850F1	2
3	2212850B0 DRIVER	1
4	HTC 238 - M10x25(4x20x60)	2
5	HTC 262 - M10X30 (5X15X60)	4
6	HTC 269 - CLIPS (M10)	6
7	DIN 6923 - FLANGE NUT M10	6
8	DIN 933 - M8 built in washer	2
9	Updated shoulder bolt	1
10	DIN 934 NUT- M8 built in washer	2
11	2212850B0 PASSENGER	1
12	2212850F0 PASSENGER	1



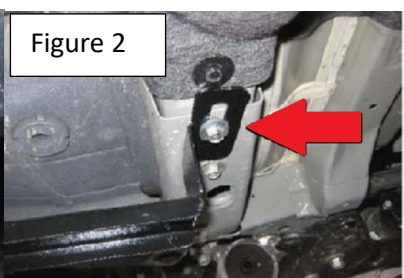
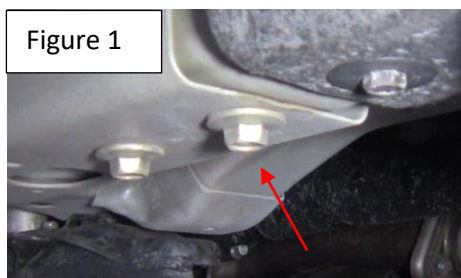
Installation Instructions 2012 Bracket Kit

Important Install Tip: When installing Romik HTC inserts follow the sequence below. Make sure the HTC is seated correctly and do not use power tools as this will only spin the insert and possibly damage it. Test by tugging on it before installing bracket. Blue loctite is highly recommended on all metal parts.

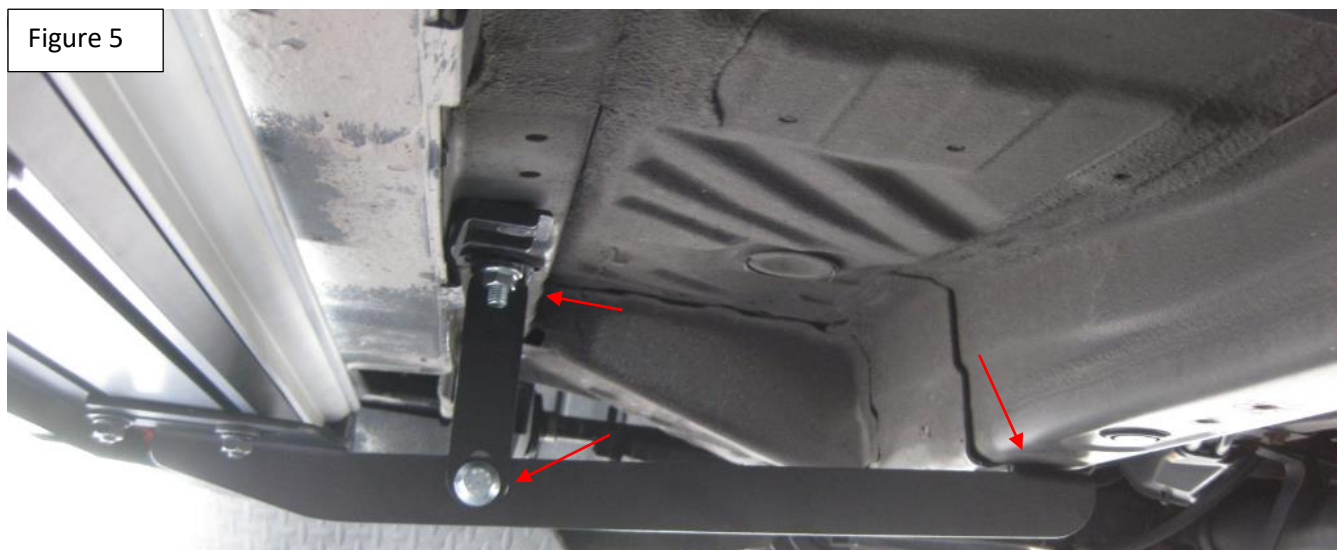
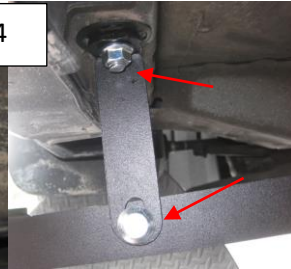
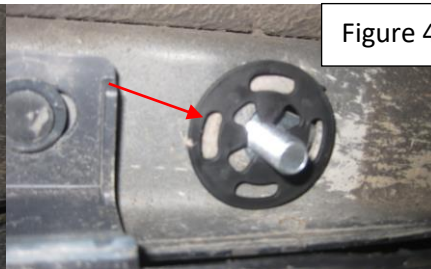
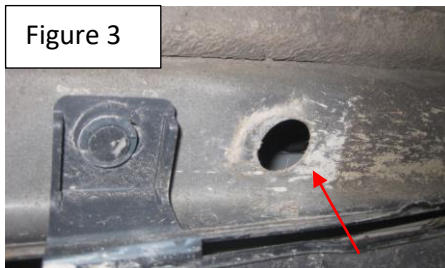


Step 1: Locate front mounting locations and hardware as per 1st page of this installation manual.

Step 2: Remove factory front bolt as shown on Figure 1. Do not discard as it is used to install main bracket. Install main bracket as shown Figure 2. Do not tighten.

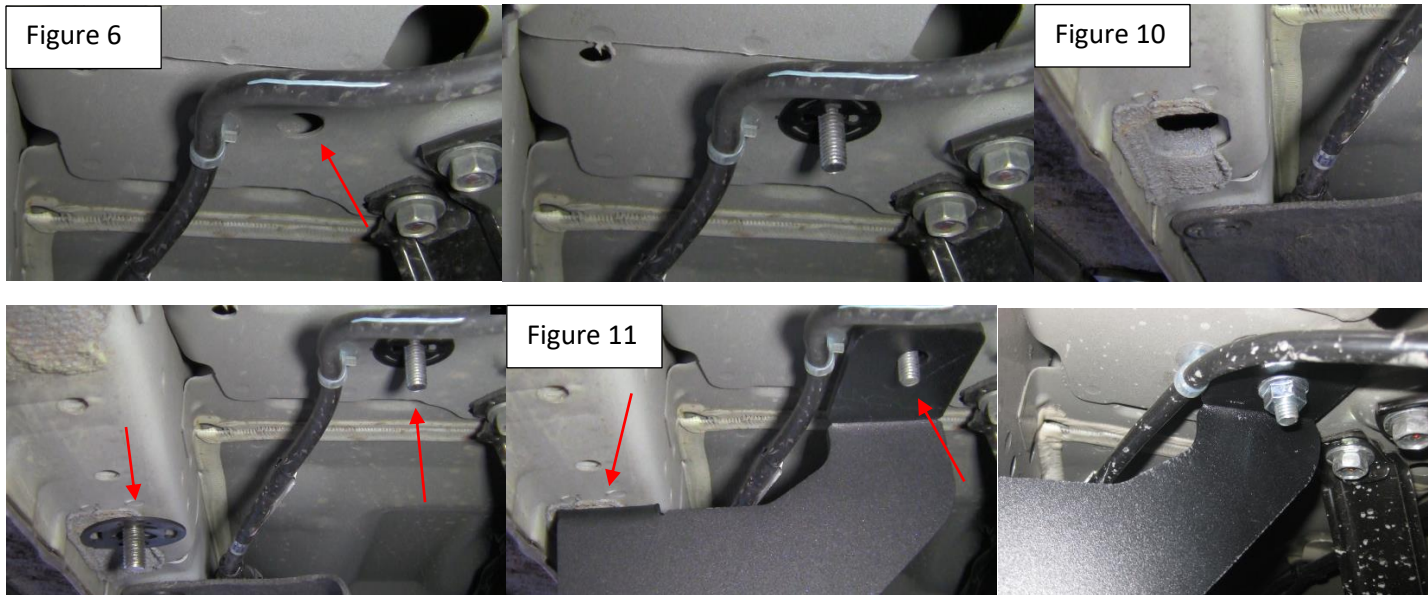


Step 3: Remove factory rubber plugs in line with main bracket shown on Figure 3. Install provided HTC 262. Install extra support and attach to main bracket as shown in Figure 4 and Figure 5. Do not tighten.



Installation Instructions 2012 Bracket Kit

Step 4: Locate rear mounting area and install provided HTC 238 on inner most Figure 6 and HTC 262 on outer most position Figure 10. Install rear bracket as show Figure 11 Do not tighten.



Step 5: Proceed to last page of this manual for running board install instructions and torque values

For Technical support please call our team at 1-866-717-6645 and one of our experts will assist you with this installation.

Thank you for choosing Romik

Installation Instructions Running Boards

NOTE: Use of power tools will damage the bottom of the running board and void your warranty.

Step 1: loosen the M8 hardware on back of the running boards.

Step 2: Slide running board onto brackets

Step 3: Tighten hardware to 7 ft lbs.

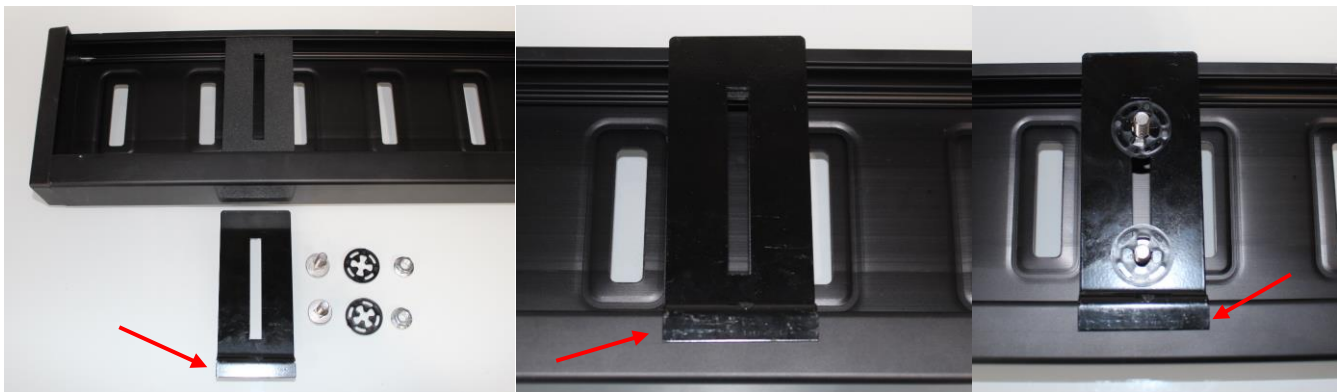


ROF/RPD/ROB Running boards

Step 1: Place clamping plate on top of running board as shown below. Make sure clamping plate sits correctly on running board surface.

Step 2: Install carriage bolts and plastic retaining clips as shown below.

Step 3: Install and tighten hardware to 7 ft lbs.



Product Registration and Warranty Information

- Register your Romik products at <https://romik.com/productregistration>
- Warranty information at <http://www.romik.com/warranty>

Cleaning and maintaining your Romik Running boards

Cleaning and maintaining your running boards is important, apply a light coat of a quality carnauba wax at least 2X per year. Wash often with mild soap and make sure to remove all soap residue. Many car automatic carwashes use a strong soap, make sure to use enough water to remove all residue.

For video instructions on how to clean your Romik products please click here <https://romik.com/cleaning>