



## Installation Instructions

Part No. **2332 – V2**

Product: Running Boards

Application: **Hyundai Palisades 2020 – Present**  
**Kia Telluride 2020 - Present**

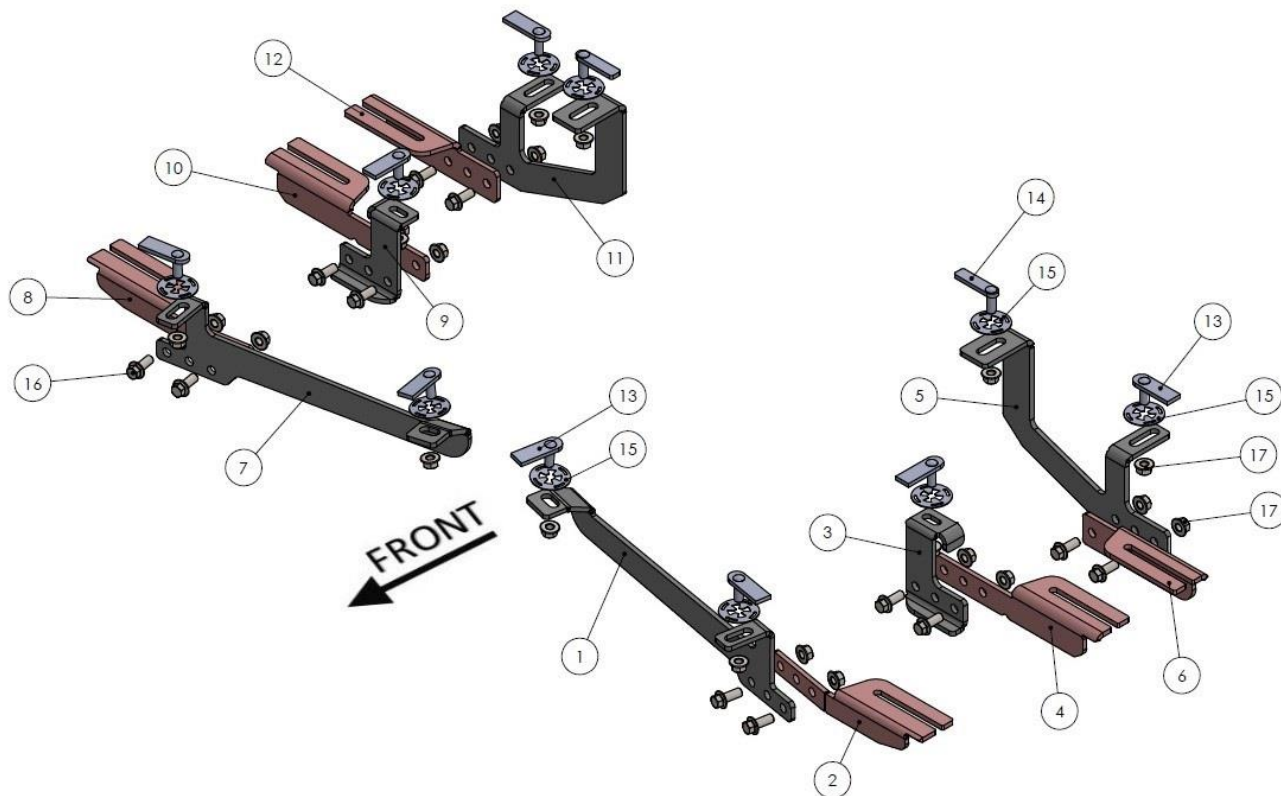
Level of Difficulty: 1 2 **3** 4 5

Installation Time: 90 Min

REV 3 09/01/22

Hardware	Torque Aluminum	Torque Steel to Steel
M6 Bolt	3 ft-lbs.	14 ft-lbs.
M8 Bolt	7 ft-lbs.	35 ft-lbs.
M10 Bolt	16 ft-lbs.	64 ft-lbs.
M12 Bolt	28 ft-lbs.	112 ft-lbs.

**ATTENTION:** Use correct torque settings to avoid damaging the running boards and or mounting brackets. Failure to do so will void your warranty. If you have any questions, please contact our technical team at 1-866-717-6645



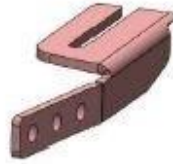
## 2332 - V2

1



DRIVER SIDE  
FRONT BRACKET-1  
1 x QTY

2



DRIVER SIDE  
FRONT BRACKET-2  
1 x QTY

3



DRIVER SIDE  
CENTER BRACKET-1  
1 x QTY

4



DRIVER SIDE  
CENTER BRACKET-2  
1 x QTY

5



DRIVER SIDE  
REAR BRACKET-1  
1 x QTY

6



DRIVER SIDE  
REAR BRACKET-2  
1 x QTY

7



PASSENGER SIDE  
FRONT BRACKET-1  
1 x QTY

8



PASSENGER SIDE  
FRONT BRACKET-2  
1 x QTY

9



PASSENGER SIDE  
CENTER BRACKET-1  
1 x QTY

10



PASSENGER SIDE  
CENTER BRACKET-2  
1 x QTY

11



PASSENGER SIDE  
REAR BRACKET-1  
1 x QTY

12



PASSENGER SIDE  
REAR BRACKET-2  
1 x QTY

### HARDWARE

13



HTC 230 M10x25  
(5x20x60)  
8x

14



HTC 262 M10x30  
(5x15x60)  
2x

15



HTC 269  
M10 CLIPS  
10x

16



M10x25 HEX  
FLANGE BOLT  
12x

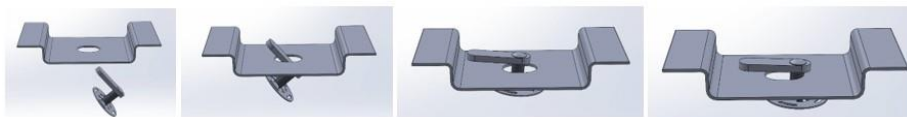
17



M10 HEX  
FLANGE NUT  
22x

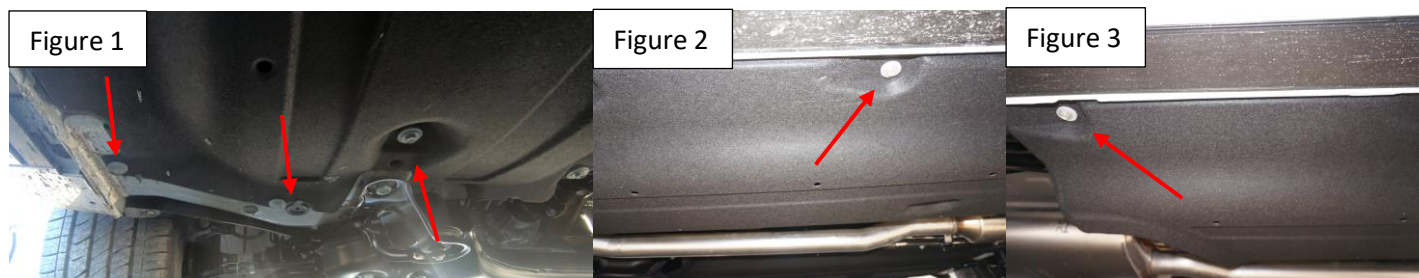
# Installation Instructions 2332 Bracket Kit

**Important Install Tip:** When installing Romik HTC inserts follow the sequence below. Make sure the HTC is seated correctly and do not use power tools as this will only spin the insert and possibly damage it. Test by tugging on it before installing bracket. Blue loctite is highly recommended on all metal parts.



**NOTE:** This vehicle requires undercarriage panel trimming

**Step 1:** Remove bottom plastic panel hardware. Note: Let the panel hang, it is easier to trim with it only attached from the inner most bolts. Panels below show Driver's front to rear. Figures 1-3



**Step 2:** Locate front inner mounting location. Remove factory rubber plug and install provided HTC #13 Figure 4. Raise the panel and notice where it makes contact with the HTC. Figure 5, make a 4 x 4 cut exposing the HTC



**Step 3:** Locate front outer mounting location. Remove factory rubber plug and install provided HTC #13 Figure 6. Raise the panel and notice where it makes contact with the HTC. Figure 7, make a 2 x 4 cut exposing the HTC



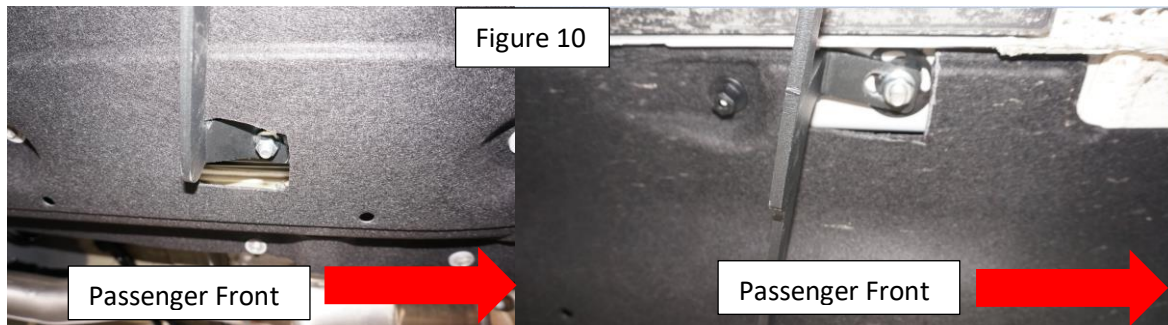
**Step 4:** Locate middle mounting location. Remove factory rubber plug and install provided HTC #13 Figure 8. Raise the panel and notice where it makes contact with the HTC. Figure 9, make a 2 x 2 cut exposing the HTC



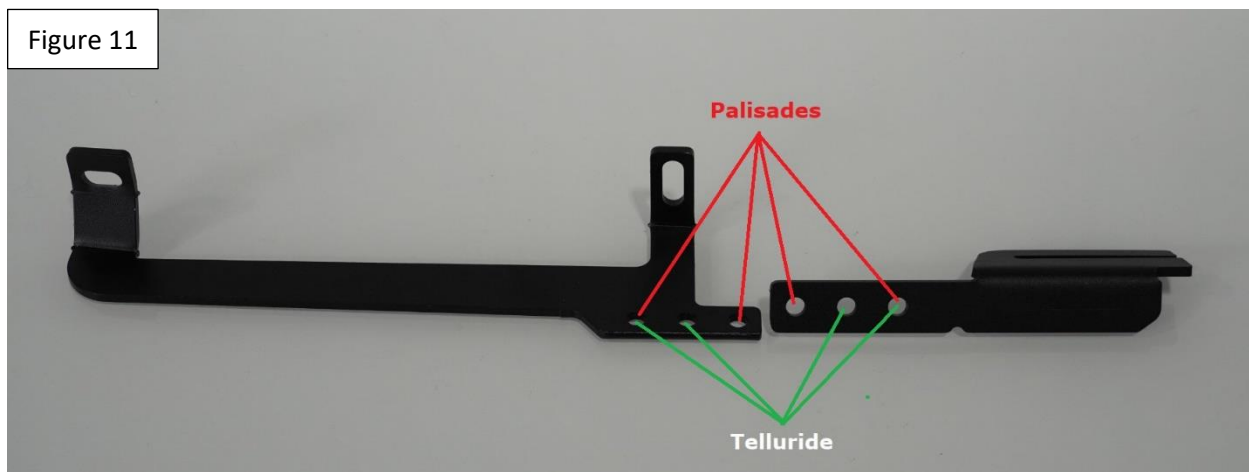


# Installation Instructions 2332 Bracket Kit

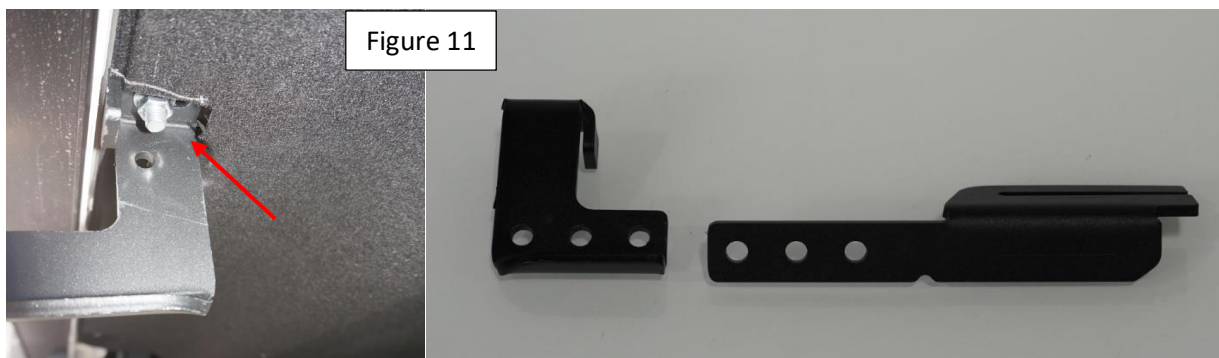
**Step 5:** Re-install panels using factory hardware. Install front bracket (passenger front shown) torque to specs. Figure 10



**Step 6:** Assemble bracket according to vehicle. Palisades use outer holes (1 and 3) Telluride use holes 1 and 2 on main bracket and holes 2 and 3 on outer part. Figure 11 Do not tighten



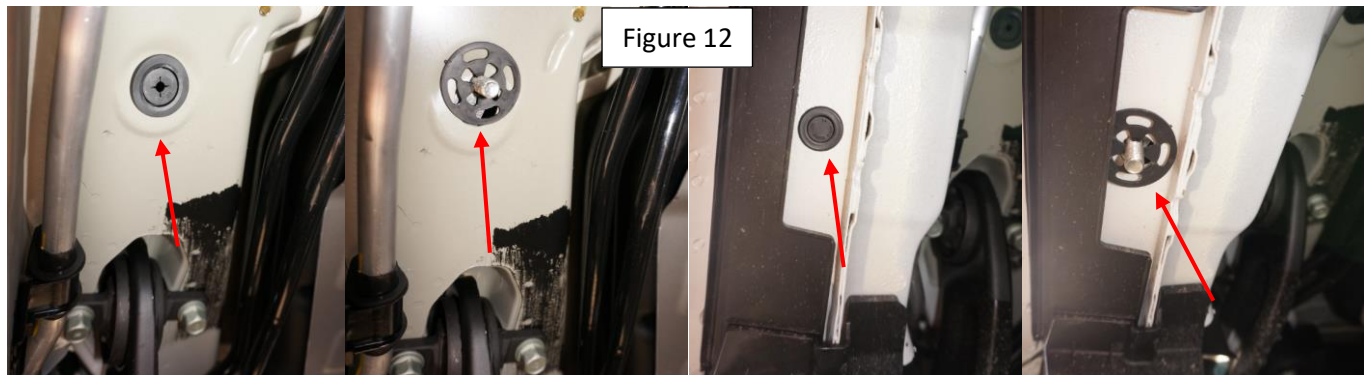
**Step 7:** Install middle bracket and torque to specs Figure 12. Assemble bracket according to vehicle. Do not tighten.



# Installation Instructions 2332 Bracket Kit

---

**Step 7:** Locate rear bracket mounting location. Figure 12 install HTC #14 and HTC #13 as per first page.



**Step 8:** Install rear bracket and torque to specs. Figure 13. Assemble bracket according to vehicle. Do not tighten



**Step 9:** Using a level install running boards hand tight onto brackets. Once running boards are leveled tighten bracket to bracket connection and torque to 64 Ft. Lbs.

**Step 10:** Proceed to last page of this manual for running board install instructions and torque values

For Technical support please call our team at 1-866-717-6645 and one of our experts will assist you with this installation.

**Thank you for choosing Romik.**

# Installation Instructions Running Boards

**NOTE: Use of power tools will damage the bottom of the running board and void your warranty.**

**Step 1: loosen the M8 hardware on back of the running boards.**

**Step 2: Slide running board onto brackets**

**Step 3: Tighten hardware to 7 ft lbs.**



## ROF/RPD/ROB Running boards

**Step 1: Place clamping plate on top of running board as shown below.**

**Step 2: Install carriage bolts and plastic retaining clips as shown below.**

**Step 3: Install and tighten hardware to 7 ft lbs.**



## Product Registration and Warranty Information

- Register your Romik products at <https://romik.com/productregistration>
- Warranty information at <http://www.romik.com/warranty>

## Cleaning and maintaining your Romik Running boards

Cleaning and maintaining your running boards is important, apply a light coat of a quality carnauba wax at least 2X per year. Wash often with mild soap and make sure to remove all soap residue. Many car automatic carwashes use a strong soap, make sure to use enough water to remove all residue.

For video instructions on how to clean your Romik products please click here <https://romik.com/cleaning>