



Installation Instructions

Part No. **2162**
 Product: Running Boards
 Application: **Ford Explorer / Linc Avi 2020-Present**
 Level of Difficulty: 1 2 3 4 5
Professional Installation Time: 90 Min.
 DIY Installation Time: 180 Min

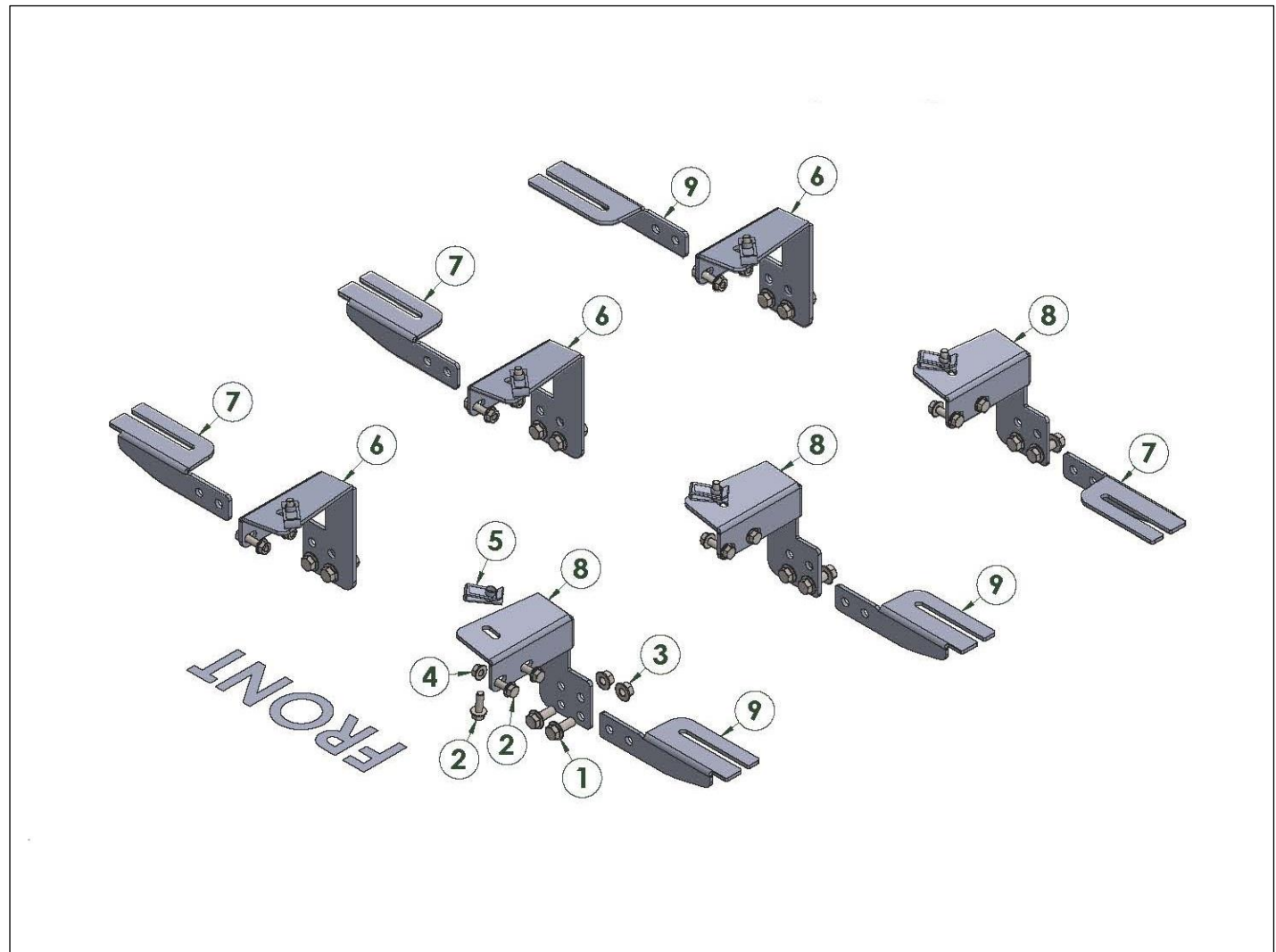
REV 6 01/01/26

Hardware	Torque Aluminum	Torque Steel to Steel
M6 Bolt	3 ft-lbs.	14 ft-lbs.
M8 Bolt	7 ft-lbs.	35 ft-lbs.
M10 Bolt	16 ft-lbs.	64 ft-lbs.
M12 Bolt	28 ft-lbs.	112 ft-lbs.

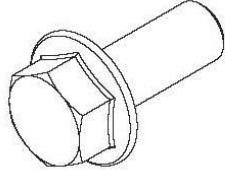
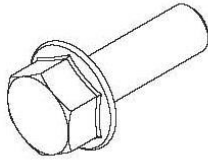
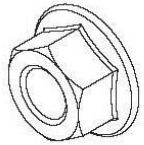
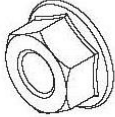
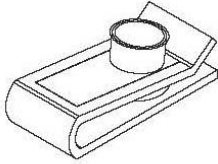
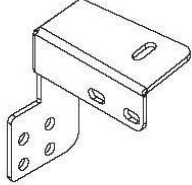
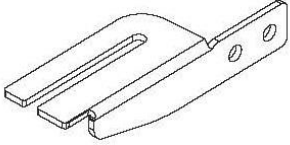
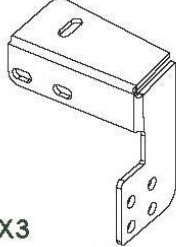
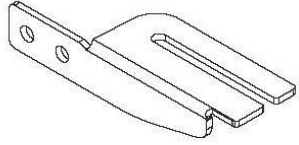
ATTENTION: Use correct torque settings to avoid damaging the running boards and or mounting brackets. Failure to do so will void your warranty. If you have any questions, please contact our technical team at 1-866-717-6645

Attention: Please make sure that you have the latest instructions from **Romik.com**

QR Scan

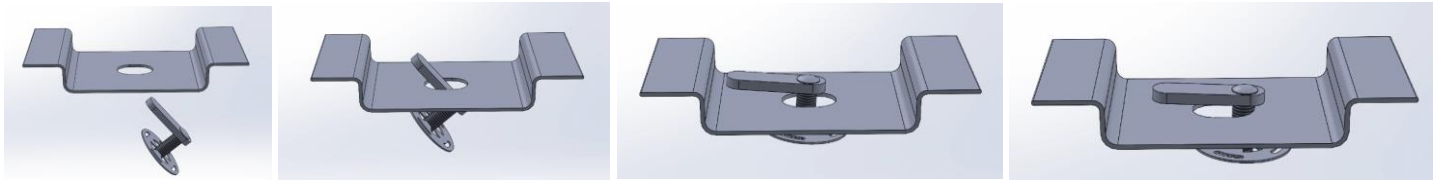


2162

<p>ITEM NO:1</p>  <p>DIN 6921 - M10 x 25 X12</p>	<p>ITEM NO:2</p>  <p>DIN 6921 - M8 x 25 X18</p>	<p>ITEM NO:3</p>  <p>Hexa Flange Nut DIN 6923 - M10 X12</p>
<p>ITEM NO:4</p>  <p>Hexa Flange Nut DIN 6923 - M8 X12</p>	<p>ITEM NO:5</p>  <p>HTC 308 - M8 U-NUT X6</p>	<p>ITEM NO:6</p>  <p>Bracket Right X3</p>
<p>ITEM NO:7</p>  <p>Leg A X3</p>	<p>ITEM NO:8</p>  <p>Bracket Left X3</p>	<p>ITEM NO:9</p>  <p>Leg B X3</p>

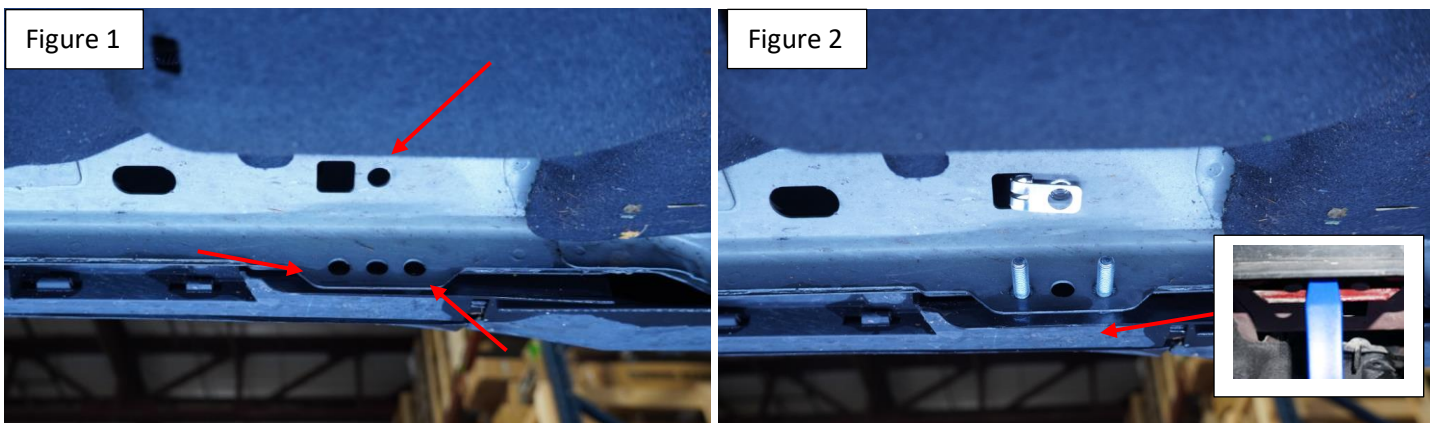
Installation Instructions 2162 Bracket Kit

Important Install Tip: When installing Romik HTC inserts follow the sequence below. Make sure the HTC is seated correctly and do not use power tools as this will only spin the insert and possibly damage it. Test by tugging on it before installing bracket. Blue loctite is highly recommended on all metal parts.

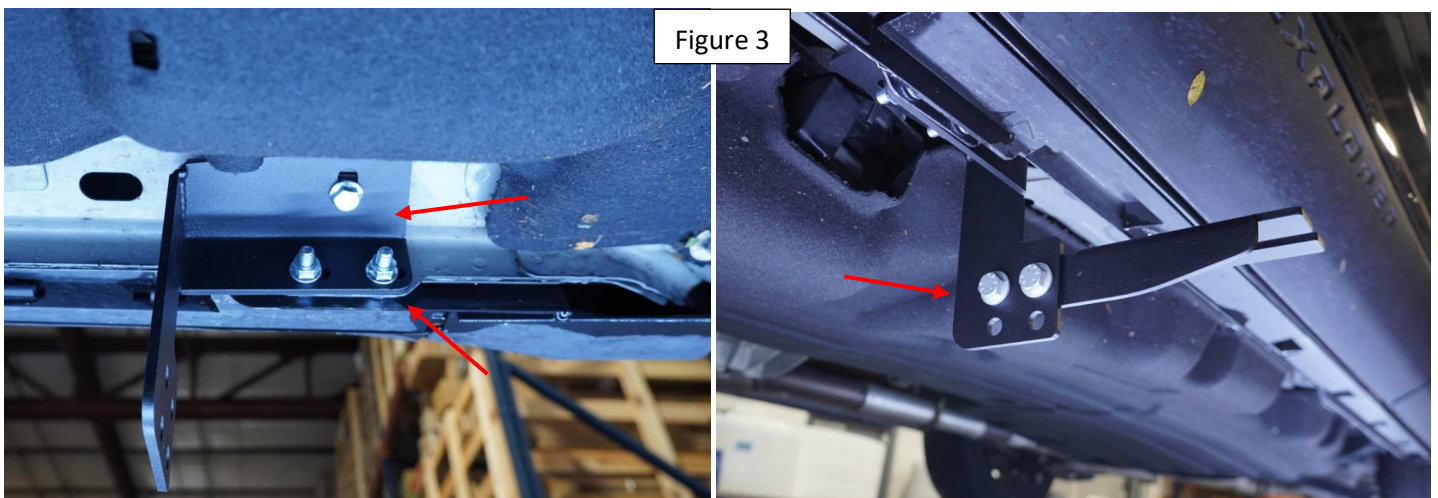


Step 1: **PROFESSIONAL INSTALLATION RECOMMENDED.** Note due to differences in years and models we suggest removing panels and trimming them after bracket installation. **This may not be the case with all models.**

Step 2: Locate front bracket mounting positions. Install provided hardware #5 HTC 308 and #2 DIN 3921 M8 x 25 Figure 1. **TIP: use a plastic tool to pry back the factory cladding to allow easy installation of #2 bolts** Figure 2.

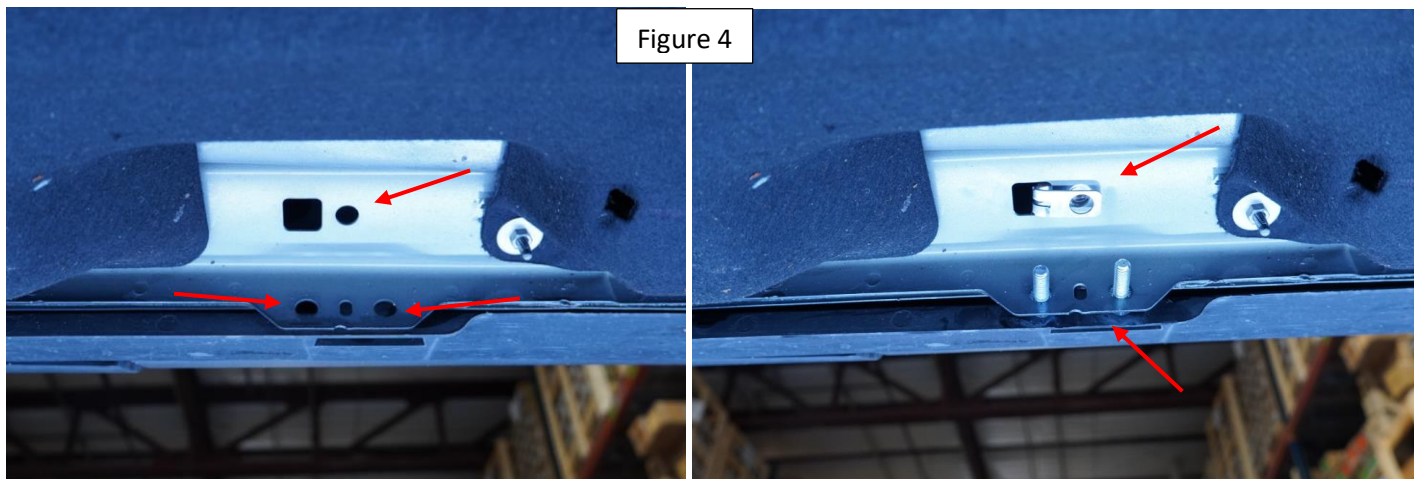


Step 3: Install bracket #8 using hardware #2, #4. Using the supplied M10 hardware #1 and #3 install the lower leg #9 Figure 3 do not tighten. **TIP: Use upper holes for Ford Explorer and lower holes for Lincoln Aviator.**

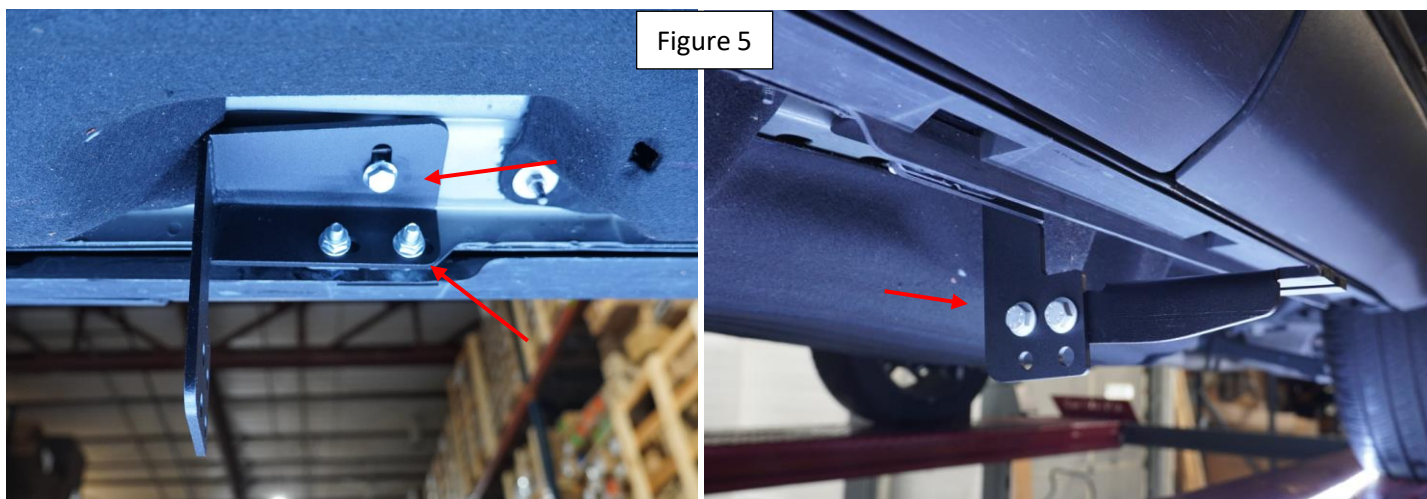


Installation Instructions 2162 Bracket Kit

Step 4: Locate middle bracket mounting positions. Install provided hardware #5 HTC 308 and #2 DIN 3921 M8 x 25 Figure 4. **TIP:** use a plastic tool to pry back the factory cladding to allow easy installation of #2 bolts.

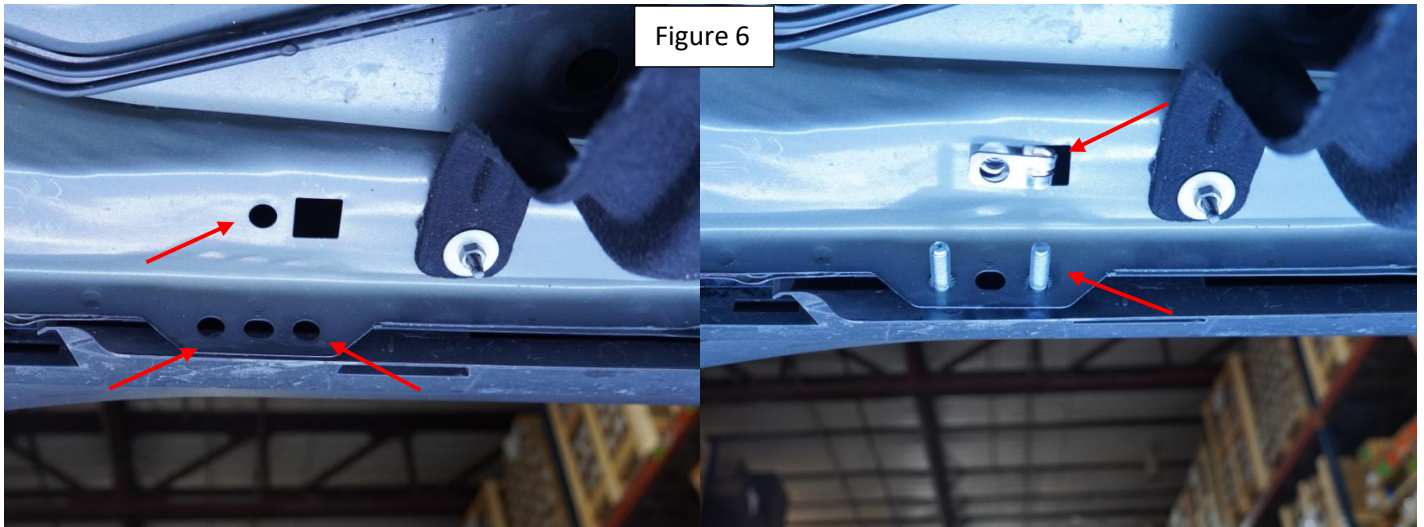


Step 5: Install bracket #8 using hardware #2, #4. Using the supplied M10 hardware #1 and #3 install the lower leg #9 Figure 5 do not tighten. **TIP:** Use upper holes for Ford Explorer and lower holes for Lincoln Aviator.

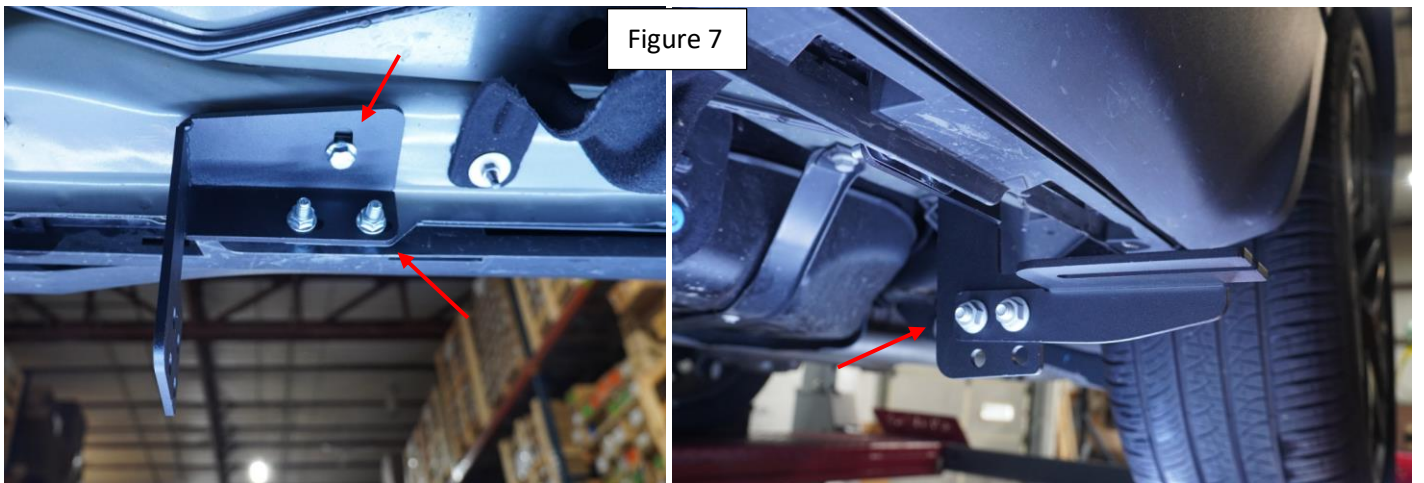


Installation Instructions 2162 Bracket Kit

Step 6: Locate rear bracket mounting positions. Install provided hardware #5 HTC 308 and #2 DIN 3921 M8 x 25 Figure 6. **TIP:** use a plastic tool to pry back the factory cladding to allow easy installation of #2 bolts.



Step 7: Install bracket #8 using hardware #2, #4. Using the supplied M10 hardware #1 and #3 install the lower leg #7 Figure 7 do not tighten. **TIP:** Use upper holes for Ford Explorer and lower holes for Lincoln Aviator.



NOTE: when installing the running boards make sure the brackets are installed in the correct sequence.

Driver Front

Driver Middle

Driver Rear



Installation Instructions 2162 Bracket Kit

Step 8: Proceed to last page of this manual for running board install instructions and torque values.



For Technical support please call our team at 1-866-717-6645 and one of our experts will assist you with this installation.

Thank you for choosing Romik.

Installation Instructions Running Boards

NOTE: Use of power tools will damage the bottom of the running board and void your warranty.

Step 1: loosen the M8 hardware on back of the running boards.

Step 2: Slide running board onto brackets

Step 3: Tighten hardware to 7 ft lbs.

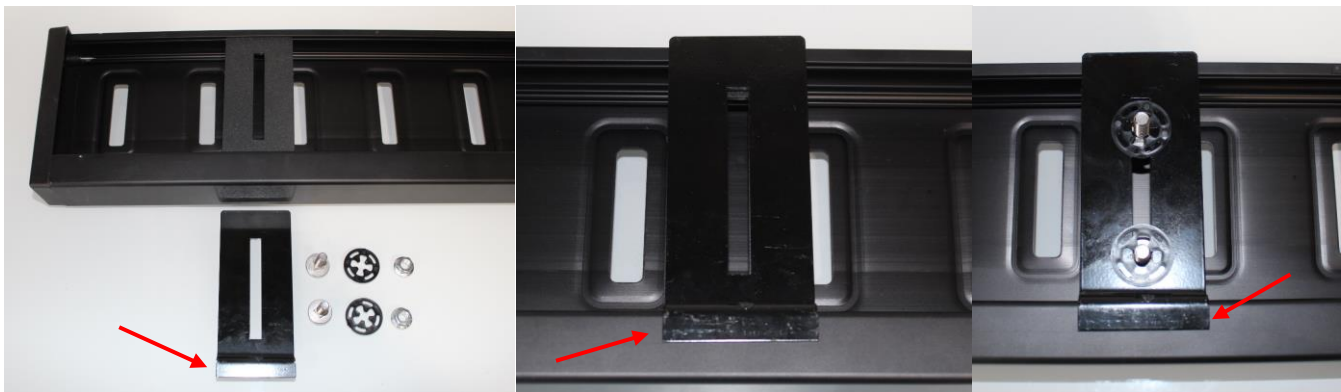


ROF/RPD/ROB Running boards

Step 1: Place clamping plate on top of running board as shown below. Make sure clamping plate sits correctly on running board surface.

Step 2: Install carriage bolts and plastic retaining clips as shown below.

Step 3: Install and tighten hardware to 7 ft lbs.



Product Registration and Warranty Information

- Register your Romik products at <https://romik.com/productregistration>
- Warranty information at <http://www.romik.com/warranty>



Cleaning and maintaining your Romik Running boards

Cleaning and maintaining your running boards is important, apply a light coat of a quality carnauba wax at least 2X per year. Wash often with mild soap and make sure to remove all soap residue. Many car automatic carwashes use a strong soap, make sure to use enough water to remove all residue.

For video instructions on how to clean your Romik products please click here <https://romik.com/cleaning>