



## Installation Instructions

Part No. **4050**

Product: Running Boards

Application: **VW Atlas 2018+**

Level of Difficulty: 1 2 3 **4** 5

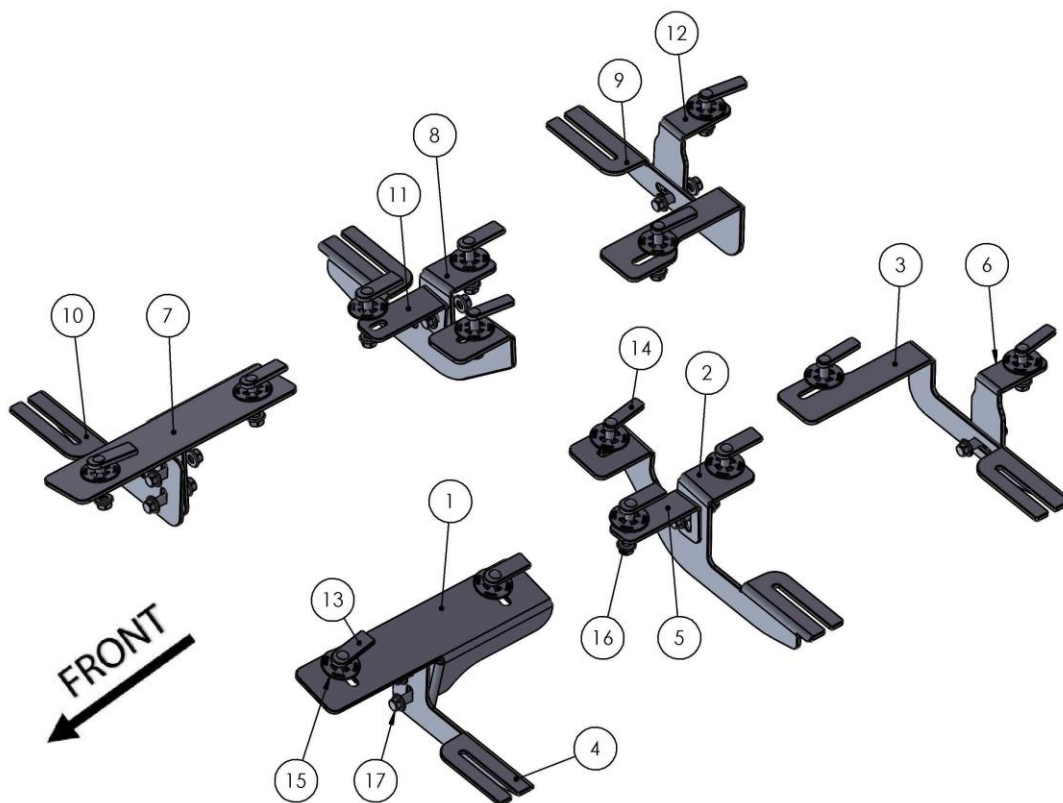
Installation Time: 120 Min

REV 1 01/25/22

Hardware	Torque Specifications
M6 Bolt	3 ft-lbs.
M8 Bolt	7 ft-lbs.
M10 Bolt	16 ft-lbs.
M12 Bolt	28 ft-lbs.

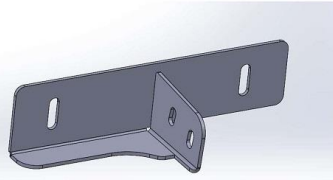
**ATTENTION:** Use correct torque settings to avoid damaging the running boards and or mounting brackets. Failure to do so will void your warranty.

If you have any questions please contact our technical team at 1-866-717-6645

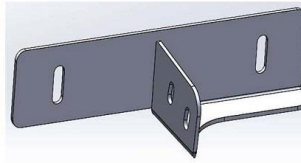


ITEM NO.	PART NUMBER	QTY.
1	4050 Front Main Driver	1
2	4050 Middle Main Driver	1
3	4050 Rear Main Driver	1
4	4050 Front Support Driver	1
5	4050 Middle Support Driver	1
6	4050 Rear Support Driver	1
7	4050 Front Main Passenger	1
8	4050 Middle Main Passenger	1
9	4050 Rear Main Passenger	1
10	4050 Front Support Passenger	1
11	4050 Middle Support Passenger	1
12	4050 Rear Support Passenger	1
13	HTC 230 - M10x25(5x20x60)	10
14	HTC 262 - M10x30 (5X15X60)	4
15	HTC 269 - CLIPS (M10)	14
16	M10 Flange Nut	22
17	M10x25 Flange Bolt	8

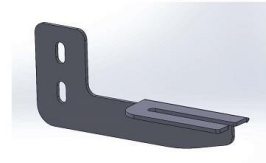
## 4050 - ATLAS



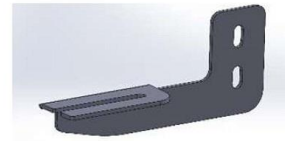
1  
**4050850F0**  
**DRIVER SIDE**  
**FRONT BRACKET**  
**1 x QTY**



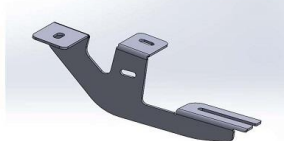
7  
**4050850F0**  
**PASSENGER SIDE**  
**FRONT BRACKET**  
**1 x QTY**



4  
**4050850F1**  
**DRIVER SIDE SUPPORT**  
**FRONT BRACKET**  
**1 x QTY**



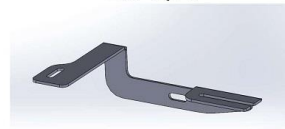
10  
**4050850F1**  
**PASSENGER SIDE SUPPORT**  
**FRONT BRACKET**  
**1 x QTY**



2  
**4050850C0**  
**DRIVER SIDE**  
**MIDDLE BRACKET**  
**1 x QTY**



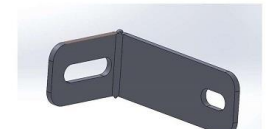
8  
**4050850C0**  
**PASSENGER SIDE**  
**MIDDLE BRACKET**  
**1 x QTY**



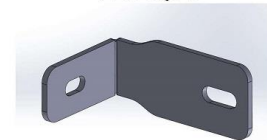
3  
**4050850R0**  
**DRIVER SIDE**  
**REAR BRACKET**  
**1 x QTY**



9  
**4050850R0**  
**DRIVER SIDE**  
**REAR BRACKET**  
**1 x QTY**

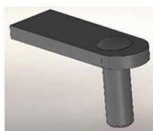


5  
**4050850C1**  
**DRIVER/PASSENGER SIDE**  
**MIDDLE BRACKET**  
**2 x QTY**



6  
**4050850R0**  
**DRIVER/PASSENGER SIDE**  
**REAR BRACKET**  
**2 x QTY**

## HARDWARE



**HTC 230-**  
**M10x25**  
**5x20x60**  
**10X**



**HTC 262-**  
**M10x30**  
**5x15x60**  
**4X**



**HTC 269-**  
**CLIPS - (M10)**  
**14x**



**M10 FLANGE**  
**NUT**  
**22x**

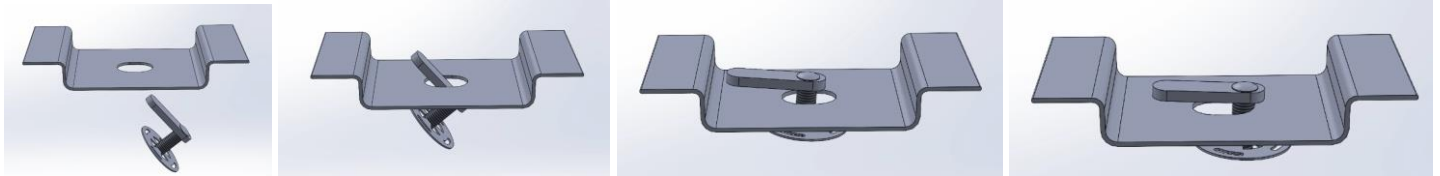


**M10x25**  
**FLANGE BOLT**  
**8x**

# Installation Instructions 4050 Bracket Kit

**Step 1:** **PROFESSIONAL INSTALLATION RECOMMENDED.** Remove bottom plastic panels. Note due to differences in years and models we suggest removing panels and trimming them after bracket installation.

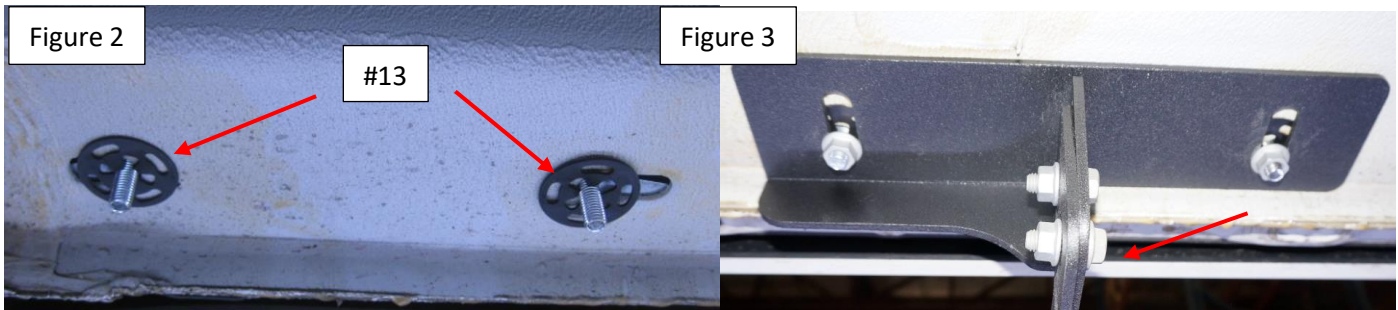
**Important Install Tip:** When installing Romik HTC inserts follow the sequence below. Make sure the HTC is seated correctly and do not use power tools as this will only spin the insert and possibly damage it. Test by tugging on it before installing bracket. **Blue loctite is highly recommended.**



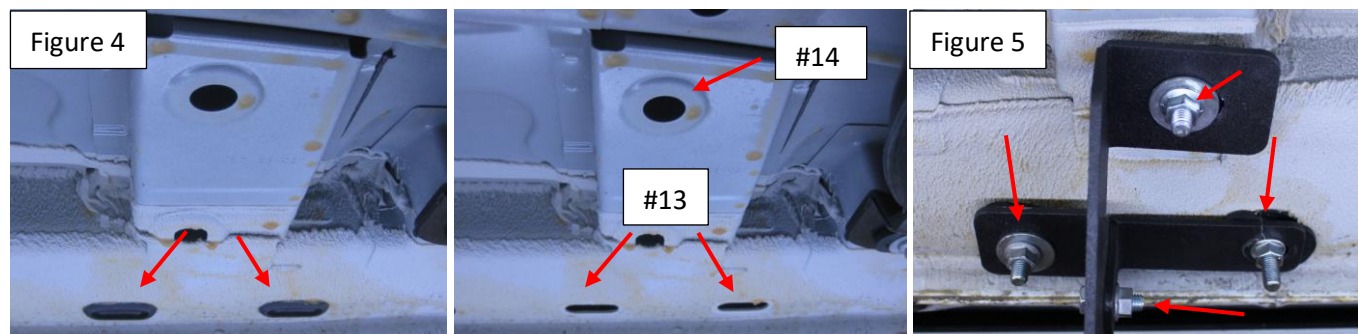
**Step 2:** Locate front hardware as per 1<sup>st</sup> page of this installation manual, locate the 2 rubber plugs shown on Figure 1. Remove and discard.



**Step 3:** Install provided HTC 230 #13 and installed as shown on Figure 1. Install front bracket #1 with support front bracket #4 using supplied hardware M10x25. Figure 3. Do not tighten



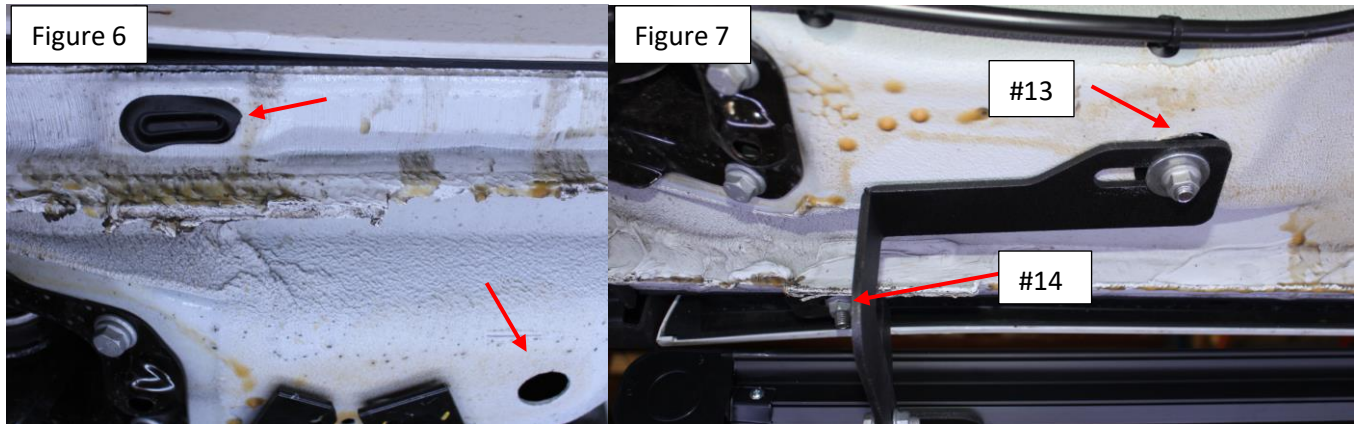
**Step 4:** Remove 2 rubber plugs as shown on Figure 4. Install HTC #13 and #14. Install middle brackets #2 and extra support #5 as shown Figure 5. Do not tighten.





# Installation Instructions 4050 Bracket Kit

**Step 5:** Locate rear mounting area, note for illustration purposes Figure 6 is passenger side and Figure 7 is driver's side. Install provided HTC #13 and #14. Attach bracket #3 and support #6 as shown. Do not tighten.

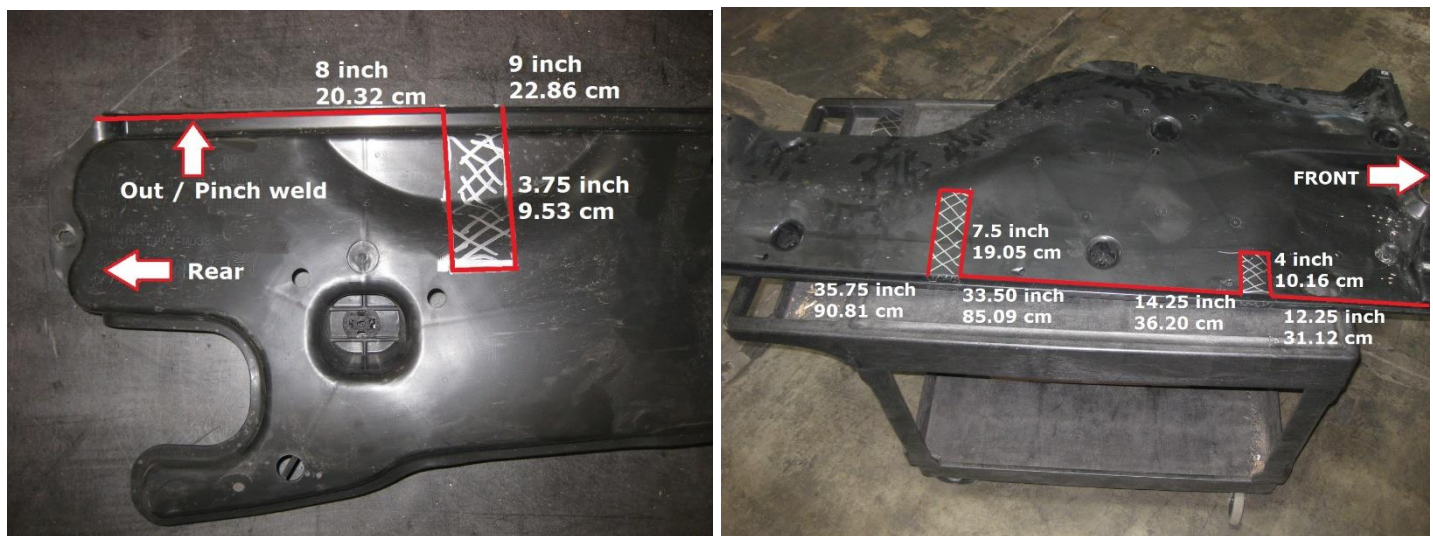


**Step 6:** Proceed to last page of this manual for running board install instructions and torque values

**Step 7: NOTE: Before trimming bring the panels up to their mounting positions and make markings wherever the brackets make contact with the panel. Measure twice before trimming. If your panels look different use the contact method and cut where the brackets make contact with the panel.** Prepare plastic panels for trimming. Starting from the front measure 12.25 inch / 31.12 cm make a marking. Make a second marking at 14.25 inch / 36.20 cm and cut a 4 inch / 10.16 cm section. Make a marking at 33.50 inch / 85.09 cm and again at 35.75 inch / 90.81 cm and cut a 7.5 inch / 19.05 cm section.

Move to the rear panel and starting at the back make a marking at 8 inch / 20.32 cm and 9 inch / 22.86 cm cut a 3.75 inch 9.53 cm section.

Proceed to install all plastic panels.



For Technical support please call our team at 1-866-717-6645 and one of our experts will assist you with this installation.

**Thank you for choosing Romik.**

# Running Board Installation Instructions

**NOTE: Use of power tools will damage the bottom of the running board and void your warranty.**



**RAL / RB2 / REC / RCV / RZR**



**ROB / ROF / RPD**

- 1) Flip your Romik running boards onto a flat surface, make sure to place the running boards on a towel or cardboard in order to protect the surface Figure 1.
- 2) Loosen the M8 bolts on back of your running boards Figure 2. Depending on your model there will be either 6 or 8 bolts installed per side.
- 3) Once your brackets have been installed, place the running board onto the brackets as shown on Figure 3.
- 4) Adjust running boards, centering on vehicle. Hand tight M8 hardware on running boards.
- 5) Follow the torque procedures, torque M8 hardware to **7 ft-lbs** using a torque wrench.
- 6) Cleaning and maintaining your running boards is important, apply a light coat of a quality carnauba wax at least 2X per year. Wash often with mild soap and make sure to remove all soap residue. Many car automatic carwashes use a strong soap, make sure to use enough water to remove all residue.
- 7) Register your products at <https://romik.com/productregistration>
- 8) Warranty information at [www.Romik.com/warranty](http://www.Romik.com/warranty)