



Installation Instructions

Part No. **3944 / 3953** Product: Running Boards

Application: **Toyota Highlander 2020 – Present**

Toyota Grand Highlander 2024 – Present

Lexus TX 2024 - Present

Level of Difficulty: 1 2 3 **4** 5

Professional Installation Time: 120 Min.

DIY Installation Time: 180 – 240 Min.

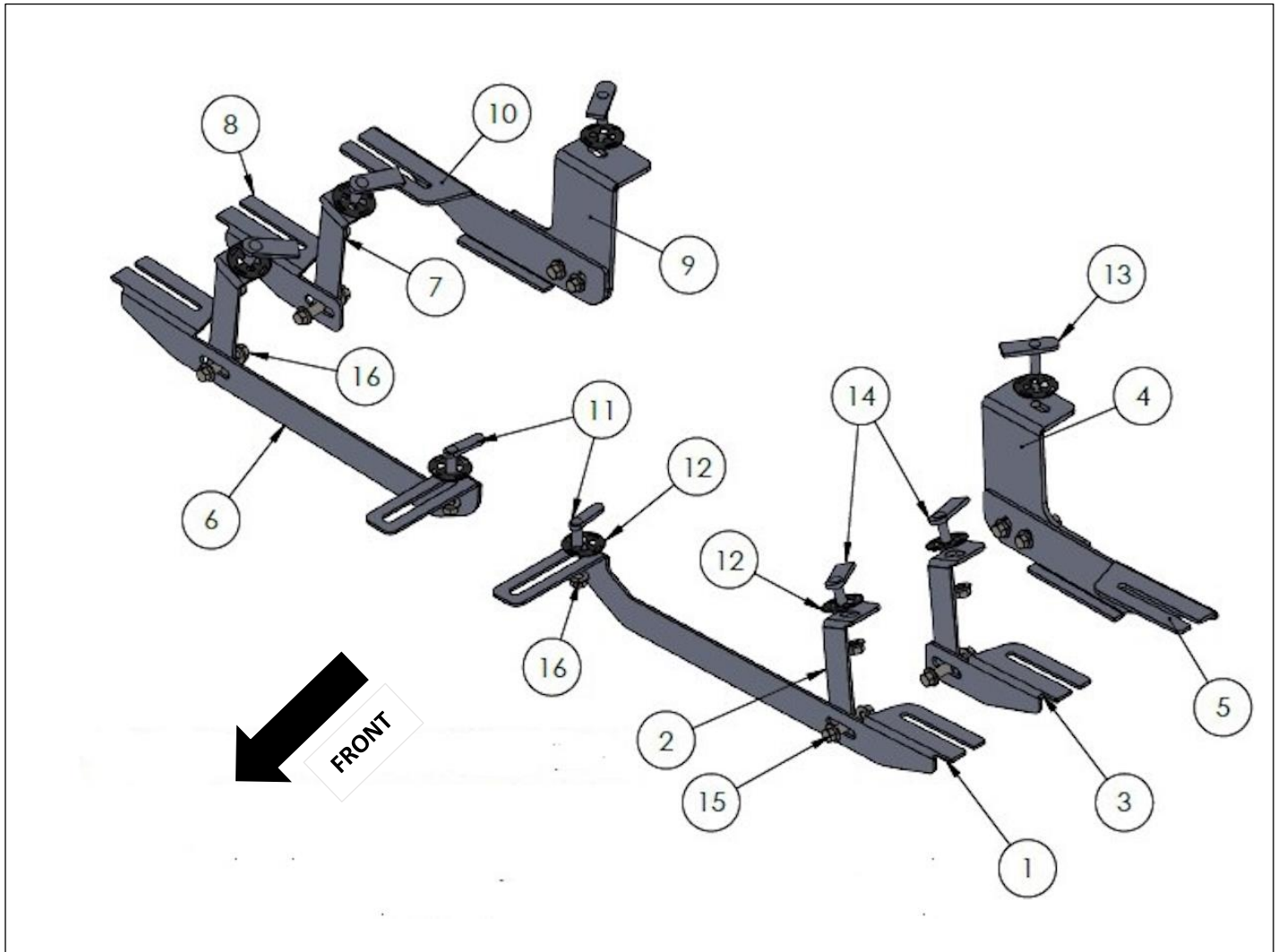
REV 7 06/01/25

Hardware	Torque Aluminum	Torque Steel to Steel
M6 Bolt	3 ft-lbs.	14 ft-lbs.
M8 Bolt	7 ft-lbs.	35 ft-lbs.
M10 Bolt	16 ft-lbs.	64 ft-lbs.
M12 Bolt	28 ft-lbs.	112 ft-lbs.

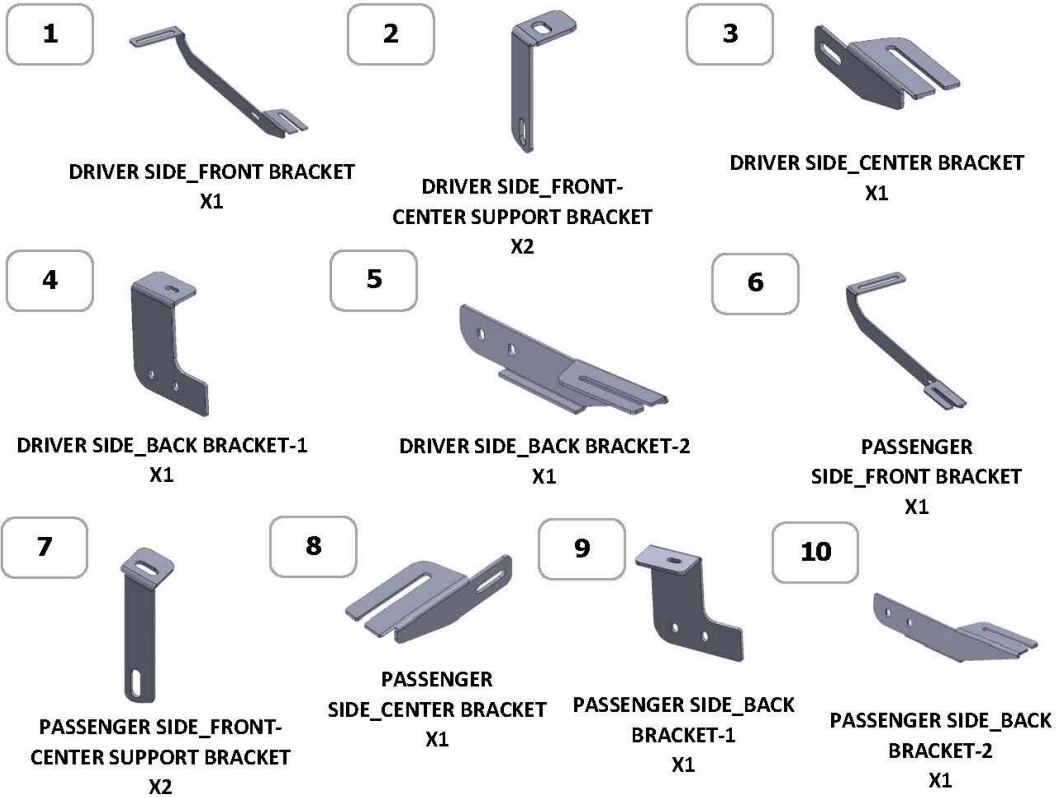
ATTENTION: Use correct torque settings to avoid damaging the running boards and or mounting brackets. Failure to do so will void your warranty. If you have any questions, please contact our technical team at 1-866-717-6645

Attention: Please make sure that you have the latest instructions from **Romik.com**

QR Scan



3944 / 3953 Hardware

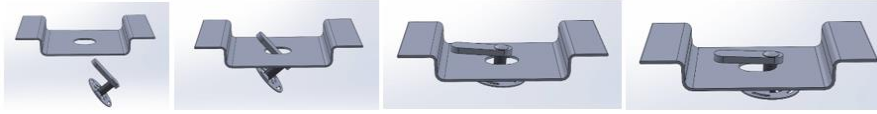


HARDWARE



Installation Instructions 3944 / 3953 Bracket Kit

Important Install Tip: When installing Romik HTC inserts follow the sequence below. Make sure the HTC is seated correctly and do not use power tools as this will only spin the insert and possibly damage it. Test by tugging on it before installing bracket. Blue loctite is highly recommended on all metal parts.



NOTE: This vehicle requires undercarriage trimming. For technical purposes we removed the panel to photograph the area. You do not have to remove the entire panel. **ATTENTION: VISIBLE GAP DUE TO VEHICLE BODY DESIGN ONLY WHEN DOOR IS OPEN.** See images at www.Romik.com

Professional Installation recommended



Step 1: Locate and separate all the brackets from the bracket box.

Step 2: Locate extra support mounting location Figure 1 (1st plug from front to rear) Install #14 HTC 230 Figure 2.



Installation Instructions 3944 / 3953 Bracket Kit



Step 3: Attach front extra support #2. Figure 3. Tighten to 16 ft-lbs.



Step 4: Using a 10mm socket, remove factory bolts holding the panel. Do not remove inner bolts as this is not necessary. Let the panel hang. Figure 4. This step shows the driver's side. Remove the rubber plug.



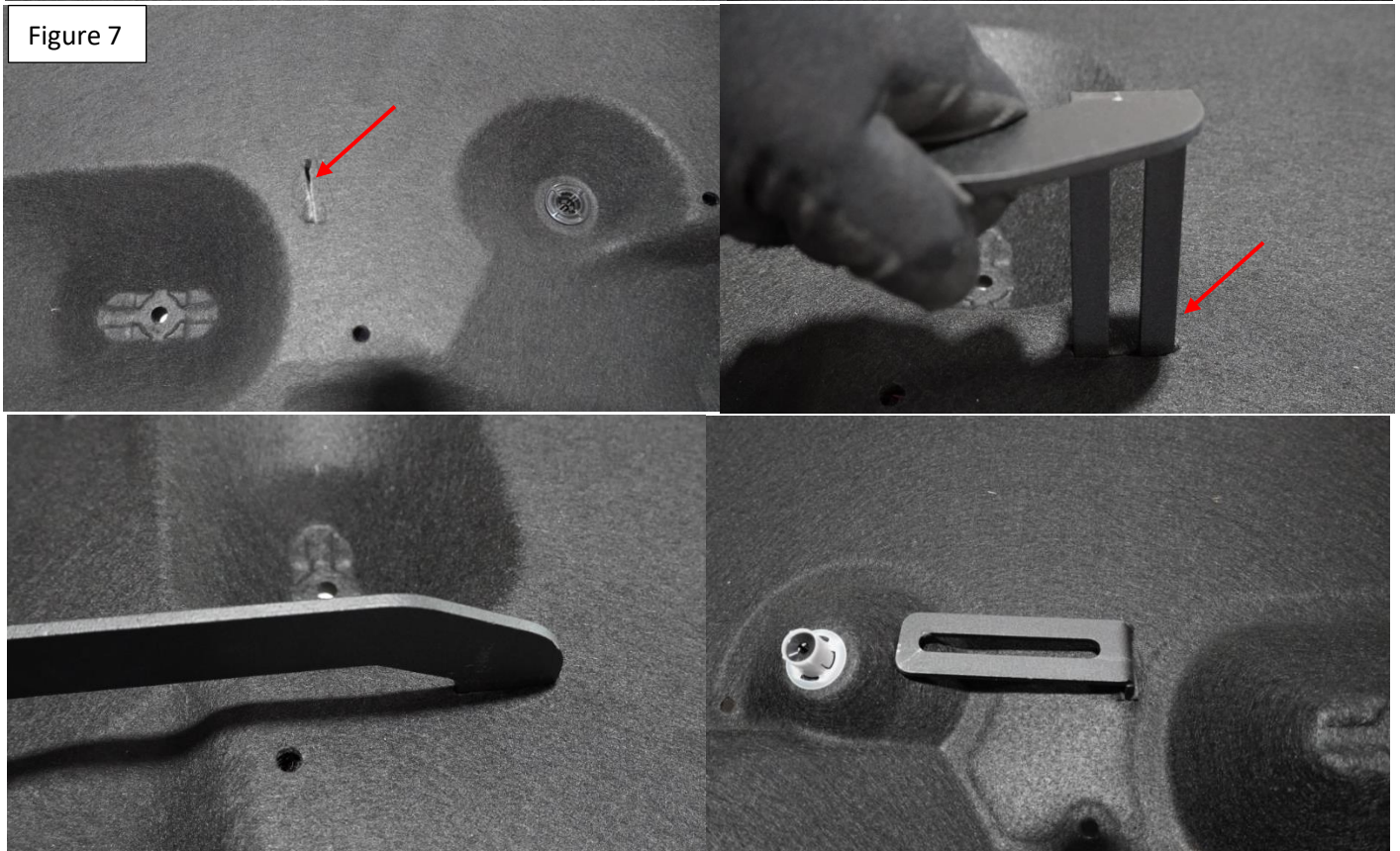
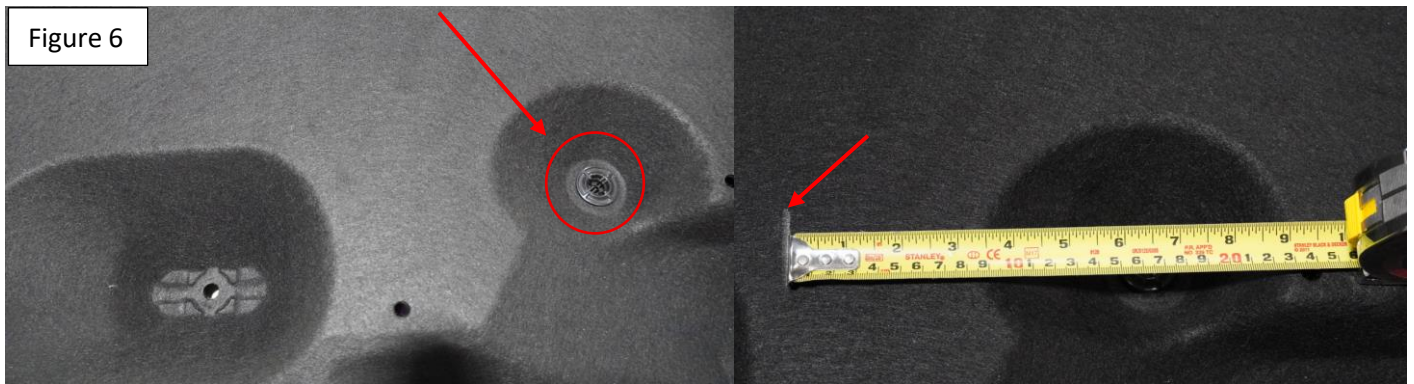
Installation Instructions 3944 / 3953 Bracket Kit

NOTE panels were removed to show process

Step 5: Install provided #11 HTC 243 as shown in Figure 5.

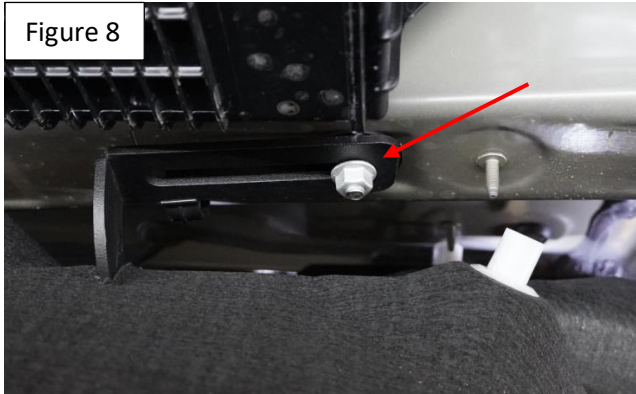


Step 6: Measure 6 ½ inches from push clip Figure 6. and mark small 2 ½ - inch line using a utility knife cut the panel. Push bracket through panel. As shown Figure 7.

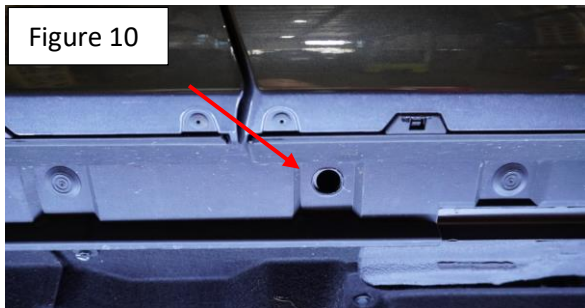


Installation Instructions 3944 / 3953 Bracket Kit

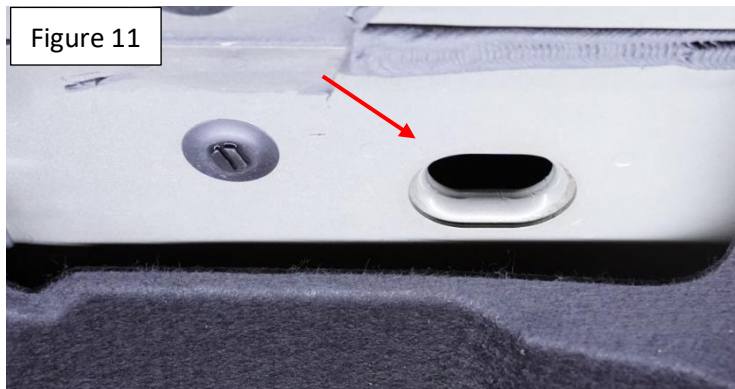
Step 7: Install main bracket #1 torque to 16 ft-lbs. Figure 8. Close panel using factory hardware and attach front main bracket to bracket #2 using #15 and #16 M10 hardware as shown in Figure 9. **DO NOT TIGHTEN**



Step 8: Remove factory rubber plug (4th plug on panel) Figure 5 install provided #14 HTC 243 and attached bracket #2 torque to 16 ft-lbs. Attach bracket #3 using provided #15, #16 M10 hardware. **DO NOT TIGHTEN.**

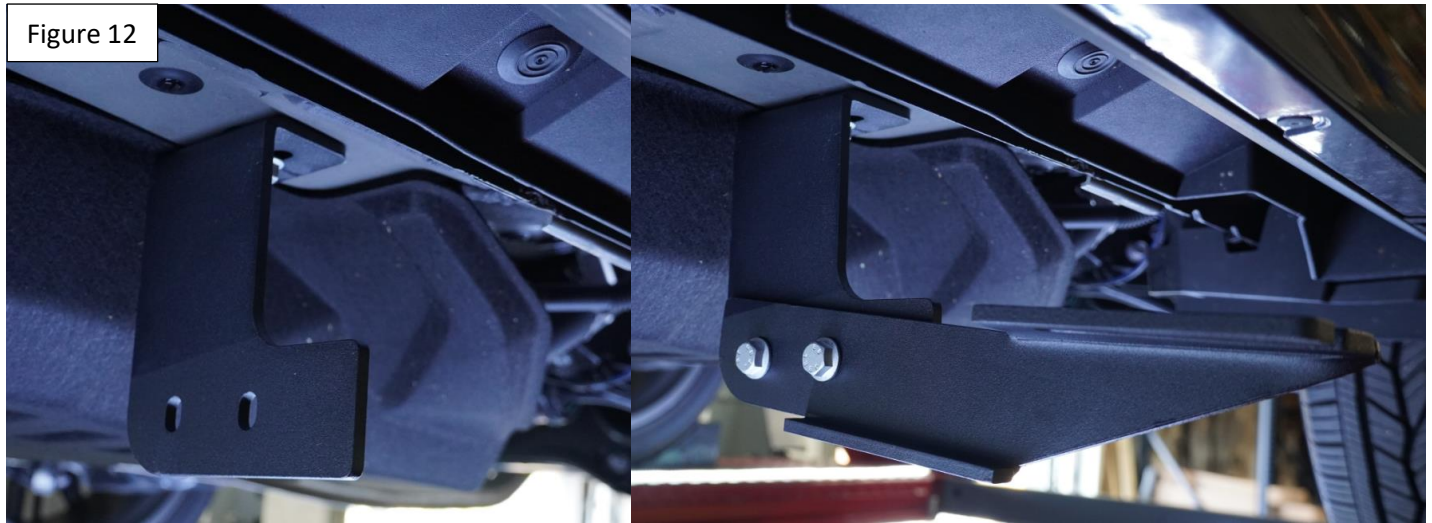


Step 9: Locate rear bracket mounting area and install provided #13 HTC 238 Figure 11.



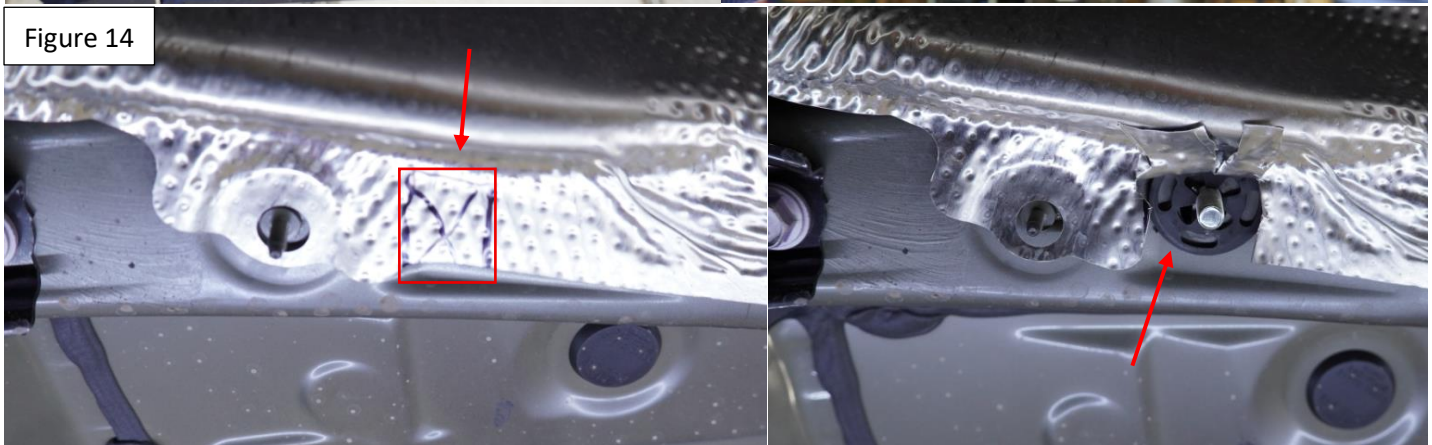
Installation Instructions 3944 / 3953 Bracket Kit

Step 9: Install bracket #4 torque to 16 ft-lbs. Attach bracket #5 using provided #15, #16 Figure 12 DO NOT TIGHTEN



Pasenger side: The process is the same as driver's side. You can remove panel if necessary as it may help with the installation.

Step 10: After removing panel pry down on aluminum shield to expose rubber plug. Trim a 3 x 4 area to expose the mousing position Figure 14. Install # 11 HTC 243.

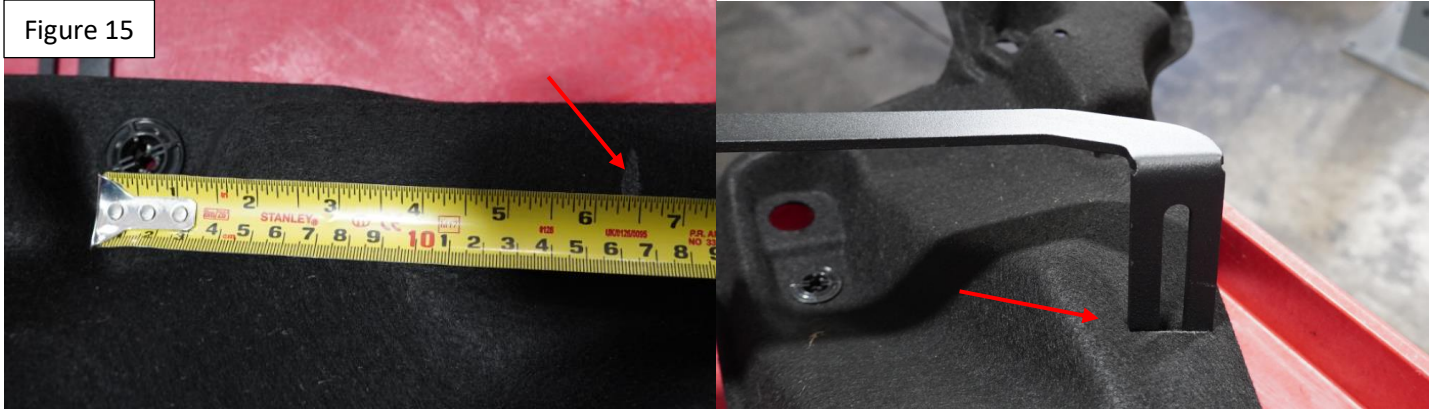


Installation Instructions 3944 / 3953 Bracket Kit

Step 11: Repeat step #2 and #3 installing bracket #7.

Step 12: Prepare panel for cutting. Measure 6 ½ inch from push clip. Make a 2 ½ inch cut and push front bracket through.

Figure 15



Step 13: Install main bracket #6 torque to 16 ft-lbs. Figure 16. Close panel using factory hardware and attach front main bracket to bracket #7 using #15 and #16 M10 hardware as shown in Figure 17. DO NOT TIGHTEN.

Figure 16

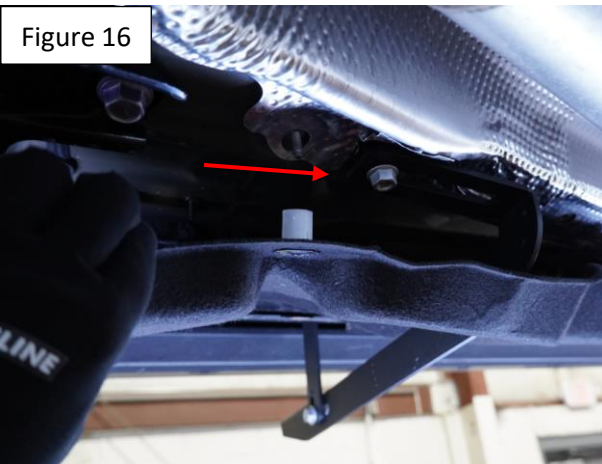


Figure 17



Step 14: Repeat step #8 using brackets #7 and #8

Step 15: Locate rear bracket mounting area, trim aluminum shield as shown in Figure 18. Remove rubber plug and install provided #13 HTC 238

Figure 18



Installation Instructions 3944 / 3953 Bracket Kit

Step 15: Install bracket #9 torque to 16 ft-lbs. Attach bracket #10 using provided #15, #16 Figure 19 DO NOT TIGHTEN

Figure 19



Step 16: Proceed to the last page of this manual and install running boards. TIP use a level to achieve the best fitment. Torque M10 hardware to 64 ft-lbs. If necessary torque to 73 ft-lbs.

Note: Please check hardware after 1,000 miles.

For Technical support please call our team at 1-866-717-6645 and one of our experts will assist you with this installation.

Thank you for choosing



Installation Instructions Running Boards

NOTE: Use of power tools will damage the bottom of the running board and void your warranty.

Step 1: loosen the M8 hardware on back of the running boards.

Step 2: Slide running board onto brackets

Step 3: Tighten hardware to 7 ft lbs.

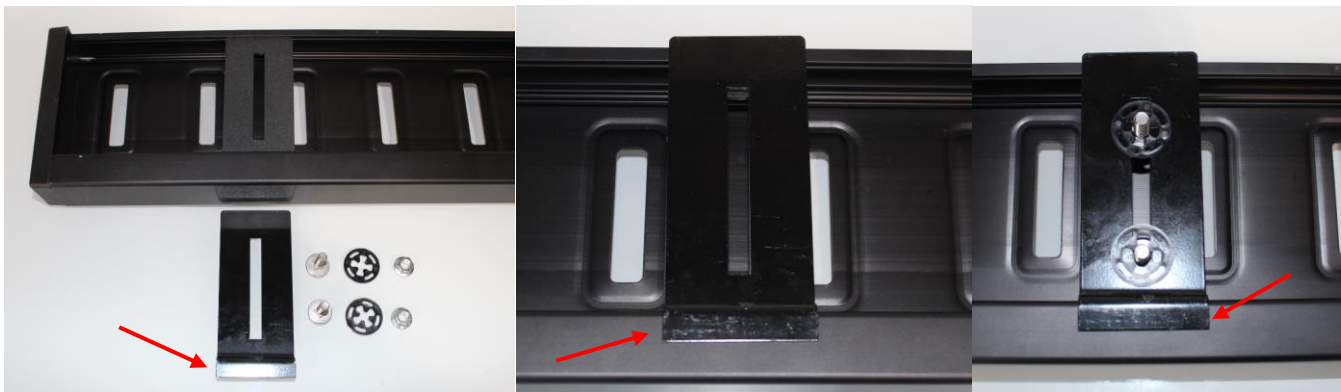


ROF/RPD/ROB Running boards

Step 1: Place clamping plate on top of running board as shown below. Make sure clamping plate sits correctly on running board surface.

Step 2: Install carriage bolts and plastic retaining clips as shown below.

Step 3: Install and tighten hardware to 7 ft lbs.



Product Registration and Warranty Information

- Register your Romik products at <https://romik.com/productregistration>
- Warranty information at <http://www.romik.com/warranty>



Cleaning and maintaining your Romik Running boards

Cleaning and maintaining your running boards is important, apply a light coat of a quality carnauba wax at least 2X per year. Wash often with mild soap and make sure to remove all soap residue. Many car automatic carwashes use a strong soap, make sure to use enough water to remove all residue.

For video instructions on how to clean your Romik products please click here <https://romik.com/cleaning>