



## Installation Instructions

Part No. **3614**

Product: Running Boards

Application:

**Subaru Forester 2014 - 2018**

Level of Difficulty: 1 2 **3** 4 5

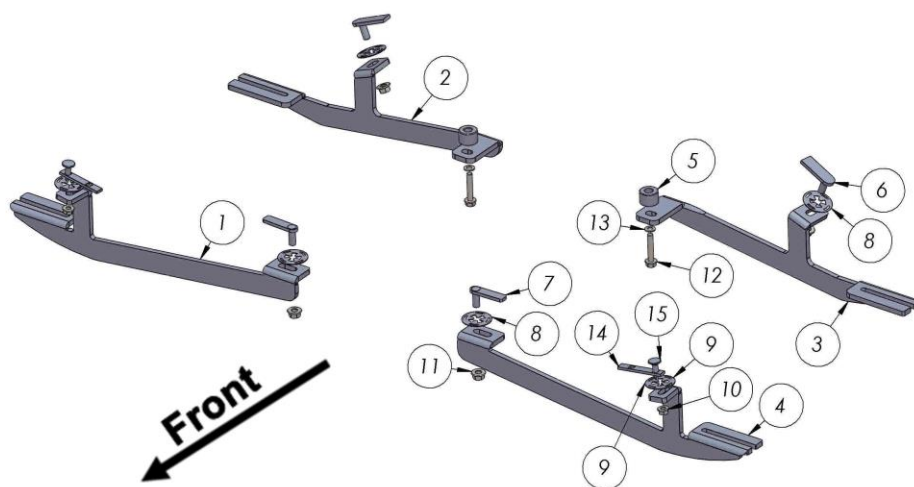
Installation Time: 90 min.

REV 3 04/15/21

Hardware	Torque Specifications
M6 Bolt	3 ft-lbs.
M8 Bolt	7 ft-lbs.
M10 Bolt	16 ft-lbs.
M12 Bolt	28 ft-lbs.

**ATTENTION:** Use correct torque settings to avoid damaging the running boards and or mounting brackets. Failure to do so will void your warranty.

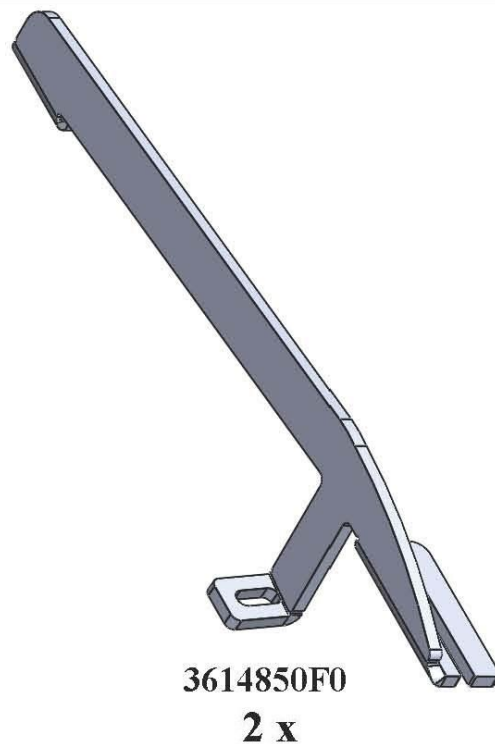
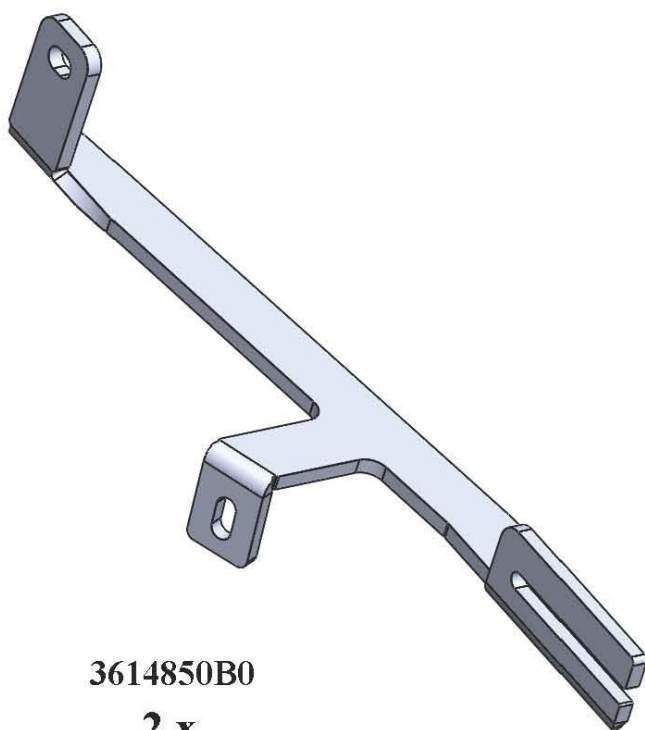
If you have any questions please contact our technical team at 1-866-717-6645



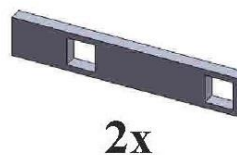
ITEM/NO	PART NAME/PARÇA ADI	QTY/ADET
1	3614100850F0 PASSENGER	1
2	3614100850B0 PASSENGER	1
3	3614100850B0 DRIVER	1
4	3614100850F0 DRIVER	1
5	SPECIAL PIPE - 10 x 19	2
6	HTC 230 - M10x25(5x20x60)	2
7	HTC 262 - M10X30 (5X15X60)	2
8	HTC 269 - KLIPS (M10)	4
9	HTC 271 - CLIPS (M8)	2
10	DIN 6923 FLANGE NUT - M8	2
11	DIN 6923 FLANGE NUT - M10	4
12	DIN 6921 FLANGE BOLT - M8 x 45	2
13	DIN 125 WASHER - M8	2
14	SPECIAL PART	2
15	HTC 290 M8	2



## 3614 - FORESTER 2014 - 2018

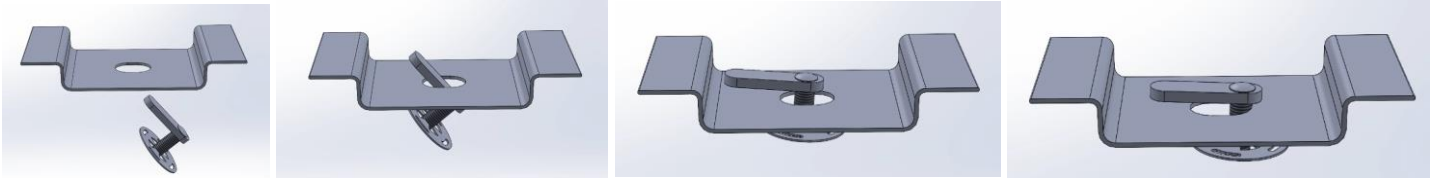


### HARDWARE

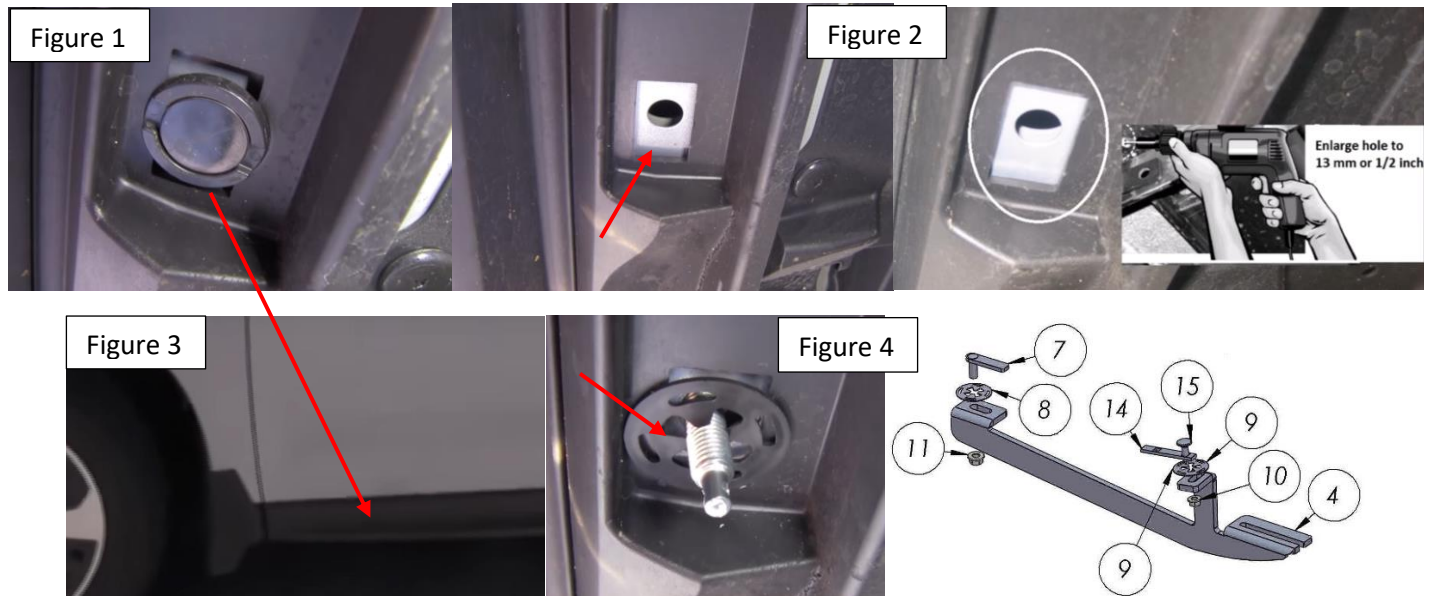


# Installation Instructions 3614 Bracket Kit

**Important Install Tip:** When installing Romik HTC inserts follow the sequence below. Make sure the HTC is seated correctly and do not use power tools as this will only spin the insert and possibly damage it. Test by tugging on it before installing bracket. Blue loctite is highly recommended.



**Step 1:** NOTE: This vehicle requires drilling: Locate the outer cladding plug which is located under the door sill, remove and enlarge with a 13mm or ½ inch drill bit. Install HTC290 as shown on Figure 4.



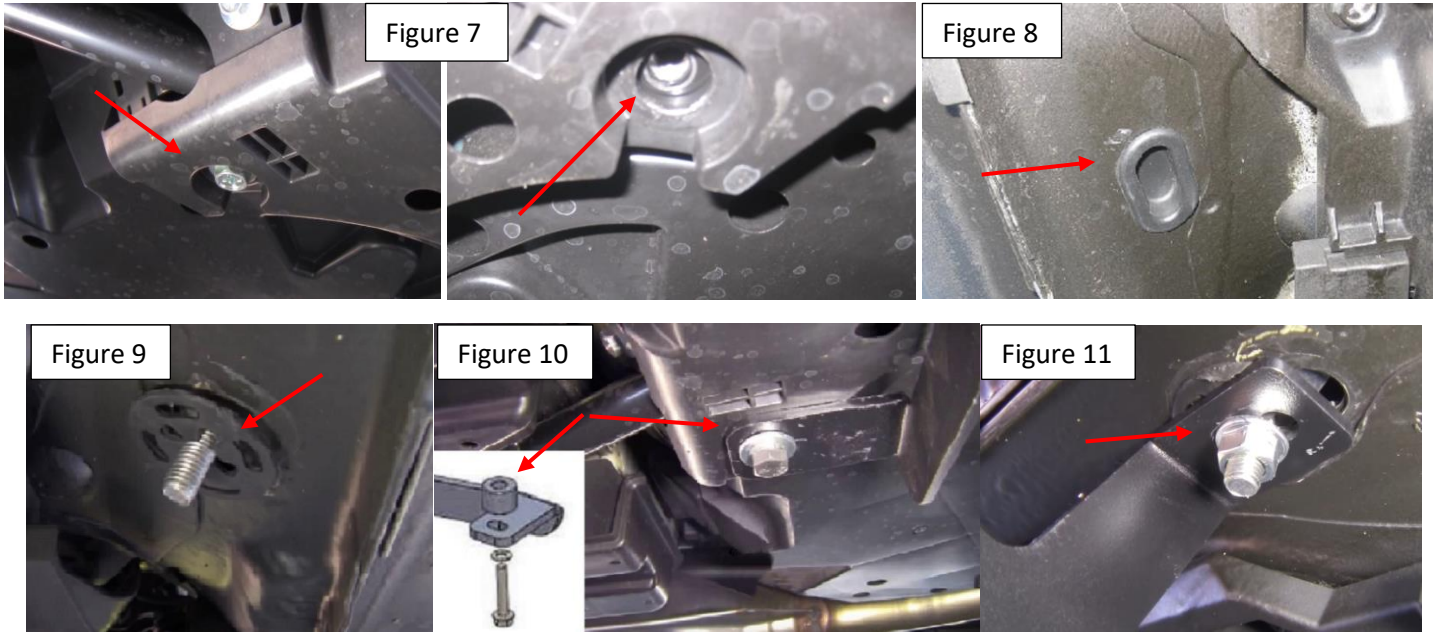
**Step 2:** Using the front bracket as a guide place the bracket in position to mark the rear mounting point. Cut a 2 x 2 section to expose the hole Figure 5. Install provided HTC 262 as shown Figure 6



**Step 3:** Install front bracket. Do not tighten.

# Installation Instructions 3614 Bracket Kit

**Step 4:** Locate rear bracket mounting area and remove factory bolt Figure 7. Locate outer plug as shown on Figure 8 and remove. Install provided HTC 230 as shown Figure 9. Install provided spacer into open cavity and proceed to install rear bracket using supplied M8 x 45 #12 Figure 10 Do not tighten. Attach front section of bracket to HTC 230 Figure 11. Do not tighten.



**Step 5:** Proceed to last page of this manual for running board install instructions and torque values

For Technical support please call our team at 1-866-717-6645 and one of our experts will assist you with this installation.

**Thank you for choosing Romik.**



# Running Board Installation Instructions

**NOTE: Use of power tools will damage the bottom of the running board and void your warranty.**



**RAL / RB2 / REC / RCV / RZR**



**ROB / ROF / RPD**

- 1) Flip your Romik running boards onto a flat surface, make sure to place the running boards on a towel or cardboard in order to protect the surface Figure 1.
- 2) Loosen the M8 bolts on back of your running boards Figure 2. Depending on your model there will be either 6 or 8 bolts installed per side.
- 3) Once your brackets have been installed, place the running board onto the brackets as shown on Figure 3.
- 4) Adjust running boards, centering on vehicle. Hand tight M8 hardware on running boards.
- 5) Follow the torque procedures, torque M8 hardware to **7 ft-lbs** using a torque wrench.
- 6) Cleaning and maintaining your running boards is important, apply a light coat of a quality carnauba wax at least 2X per year. Wash often with mild soap and make sure to remove all soap residue. Many car automatic carwashes use a strong soap, make sure to use enough water to remove all residue.
- 7) Register your products at <https://romik.com/productregistration>
- 8) Warranty information at [www.Romik.com/warranty](http://www.Romik.com/warranty)