



## Installation Instructions

Part No. **2811**

Product: Running Boards

Application:

Land Rover LR4 2005-2016

Land Rover Discovery 2005-2016

Level of Difficulty: 1 2 **3** 4 5

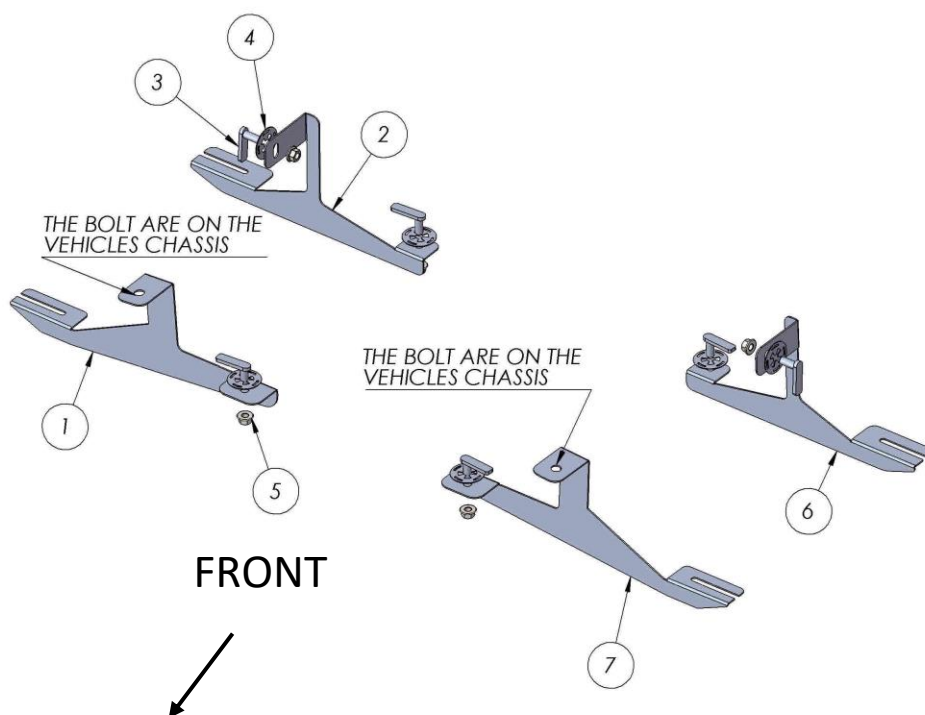
Installation Time: 90 min

REV 2 01/15/22

Hardware	Torque Specifications
M6 Bolt	3 ft-lbs.
M8 Bolt	7 ft-lbs.
M10 Bolt	16 ft-lbs.
M12 Bolt	28 ft-lbs.

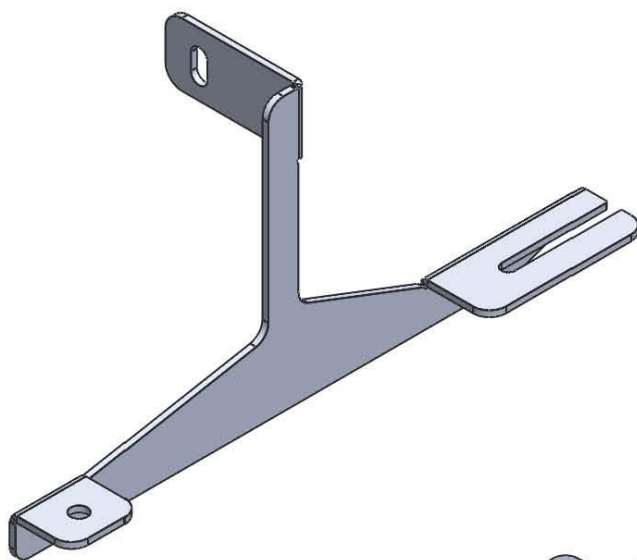
**ATTENTION:** Use correct torque settings to avoid damaging the running boards and or mounting brackets. Failure to do so will void your warranty.

If you have any questions please contact our technical team at 1-866-717-6645



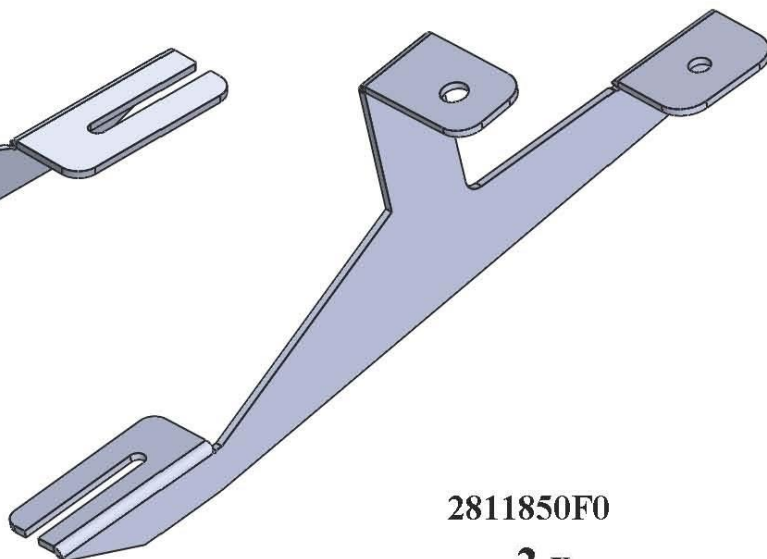
ITEM	PART NAME	QTY
1	2811850F0 PASSENGER	1
2	28111B0 PASSENGER	1
3	HTC 243 - M10x25(5x13x50)	6
4	HTC 269 CLIPS (M10)	6
5	DIN 6923 FLANGE NUT M10	6
6	28111B0 DRIVER	1
7	2811850F0 DRIVER	1

## 2811 Land Rover LR4 2005-2016



2811850B0

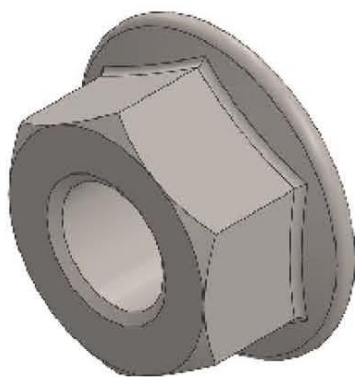
**2 x**



2811850F0

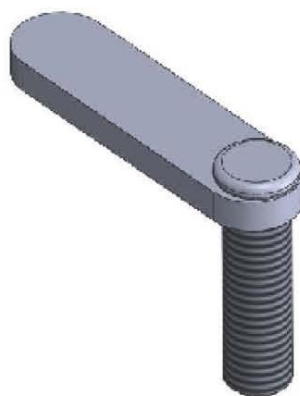
**2 x**

### HARDWARE



DIN 6923  
M10

**6x**



HTC 243  
M10x25(5x13x50)

**6x**

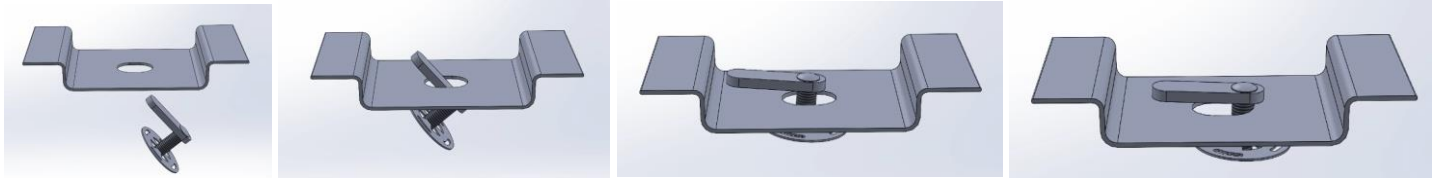


HTC 269  
KLIPS (M10)

**6x**

# Installation Instructions 2811 Bracket Kit

**Important Install Tip:** When installing Romik HTC inserts follow the sequence below. Make sure the HTC is seated correctly and do not use power tools as this will only spin the insert and possibly damage it. Test by tugging on it before installing bracket. Blue loctite is highly recommended.



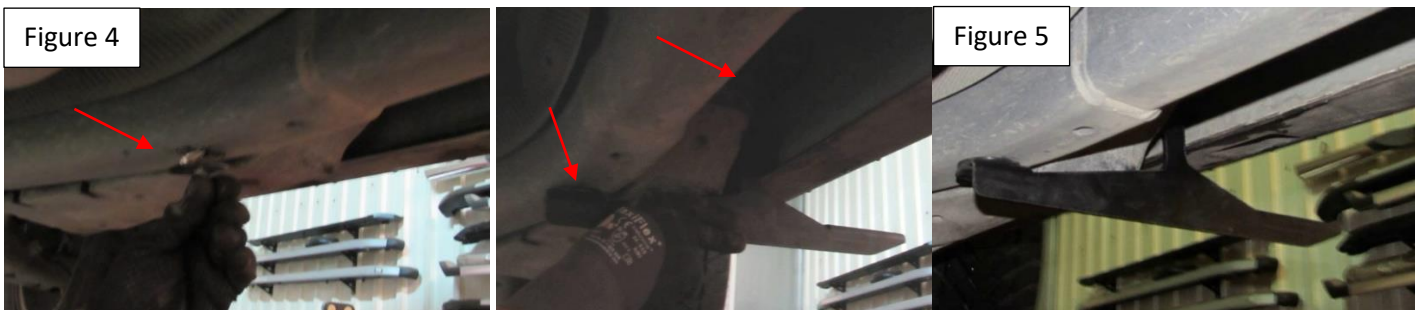
**Step 1:** Locate front body mount as shown, install provided HTC #3 into open hole Figure 1. Remove body mount and install bracket as shown on Figure 2. Attach to body. Do not tighten.



**Step 2:** NOTE on vehicles equipped with rear AC you will need to rearrange the AC hose so that it allows our bracket to mount. Simple job requiring you to loosen the clamp and move the hoses Figure 2. Install HTC #3 as shown on Figure 3



**Step 3:** Install provided HTC #3 Figure 4. Install rear bracket as shown Figure 5 do not tighten.



**Step 4:** Proceed to last page of this manual for running board install instructions and torque values

For Technical support please call our team at 1-866-717-6645 and one of our experts will assist you with this installation.

**Thank you for choosing Romik.**

# Running Board Installation Instructions

**NOTE: Use of power tools will damage the bottom of the running board and void your warranty.**



**RAL / RB2 / REC / RCV / RZR**



**ROB / ROF / RPD**

- 1) Flip your Romik running boards onto a flat surface, make sure to place the running boards on a towel or cardboard in order to protect the surface Figure 1.
- 2) Loosen the M8 bolts on back of your running boards Figure 2. Depending on your model there will be either 6 or 8 bolts installed per side.
- 3) Once your brackets have been installed, place the running board onto the brackets as shown on Figure 3.
- 4) Adjust running boards, centering on vehicle. Hand tight M8 hardware on running boards.
- 5) Follow the torque procedures, torque M8 hardware to **7 ft-lbs** using a torque wrench.
- 6) Cleaning and maintaining your running boards is important, apply a light coat of a quality carnauba wax at least 2X per year. Wash often with mild soap and make sure to remove all soap residue. Many car automatic carwashes use a strong soap, make sure to use enough water to remove all residue.
- 7) Register your products at <https://romik.com/productregistration>
- 8) Warranty information at [www.Romik.com/warranty](http://www.Romik.com/warranty)