



Installation Instructions

REV 3 01/13/2022

Part No. **2130**

Product: Running Boards

Application:

Ford Explorer 2011-2019

Level of Difficulty: **1** 2 3 4 5

Installation Time: 60 Min

Hardware	Torque Specifications
----------	-----------------------

M6 Bolt	3 ft-lbs.
---------	-----------

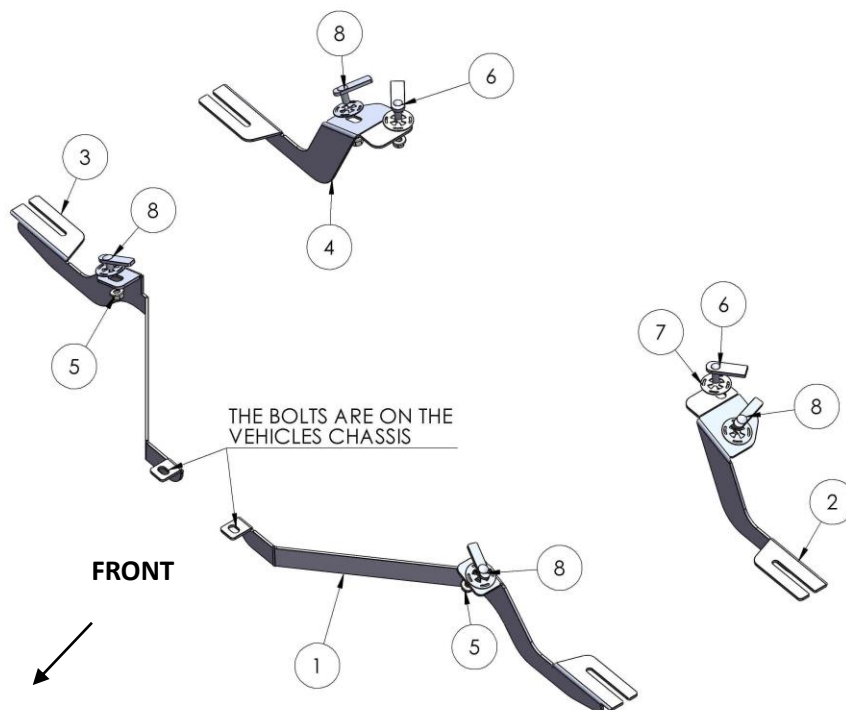
M8 Bolt	7 ft-lbs.
---------	-----------

M10 Bolt	16 ft-lbs.
----------	------------

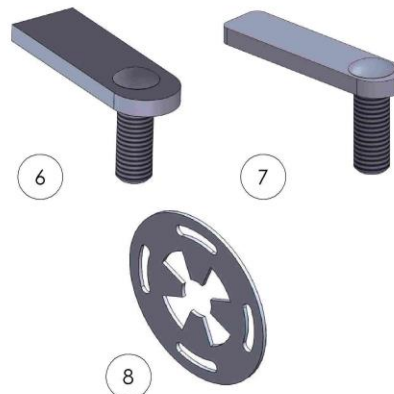
M12 Bolt	28 ft-lbs.
----------	------------

ATTENTION: Use correct torque settings to avoid damaging the running boards and or mounting brackets. Failure to do so will void your warranty.

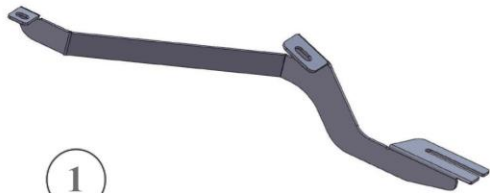
If you have any questions please contact our technical team at 1-866-717-6645



ITEM	PART NAME	QTY
1	2130850F0 DRIVER	1
2	2130850B0 DRIVER	1
3	2130850F0 PASSENGER	1
4	2130850B0 PASSENGER	1
5	DIN 6923 FLANGE NUT M10	6
6	HTC 230 - M10x25(5x20x60)	2
7	HTC 269 - CLIPS (M10)	6
8	HTC 232 - M10x20	4



2130 - EXPLORER 2011 - 2019



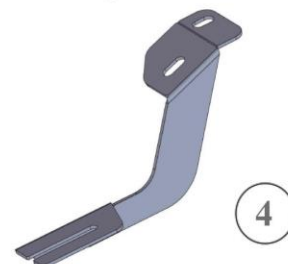
①
2130850F0
DRIVER SIDE
FRONT BRACKET
1 x QTY



②
2130850B0
DRIVER SIDE
REAR BRACKET
1 x QTY



③
2130850F0
PASSENGER SIDE
FRONT BRACKET
1 x QTY



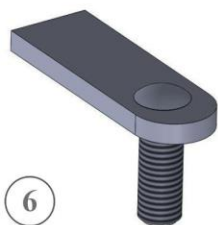
④
2130850B0
PASSENGER SIDE
REAR BRACKET
1 x QTY

HARDWARE



⑤
DIN 6923
FLANGE NUT
- M10

6x



⑥
HTC 230 -
M10x25
(5x20x60)

2x



⑦
HTC 269 -
CLIPS - (M10)

6x

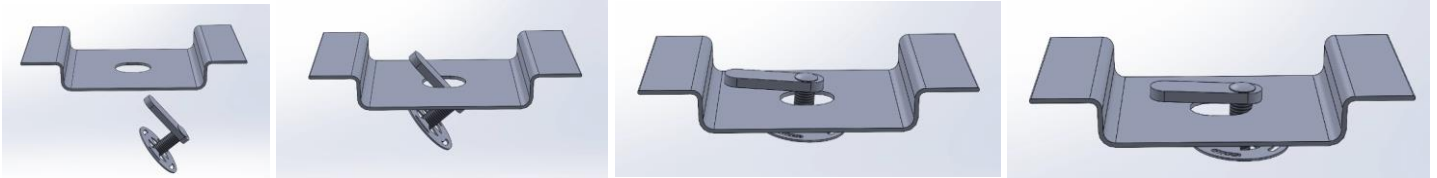


⑧
HTC 232 -
M10x20
(5X15X60)

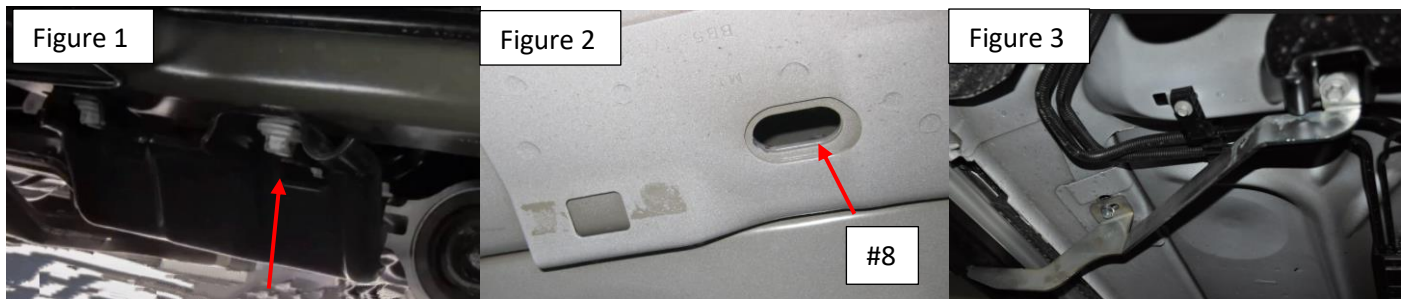
4x

Installation Instructions 2130 Bracket Kit

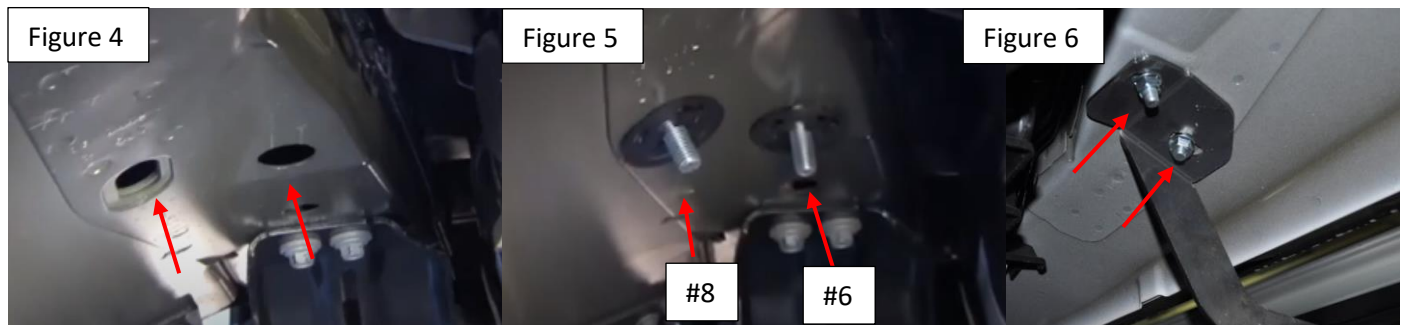
Important Install Tip: When installing Romik HTC inserts follow the sequence below. Make sure the HTC is seated correctly and do not use power tools as this will only spin the insert and possibly damage it. Test by tugging on it before installing bracket. Blue loctite is highly recommended.



Step 1: Locate front bracket mounting area. Remove factory crossmember bolt (there are two on the crossmember, remove the outer most) this will be reused. Figure 1. Install provided HTC #8 Figure 2. Install main front bracket using factory bolt and M10 hardware Figure 3. Do not tighten



Step 2: Locate rear mounting area Figure 4. Install HTC #6 and #8 as shown Figure 5. Install rear bracket using supplied M10 hardware Figure 6. Do not tighten.



Step 3: Proceed to last page of this manual for running board install instructions and torque values

For Technical support please call our team at 1-866-717-6645 and one of our experts will assist you with this installation.

Thank you for choosing Romik.

Running Board Installation Instructions

NOTE: Use of power tools will damage the bottom of the running board and void your warranty.



RAL / RB2 / REC / RCV / RZR



ROB / ROF / RPD

- 1) Flip your Romik running boards onto a flat surface, make sure to place the running boards on a towel or cardboard in order to protect the surface Figure 1.
- 2) Loosen the M8 bolts on back of your running boards Figure 2. Depending on your model there will be either 6 or 8 bolts installed per side.
- 3) Once your brackets have been installed, place the running board onto the brackets as shown on Figure 3.
- 4) Adjust running boards, centering on vehicle. Hand tight M8 hardware on running boards.
- 5) Follow the torque procedures, torque M8 hardware to **7 ft-lbs** using a torque wrench.
- 6) Cleaning and maintaining your running boards is important, apply a light coat of a quality carnauba wax at least 2X per year. Wash often with mild soap and make sure to remove all soap residue. Many car automatic carwashes use a strong soap, make sure to use enough water to remove all residue.
- 7) Register your products at <https://romik.com/productregistration>
- 8) Warranty information at www.Romik.com/warranty