



Installation Instructions

REV 5 03/30/26

Part No. **2823**

Product: Running Boards

Application: **Land Rover Defender 90/110/130**

Level of Difficulty: 1 2 **3** 4 5

Professional Installation Time: 90 Min.

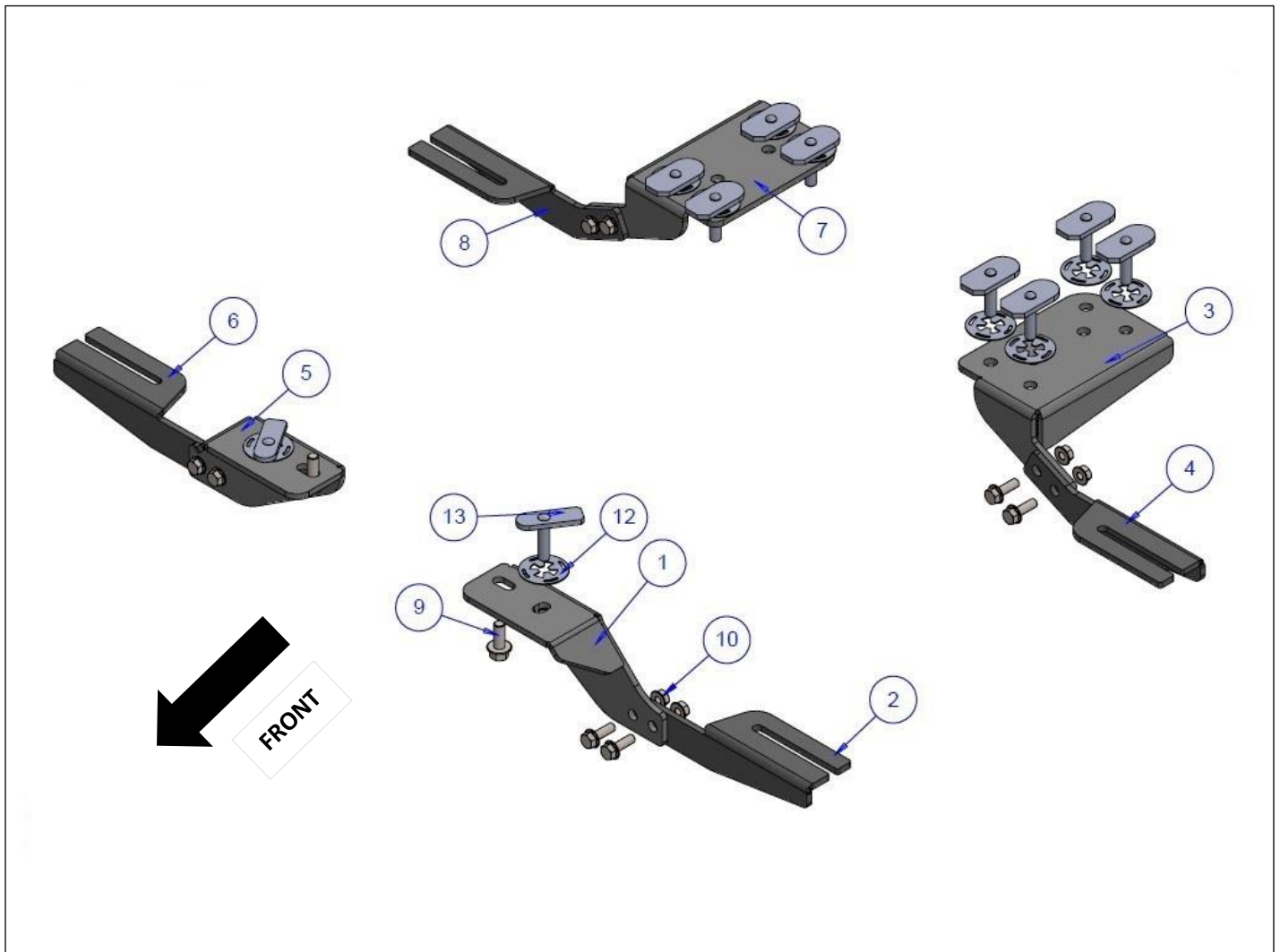
DIY Installation Time: 180 Min

Hardware	Torque Aluminum	Torque Steel to Steel
M6 Bolt	3 ft-lbs.	14 ft-lbs.
M8 Bolt	7 ft-lbs.	35 ft-lbs.
M10 Bolt	16 ft-lbs.	64 ft-lbs.
M12 Bolt	28 ft-lbs.	112 ft-lbs.

ATTENTION: Use correct torque settings to avoid damaging the running boards and or mounting brackets. Failure to do so will void your warranty. If you have any questions, please contact our technical team at 1-866-717-6645.

Attention: Please make sure that you have the latest instructions from *Romik.com*

QR Scan



2823



1

**DRIVER SIDE
FRONT BRACKET-1
1 x QTY**



2

**DRIVER SIDE
FRONT BRACKET-2
1 x QTY**



3

**DRIVER SIDE
REAR BRACKET-1
1 x QTY**



4

**DRIVER SIDE
REAR BRACKET-2
1 x QTY**



5

**PASSENGER SIDE
FRONT BRACKET-1
1 x QTY**



6

**PASSENGER SIDE
FRONT BRACKET-2
1 x QTY**



7

**PASSENGER SIDE
REAR BRACKET-1
1 x QTY**



8

**PASSENGER SIDE
REAR BRACKET-2
1 x QTY**

HARDWARE



9

**M10x25 HEX
FLANGE BOLT
10x**



10

**M10 HEX
FLANGE NUT
18x**



11

**HTC 326 - M10x40
(5x34x60)
8x**



12

**HTC269 -
CLIPS M10
10x**

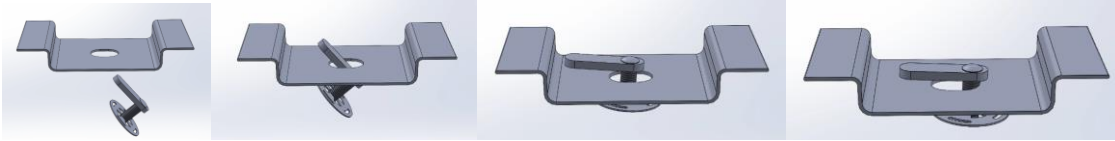


13

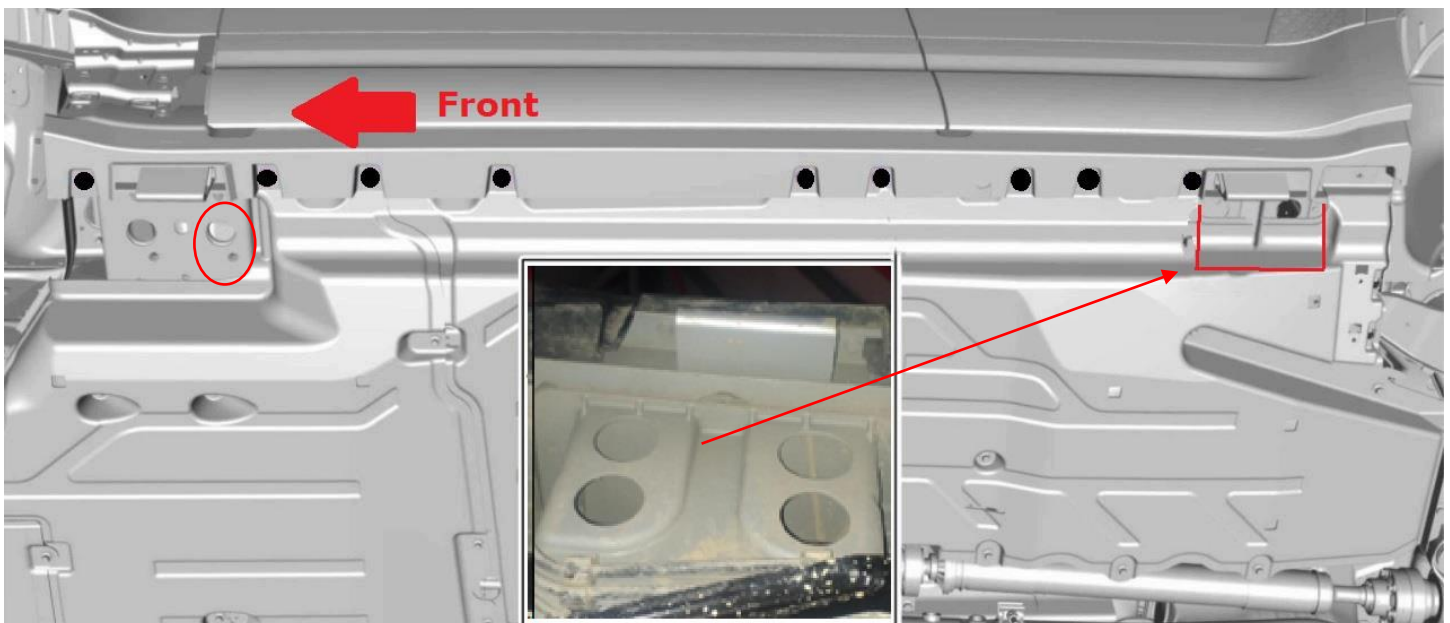
**HTC 328 - M10x40
(5x20x60)
2x**

Installation Instructions 2823 Bracket Kit

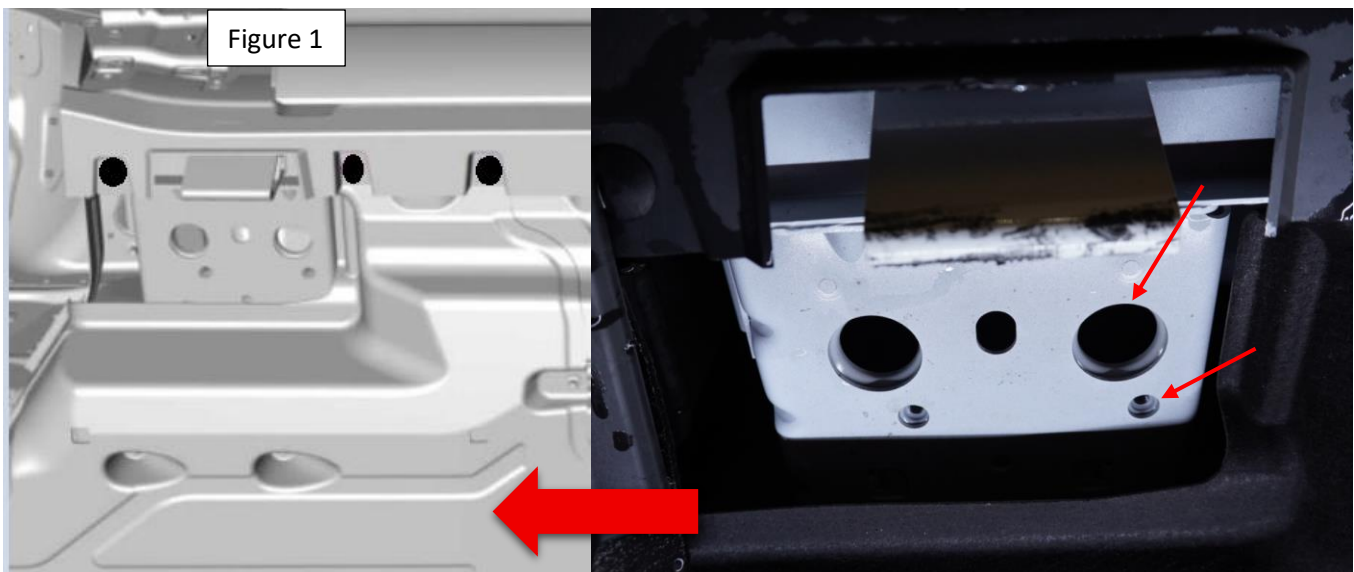
Important Install Tip: When installing Romik HTC inserts follow the sequence below. Make sure the HTC is seated correctly and do not use power tools as this will only spin the insert and possibly damage it. Test by tugging on it before installing bracket. **Blue loctite is highly recommended.**



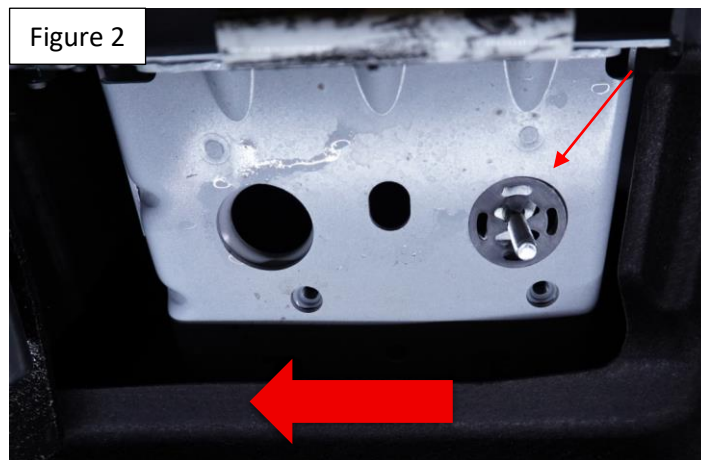
NOTE: Minor trimming is required. Please read below and follow instructions. Trim a 5 x 7-inch section on the felt material as shown below. You must expose the mounting points indicated by the red arrow. **ATTENTION** do not remove panels; this procedure must be done with panels installed.



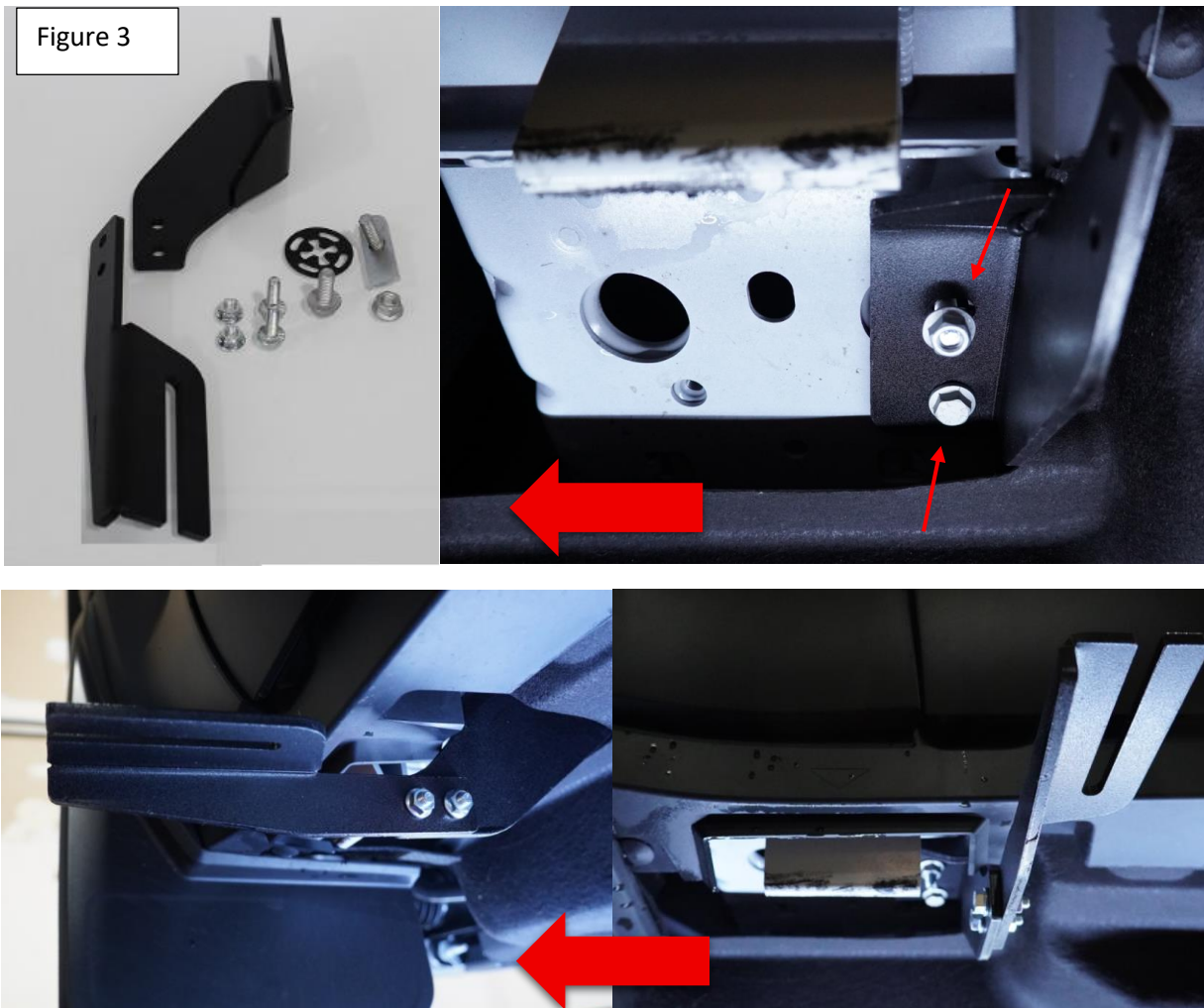
Step 1: Locate front mounting locations as show on Figure 1. Note Red arrow points towards the front of the vehicle (driver's side). Install provided HTC 238 as shown Figure 2



Installation Instructions 2823 Bracket Kit

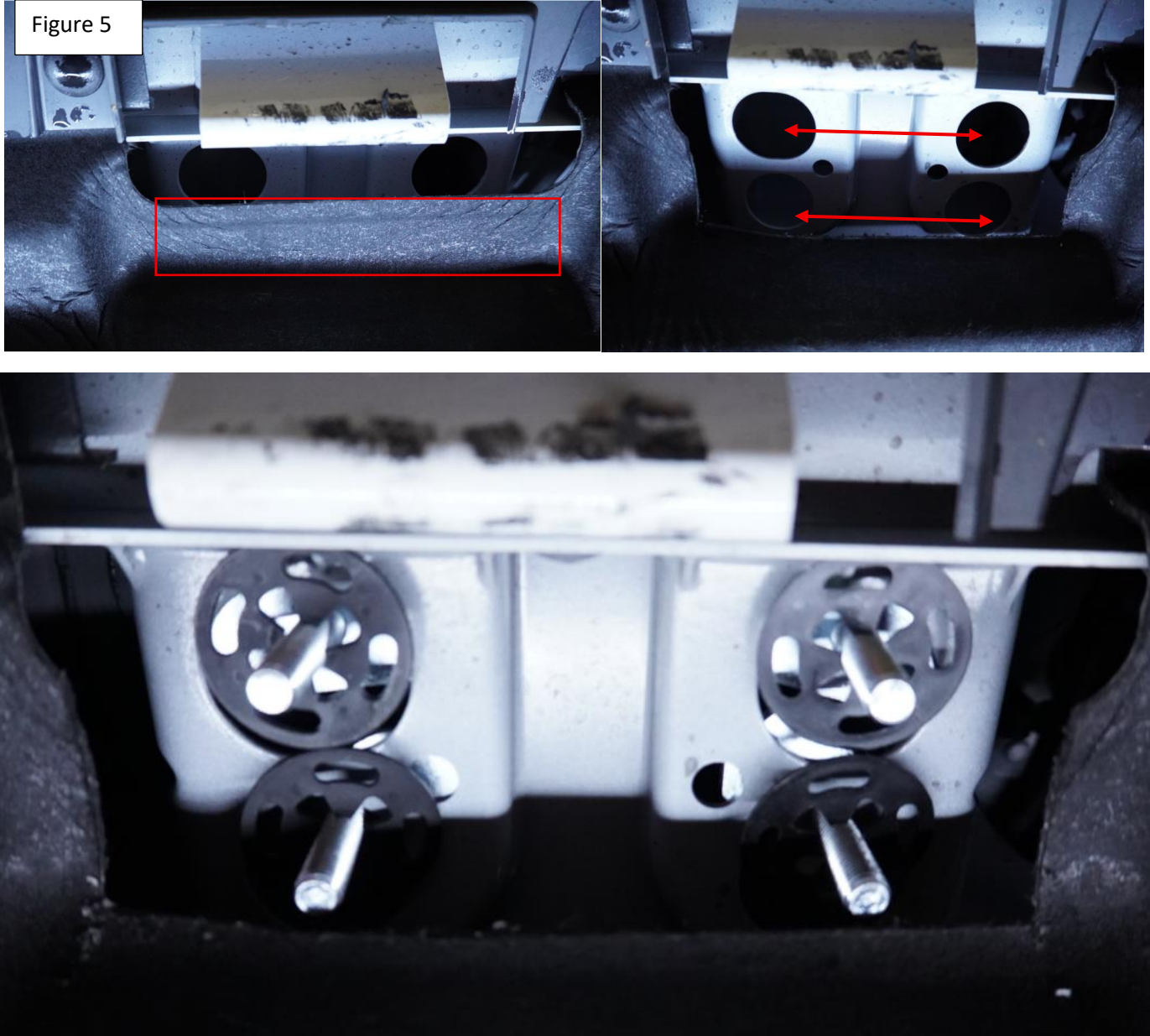


Step 2: Assemble and install front bracket using supplied M10 bolt and HTC 238 as shown on Figure 3. TIP:: Some vehicles may require chasing the threads to remove extra paint or dirt before installing 10mm bolt. **Do not fully tighten.**



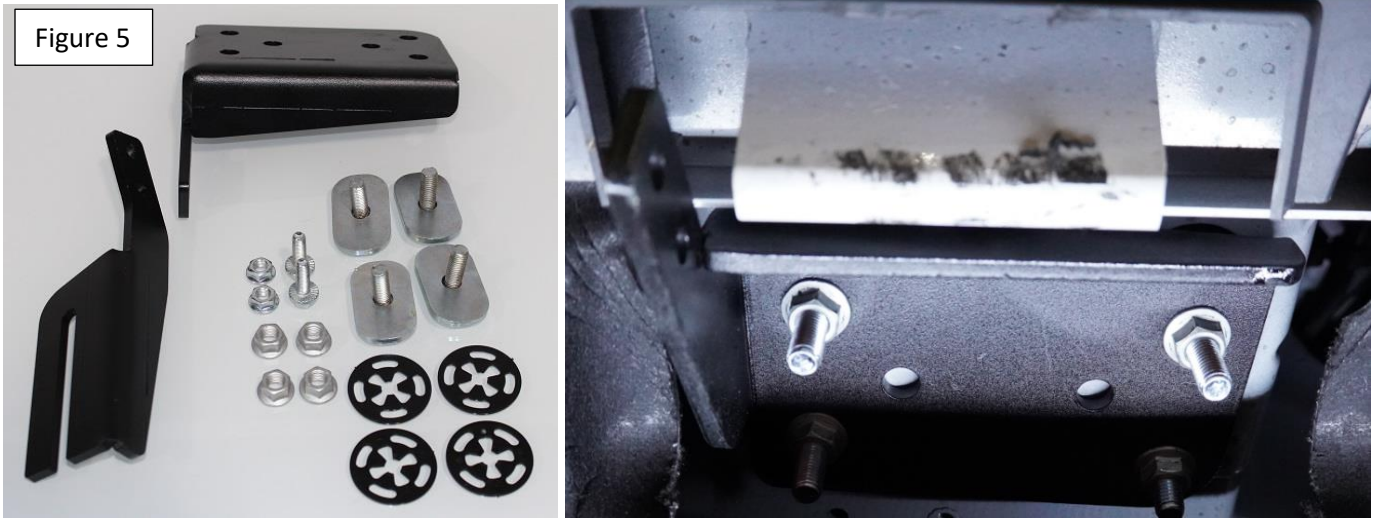
Installation Instructions 2823 Bracket Kit

Step 3: Trim felt panel and fold it inward. Install provided all 4 HTC 238 as shown Figure 5.



Installation Instructions 2823 Bracket Kit

Step 4: Assemble and install rear bracket as shown in Figure 5. **Do not fully tighten.**



Step 5: Due to the different variants of the Defender the brackets are designed to be adjustable. Snug all hardware on brackets and running boards to align to desired position. Proceed to torque main brackets to vehicle M10 hardware to 40 lbs. Proceed to torque bracket lower parts to 64 lbs **TIP: Place a folded piece of cardboard on both sides of the running boards to make sure there will be enough clearance for the doors to open, tighten brackets.**



Installation Instructions 2823 Bracket Kit

Step 6: Proceed to last page of this manual for running board install instructions and torque values. Max torque is 7 ft lbs. Do not overtighten as this may damage the running boards.



For Technical support please call our team at 1-866-717-6645 and one of our experts will assist you with this installation.

Thank you for choosing Romik.

Installation Instructions Running Boards

NOTE: Use of power tools will damage the bottom of the running board and void your warranty.

Step 1: loosen the M8 hardware on back of the running boards.

Step 2: Slide running board onto brackets

Step 3: Tighten hardware to 7 ft lbs.

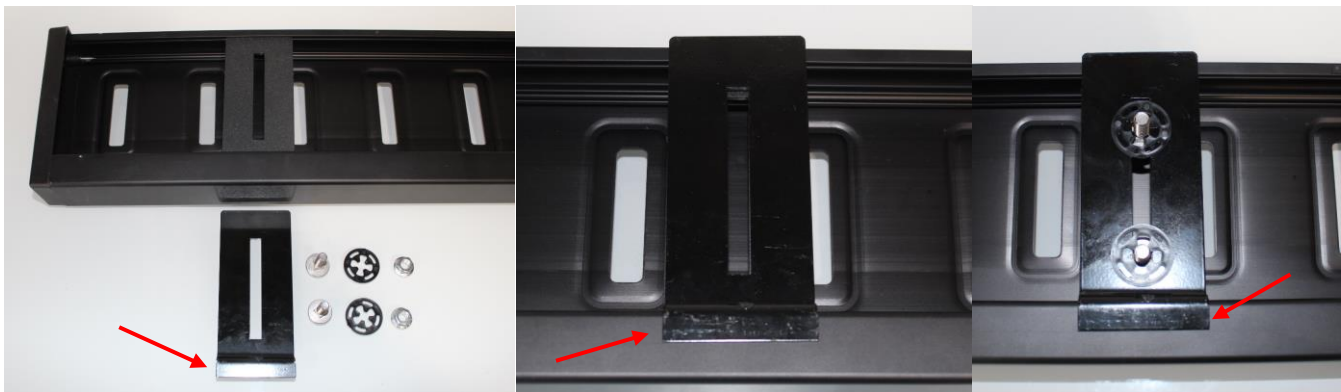


ROF/RPD/ROB Running boards

Step 1: Place clamping plate on top of running board as shown below. Make sure clamping plate sits correctly on running board surface.

Step 2: Install carriage bolts and plastic retaining clips as shown below.

Step 3: Install and tighten hardware to 7 ft lbs.



Product Registration and Warranty Information

- Register your Romik products at <https://romik.com/productregistration>
- Warranty information at <http://www.romik.com/warranty>



Cleaning and maintaining your Romik Running boards

Cleaning and maintaining your running boards is important, apply a light coat of a quality carnauba wax at least 2X per year. Wash often with mild soap and make sure to remove all soap residue. Many car automatic carwashes use a strong soap, make sure to use enough water to remove all residue.

For video instructions on how to clean your Romik products please click here <https://romik.com/cleaning>