



Installation Instructions

REV 7 12/02/21

Part No. **3027**

Product: Running Boards

Application:

MB Sprinter 2007+

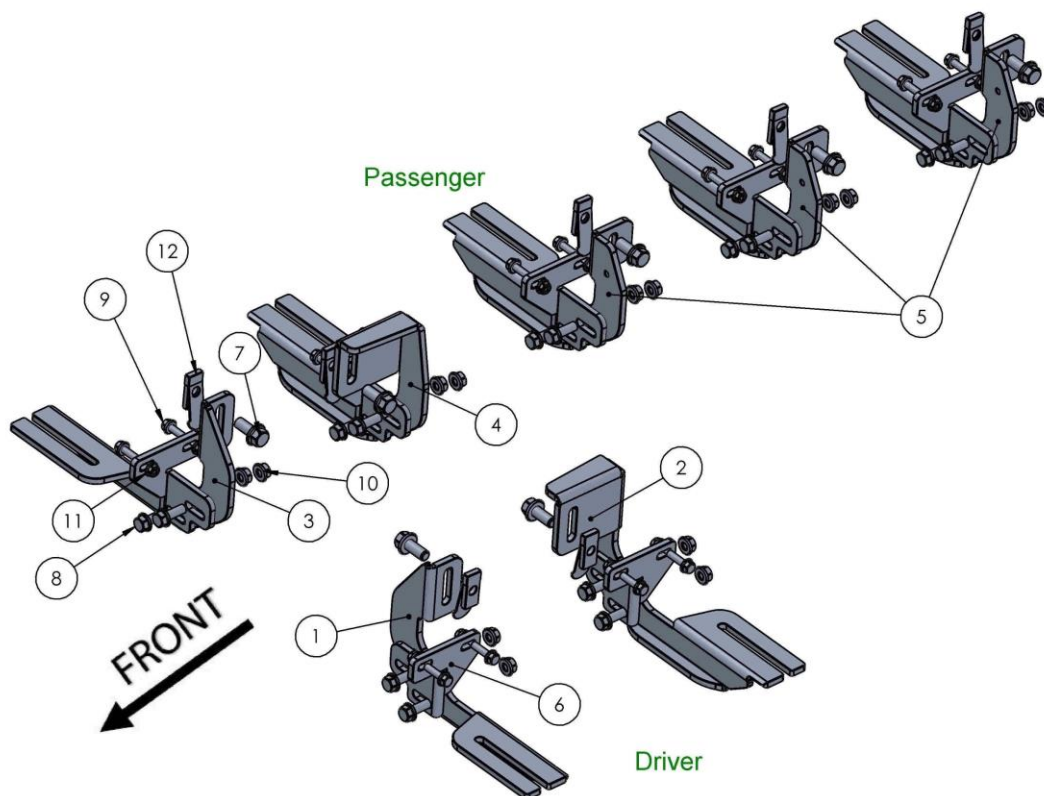
Level of Difficulty: 1 2 3 4 **5**

Installation Time: **120 + Min**

Hardware	Torque Specifications
M6 Bolt	3 ft-lbs.
M8 Bolt	7 ft-lbs.
M10 Bolt	16 ft-lbs.
M12 Bolt	28 ft-lbs.

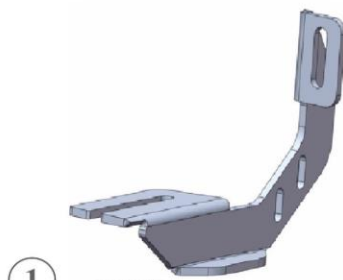
ATTENTION: Use correct torque settings to avoid damaging the running boards and or mounting brackets. Failure to do so will void your warranty.

If you have any questions, please contact our technical team at 1-866-717-6645

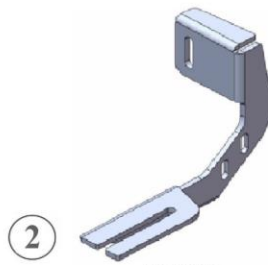


ITEM NO.	PART NUMBER	QTY.
1	Driver Side Front Bracket	1
2	Driver Side Rear Bracket	1
3	Passenger Side Front Bracket	1
4	Passenger Side Middle Bracket	1
5	Passenger Side Rear Bracket	3
6	Support Bracket	7
7	M10x25 Flange Bolt	7
8	M8x25 Flange Bolt	14
9	M6x25 Flange Bolt	14
10	M8 Flange Nut	14
11	M6 Flange Nut	14
12	HTC 286 - M10 (38x16x5)	7

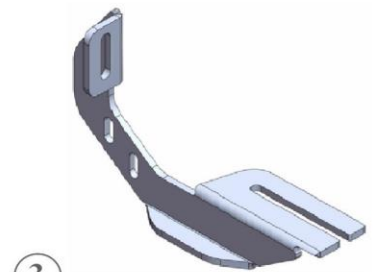
3027- SPRINTER



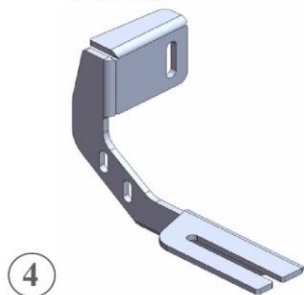
①
3027850
DRIVER SIDE
FRONT BRACKET
1 x QTY



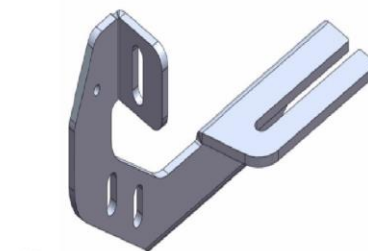
②
3027850
DRIVER SIDE
REAR BRACKET
1 x QTY



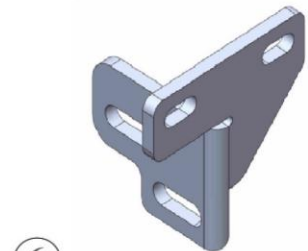
③
3027850
PASSENGER SIDE
FRONT BRACKET
1 x QTY



④
3027850
PASSENGER SIDE
MIDDLE BRACKET
1 x QTY

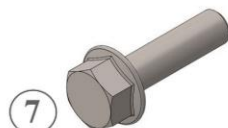


⑤
3027850
PASSENGER SIDE
REAR BRACKET
3 x QTY

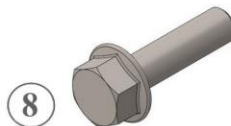


⑥
3027850
SUPPORT BRACKET
7 x QTY

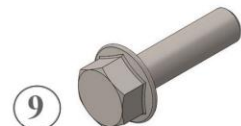
HARDWARE



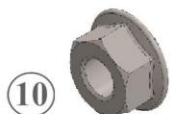
⑦
DIN 6921
FLANGE BOLT
M10X25
7 x QTY



⑧
DIN 6921
FLANGE BOLT
M8X25
14 x QTY



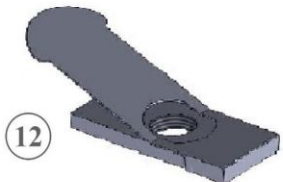
⑨
DIN 6921
FLANGE BOLT
M6X25
14 x QTY



⑩
DIN 6923
FLANGE NUT
M8X25
14 x QTY



⑪
DIN 6923
FLANGE NUT
M6X25
14 x QTY

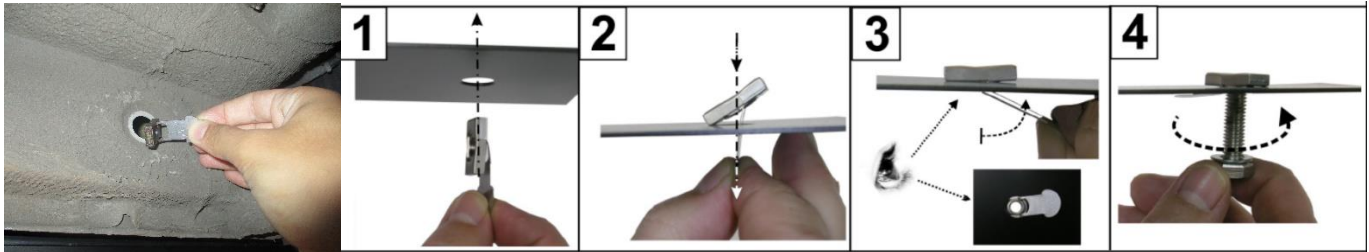


⑫
HTC 286
M10 (38X16X5)
7 x QTY

Installation Instructions 3027 Brackets “Professional Install recommended”

Important Install Tip: When installing Romik HTC inserts. Test by tugging on it before installing bracket. Blue loctite is highly recommended.

Make sure the HTC is seated correctly and do not use power tools as this will only spin the insert and possibly damage it.



Step 1: Locate front Driver's side brackets and hardware as per 1st page of this installation manual

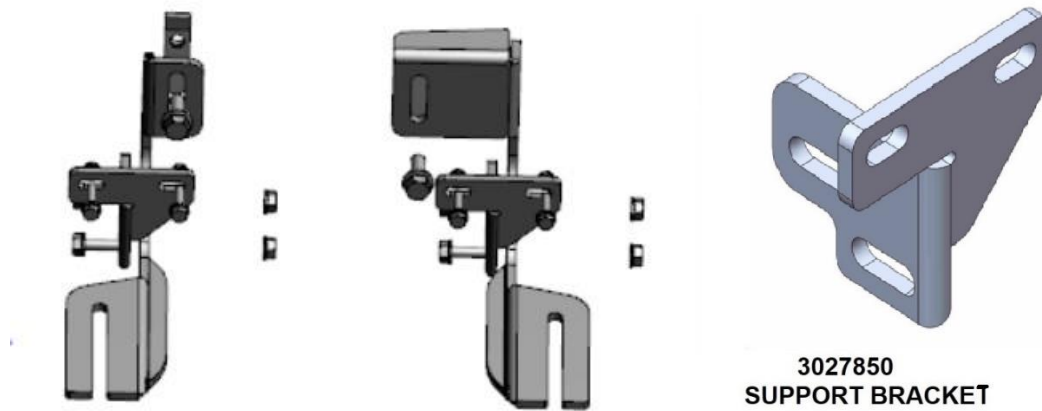
NOTE: There are several variants of the Sprinter model, If your vehicle is different than what we show contact Romik before starting this installation.

Step 2: Remove black rubber plugs that sit directly under the driver's footwell. Figure 1. Install provided HTC 286 as shown on above Figure 2. Proceed to install bracket #1 and bracket #2 do not tighten.

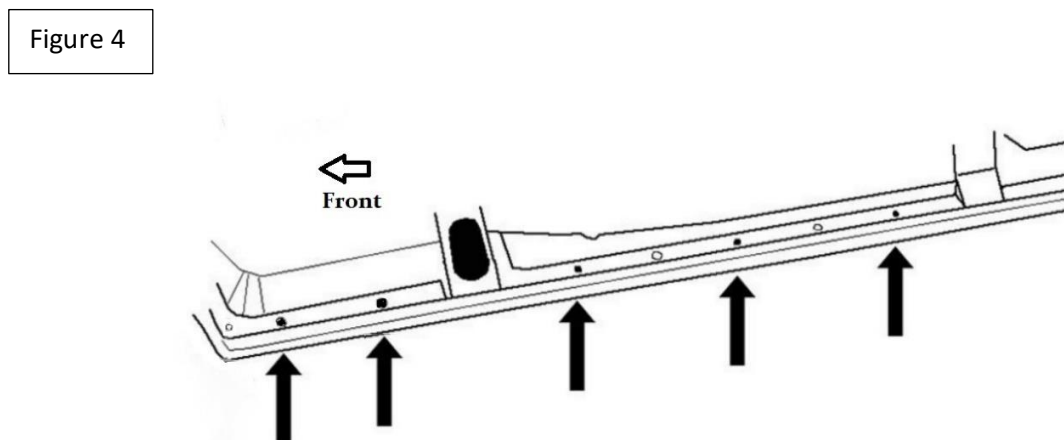


Installation Instructions 3027 Brackets “Professional Install recommended”

Step 3: Proceed to install extra support and mark “pinch weld” for drilling. Push the extra support as high as possible making sure that the flat area touches the body of the vehicle. Drill two holes using a 15/64 drill bit. Figure 3. complete the installation by installing the bracket with the supplied hardware.



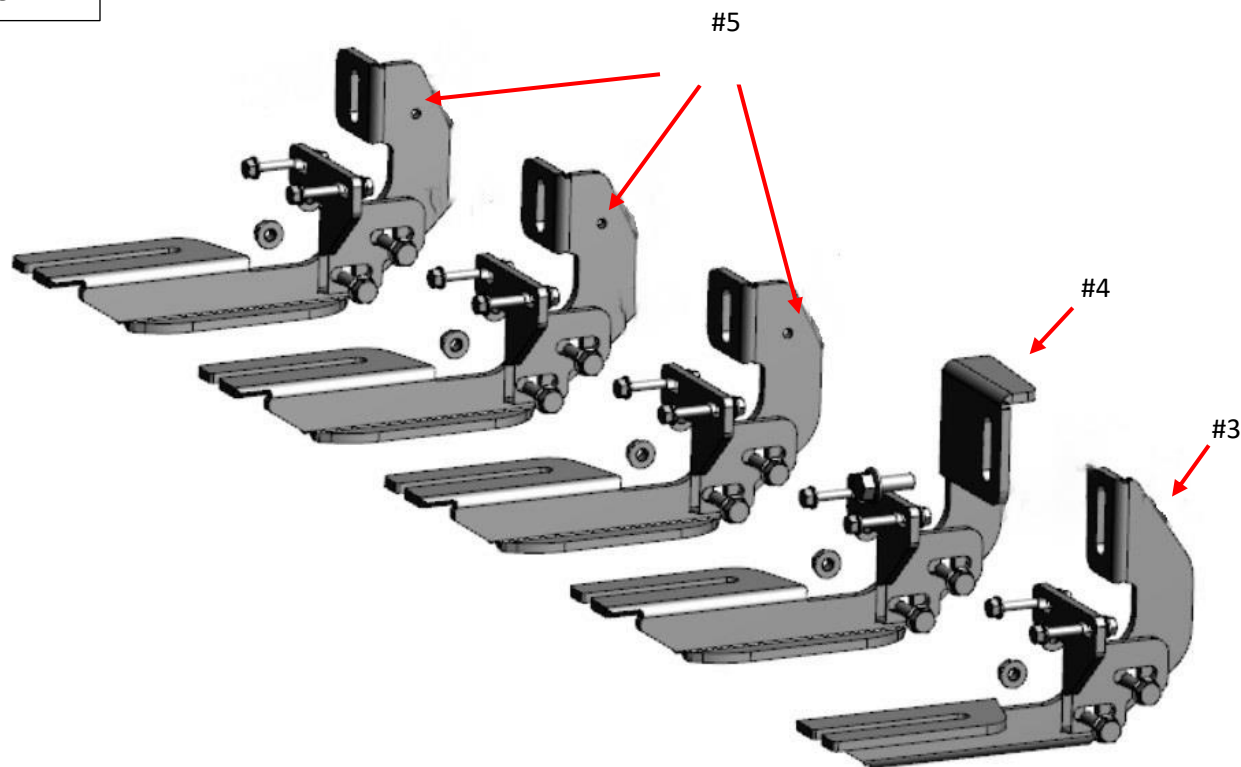
Step 4: Locate the passenger side mounting locations Figure 4. Please refer to the illustration below. Remove the rubber plugs. As indicated by the black arrows.



Installation Instructions 3027 Brackets “Professional Install recommended”

Step 5: Repeat steps 2 & 3, install all brackets in their locations. Bracket #3 & #4 are the passenger front and #5 are the sliding door. Note #5 has a small hole as marking. Figure 5 Do not tighten

Figure 5



Step 6: Once all the brackets are installed proceed and assemble the Romik “connect” running boards. Place the boards on the brackets and tighten them to our torque specs. NOTE: if necessary, use a level to make sure the running boards are properly installed.

Step 7: Review last page of this manual for running board install instructions and torque values

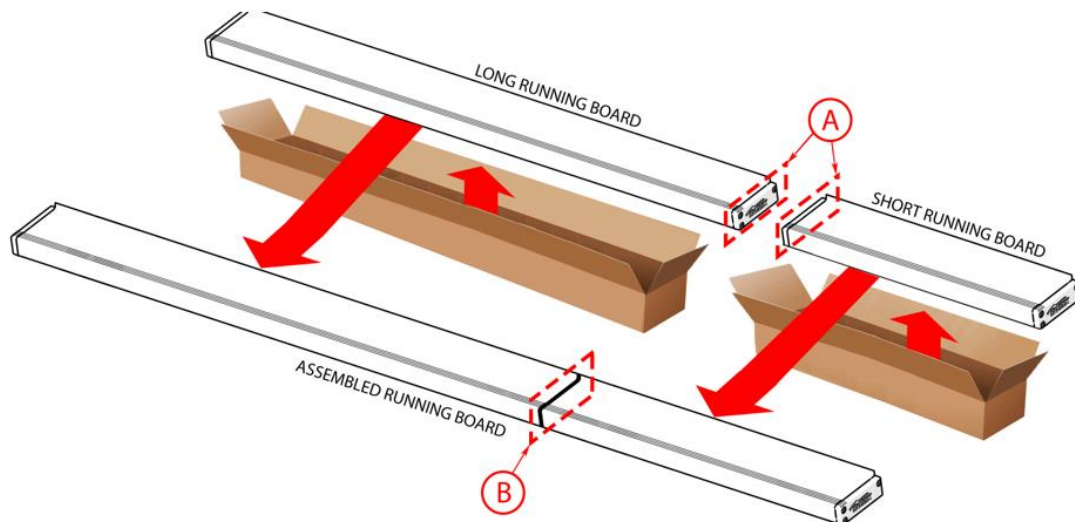
For Technical support please call our team at 1-866-717-6645 and one of our experts will assist you with this installation.

Thank you for choosing Romik.

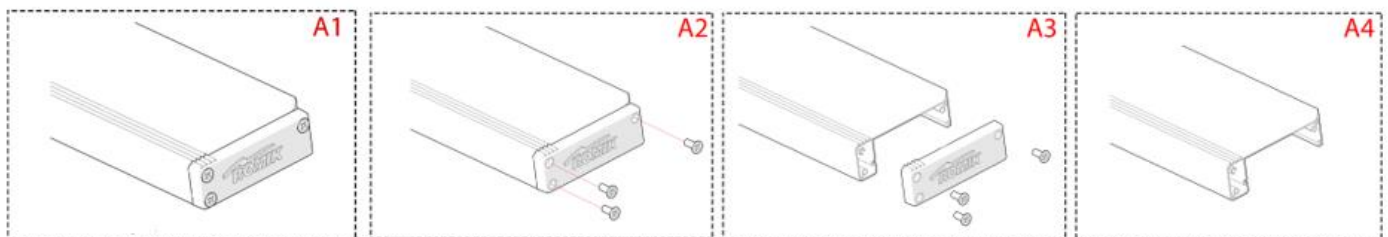
ROF / ROB / RPD 2 PC Romik Connect instructions

Please follow these steps to successfully “join” the 2 PC running boards together.

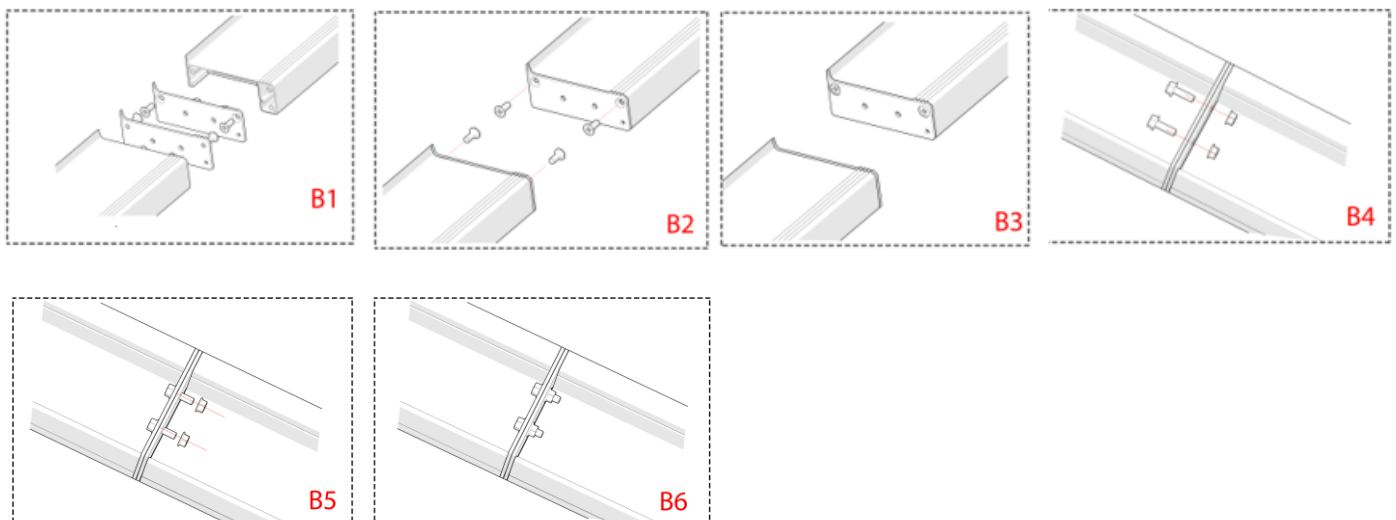
Step 1: Remove products from box and placed on a soft surface to avoid scratching.



Step 2: Remove plastic endcap as shown on Figure A1 – A4 keep screws as they will be re-used.



Step 3: Remove Romik Connect plate and assemble as show on Figure B1 – B3 using original screws. Join two running boards together using supplied M8 bolts torque to 7 ft lbs.



Step 4: Install running boards as per last page of this manual.

Running Board Installation Instructions

NOTE: Use of power tools will damage the bottom of the running board and void your warranty.



RAL / RB2 / REC / RCV / RZR



ROB / ROF / RPD

- 1) Flip your Romik running boards onto a flat surface, make sure to place the running boards on a towel or cardboard in order to protect the surface Figure 1.
- 2) Loosen the M8 bolts on back of your running boards Figure 2. Depending on your model there will be either 6 or 8 bolts installed per side.
- 3) Once your brackets have been installed, place the running board onto the brackets as shown on Figure 3.
- 4) Adjust running boards, centering on vehicle. Hand tight M8 hardware on running boards.
- 5) Follow the torque procedures, torque M8 hardware to **7 ft-lbs** using a torque wrench.
- 6) Cleaning and maintaining your running boards is important, apply a light coat of a quality carnauba wax at least 2X per year. Wash often with mild soap and make sure to remove all soap residue. Many car automatic carwashes use a strong soap, make sure to use enough water to remove all residue.
- 7) Register your products at <https://romik.com/productregistration>
- 8) Warranty information at www.Romik.com/warranty