



## Installation Instructions

Part No. **1434**

Product: Running Boards

Application: **Buick Enclave 2018 – 2024**

**Chevrolet Traverse 2018 – 2023**

Level of Difficulty: 1 2 **3** 4 5

Installation Time: 90 Min.

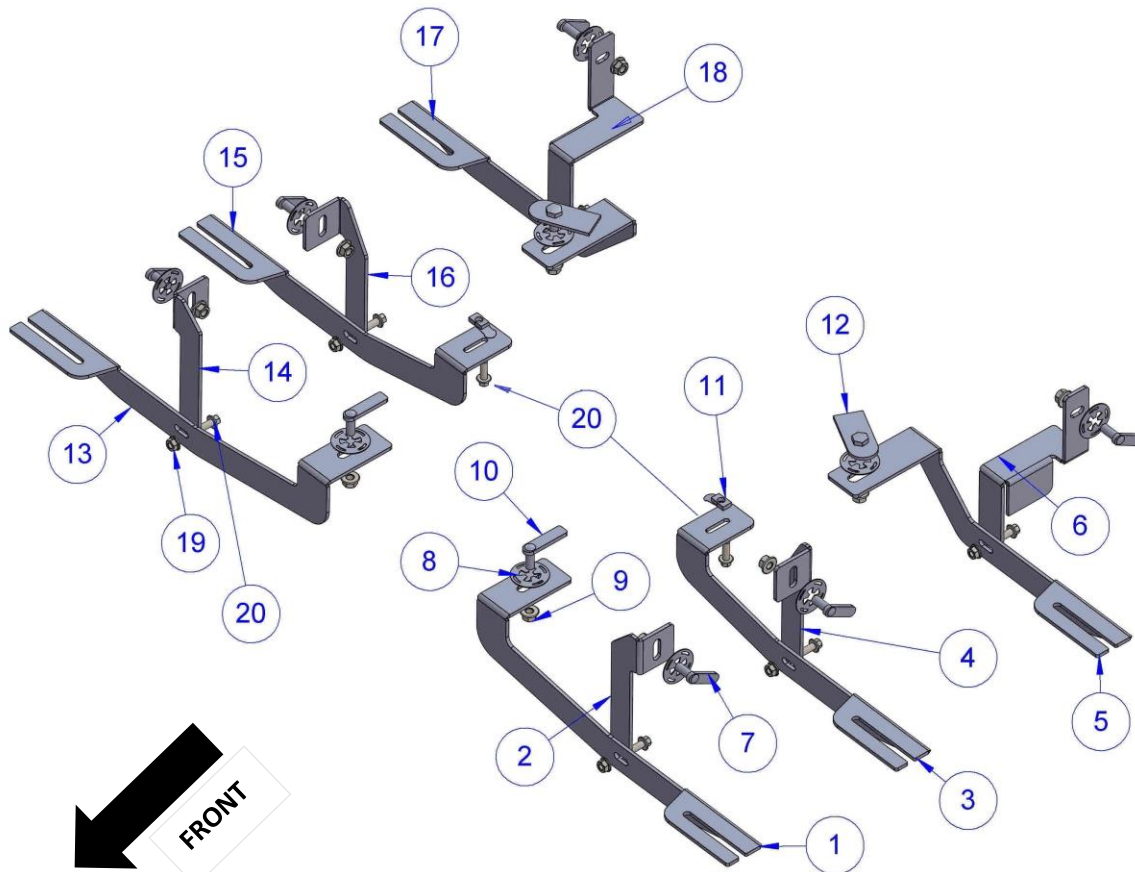
REV 4 09/15/24

Hardware	Torque Aluminum	Torque Steel to Steel
M6 Bolt	3 ft-lbs.	14 ft-lbs.
M8 Bolt	7 ft-lbs.	35 ft-lbs.
M10 Bolt	16 ft-lbs.	64 ft-lbs.
M12 Bolt	28 ft-lbs.	112 ft-lbs.

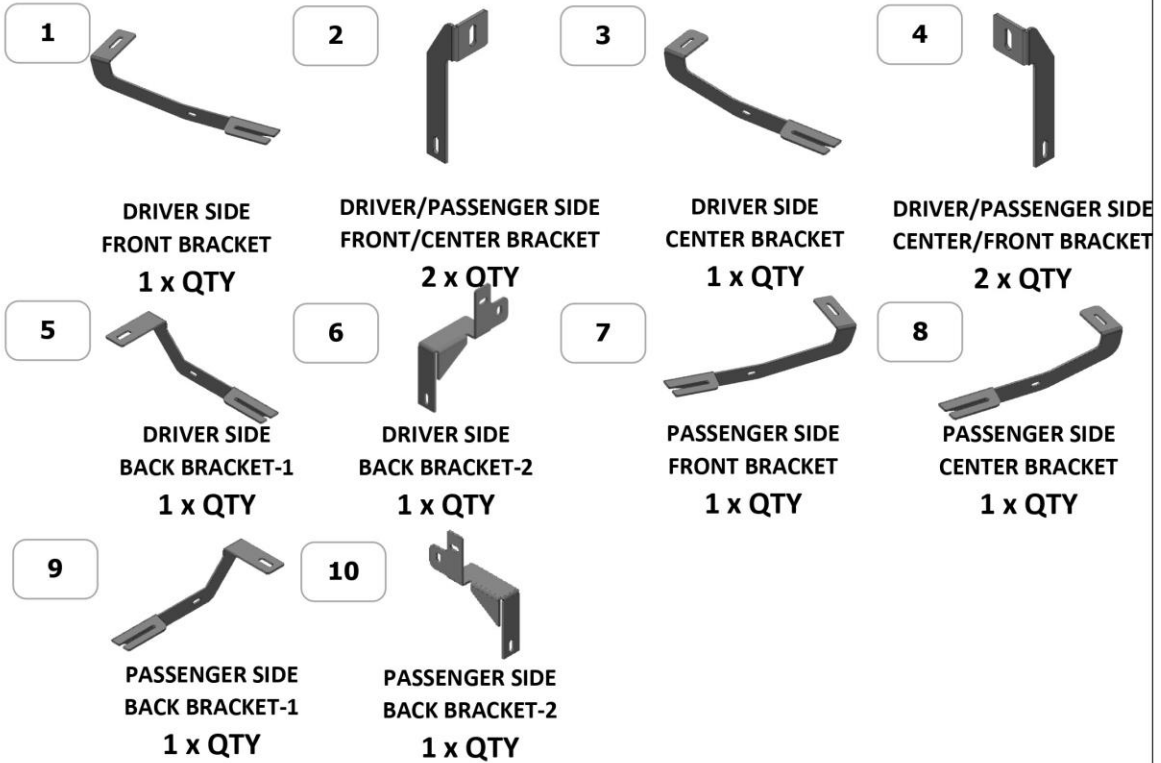
**ATTENTION:** Use correct torque settings to avoid damaging the running boards and or mounting brackets. Failure to do so will void your warranty. If you have any questions, please contact our technical team at 1-866-717-6645

Attention: Please make sure that you have the latest instructions  
from *Romik.com*

QR Scan



## 1434

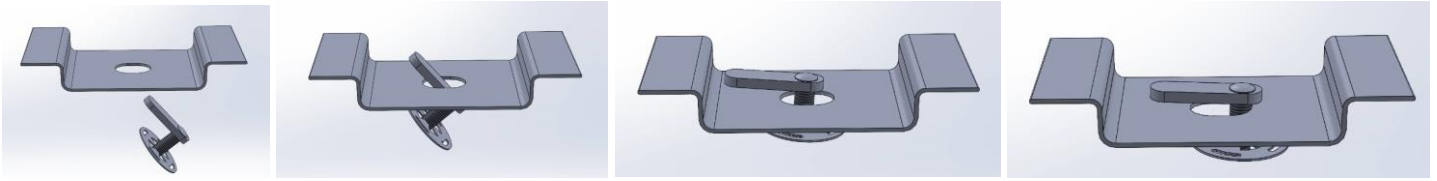


## HARDWARE



# Installation Instructions 1434 Bracket Kit

**Important Install Tip:** When installing Romik HTC inserts follow the sequence below. Make sure the HTC is seated correctly and do not use power tools as this will only spin the insert and possibly damage it. Test by tugging on it before installing bracket. Blue loctite is highly recommended on all metal parts.



**NOTE:** Due to the body design on this vehicle, there is a visible gap. Please review images on [www.Romik.com](http://www.Romik.com) before installing.

Pre-assemble brackets before starting the installation. Note Front bracket is longer than middle bracket



Front Driver side

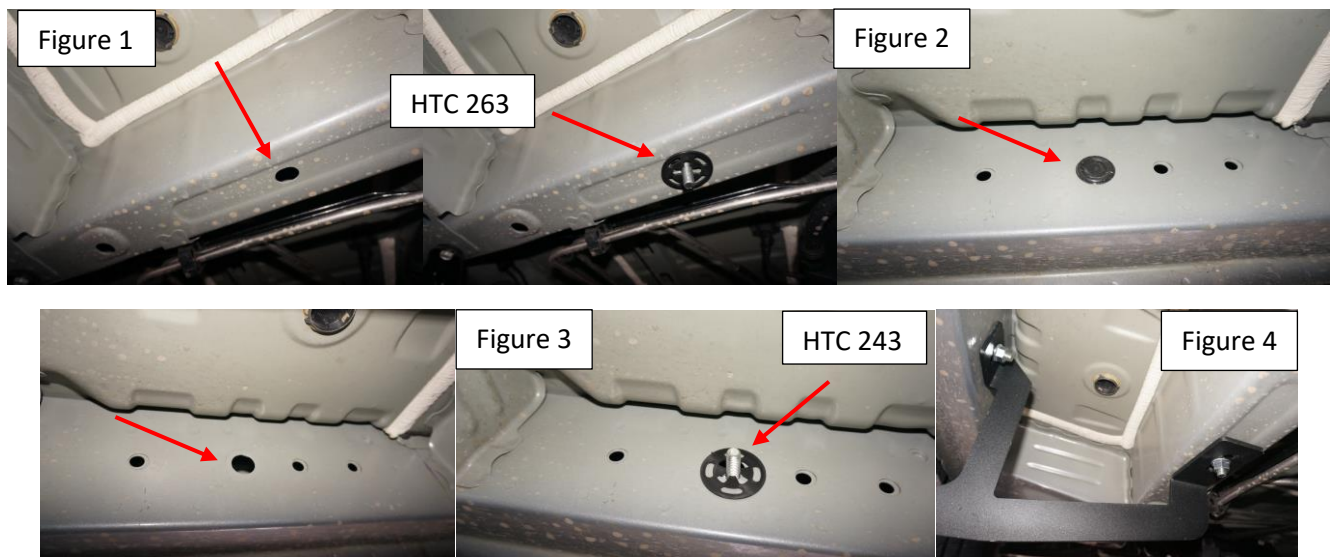
Middle Driver side

Rear Driver Side

**Step 1:** Locate front mounting locations and hardware as per 1<sup>st</sup> page of this installation manual

**Step 2:** Install provided HTC 263 as shown on Figure 1. Remove factory rubber plug as shown on Figure 2  
Install provided HTC 243 as shown Figure 3.

**Step 3:** Install front bracket Figure 4. Do not tighten



# Installation Instructions 1434 Bracket Kit



Image shows pass front bracket installed

**Step 4:** Locate middle bracket position, Install provided HTC 311 as shown Figure 5, Remove factory rubber plug as shown Figure 6. Install provided HTC 243 Figure 7.

**Step 5:** Install middle bracket Figure 8. Do not tighten

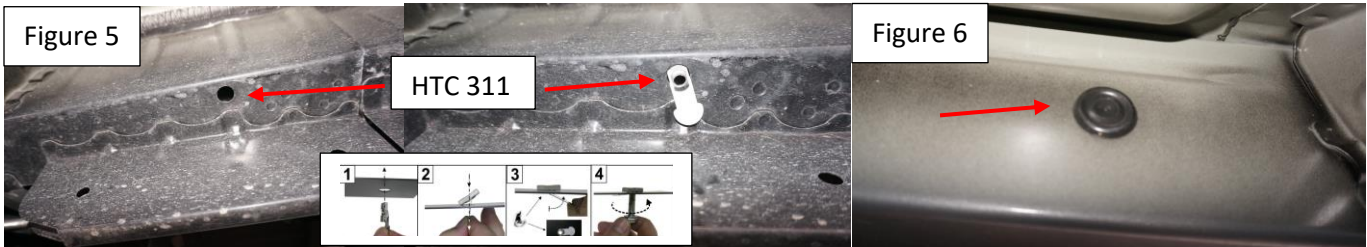


Image shows pass middle bracket installed



# Installation Instructions 1434 Bracket Kit

**Step 6:** Locate rear bracket position Figure 8, Install provided HTC 284. Remove factory rubber plug Figure 9 and install provided HTC 243 Figure 10.

**Step 7:** Install rear bracket as show Figure 11 and 12 Do not tighten

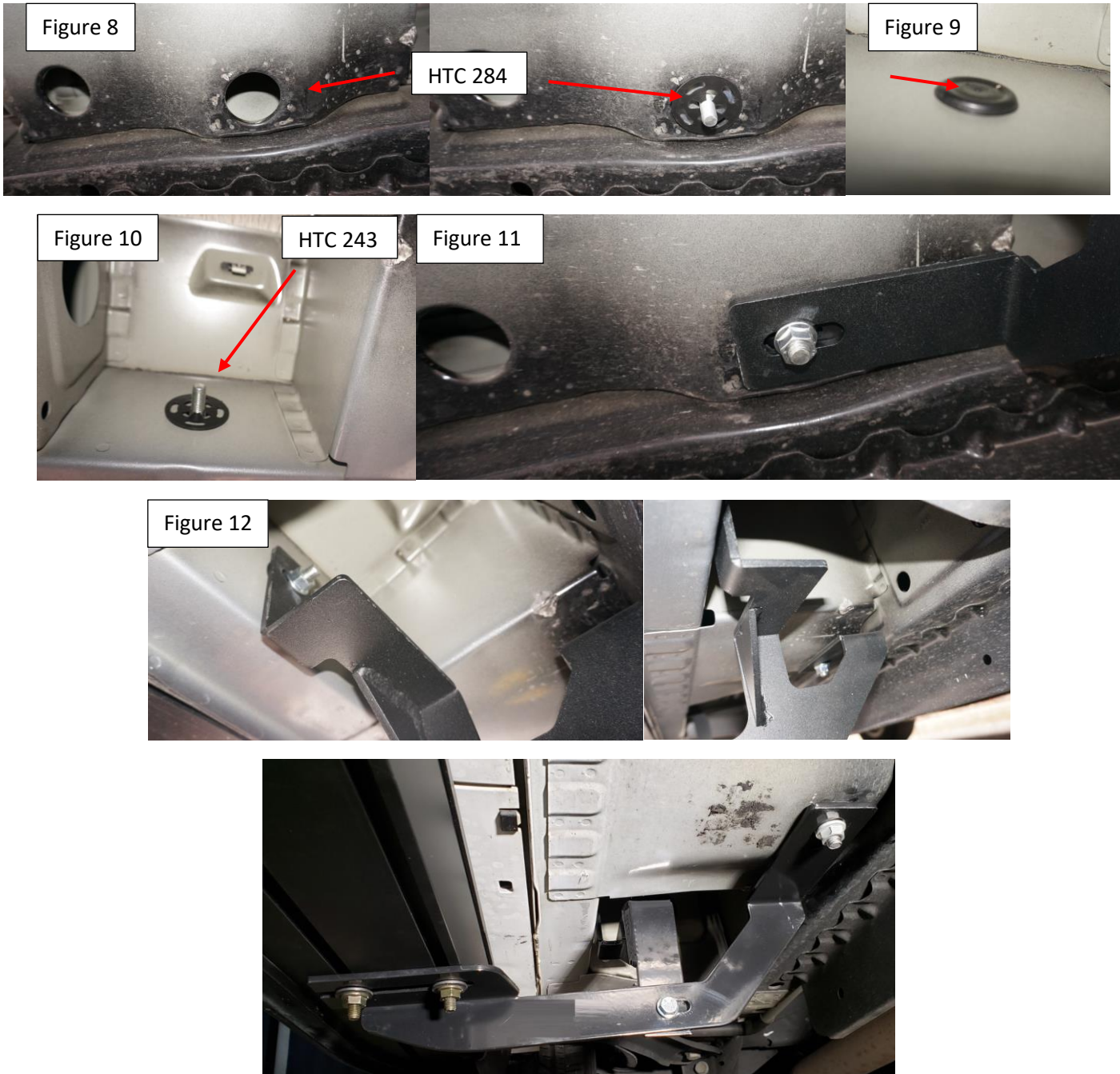


Image shows pass rear bracket installed

**Step 8:** Proceed to last page of this manual for running board install instructions and torque values  
For Technical support please call our team at 1-866-717-6645 and one of our experts will assist you with this installation.

***Thank you for choosing Romik.***

# Installation Instructions Running Boards

**NOTE: Use of power tools will damage the bottom of the running board and void your warranty.**

**Step 1: loosen the M8 hardware on back of the running boards.**

**Step 2: Slide running board onto brackets**

**Step 3: Tighten hardware to 7 ft lbs.**



## ROF/RPD/ROB Running boards

**Step 1: Place clamping plate on top of running board as shown below. Make sure clamping plate sits correctly on running board surface.**

**Step 2: Install carriage bolts and plastic retaining clips as shown below.**

**Step 3: Install and tighten hardware to 7 ft lbs.**



## Product Registration and Warranty Information

- Register your Romik products at <https://romik.com/productregistration>
- Warranty information at <http://www.romik.com/warranty>

## Cleaning and maintaining your Romik Running boards

Cleaning and maintaining your running boards is important, apply a light coat of a quality carnauba wax at least 2X per year. Wash often with mild soap and make sure to remove all soap residue. Many car automatic carwashes use a strong soap, make sure to use enough water to remove all residue.

For video instructions on how to clean your Romik products please click here <https://romik.com/cleaning>