



Installation Instructions

REV 3 04/15/20

Part No. 2135 / 6210

Product: Running Boards

Application:

Ford Escape 2013-2019

Lincoln MKC 2015+

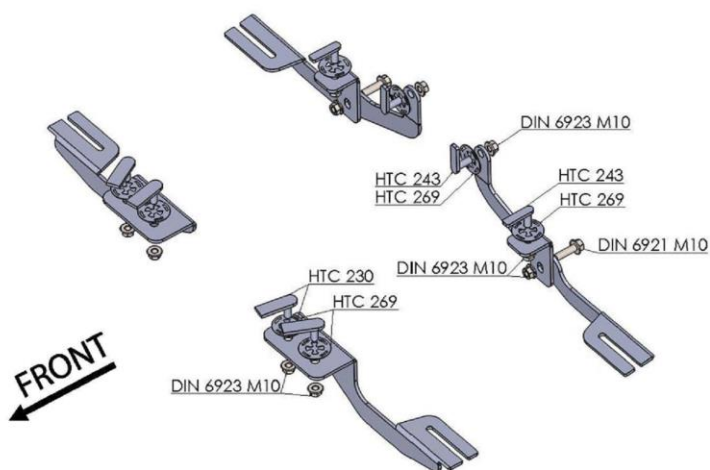
Level of Difficulty: 1 2 3 4 5

Installation Time: 60 min

Hardware	Torque Specifications
M6 Bolt	3 ft-lbs.
M8 Bolt	7 ft-lbs.
M10 Bolt	16 ft-lbs.
M12 Bolt	28 ft-lbs.

ATTENTION: Use correct torque settings to avoid damaging the running boards and or mounting brackets. Failure to do so will void your warranty.

If you have any questions please contact our technical team at 1-866-717-6645



HARDWARE

4		HTC 230 - (M10x25) (4x20x60)	8		HTC 269 CLIPS (M10)	10		DIN 6923 FLANGE NUT (M10)
4		HTC 243 - M10x25 (5x13x50)	2		DIN 6921 BOLT (M10)			

BRACKETS



(x2)



(x2)



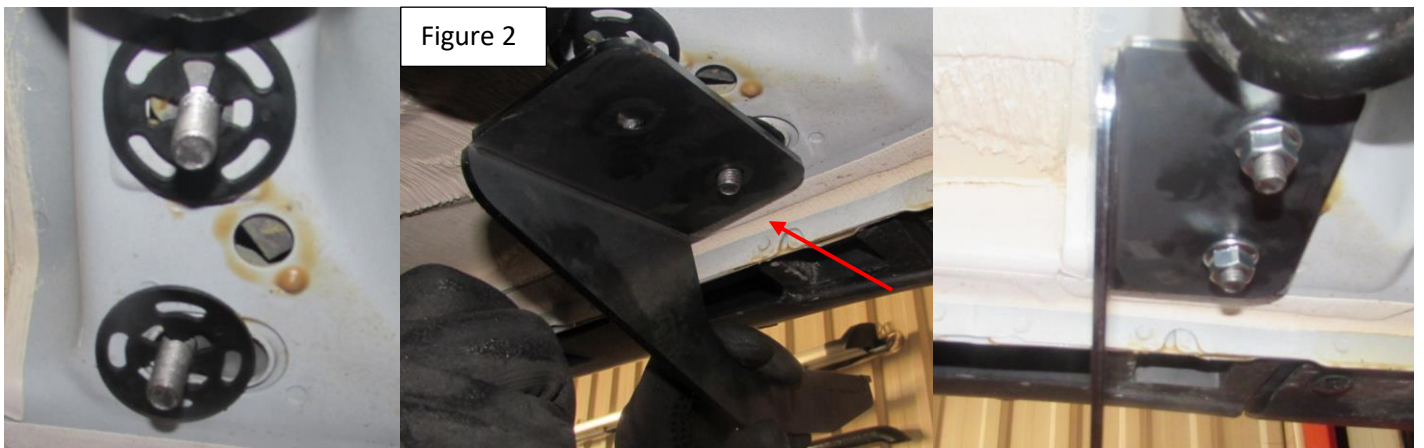
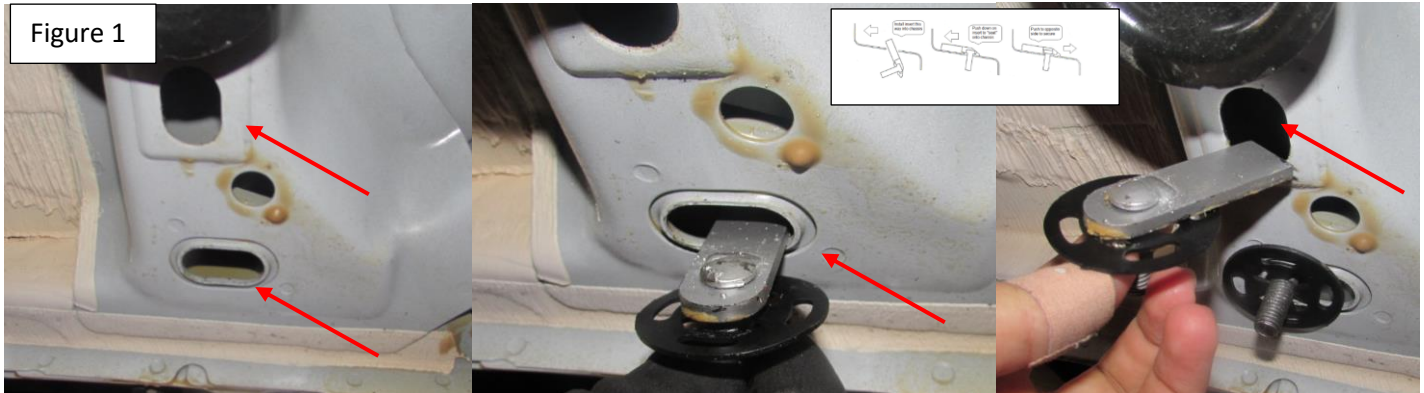
(x2)

Installation Instructions 2135 / 6210 Bracket Kit

Video
Installation
Instruction:

Step 1: Locate front mounting locations and hardware as per 1st page of this installation manual

Step 2: Install provided HTC 230 on both front locations Figure 1. Proceed to install front bracket as shown on Figure 2. Do not tighten

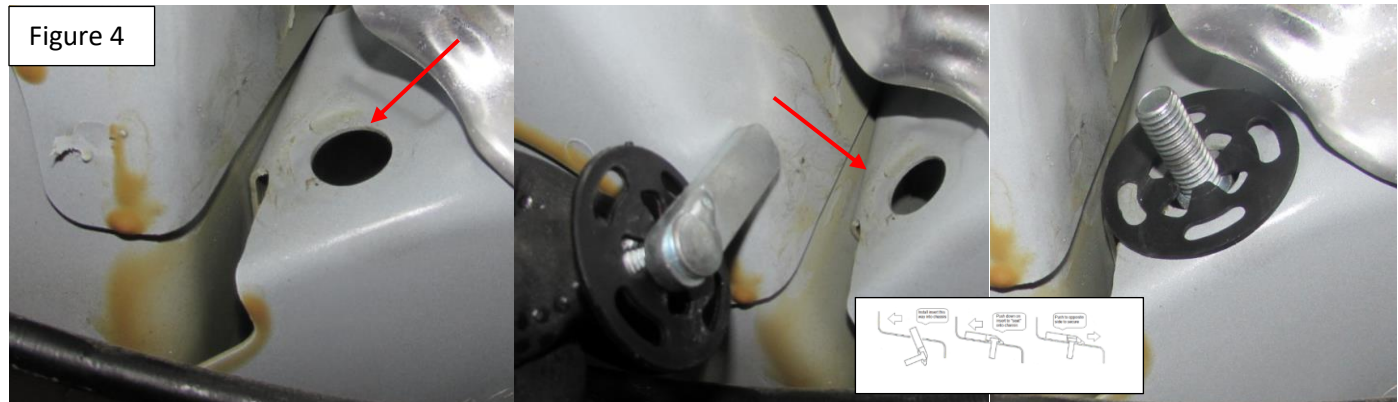


Step 3: Locate rear bracket mounting area, install provided HTC 243 as shown Figure 3. This is where the extra support will mount.

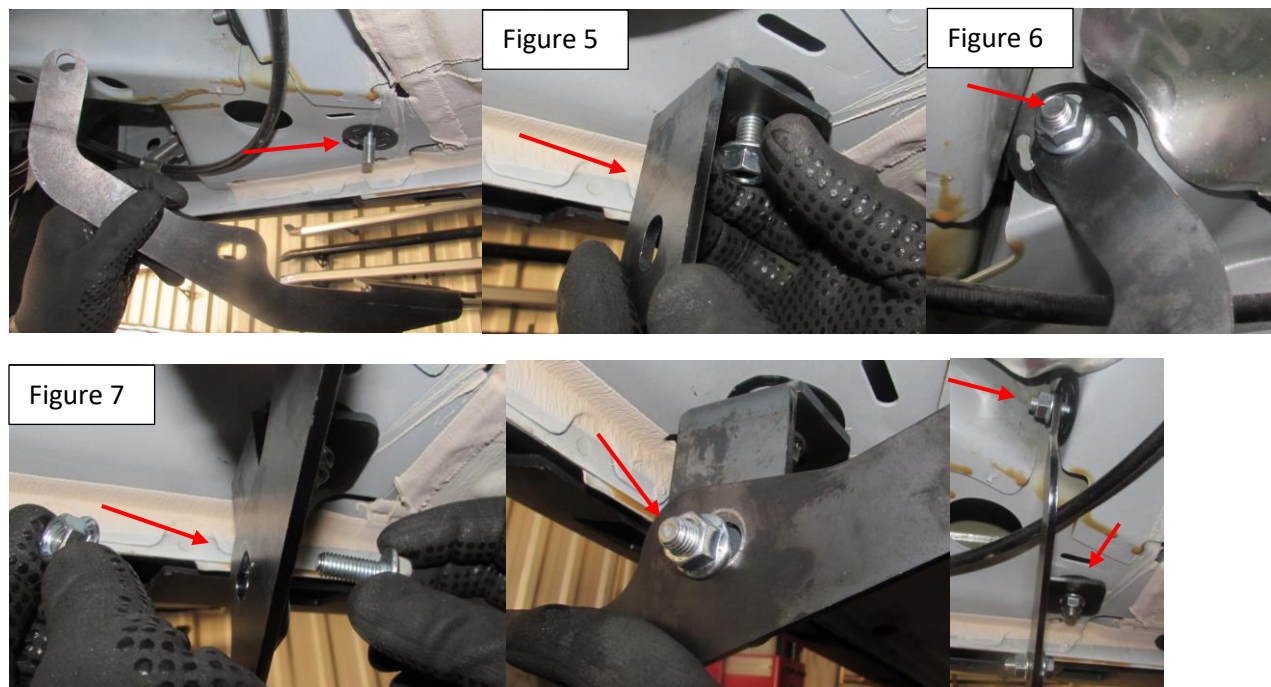


Installation Instructions 2135 / 6210 Bracket Kit

Step 4: Locate main rear bracket mounting area, install provided HTC 243 as show Figure 4.



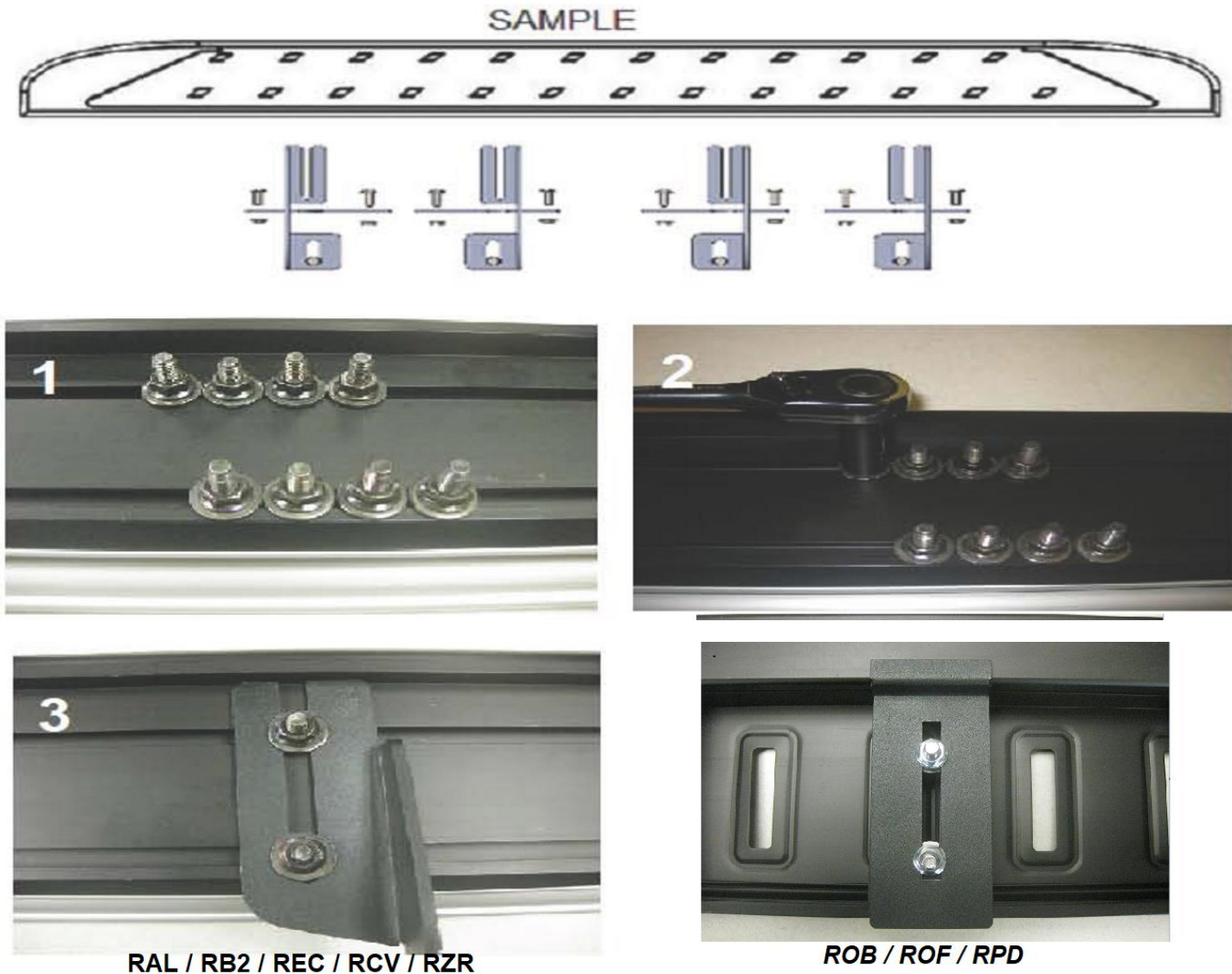
Step 5: Install extra support as shown on Figure 5. Attach main rear bracket as shown on Figure 6. Connect extra support to main rear bracket using supplied M10 hardware as shown on Figure 7. Do not tighten



Step 6: Proceed to last page of this manual for running board install instructions and torque values
For Technical support please call our team at 1-866-717-6645 and one of our experts will assist you with this installation.

Thank you for choosing Romik.

Running Board Installation Instructions



- 1) Flip your Romik running boards onto a flat surface, make sure to place the running boards on a towel or cardboard in order to protect the surface Figure 1.
- 2) Loosen the M8 bolts on back of your running boards Figure 2. Depending on your model there will be either 6 or 8 bolts installed per side.
- 3) Once your brackets have been installed, place the running board onto the brackets as shown on Figure 3.
- 4) Adjust running boards, centering on vehicle. Hand tight M8 hardware on running boards.
- 5) Follow the torque procedures, torque M8 hardware to **7 ft-lbs** using a torque wrench.
- 6) Cleaning and maintaining your running boards is important, apply a light coat of a quality carnauba wax at least 2X per year. Wash often with mild soap and make sure to remove all soap Residue. Many car automatic carwashes use a strong soap, make sure to use enough water to remove all residue.
- 7) Register your products at www.Romik.com/contact/productregistration
- 8) Warranty information at www.Romik.com/warranty