



Installation Instructions

Part No. **1433**

Product: Running Boards

Application: **Chevy Equinox 2018 – Present**

GMC Terrain 2018 – Present

Level of Difficulty: 1 2 **3** 4 5

Installation Time: 90 Min.

REV 2 03/01/23

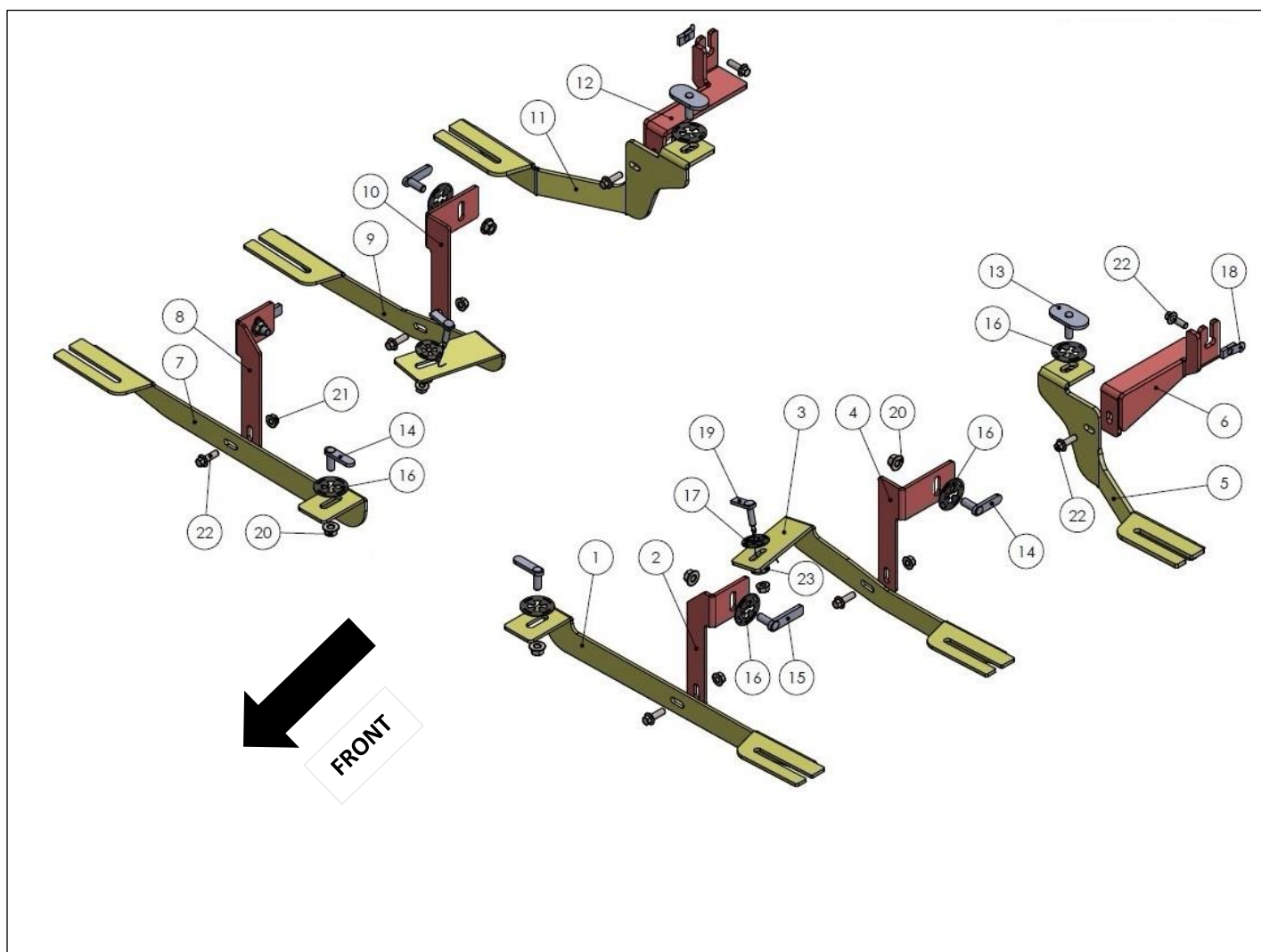
Hardware	Torque Aluminum	Torque Steel to Steel
M6 Bolt	3 ft-lbs.	14 ft-lbs.
M8 Bolt	7 ft-lbs.	35 ft-lbs.
M10 Bolt	16 ft-lbs.	64 ft-lbs.
M12 Bolt	28 ft-lbs.	112 ft-lbs.

ATTENTION: Use correct torque settings to avoid damaging the running boards and or mounting brackets. Failure to do so will void your warranty. If you have any questions, please contact our technical team at 1-866-717-6645



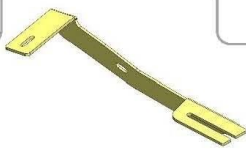
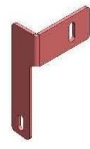
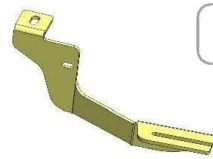
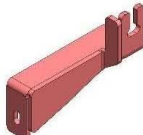
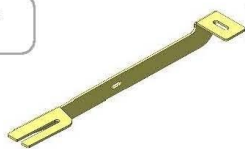

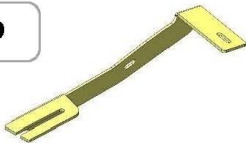
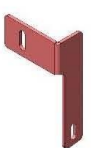
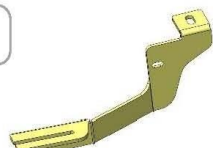
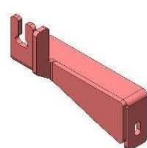
Attention: Please make sure that you have the latest instructions

from www.Romik.com

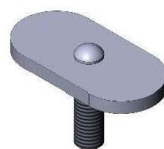

QR Scan



1433_v2

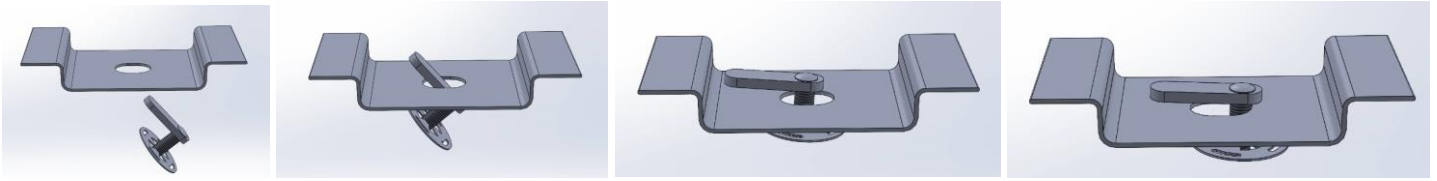
1		2		3		4	
	DRIVER SIDE FRONT BRACKET-1 1 x QTY		DRIVER SIDE FRONT BRACKET-2 1 x QTY		DRIVER SIDE CENTER BRACKET-1 1 x QTY		DRIVER SIDE CENTER BRACKET-2 1 x QTY
5		6		7		8	
	DRIVER SIDE REAR BRACKET-1 1 x QTY		DRIVER SIDE REAR BRACKET-2 1 x QTY		PASSENGER SIDE FRONT BRACKET-1 1 x QTY		PASSENGER SIDE FRONT BRACKET-2 1 x QTY
9		10		11		12	
	PASSENGER SIDE CENTER BRACKET-1 1 x QTY		PASSENGER SIDE CENTER BRACKET-2 1 x QTY		PASSENGER SIDE REAR BRACKET-1 1 x QTY		PASSENGER SIDE REAR BRACKET-2 1 x QTY

HARDWARE

13		14		15		16	
	HTC 240 – M10x30 (5x34x60) 2x		HTC 243 – M10x25 (4x12x50) 4x		HTC 262 – M10x30 (5x15x60) 2x		HTC 269 M10 CLIPS 8x
17		18		19		20	
	HTC 271 M8 CLIPS 2x		HTC 311 – M8 (21.3x11.75) 2x		HTC 314 2x		M10 – HEX FLANGE NUT 8x
21		22		23			
	M8 – HEX FLANGE NUT 8x		M8x25 – HEX FLANGE BOLT 10 x		M8 – WASHER 2x		

Installation Instructions 1433-V2 Bracket Kit

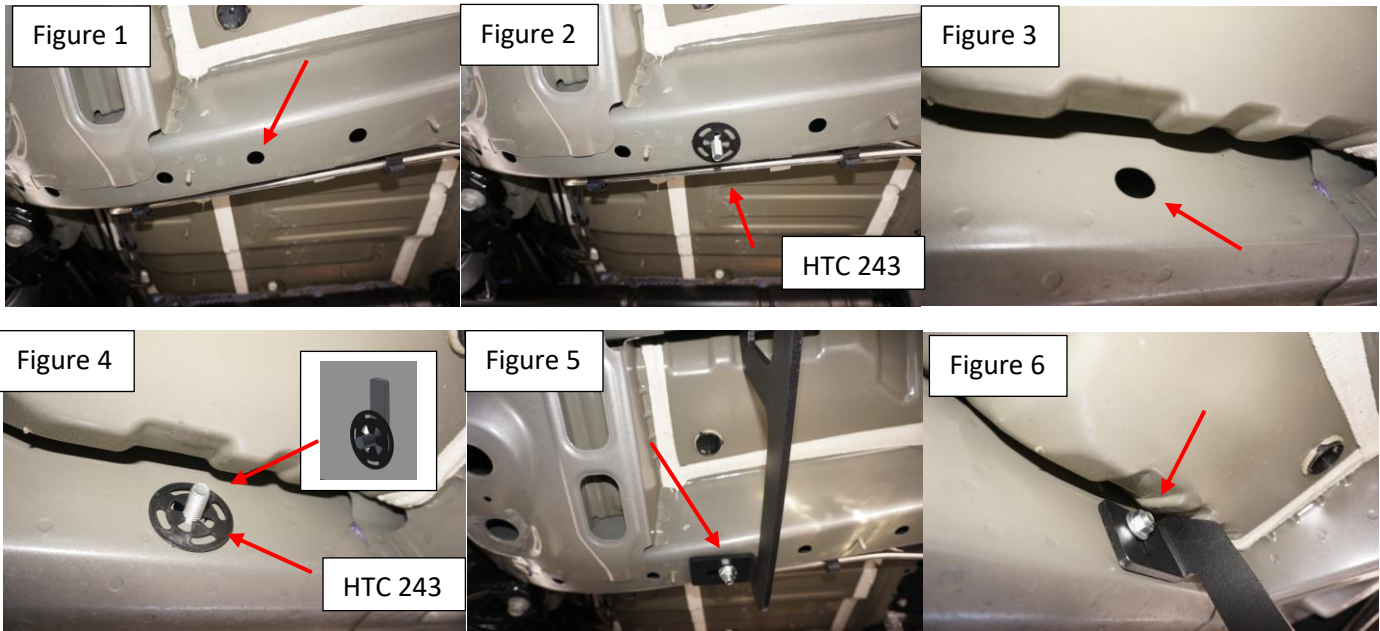
Important Install Tip: When installing Romik HTC inserts follow the sequence below. Make sure the HTC is seated correctly and do not use power tools as this will only spin the insert and possibly damage it. Test by tugging on it before installing bracket. Blue loctite is highly recommended on all metal parts.



Step 1: Before starting review hardware as per 1st page of this installation manual. Assemble brackets together before starting. Front bracket (left), middle bracket and rear bracket (right). Driver's side shown.

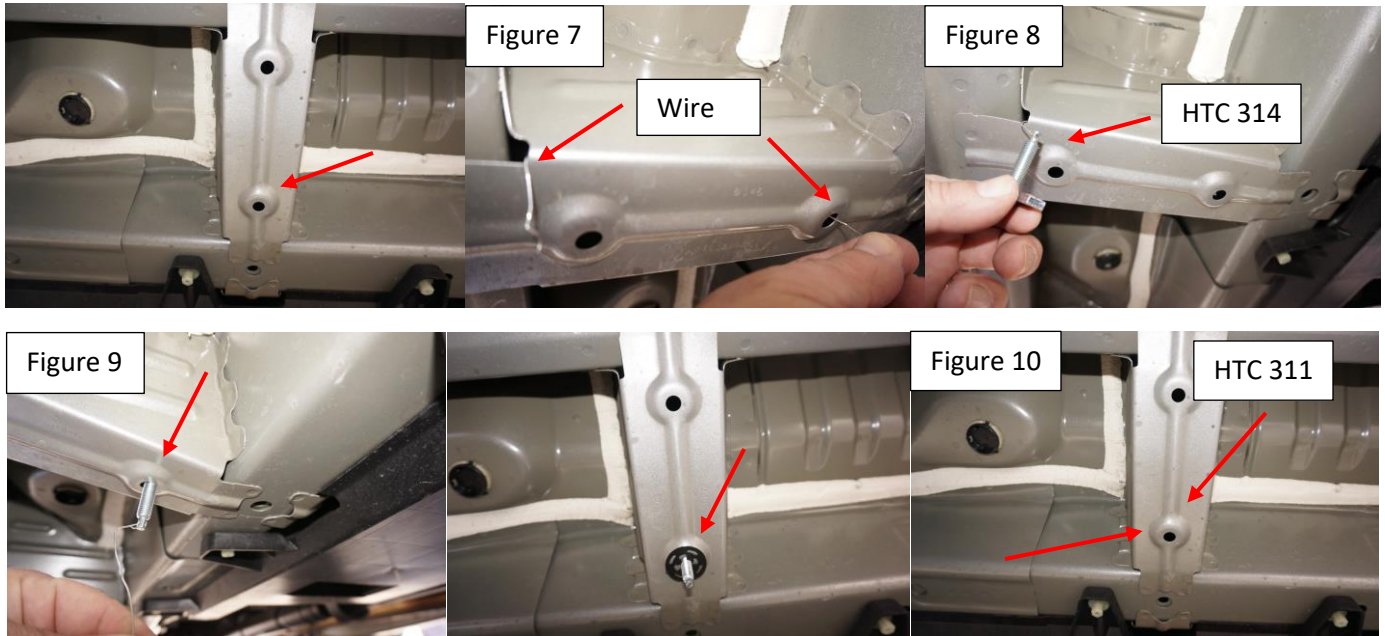
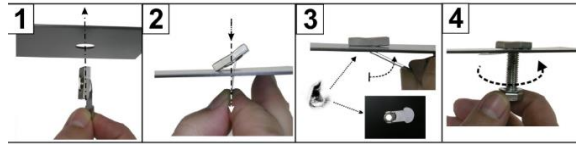


Step 2: Install HTC 243 as show on Figure 1 and 2. Remove factory rubber plug Figure 3. Install HTC 243 as shown figure 4. Note make sure HTC is position at 12 o'clock. Install assembled front bracket as shown on Figure 5 and 6. Do not tighten



Installation Instructions 1433-V2 Bracket Kit

Step 3: Option 1 NO Drill Pass through supplied wire on inner hole Figure 7. Attach HTC 314 plate and bolt to wire Figure 8. Gently pull wire and pass bolt through hole Figure 9. **Option 2 Drilling** Enlarge factory hole using ½ drill bit. Install provided HTC 311 as shown Figure 10

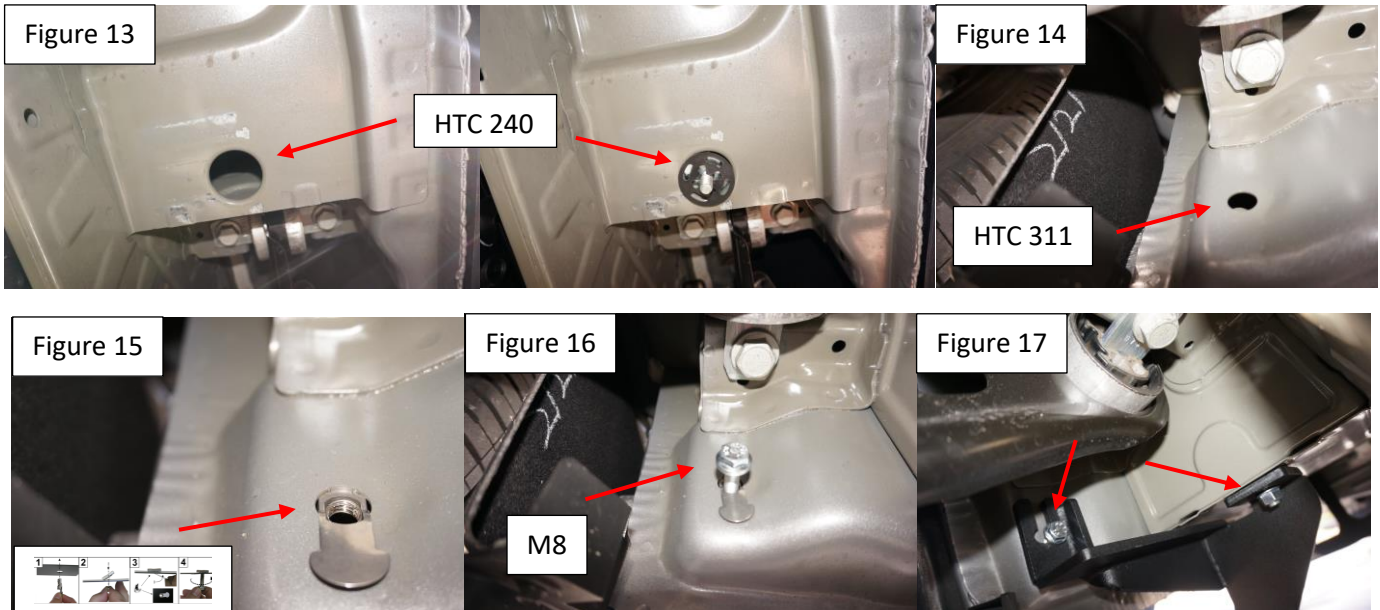


Step 4: Install HTC 243 as shown Figure 11. Make sure HTC is positioned at 12 O'clock. Install middle bracket as shown image 12. If you chose option 2 use supplied M8 bolt on inner portion. Do not tighten



Installation Instructions 1433-V2 Bracket Kit

Step 5: install HTC 240 as shown Figure 13, Install HTC 311 as show on Figure 14 and 15. Install M8 bolt as shown Figure 16. Install rear bracket as shown Figure 17. Do not tighten



Step 6: Repeat procedure on opposite side.

Step 7: Proceed to last page of this manual for running board install instructions and torque values

For Technical support please call our team at 1-866-717-6645 and one of our experts will assist you with this installation.

Thank you for choosing Romik.

Installation Instructions Running Boards

NOTE: Use of power tools will damage the bottom of the running board and void your warranty.

Step 1: loosen the M8 hardware on back of the running boards.

Step 2: Slide running board onto brackets

Step 3: Tighten hardware to 7 ft lbs.



ROF/RPD/ROB Running boards

Step 1: Place clamping plate on top of running board as shown below. Make sure clamping plate sits correctly on running board surface.

Step 2: Install carriage bolts and plastic retaining clips as shown below.

Step 3: Install and tighten hardware to 7 ft lbs.



Product Registration and Warranty Information

- Register your Romik products at <https://romik.com/productregistration>
- Warranty information at <http://www.romik.com/warranty>

Cleaning and maintaining your Romik Running boards

Cleaning and maintaining your running boards is important, apply a light coat of a quality carnauba wax at least 2X per year. Wash often with mild soap and make sure to remove all soap residue. Many car automatic carwashes use a strong soap, make sure to use enough water to remove all residue.

For video instructions on how to clean your Romik products please click here <https://romik.com/cleaning>