



# Installation Instructions

Part No. **4115**

Product: Running Boards

Application: **Volvo XC90 2015 – Present**

Level of Difficulty: 1 2 3 4 5

**Professional Installation Time: 90 Min.**

**DIY Installation Time: 180 Min**

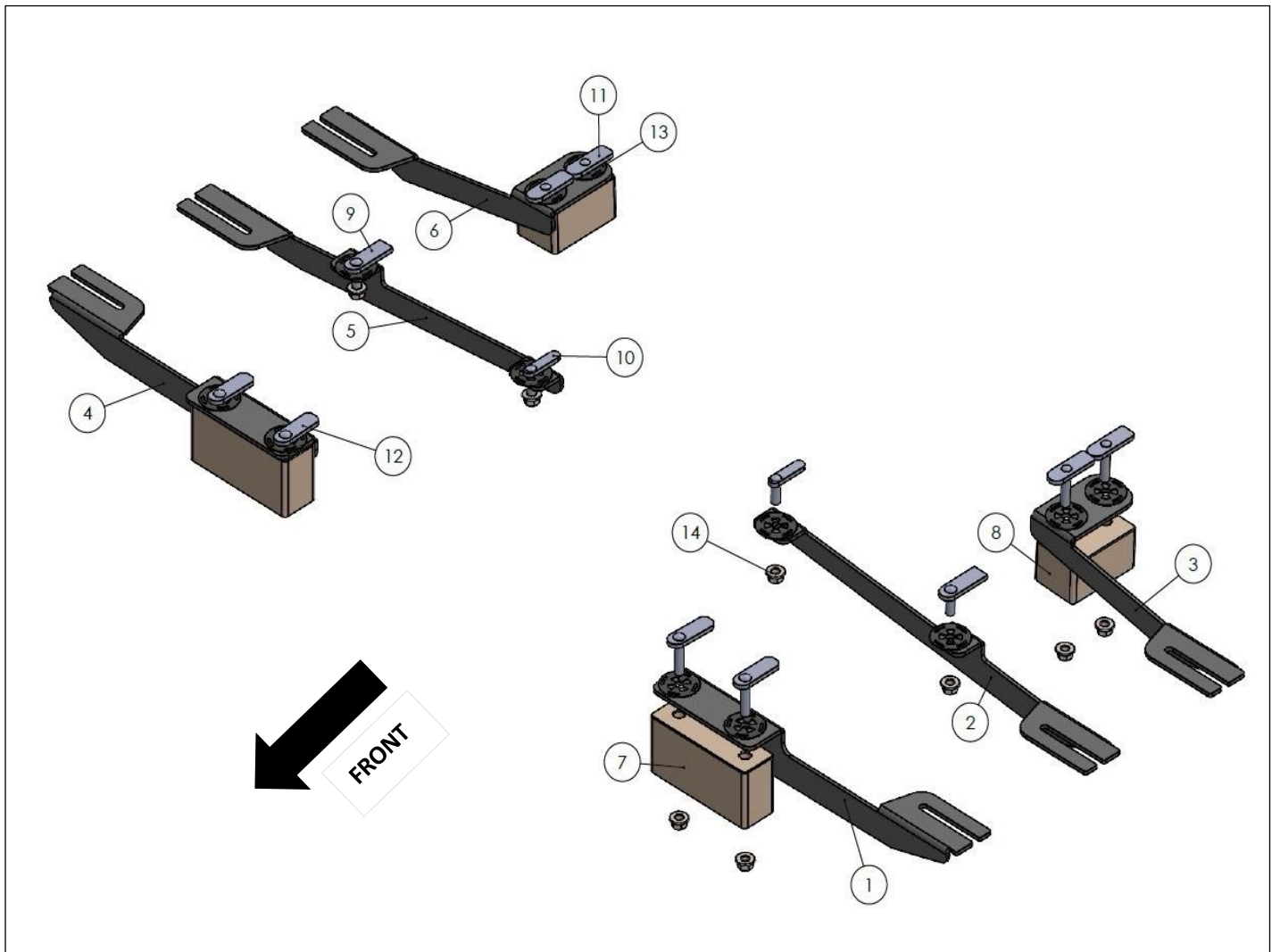
REV 3 01/15/26

Hardware	Torque Aluminum	Torque Steel to Steel
M6 Bolt	3 ft-lbs.	14 ft-lbs.
M8 Bolt	7 ft-lbs.	35 ft-lbs.
M10 Bolt	16 ft-lbs.	64 ft-lbs.
M12 Bolt	28 ft-lbs.	112 ft-lbs.

*ATTENTION: Use correct torque settings to avoid damaging the running boards and or mounting brackets. Failure to do so will void your warranty. If you have any questions, please contact our technical team at 1-866-717-6645*

Attention: Please make sure that you have the latest instructions from **Romik.com**

QR Scan



# 4115

1



DRIVER SIDE  
FRONT BRACKET-1  
1 x QTY

2



DRIVER SIDE  
CENTER BRACKET-1  
1 x QTY

3



DRIVER SIDE  
REAR BRACKET-1  
1 x QTY

4



PASSENGER SIDE  
FRONT BRACKET-1  
1 x QTY

5



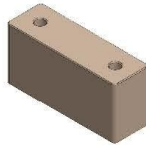
PASSENGER SIDE  
CENTER BRACKET-1  
1 x QTY

6



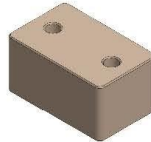
PASSENGER SIDE  
REAR BRACKET-1  
1 x QTY

7



D-1  
Front jack block  
2 x QTY

8



D\_2  
Rear jack block  
2 x QTY

## HARDWARE

9



HTC 230 – M10x25  
(5x20x60)  
2x

10



HTC 243 – M10x25  
(4x12x50)  
2x

11



HTC 328 – M10x40  
(5x20x60)  
4x

12



HTC 329 – M10x40  
(5x20x60)  
4x

13



HTC 269  
M10 CLIPS  
12x

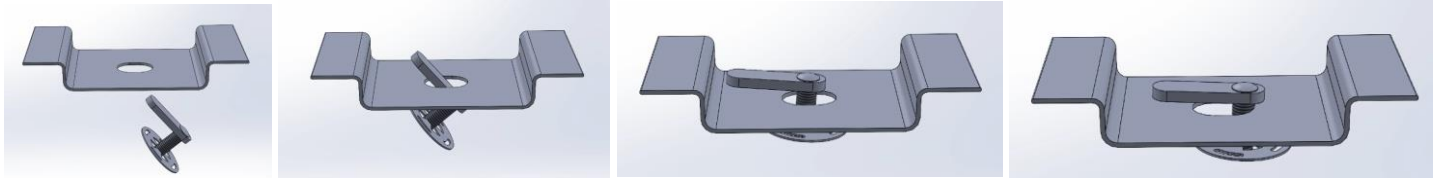
14



M10 – HEX  
FLANGE NUT  
12x

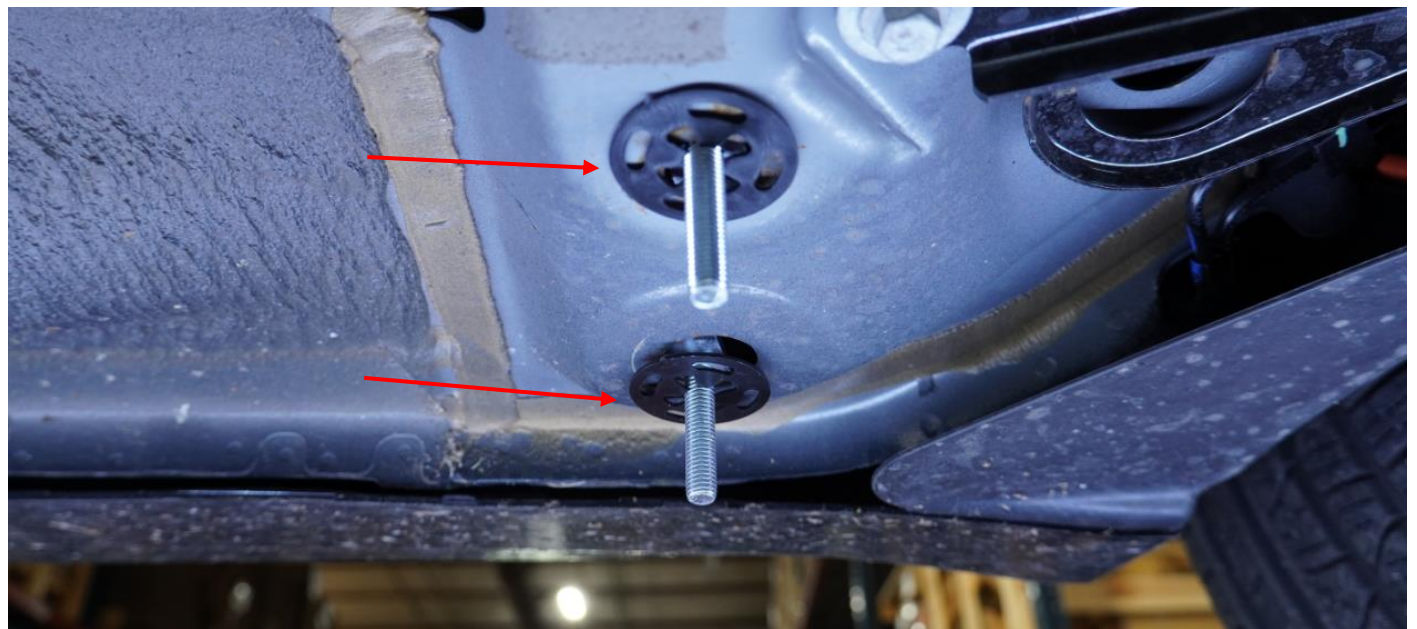
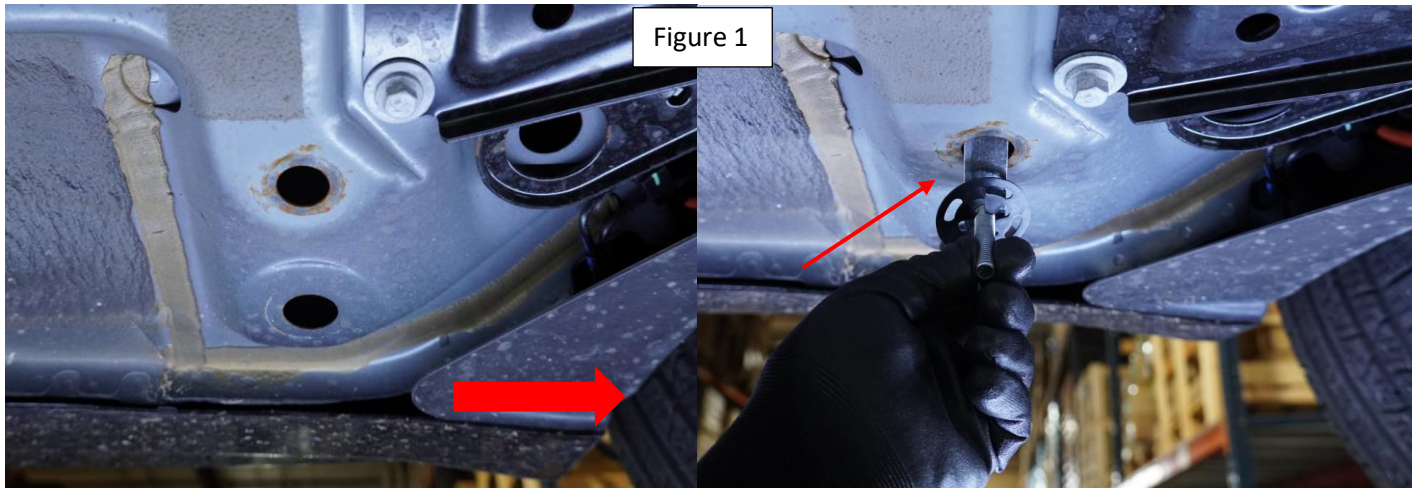
# Installation Instructions 4115 Bracket Kit

**Important Install Tip:** When installing Romik HTC inserts follow the sequence below. Make sure the HTC is seated correctly and do not use power tools as this will only spin the insert and possibly damage it. Test by tugging on it before installing bracket. Blue loctite is highly recommended on all metal parts.



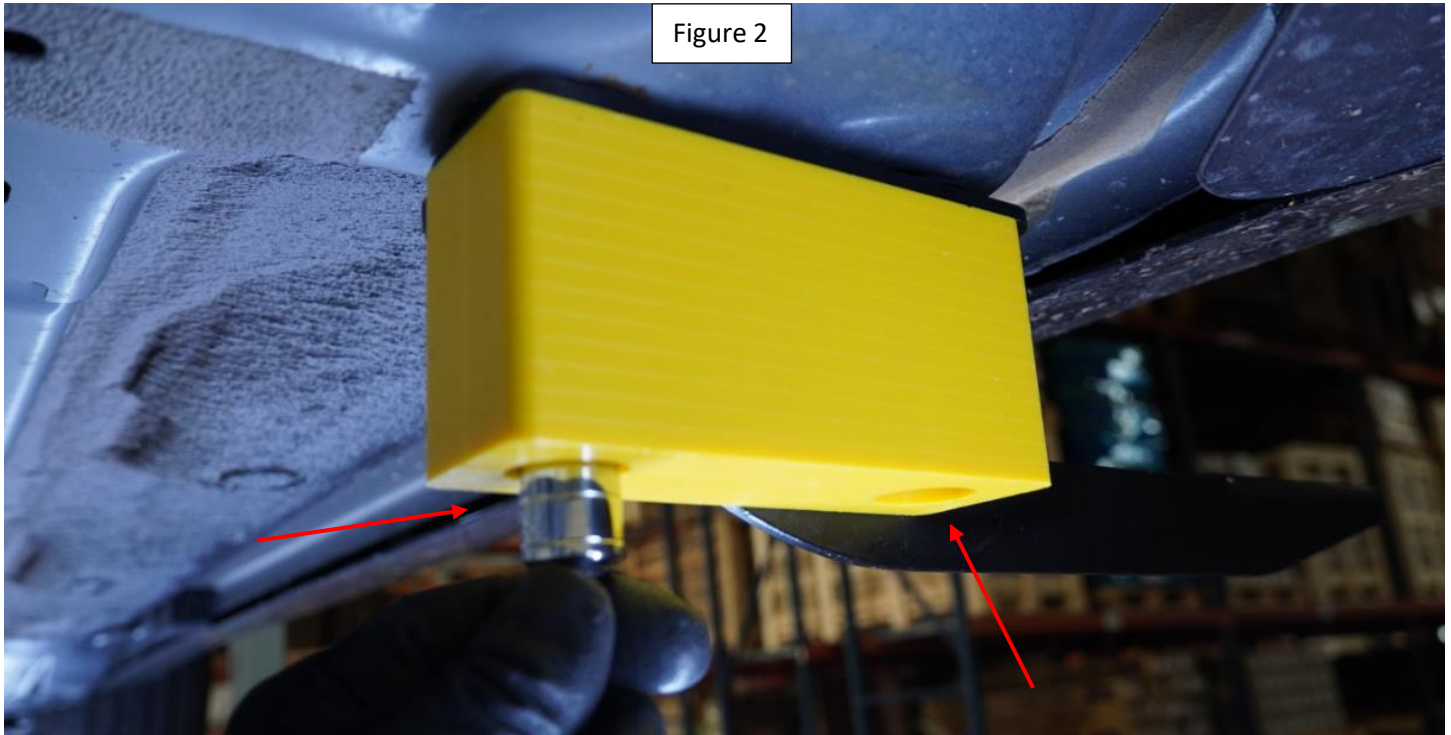
**PROFESSIONAL INSTALLATION RECOMMENDED.** Note due to differences in years and models we suggest trimming them after bracket installation.

**Step 1:** locate front mounting points. The large red arrow points towards the front of the vehicle. Install #12 HTC 369 as shown in **Figure 1**.



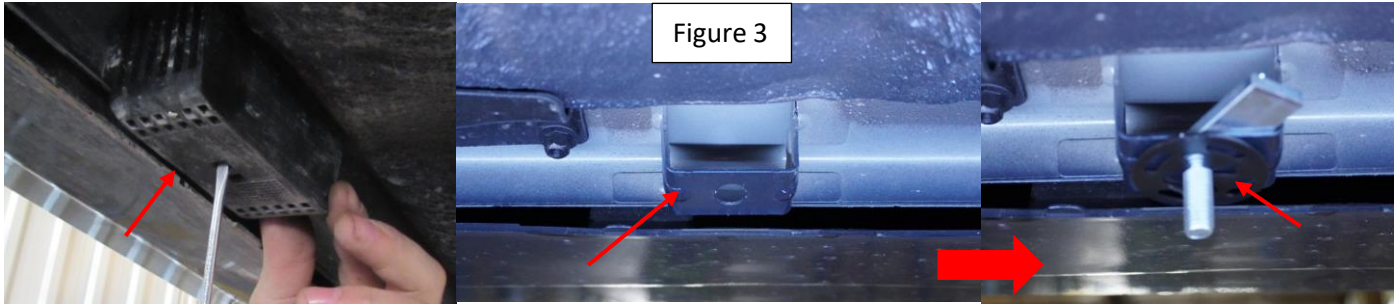
# Installation Instructions 4115 Bracket Kit

**Step 2:** Install front bracket, placing supplied jack point block #7 as shown on **Figure 2**. Do not tighten.

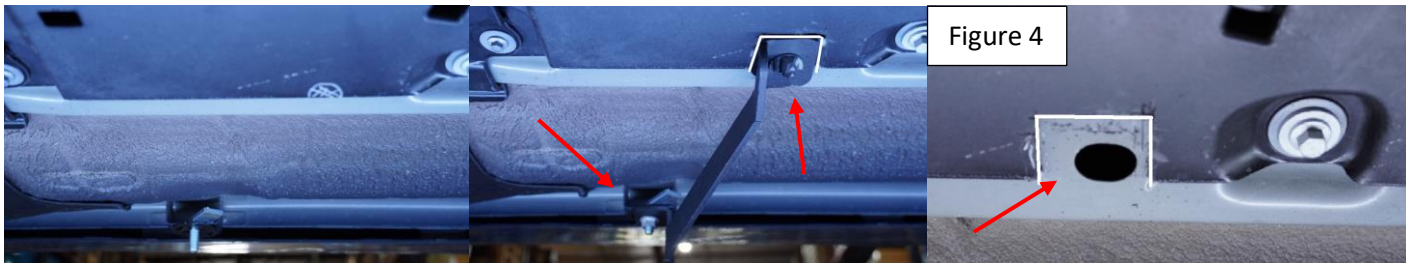


# Installation Instructions 4115 Bracket Kit

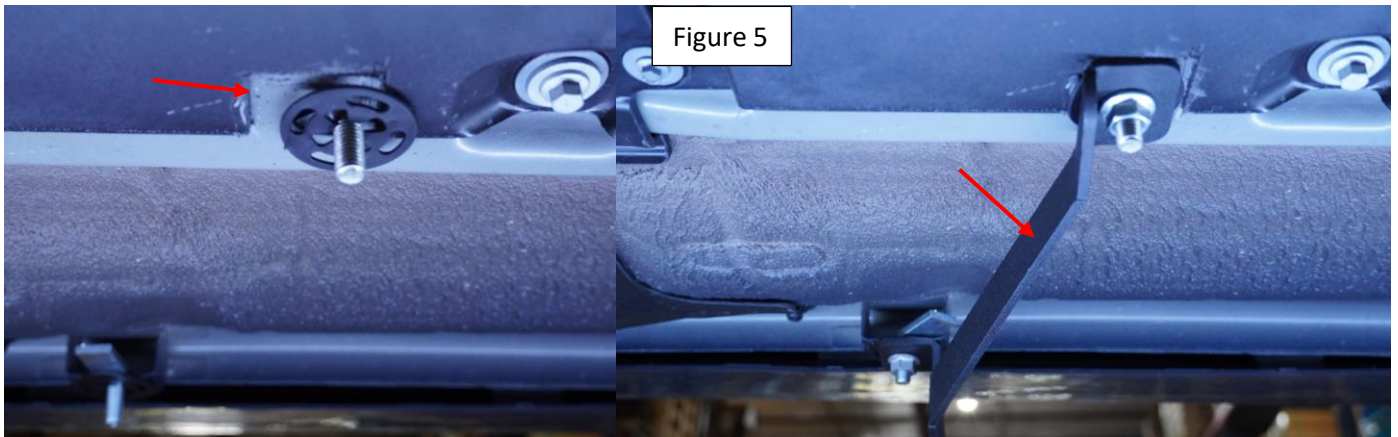
**Step 3:** Locate the middle bracket mounting point and remove plastic block as shown on **Figure 3**. This block will not be used anymore. Place it in safe location for future use. Install #9 HTC 230.



**Step 4:** Using the middle bracket as a guide, bolt on the front section and follow the bracket to the plastic panel. Scive, use a razor blade and remove material to expose the hole. **Figure 4**.

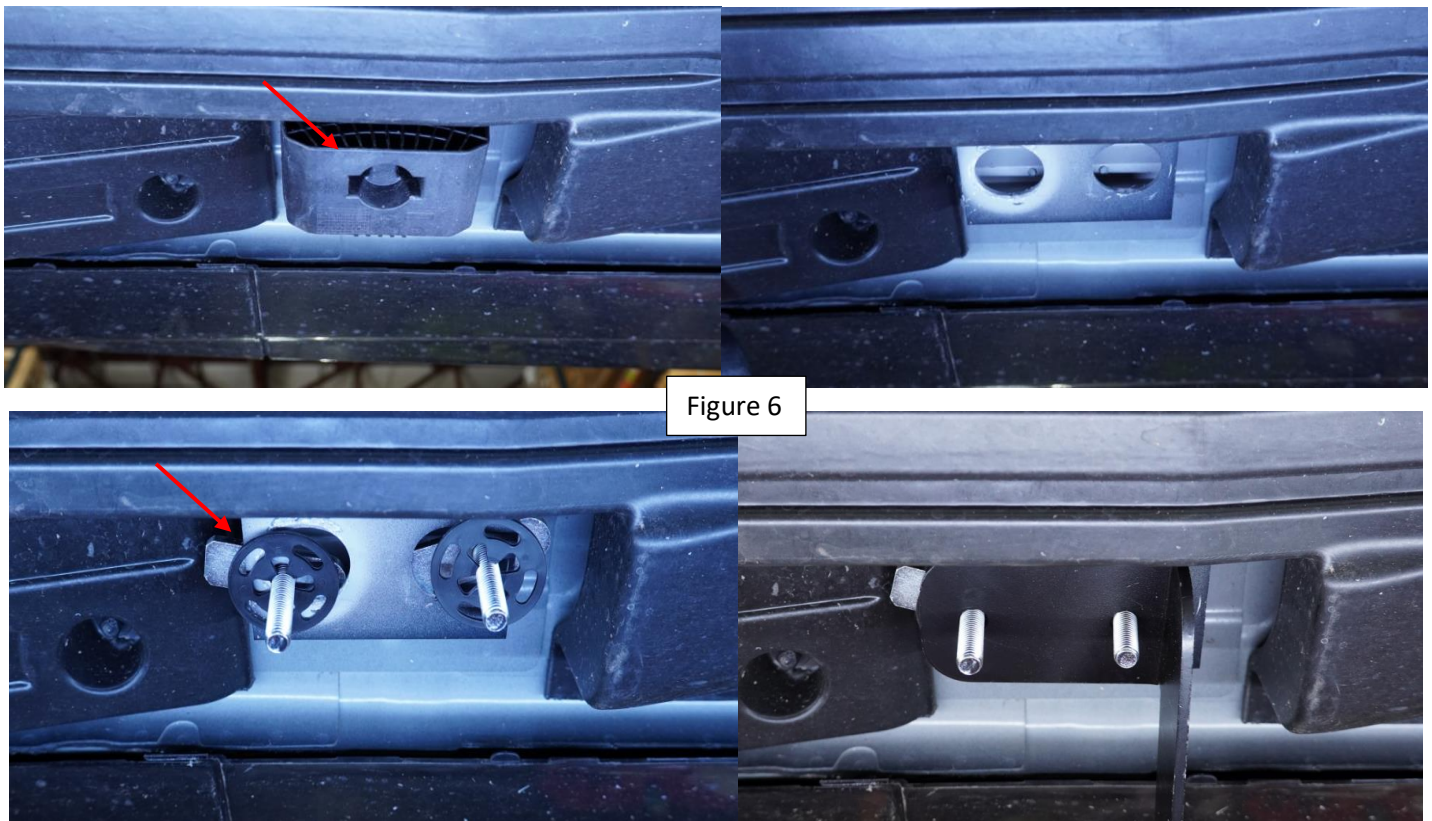


**Step 5:** Install #10 HTC 243 and complete the bracket installation. **Figure 5**. Do not tighten.

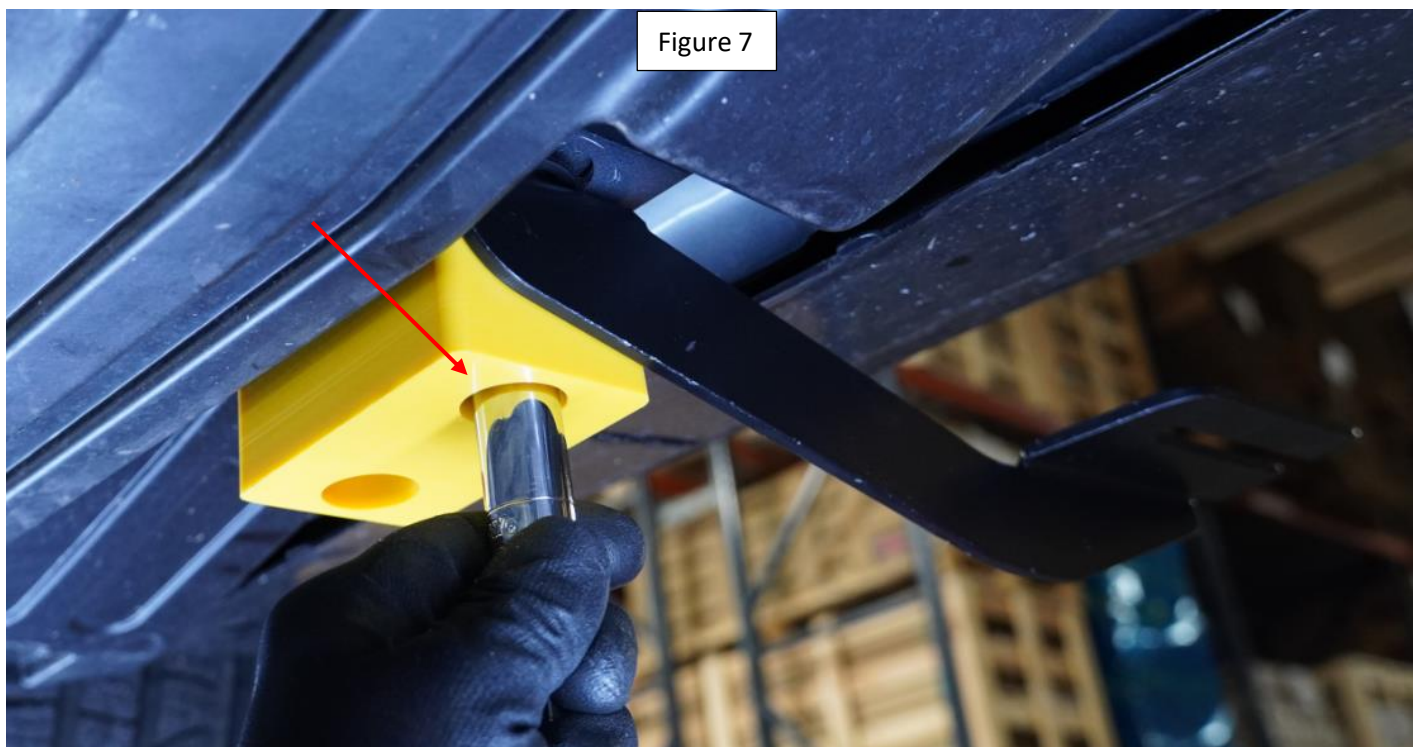


# Installation Instructions 4115 Bracket Kit

**Step 6:** Remove rear plastic pad and install #11 HTC 328 as shown in **Figure 6**.



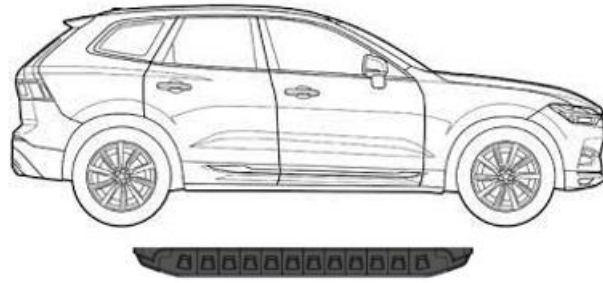
**Step 7:** Install rear bracket, place supplied jack point block #8 as shown in **Figure 7**. Do not tighten.



# Installation Instructions 4115 Bracket Kit

---

**Step 6:** Proceed to last page of this manual for running board install instructions and torque values



For Technical support please call our team at 1-866-717-6645 and one of our experts will assist you with this installation.

**Don't forget to leave a review of your installation at**  
[www.Romik.com](http://www.Romik.com)

**Thank you for choosing Romik.**

# Installation Instructions Running Boards

**NOTE: Use of power tools will damage the bottom of the running board and void your warranty.**

**Step 1: loosen the M8 hardware on back of the running boards.**

**Step 2: Slide running board onto brackets**

**Step 3: Tighten hardware to 7 ft lbs.**

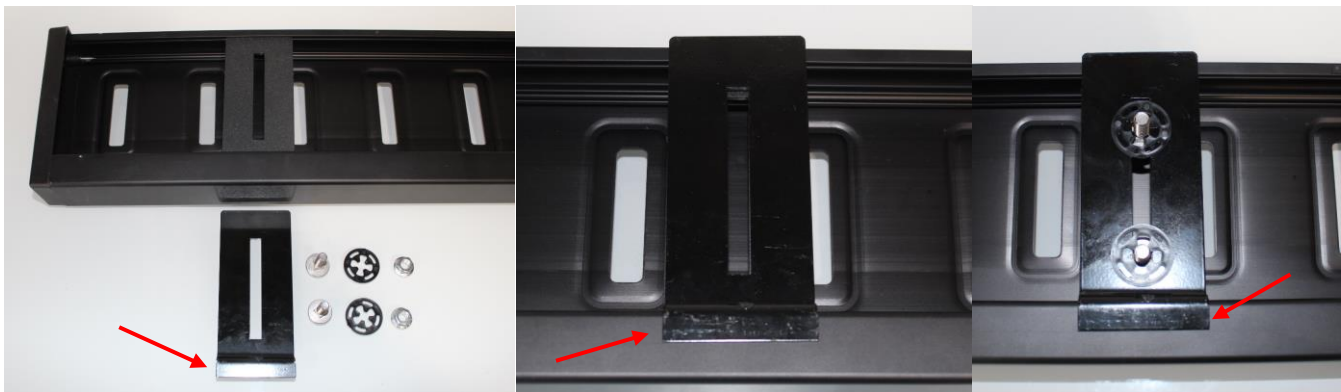


## ROF/RPD/ROB Running boards

**Step 1: Place clamping plate on top of running board as shown below. Make sure clamping plate sits correctly on running board surface.**

**Step 2: Install carriage bolts and plastic retaining clips as shown below.**

**Step 3: Install and tighten hardware to 7 ft lbs.**



## Product Registration and Warranty Information

- Register your Romik products at <https://romik.com/productregistration>
- Warranty information at <http://www.romik.com/warranty>



## Cleaning and maintaining your Romik Running boards

Cleaning and maintaining your running boards is important, apply a light coat of a quality carnauba wax at least 2X per year. Wash often with mild soap and make sure to remove all soap residue. Many car automatic carwashes use a strong soap, make sure to use enough water to remove all residue.

For video instructions on how to clean your Romik products please click here <https://romik.com/cleaning>