



Installation Instructions

REV 2 04/15/20

Part No. **3032**

Product: Running Boards

Application:

Mercedes Benz GLC 2016+

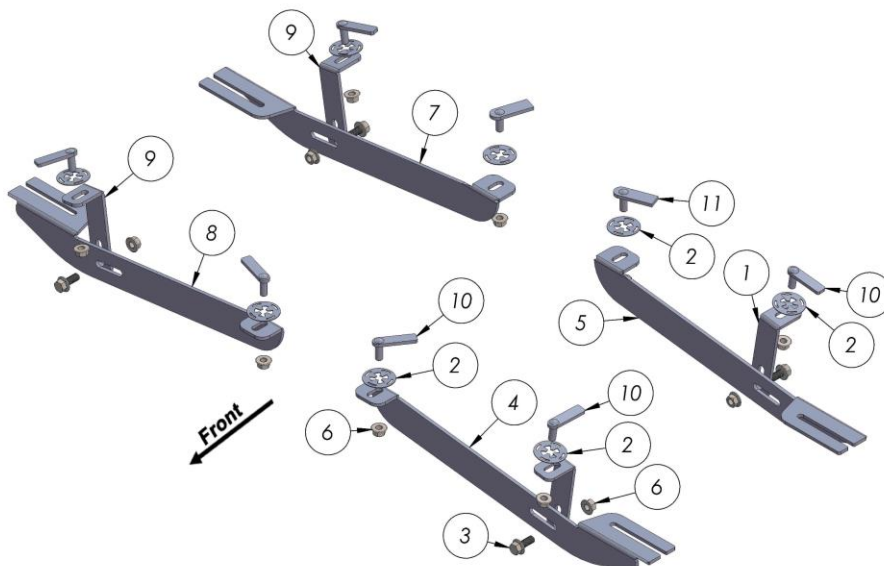
Level of Difficulty: 1 2 3 4 **5**

Installation Time: 240 min

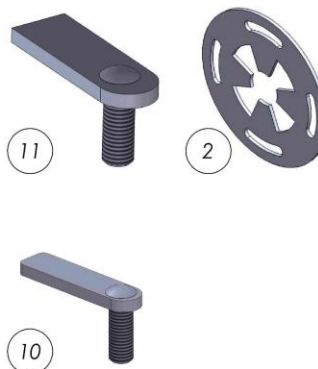
Hardware	Torque Specifications
M6 Bolt	3 ft-lbs.
M8 Bolt	7 ft-lbs.
M10 Bolt	16 ft-lbs.
M12 Bolt	28 ft-lbs.

ATTENTION: Use correct torque settings to avoid damaging the running boards and or mounting brackets. Failure to do so will void your warranty.

If you have any questions please contact our technical team at 1-866-717-6645



ITEM/NO	PART NAME	QTY
1	3032850FB1 DRIVER	2
2	HTC 269 - CLIPS (M10)	8
3	DIN6921 FLANGE BOLT - M10x25	4
4	3032850F0 DRIVER	1
5	3032850B0 DRIVER	1
6	DIN6923 FLANGE NUT - M10	12
7	3032850B0 PASSENGER	1
8	3032850F0 PASSENGER	1
9	3032850FB1 PASSENGER	2
10	HTC 262 - M10X30 (5X15X60)	6
11	HTC 230 - M10x25	2



Installation Instructions 3032 Bracket kit

Video
Installation
Instruction:

NOTE: This vehicle requires undercarriage panel trimming. Due to complexity professional installation recommended.

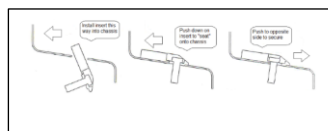
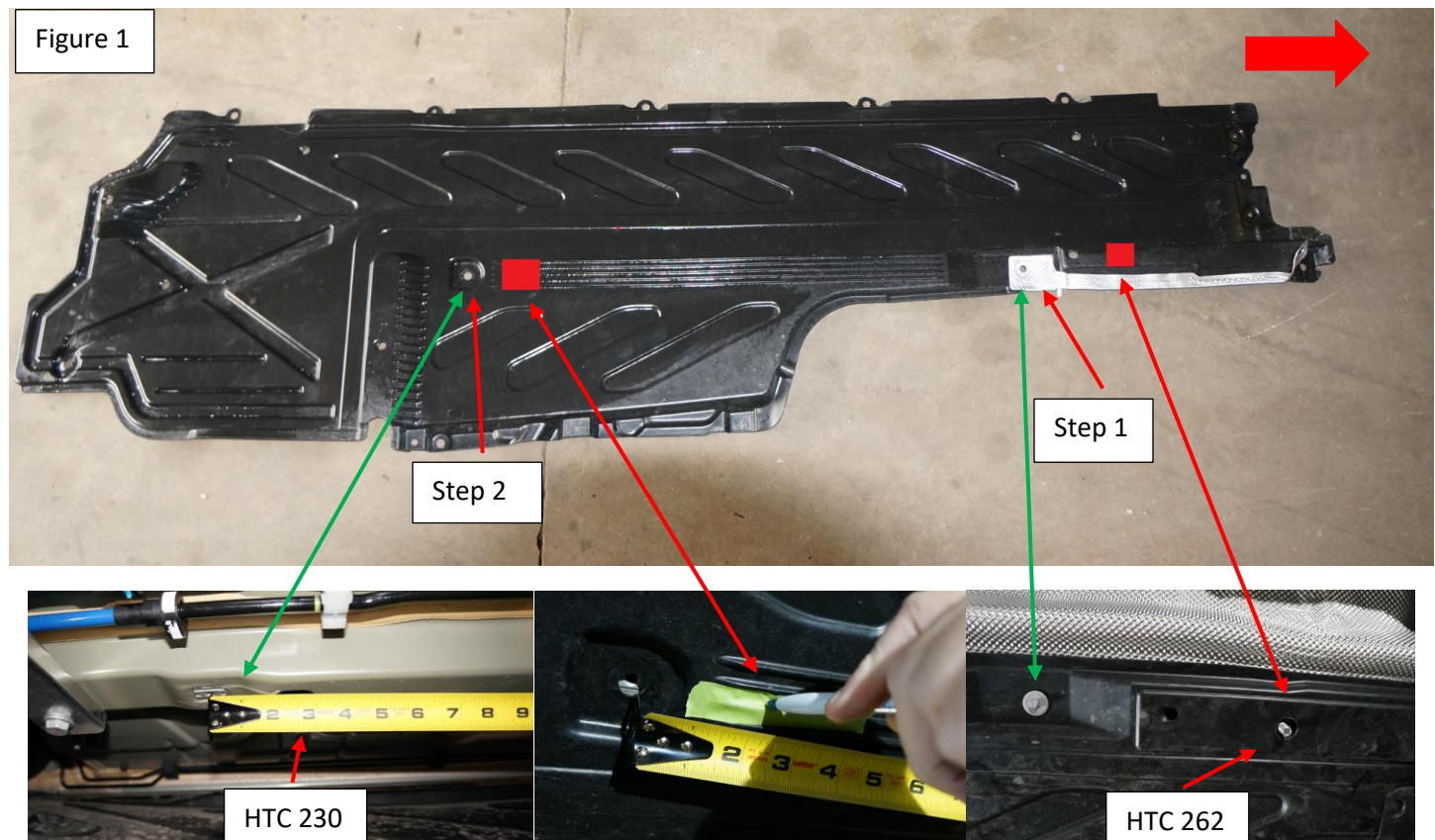
Option 1: Remove plastic undercarriage panels. If you do not have a lift this step is recommended.

Option 2: Cut in place. Use the same measurements as if performing option 1.

Large red arrow points to the front of the vehicle. Figure 1

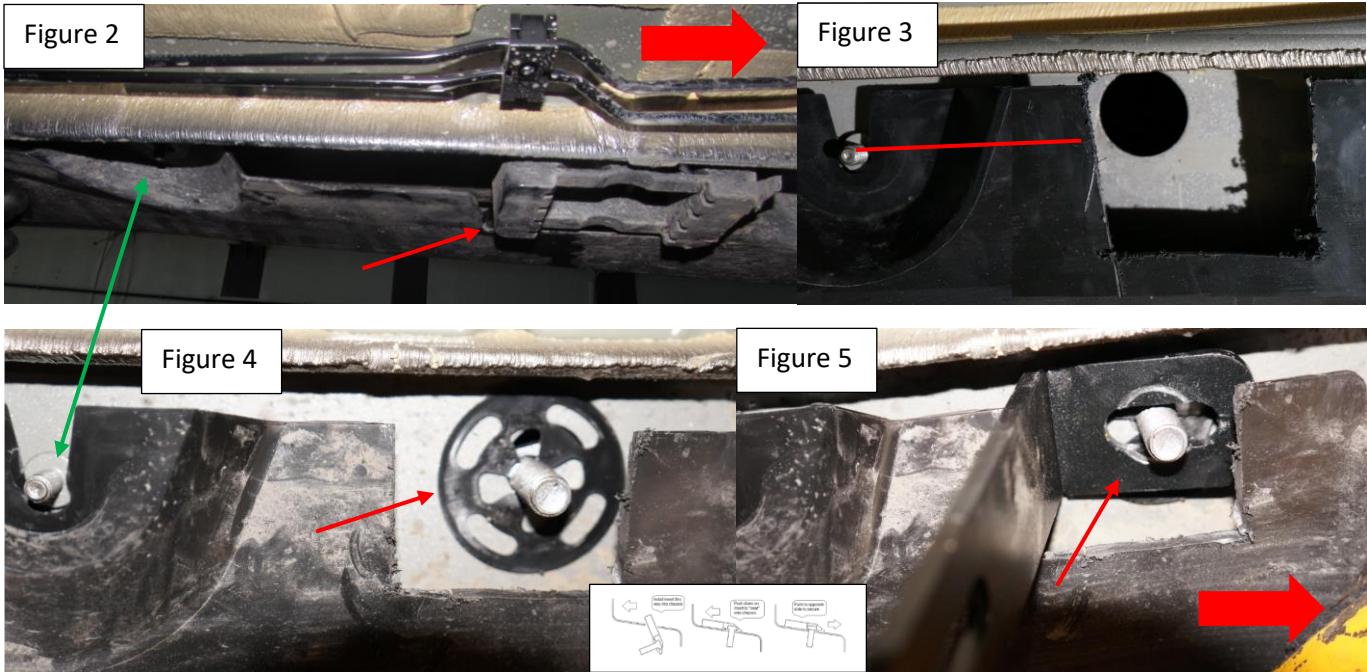
Step 1: Measure 8 ½ inches from front mounting area. Green arrow shows where the panel is fasten. At 8 ½ make a square cut measuring 2 x 2 red square. You can perform this on the vehicle.

Step 2: Measure 1 ½ inch from rear fastener and make a square cut measuring 2 x 2 red square. Once the cuts are made proceed to install provided HTC 262 in front and HTC 230 in rear.

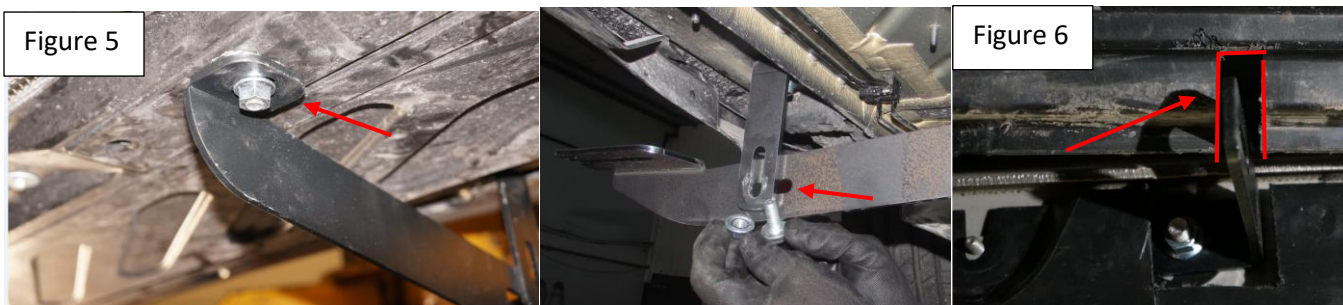


Installation Instructions 3032 Bracket kit

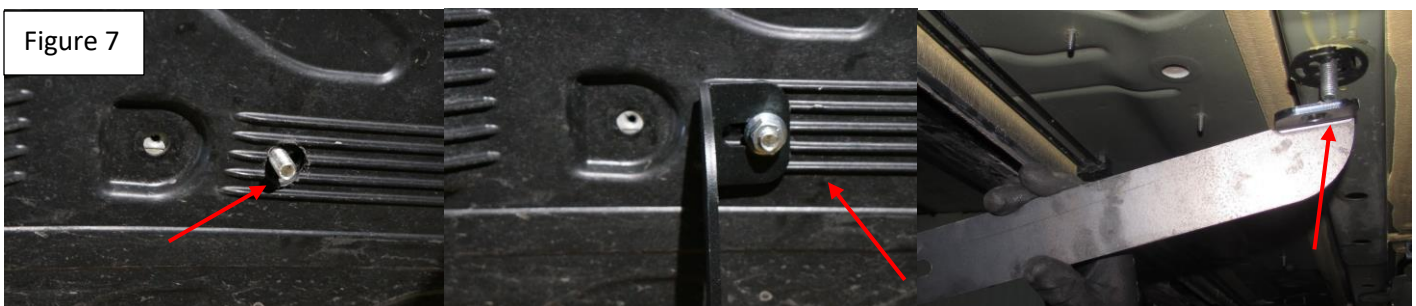
Step 3: Locate extra support area. Note green arrow shows factory nut that needs to be removed to gain access to the mounting hole. Measure 3 ½ inches from the stud towards the jack point and cut a 3 x 2 inch box to expose the factory hole Figure 3. If covered with tape remove tape and install provided HTC 262 Figure 4. Install extra support bracket as shown Figure 5. Do not tighten



Step 4: Install front main bracket and attach to extra support using supplied M10 hardware. If plastic panel makes contact with extra support trim as needed. Do not tighten

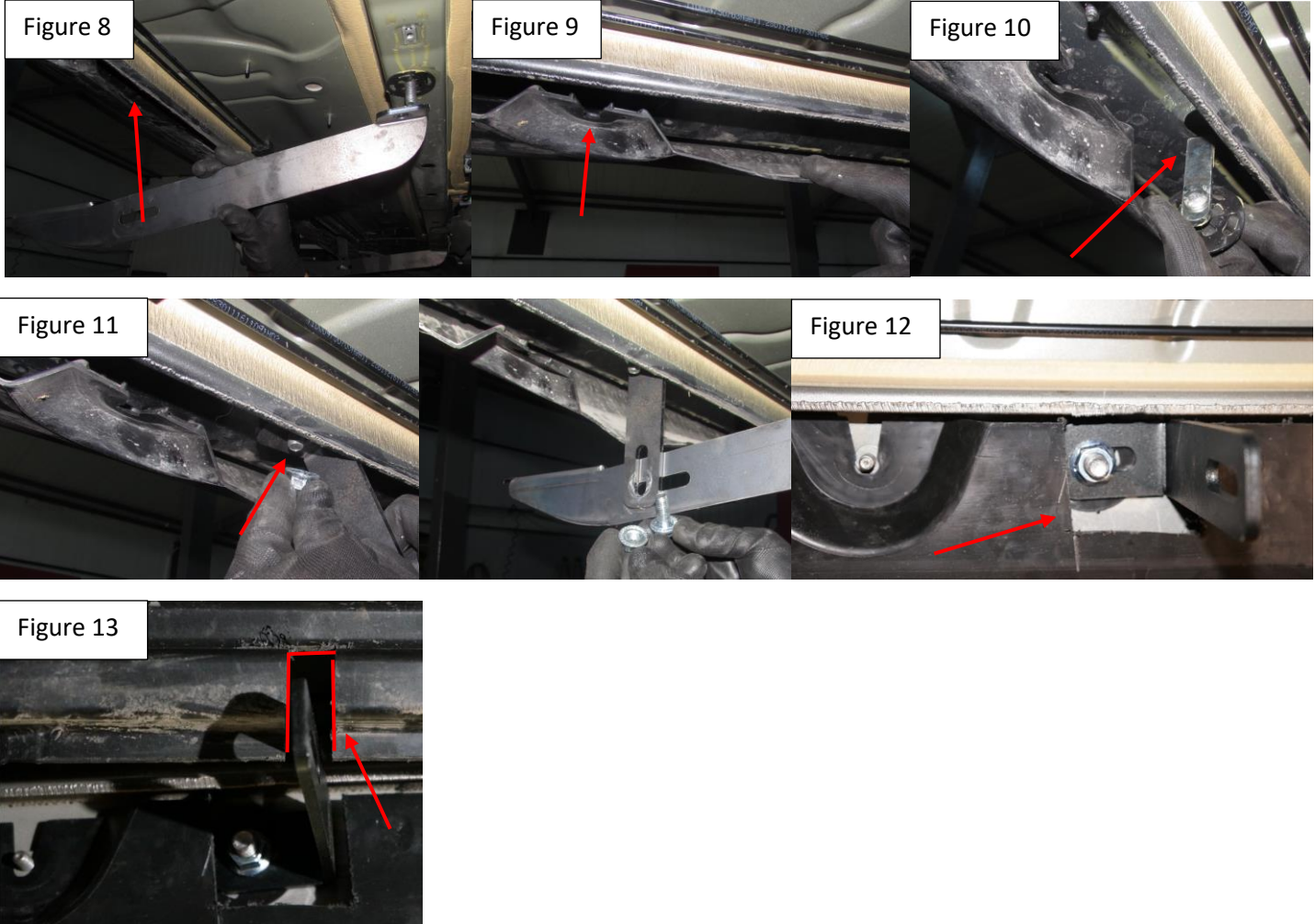


Step 5: Follow the same steps as the front bracket. Once plastic panel is modied install provided HTC 230 and attach rear main bracket. Figure 7. Note if you modify the panels on the vehicle the opening will look different and will allow for a faster install.



Installation Instructions 3032 Bracket kit

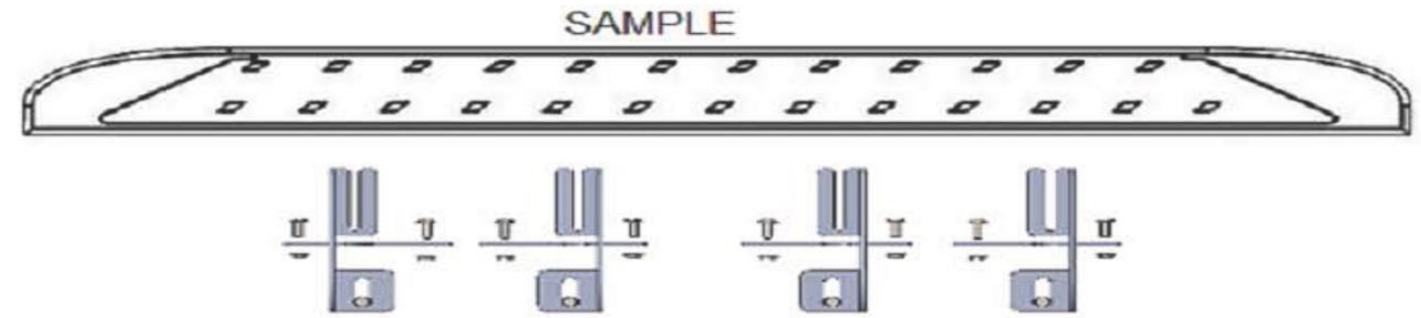
Step 6: After installing rear main bracket, use it to find the extra support location Figure 8. Remove factory nut to expose mounting hole Figure 9. Install provided HTC 262 as shown Figure 10. Fasten extra support bracket Figure 11. Measure 3 ½ inches from the stud towards the jack point and cut a 3 x 2 inch box to expose the factory hole Figure 12. . If plastic panel makes contact with extra support trim as needed Figure 13. Attach main bracket to extra support using supplied M10 hardware. Do not tighten



Step 7: Proceed to last page of this manual for running board install instructions and torque values
For Technical support please call our team at 1-866-717-6645 and one of our experts will assist you with this installation

Thank you for choosing Romik.

Running Board Installation Instructions



RAL / RB2 / REC / RCV / RZR



ROB / ROF / RPD

- 1) Flip your Romik running boards onto a flat surface, make sure to place the running boards on a towel or cardboard in order to protect the surface Figure 1.
- 2) Loosen the M8 bolts on back of your running boards Figure 2. Depending on your model there will be either 6 or 8 bolts installed per side.
- 3) Once your brackets have been installed, place the running board onto the brackets as shown on Figure 3.
- 4) Adjust running boards, centering on vehicle. Hand tight M8 hardware on running boards.
- 5) Follow the torque procedures, torque M8 hardware to **7 ft-lbs** using a torque wrench.
- 6) Cleaning and maintaining your running boards is important, apply a light coat of a quality carnauba wax at least 2X per year. Wash often with mild soap and make sure to remove all soap residue. Many car automatic carwashes use a strong soap, make sure to use enough water to remove all residue.
- 7) Register your products at www.Romik.com/contact/productregistration
- 8) Warranty information at www.Romik.com/warranty