



## Installation Instructions

REV 2 03/05/20

Part No. **2329**

Product: Running Boards

Application:

**Hyundai Santa Fe 2019+**

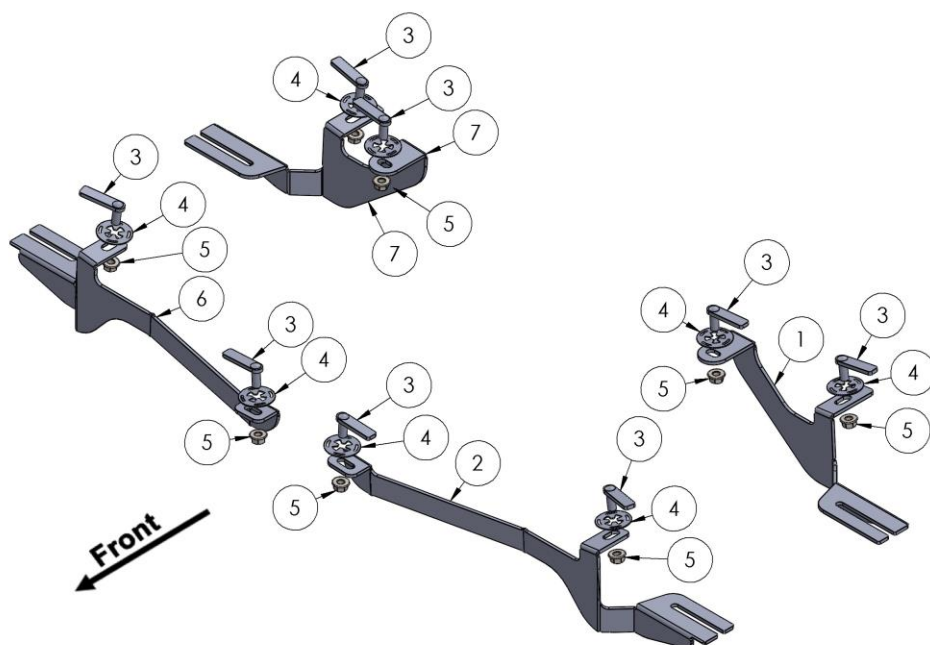
Level of Difficulty: 1 **2** 3 4 5

Installation Time: 60 Min

Hardware	Torque Specifications
M6 Bolt	3 ft-lbs.
M8 Bolt	7 ft-lbs.
M10 Bolt	16 ft-lbs.
M12 Bolt	28 ft-lbs.

**ATTENTION:** Use correct torque settings to avoid damaging the running boards and or mounting brackets. Failure to do so will void your warranty.

If you have any questions please contact our technical team at 1-866-717-6645



ITEM	PART NAME	QTY
1	2329850B0 DRIVER	1
2	2329850F0 DRIVER	1
3	HTC 262 - M10X30 (5X15X60)	8
4	HTC 269 - CLIPS (M10)	8
5	DIN 6923 FLANGE NUT - M10	8
6	2329850F0 PASSENGER	1
7	2329850B0 PASSENGER	1



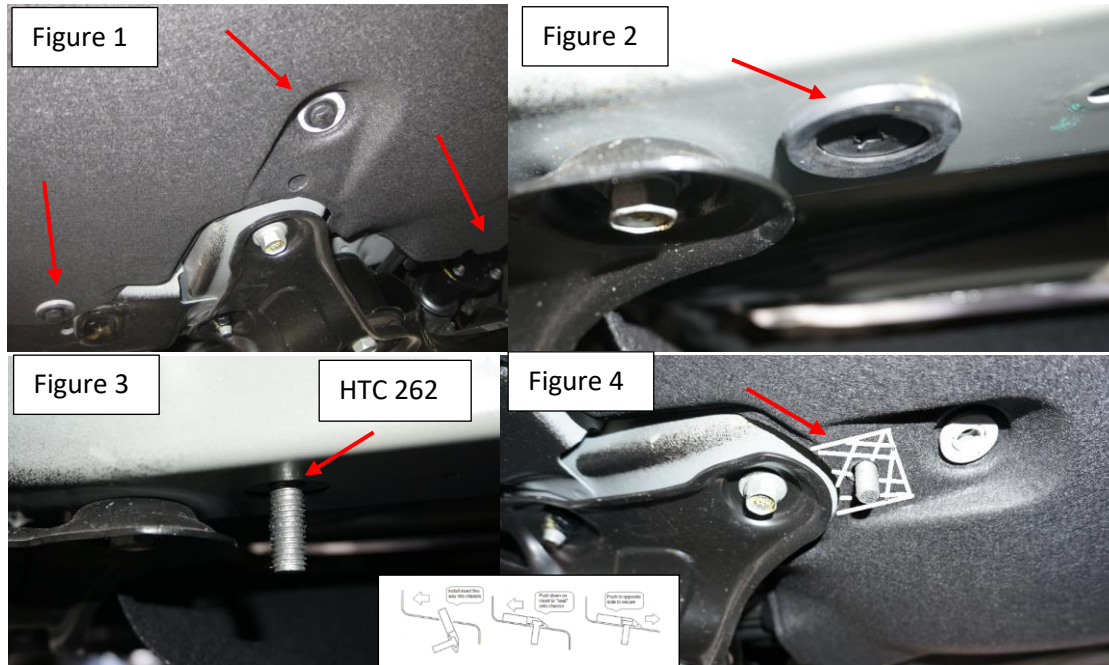
# Installation Instructions 2329 Bracket Kit

Video  
Installation  
Instruction:

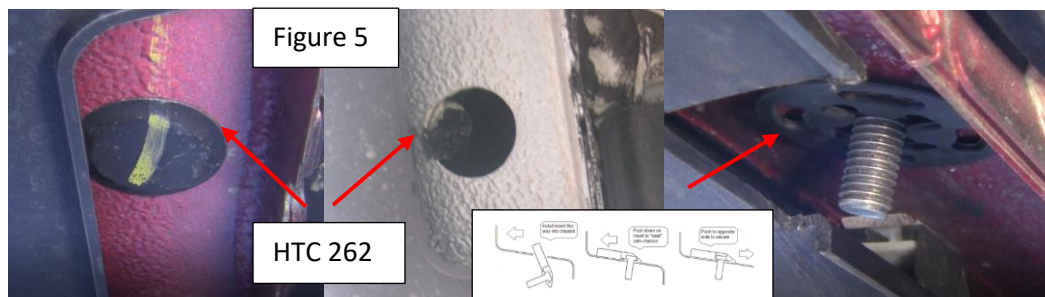


**Step 1:** Locate front mounting locations and hardware as per 1<sup>st</sup> page of this installation manual

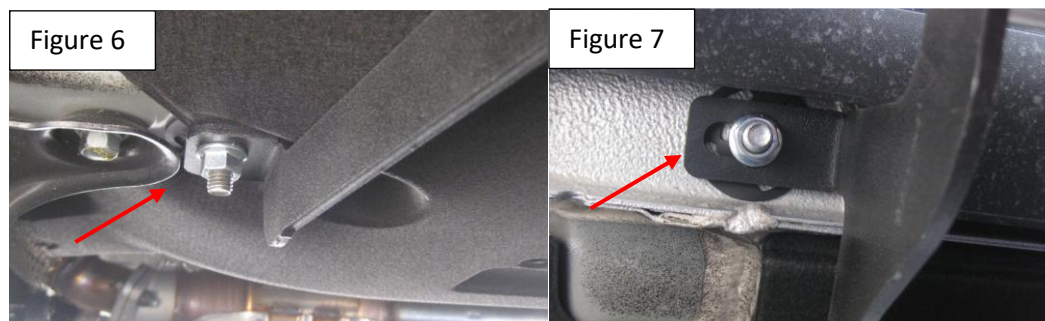
**Step 2:** Note: No trimming necessary however if you want to save 30 minutes you may trim a small piece of felt under the vehicle. **Option 1** remove all hardware holding underbody panels see Figure 1. Remove factory rubber plug Figure 2. Install provided HTC 262 **Option 2** cut a small section of underbody panel to reveal rubber plug, remove Figure 4 and install provided HTC 262



**Step 3:** Locate and remove factory rubber plug as shown on Figure 5. Install provided HTC 262

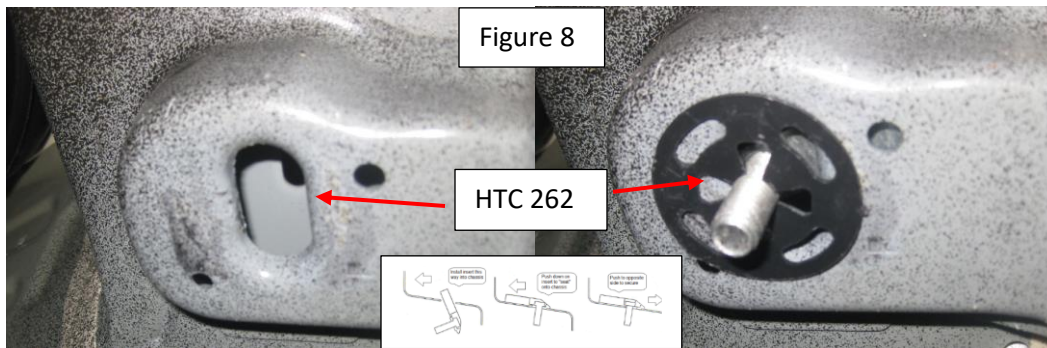


**Step 4:** Install brackets using supplied hardware Figure 6 and Figure 7. Do not tighten

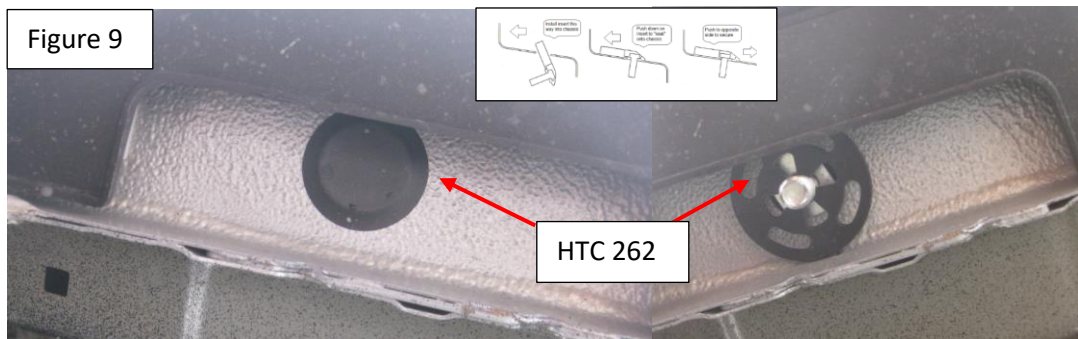


# Installation Instructions 2329 Bracket Kit

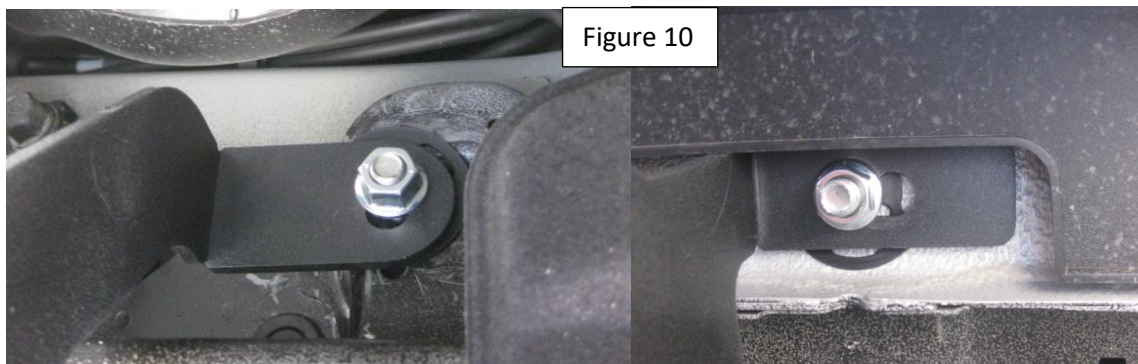
**Step 5:** Locate provided HTC 262 on rear bracket mounting area Figure 8



**Step 6:** Locate outer mounting point and remove rubber plug. install provided HTC 262 Figure 9



**Step 7:** Install rear bracket using provided hardware Figure 10. Do not tighten

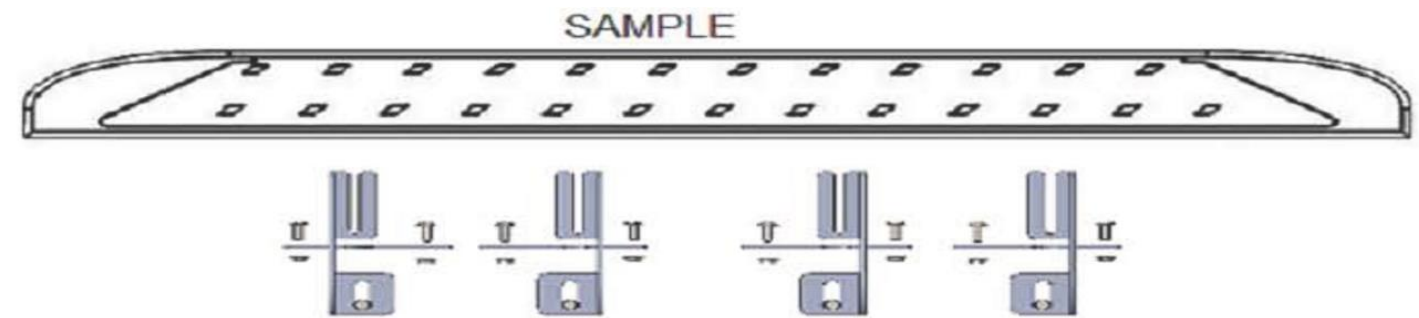


**Step 8:** Proceed to last page of this manual for running board install instructions and torque values  
For Technical support please call our team at 1-866-717-6645 and one of our experts will assist you with this installation

***Thank you for choosing Romik.***



# Running Board Installation Instructions



**RAL / RB2 / REC / RCV / RZR**



**ROB / ROF / RPD**

- 1) Flip your Romik running boards onto a flat surface, make sure to place the running boards on a towel or cardboard in order to protect the surface Figure 1.
- 2) Loosen the M8 bolts on back of your running boards Figure 2. Depending on your model there will be either 6 or 8 bolts installed per side.
- 3) Once your brackets have been installed, place the running board onto the brackets as shown on Figure 3.
- 4) Adjust running boards, centering on vehicle. Hand tight M8 hardware on running boards.
- 5) Follow the torque procedures, torque M8 hardware to **7 ft-lbs** using a torque wrench.
- 6) Cleaning and maintaining your running boards is important, apply a light coat of a quality carnauba wax at least 2X per year. Wash often with mild soap and make sure to remove all soap residue. Many car automatic carwashes use a strong soap, make sure to use enough water to remove all residue.
- 7) Register your products at [www.Romik.com/contact/productregistration](http://www.Romik.com/contact/productregistration)
- 8) Warranty information at [www.Romik.com/warranty](http://www.Romik.com/warranty)