



Installation Instructions

REV 3 01/28/20

Part No. **2219**

Product: Running Boards

Acura MDX 2014+

Honda Pilot 2016+

Honda Passport 2019+

Honda Ridgeline 2017+

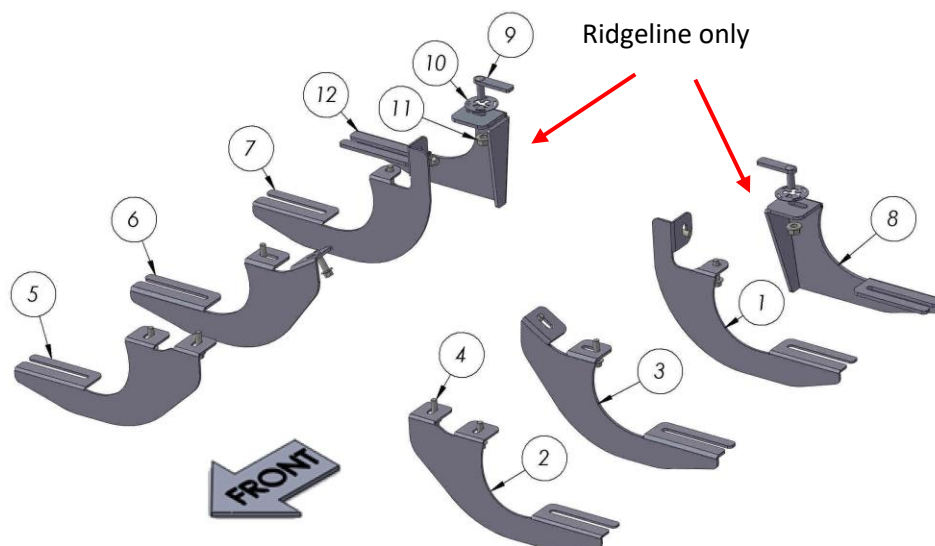
Level of Difficulty: **1** 2 3 4 5

Installation Time: 60 - 90 Min

Hardware	Torque Specifications
M6 Bolt	3 ft-lbs.
M8 Bolt	7 ft-lbs.
M10 Bolt	16 ft-lbs.
M12 Bolt	28 ft-lbs.

ATTENTION: Use correct torque settings to avoid damaging the running boards and or mounting brackets. Failure to do so will void your warranty.

If you have any questions please contact our technical team at 1-866-717-6645



ITEM	PART NAME	QTY
1	BRACKET DRIVER	1
2	BRACKET DRIVER	1
3	BRACKET DRIVER	1
4	DIN 6921 FLANGE BOLT - M8 x 30	12
5	BRACKET PASSENGER	1
6	BRACKET PASSENGER	1
7	BRACKET PASSENGER	1
8	BRACKET DRIVER Ridgeline only	1
9	HTC 242 - M10X30	2
10	HTC 269 - CLIPS (M10)	2
11	DIN 6923 FLANGE NUT - M10	2
12	BRACKET PASSENGER Ridgeline only	1



Installation Instructions 2219 Brackets

Video
Installation
Instruction:

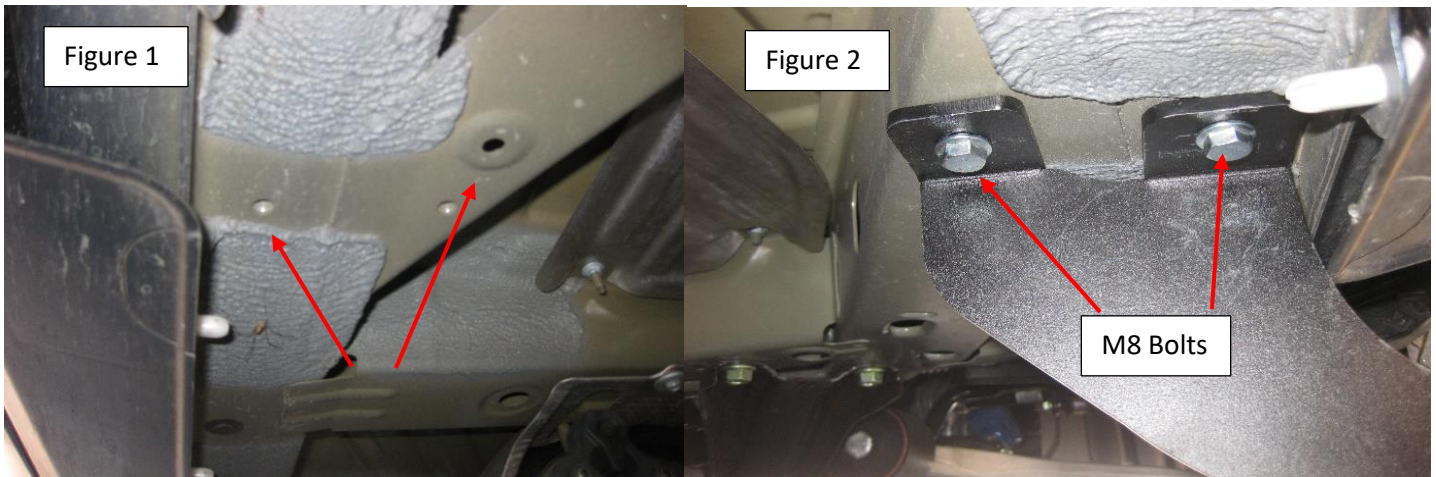


NOTE: For Honda Ridgeline models use 4 brackets all other models only use first 3 brackets

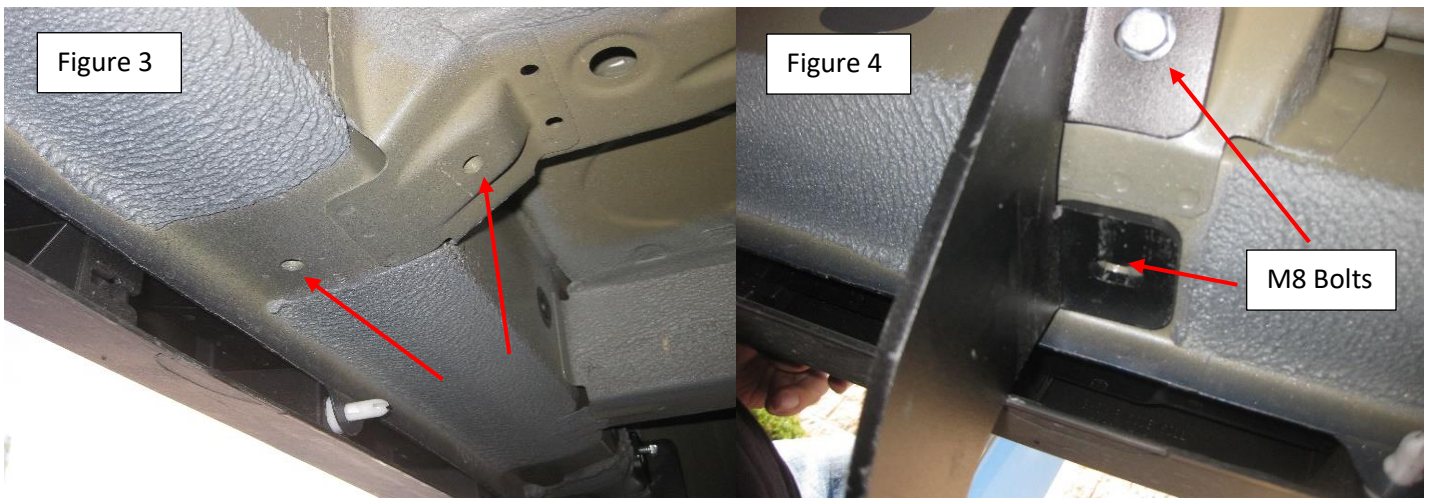
Due to body shape small visible gap in the middle of the vehicle. If not sure please review images on www.Romik.com before installing.

Step 1: Locate front mounting locations and hardware as per 1st page of this installation manual Figure 1

Step 2: Install front bracket using supplied M8 hardware Figure 2 Do not tighten.

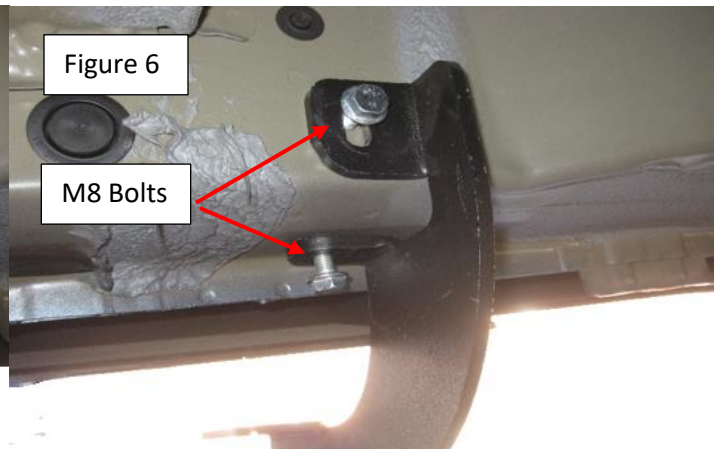
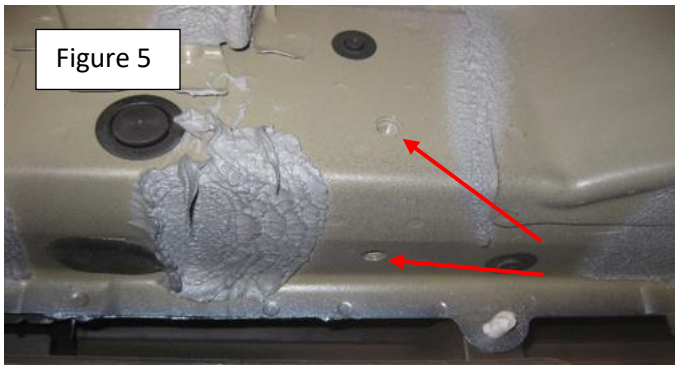


Step 2: Locate 2nd bracket mounting area Figure 3. Using supplied M8 hardware install middle bracket Figure 4 Do not tighten,



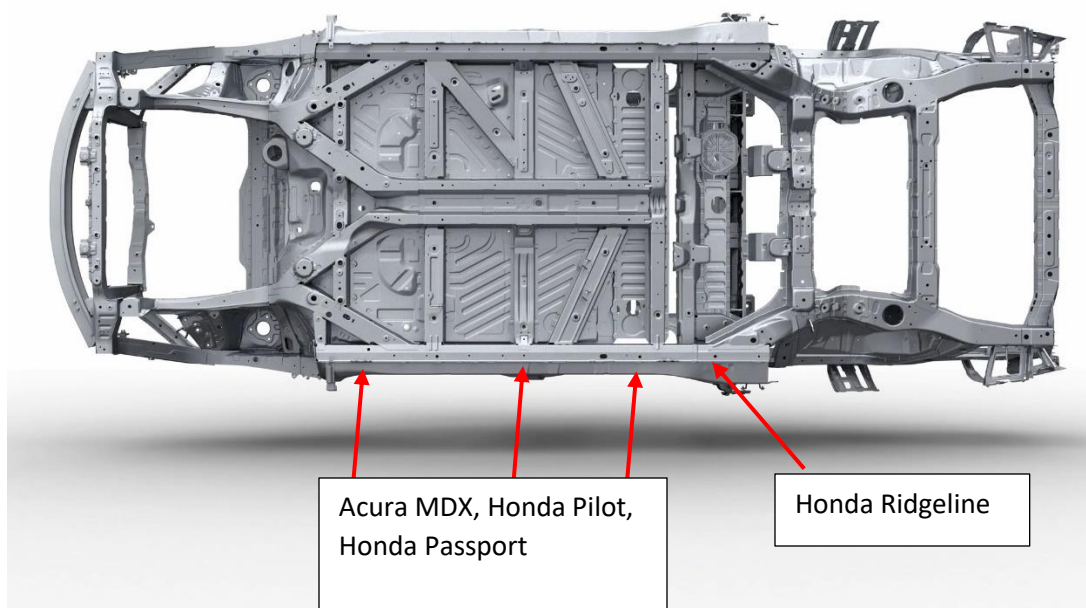
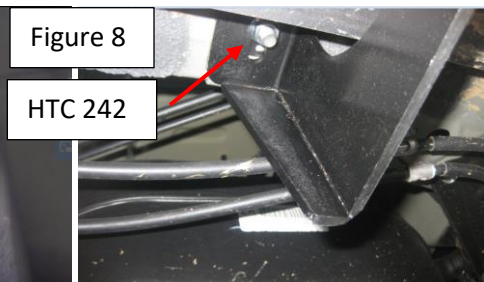
Installation Instructions 2219 Brackets

Step 3: Locate 3rd bracket mounting area Figure 5. Using supplied M8 hardware install middle bracket Figure 6 Do not tighten,



Step 3: Acura MDX, Honda Passport, Pilot proceed to step 5 . **Honda Ridgeline proceed to step 4**

Step 4: Locate Honda Ridgeline rear most bracket mounting location Figure 7, Install supplied HTC 242 as shown on Figure 8 Install bracket Do not tighten.



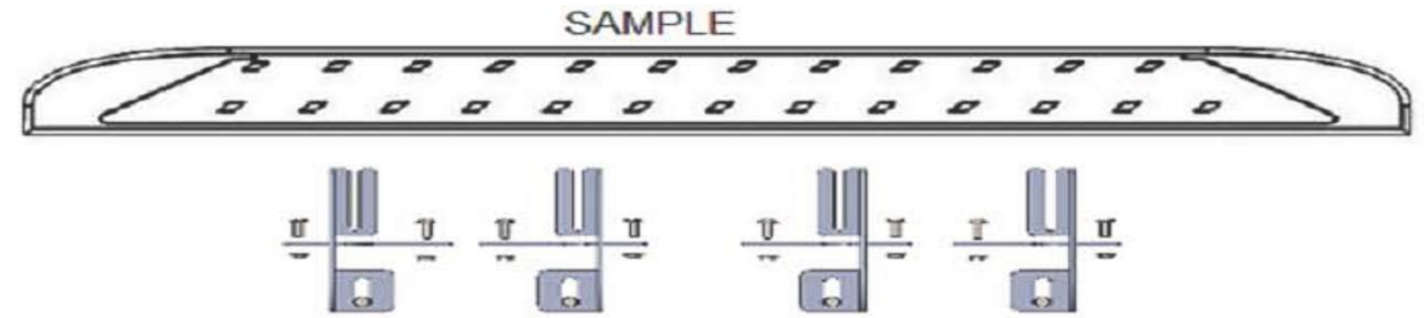
Installation Instructions 2219 Brackets

Step 5: Proceed to last page of this manual for running board install instructions and torque values

For Technical support please call our team at 1-866-717-6645 and one of our experts will assist you with this installation.

Thank you for choosing Romik.

Running Board Installation Instructions



RAL / RB2 / REC / RCV / RZR



ROB / ROF / RPD

- 1) Flip your Romik running boards onto a flat surface, make sure to place the running boards on a towel or cardboard in order to protect the surface Figure 1.
- 2) Loosen the M8 bolts on back of your running boards Figure 2. Depending on your model there will be either 6 or 8 bolts installed per side.
- 3) Once your brackets have been installed, place the running board onto the brackets as shown on Figure 3.
- 4) Adjust running boards, centering on vehicle. Hand tight M8 hardware on running boards.
- 5) Follow the torque procedures, torque M8 hardware to **7 ft-lbs** using a torque wrench.
- 6) Cleaning and maintaining your running boards is important, apply a light coat of a quality carnauba wax at least 2X per year. Wash often with mild soap and make sure to remove all soap residue. Many car automatic carwashes use a strong soap, make sure to use enough water to remove all residue.
- 7) Register your products at www.Romik.com/contact/productregistration
- 8) Warranty information at www.Romik.com/warranty