



# Installation Instructions

Part No. 2219

Product: Running Boards

Acura MDX 2014 - 2020

Honda Pilot 2016 - 2022

Honda Passport 2019 - 2025

Honda Ridgeline 2017 - Present

Professional Installation Time: 90 Min.

DIY Installation Time: 180 Min

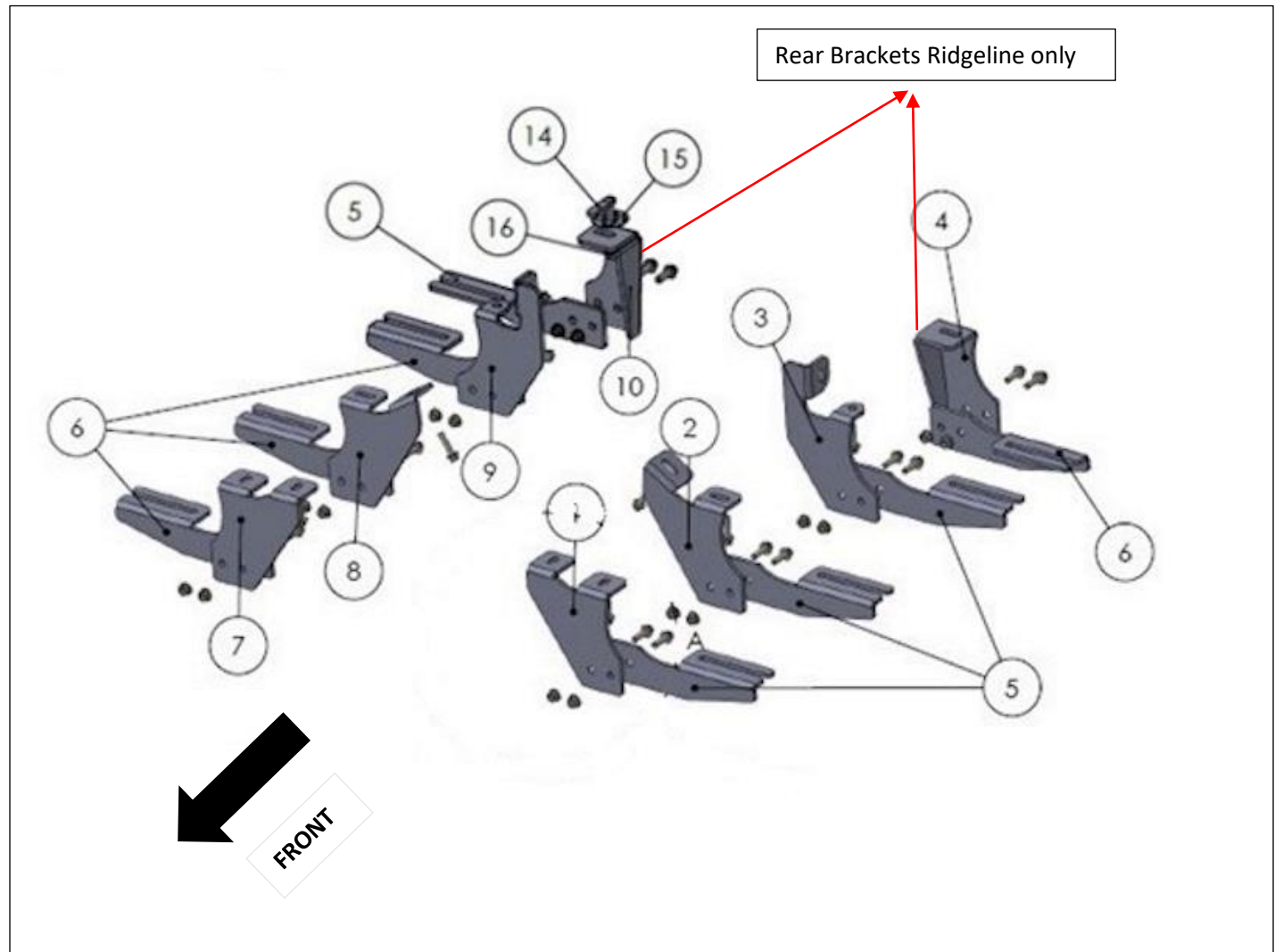
REV 7 09/01/25

Hardware	Torque Aluminum	Torque Steel to Steel
M6 Bolt	3 ft-lbs.	14 ft-lbs.
M8 Bolt	7 ft-lbs.	35 ft-lbs.
M10 Bolt	16 ft-lbs.	64 ft-lbs.
M12 Bolt	28 ft-lbs.	112 ft-lbs.

**ATTENTION:** Use correct torque settings to avoid damaging the running boards and or mounting brackets. Failure to do so will void your warranty. If you have any questions, please contact our technical team at 1-866-717-6645

Attention: Please make sure that you have the latest instructions from Romik.com

QR Scan



**2219**



1  
**2219850F1  
DRIVER SIDE  
1 x QTY**



2  
**2219850C1  
DRIVER SIDE  
1 x QTY**



3  
**2219850B1  
DRIVER SIDE  
1 x QTY**



4  
**2219850B2  
DRIVER SIDE  
1 x QTY**



5  
**2219850F2  
DRIVER SIDE FRONT-CENTER  
PASSENGER SIDE REAR  
BRACKET  
4 x QTY**



6  
**2219850F2  
PASSENGER SIDE FRONT-CENTER  
DRIVER SIDE REAR  
BRACKET  
4 x QTY**



7  
**2219850F1  
PASSENGER SIDE  
1 x QTY**



8  
**2219850C1  
PASSENGER SIDE  
1 x QTY**



9  
**2219850B1  
PASSENGER SIDE  
1 x QTY**



10  
**2219850B2  
PASSENGER SIDE  
1 x QTY**

**HARDWARE**



11  
**M8x30  
FLANGE BOLT  
12x**



12  
**M10 FLANGE  
NUT  
16x**



13  
**M10x25  
FLANGE  
BOLT  
16x**



14  
**HTC 243  
M10x25 (4x12x50)  
2x**



15  
**HTC 269  
M10 CLIPS  
2x**



16  
**M10 FLANGE  
NUT  
2x**

# Installation Instructions 2219 V2 Bracket Kit

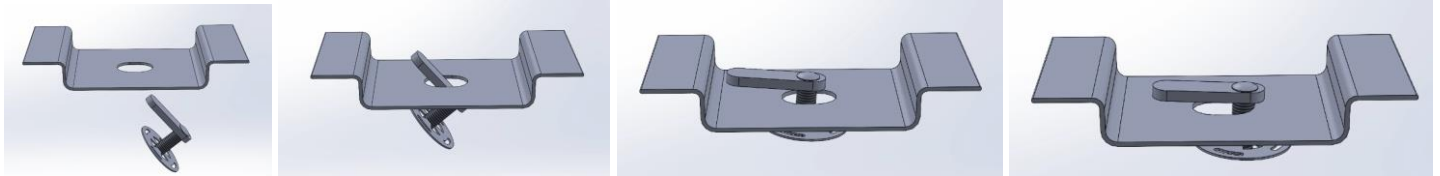


Video  
Installation  
Instruction:

**NOTE:** For Honda Ridgeline models use 4 brackets all other models only use first 3 brackets

Due to body shape small visible gap in the middle of the vehicle. If not sure please review images on [www.Romik.com](http://www.Romik.com) before installing.

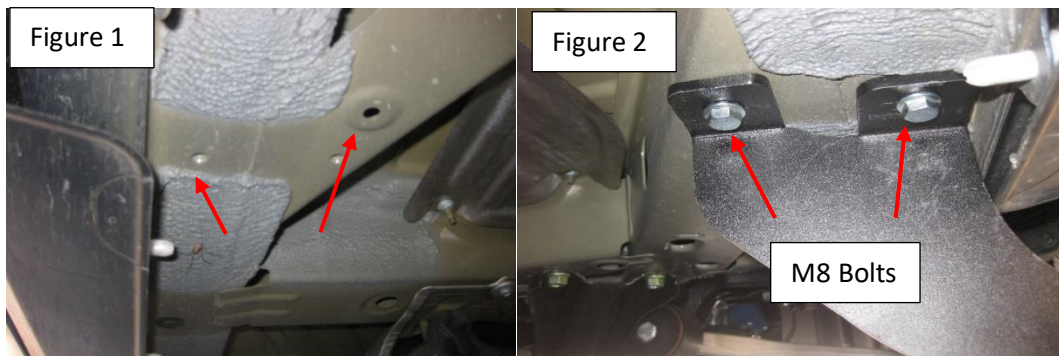
**Important Install Tip:** When installing Romik HTC inserts follow the sequence below. Make sure the HTC is seated correctly and do not use power tools as this will only spin the insert and possibly damage it. Test by tugging on it before installing bracket. **Blue loctite is highly recommended.**



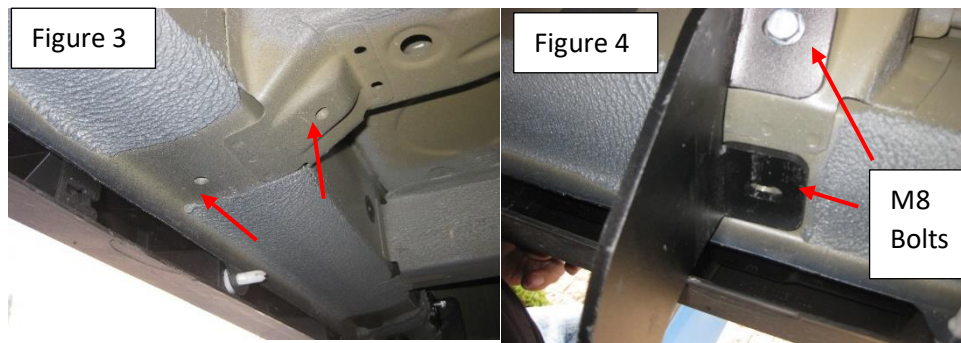
**Step 1:** Pre-Assemble two-piece brackets as shown on first page of the instruction's manual. **Do not tighten.**

Brackets need to be snug made sure they're not tighten.

**Step 2:** Install front bracket using supplied M8 hardware Figure 2 Do not tighten.

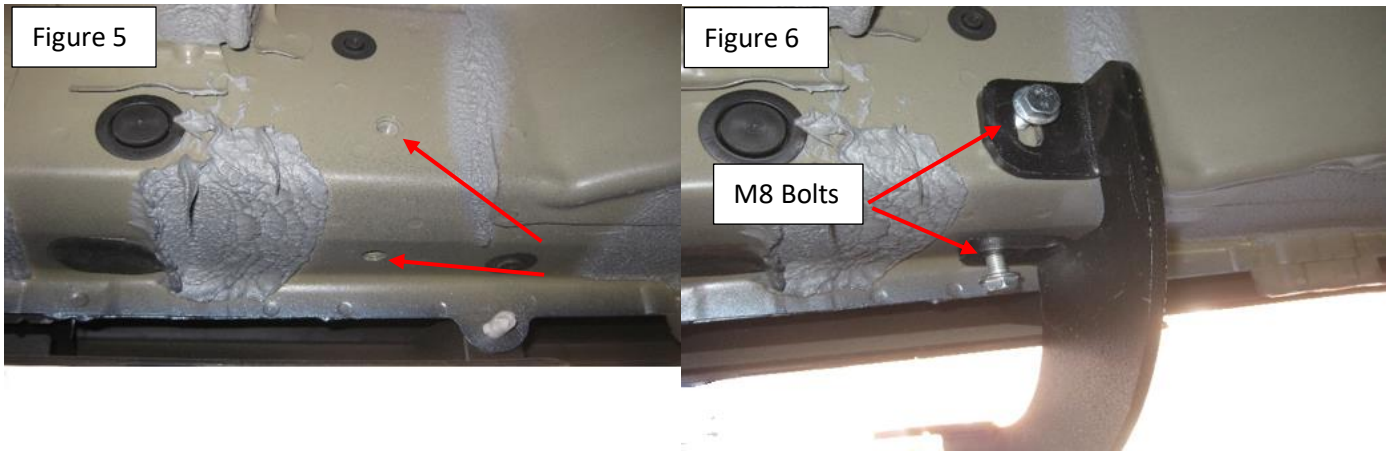


**Step 2:** Locate 2nd bracket mounting area Figure 3. Using supplied M8 hardware install middle bracket Figure 4 Do not tighten,



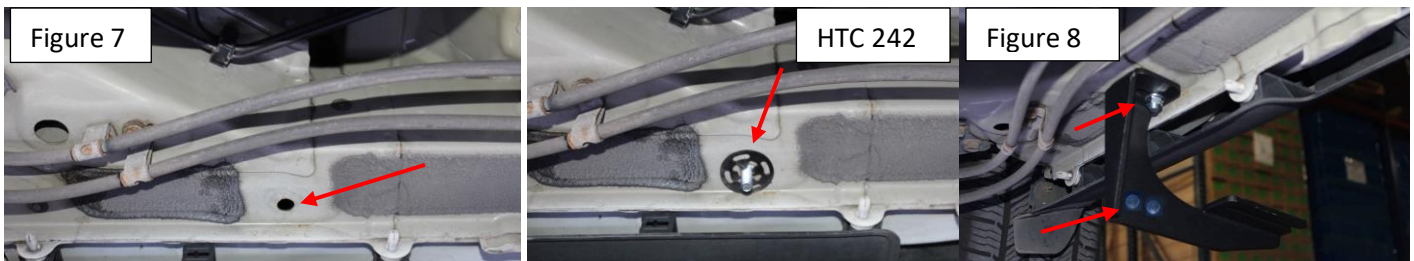
# Installation Instructions 2219 V2 Bracket Kit

**Step 3:** Locate 3rd bracket mounting area Figure 5. Using supplied M8 hardware install middle bracket Figure 6 Do not tighten,



**Step 3:** Acura MDX, Honda Passport, Pilot proceed to step 5 . **Honda Ridgeline proceed to step 4**

**Step 4:** Locate Honda Ridgeline rear most bracket mounting location Figure 7, remove rubber plug and Install supplied HTC 242 as shown Install bracket Do not tighten.



**Step 5:** Tighten the main brackets (All) to the chassis Figure 8. Install running boards onto brackets hand tight only, level the running boards (A level is suggested) and tighten the lower portion for the brackets to 65 ft lbs. Figure 8.

**Step 6:** Proceed to last page of this manual for running board install instructions and torque values

For Technical support please call our team at 1-866-717-6645 and one of our experts will assist you with this installation.

***Thank you for choosing Romik.***

# Installation Instructions Running Boards

**NOTE: Use of power tools will damage the bottom of the running board and void your warranty.**

## RAL/RB2/REC/RZR Running boards

Step 1: loosen the M8 hardware on back of the running boards.

Step 2: Slide running board onto brackets

Step 3: Tighten hardware to 7 ft lbs.

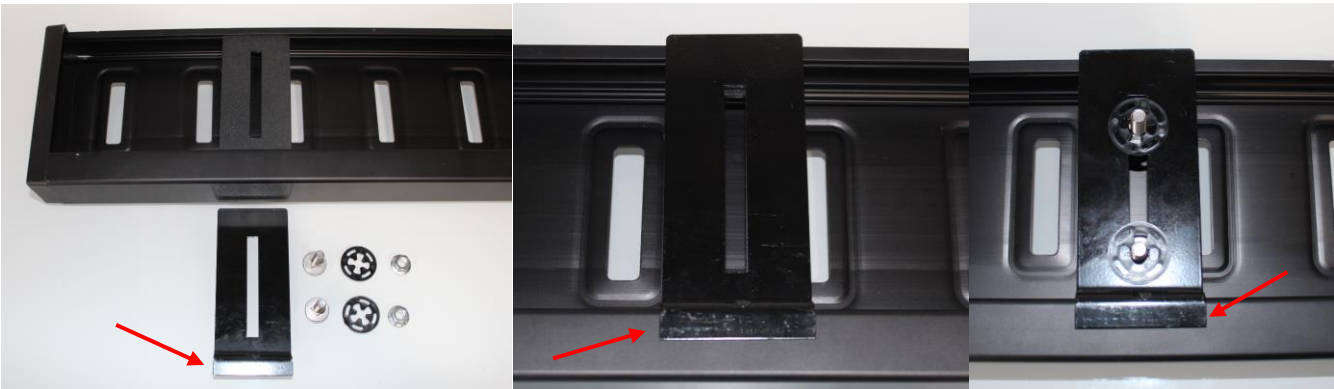


## ROF/RPD/ROB Running boards

Step 1: Place clamping plate on top of running board as shown below. Make sure clamping plate sits correctly on running board surface.

Step 2: Install carriage bolts and plastic retaining clips as shown below.

Step 3: Install and tighten hardware to 7 ft lbs.



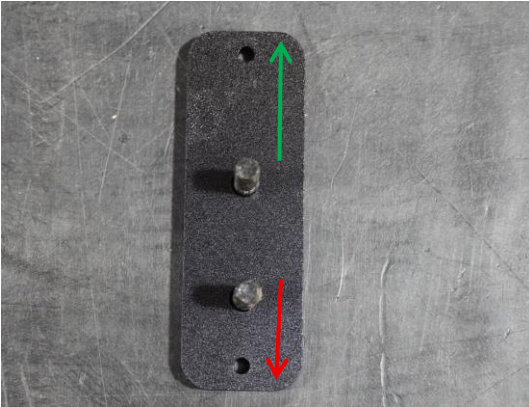
## RPT-R Running boards

Step 1: Place the RPT-R running board on top of the mounting brackets. If you are using the optional DRP covers, make sure they are installed first.

Step 2: Slide the RPT-R clamp plates from inside the running board to its location. Wide section out green arrow / Narrow section towards the vehicle red arrow

Step 3: Repeat procedure on all mounting brackets

Step 4: Install and tighten hardware to 7 ft lbs.



## Product Registration and Warranty Information



- Register your Romik products at <https://romik.com/productregistration>
- Warranty information at <http://www.romik.com/warranty>

## Cleaning and maintaining your Romik Running boards

Cleaning and maintaining your running boards is important, apply a light coat of a quality carnauba wax at least 2X per year. Wash often with mild soap and make sure to remove all soap residue. Many car automatic carwashes use a strong soap, make sure to use enough water to remove all residue.

For video instructions on how to clean your Romik products please click here <https://romik.com/cleaning>