



Installation Instructions

REV 3 01/23/20

Part No. **1426**

Product: Running Boards

Application:

Chev **Equinox 2010-2017**

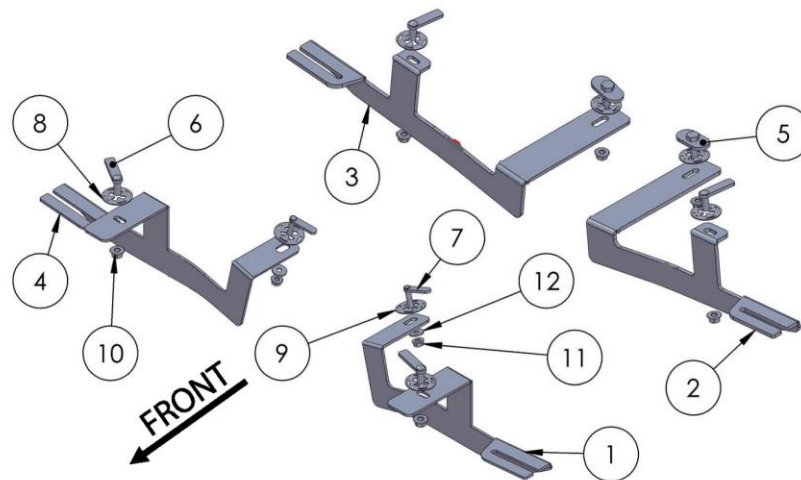
Level of Difficulty: **1** 2 3 4 5

Installation Time: 60 Min

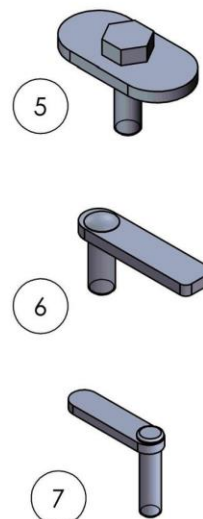
Hardware	Torque Specifications
M6 Bolt	3 ft-lbs.
M8 Bolt	7 ft-lbs.
M10 Bolt	16 ft-lbs.
M12 Bolt	28 ft-lbs.

ATTENTION: Use correct torque settings to avoid damaging the running boards and or mounting brackets. Failure to do so will void your warranty.

If you have any questions please contact our technical team at 1-866-717-6645



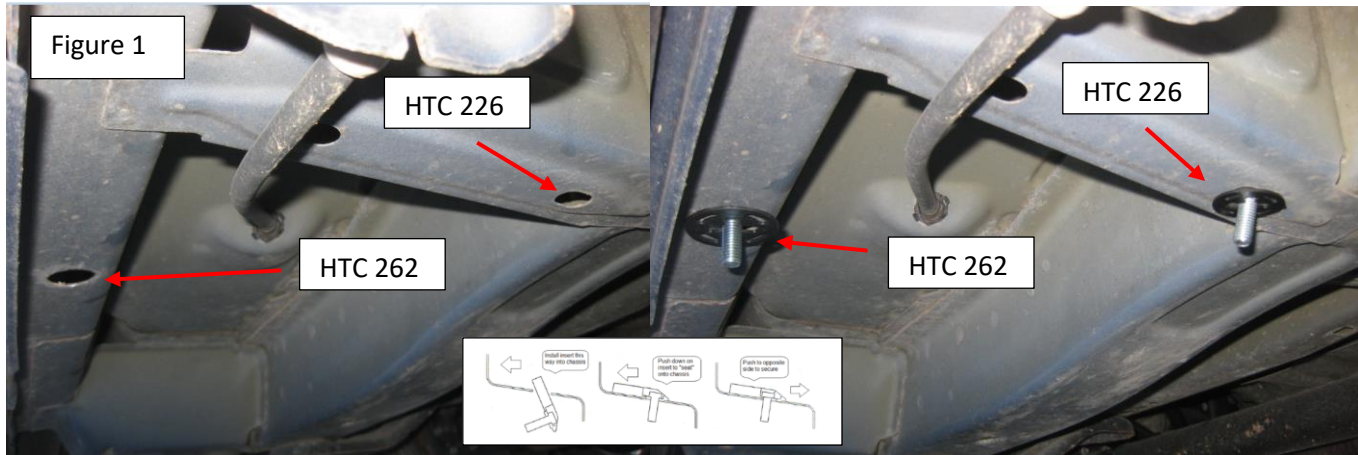
ITEM	PART NAME	QTY.
1	1426850F0 Driver	1
2	1426850B0 Driver	1
3	1426850B0 Passenger	1
4	1426850F0 Passenger	1
5	HTC 240 - M10X30 (5X34X60)	2
6	HTC 262 - M10X30 (5X15X60)	4
7	HTC 226 - M8X30 (4X10X37)	2
8	HTC 269 - CLIPS (M10)	6
9	HTC 271 - CLIPS (M8)	2
10	DIN 6923 Flange Nut M10	6
11	DIN 6923 Flange Nut M8	2
12	DIN 9021 Washer M10	2



Installation Instructions 1426 Bracket Kit

Step 1: Locate front mounting locations and hardware as per 1st page of this installation manual

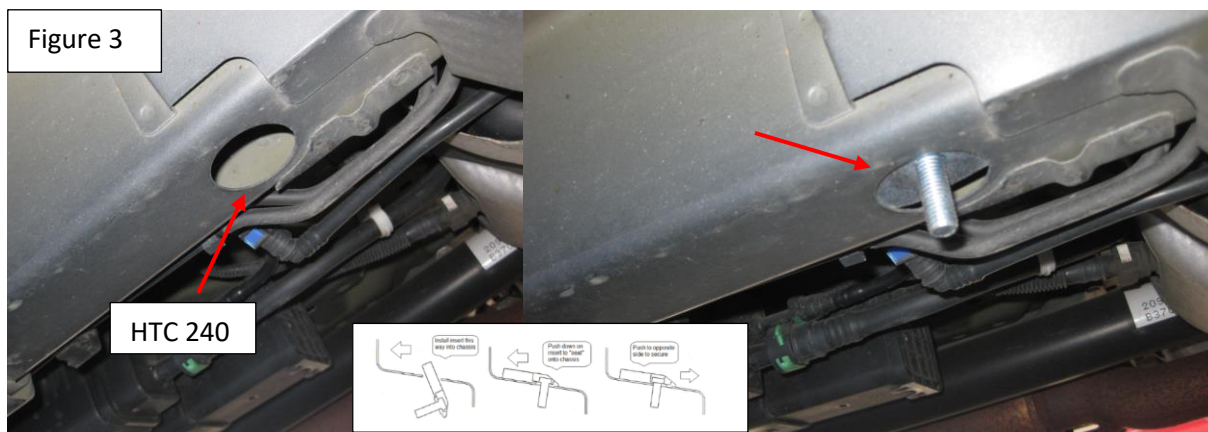
Step 2: Install provided hardware HTC 262 and HTC 226 as shown on Figure 1



Step 3: Install front bracket as shown on Figure 2. Do not tighten

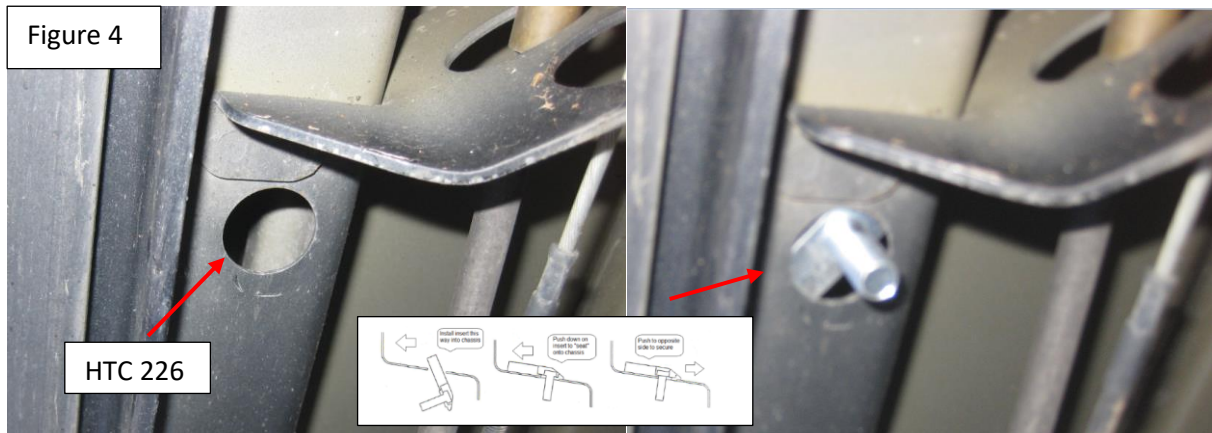


Step 4: Locate rear mounting area and install provided HTC 240 as shown Figure 3.



Installation Instructions 1426 Bracket Kit

Step 5: Locate rear mounting area and install provided HTC 240 as shown Figure 4



Step 6: Install rear bracket as shown Figure 5. Do not tighten

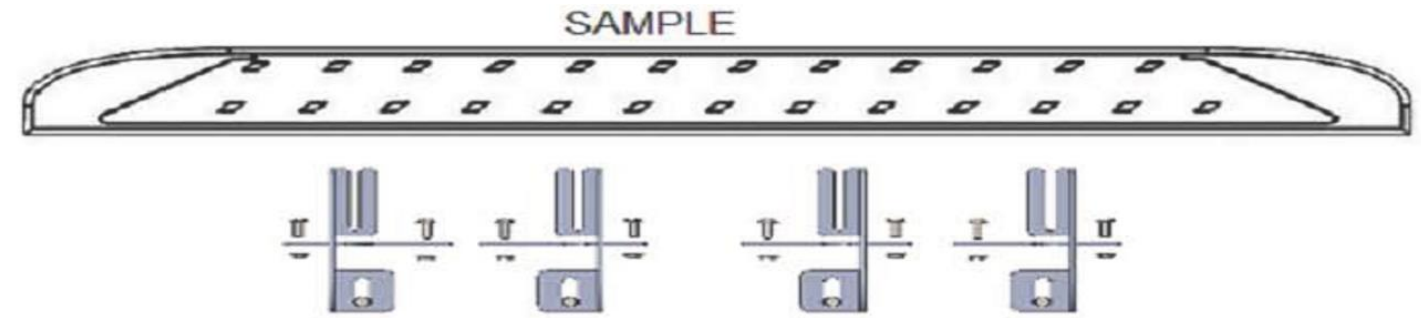


Step 7: Proceed to last page of this manual for running board install instructions and torque values

For Technical support please call our team at 1-866-717-6645 and one of our experts will assist you with this installation.

Thank you for choosing Romik.

Running Board Installation Instructions



RAL / RB2 / REC / RCV / RZR



ROB / ROF / RPD

- 1) Flip your Romik running boards onto a flat surface, make sure to place the running boards on a towel or cardboard in order to protect the surface Figure 1.
- 2) Loosen the M8 bolts on back of your running boards Figure 2. Depending on your model there will be either 6 or 8 bolts installed per side.
- 3) Once your brackets have been installed, place the running board onto the brackets as shown on Figure 3.
- 4) Adjust running boards, centering on vehicle. Hand tight M8 hardware on running boards.
- 5) Follow the torque procedures, torque M8 hardware to **7 ft-lbs** using a torque wrench.
- 6) Cleaning and maintaining your running boards is important, apply a light coat of a quality carnauba wax at least 2X per year. Wash often with mild soap and make sure to remove all soap residue. Many car automatic carwashes use a strong soap, make sure to use enough water to remove all residue.
- 7) Register your products at www.Romik.com/contact/productregistration
- 8) Warranty information at www.Romik.com/warranty