



Installation Instructions

REV 3 01/23/20

Part No. **5518**

Product: Running Boards

Application:

Chevy Captiva Sport 2013-2015

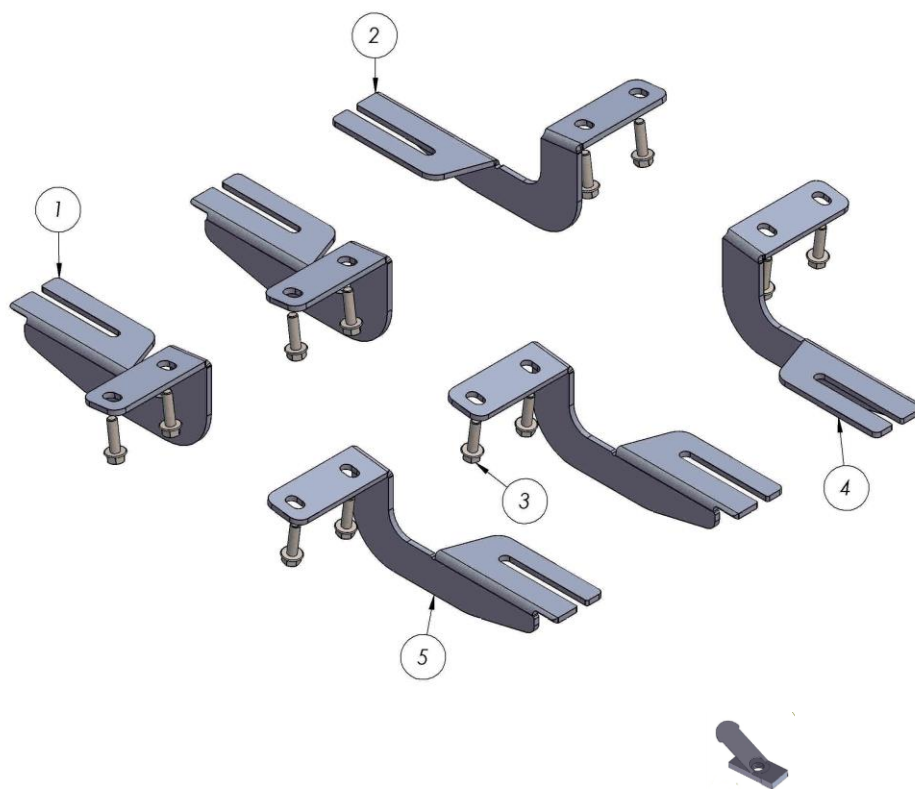
Level of Difficulty: **1** 2 3 4 5

Installation Time: 60 Min

Hardware	Torque Specifications
M6 Bolt	3 ft-lbs.
M8 Bolt	7 ft-lbs.
M10 Bolt	16 ft-lbs.
M12 Bolt	28 ft-lbs.

ATTENTION: Use correct torque settings to avoid damaging the running boards and or mounting brackets. Failure to do so will void your warranty.

If you have any questions please contact our technical team at 1-866-717-6645



Optional HTC 295 Qt. 12

ITEM/NO	PART NAME/PARÇA ADI	QTY/ADET
1	5518100850F0 PASSENGER	2
2	5518100850B0 PASSENGER	1
3	DIN 6921 FLANGE BOLT - M8 x 30	12
4	5518100850B0 DRIVER	1
5	5518100850F0 DRIVER	2

Installation Instructions 5518 Bracket Kit

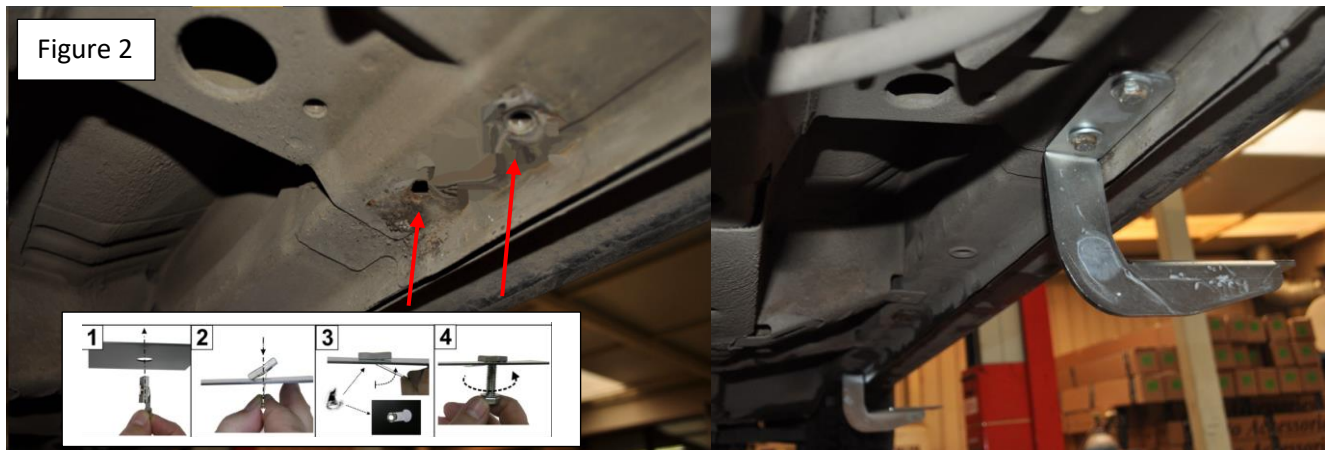
Step 1: Locate mounting locations and hardware as per 1st page of this installation manual. Note all locations are the same and all brackets are identical.

Step 2: Note: some vehicles have threaded holes, if your vehicle came with threaded holes simply install brackets onto vehicle using supplied M8 hardware Figure 1



Step 3: If your vehicle does not have threaded holes, you must “open” factory holes to 13mm either with a drill bit or a step drill bit. Figure 2

Step 4: Install provided HTC 295 as shown on Figure 2. Install brackets using supplied M8 hardware.



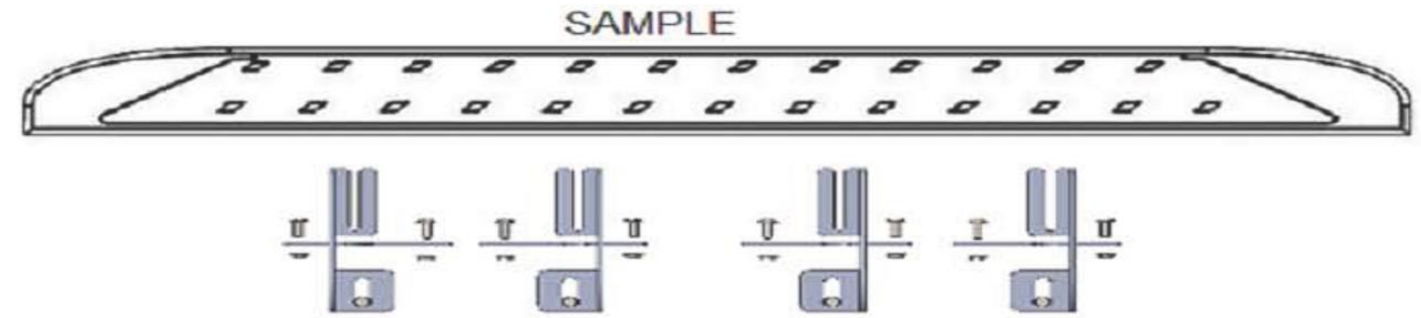
Step 5: Proceed and do the same on all 6 locations.

Step 6: Proceed to last page of this manual for running board install instructions and torque values

For Technical support please call our team at 1-866-717-6645 and one of our experts will assist you with this installation.

Thank you for choosing Romik.

Running Board Installation Instructions



RAL / RB2 / REC / RCV / RZR



ROB / ROF / RPD

- 1) Flip your Romik running boards onto a flat surface, make sure to place the running boards on a towel or cardboard in order to protect the surface Figure 1.
- 2) Loosen the M8 bolts on back of your running boards Figure 2. Depending on your model there will be either 6 or 8 bolts installed per side.
- 3) Once your brackets have been installed, place the running board onto the brackets as shown on Figure 3.
- 4) Adjust running boards, centering on vehicle. Hand tight M8 hardware on running boards.
- 5) Follow the torque procedures, torque M8 hardware to **7 ft-lbs** using a torque wrench.
- 6) Cleaning and maintaining your running boards is important, apply a light coat of a quality carnauba wax at least 2X per year. Wash often with mild soap and make sure to remove all soap residue. Many car automatic carwashes use a strong soap, make sure to use enough water to remove all residue.
- 7) Register your products at www.Romik.com/contact/productregistration
- 8) Warranty information at www.Romik.com/warranty