



Installation Instructions

REV 3 01/14/20

Part No. **5810**

Product: Running Boards

Application:

Cadillac SRX 2010 - 2016

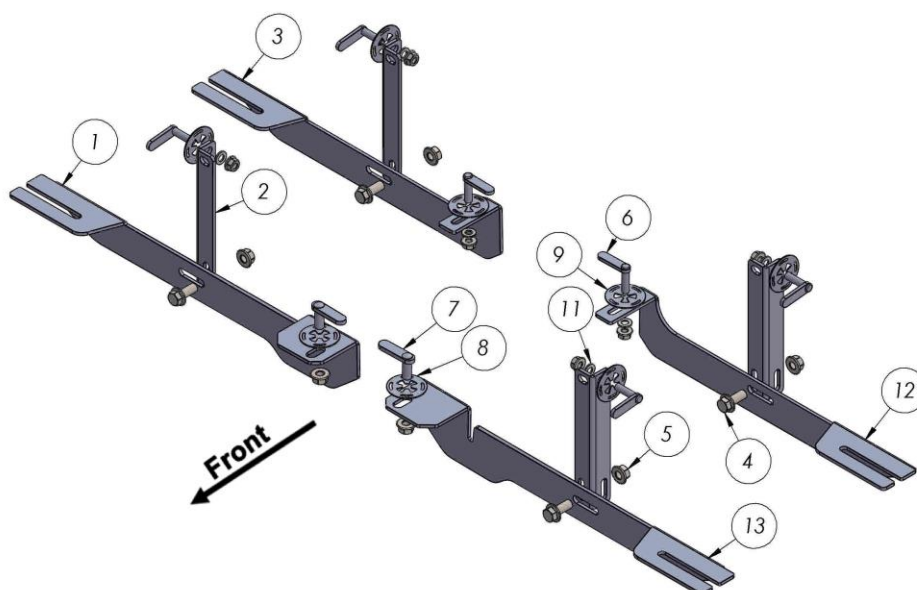
Level of Difficulty: **1** 2 3 4 5

Installation Time: 60 Min

Hardware	Torque Specifications
M6 Bolt	3 ft-lbs.
M8 Bolt	7 ft-lbs.
M10 Bolt	16 ft-lbs.
M12 Bolt	28 ft-lbs.

ATTENTION: Use correct torque settings to avoid damaging the running boards and or mounting brackets. Failure to do so will void your warranty.

If you have any questions please contact our technical team at 1-866-717-6645



ITEM	PART NAME	QTY
1	10061438-F0 PASSENGER	1
2	10061438-FB0 PASSENGER	4
3	10061438-B0 PASSENGER	1
4	DIN 6921 FLANGE BOLT - M10 x 25	4
5	DIN 6923 FLANGE NUT - M10	6
6	HTC 226 - M8X30 (4X10X37)	6
7	HTC 243 - M10x25(4x12x50)	2
8	HTC 269 - CLIPS (M10)	2
9	HTC 271 - CLIPS (M8)	6
10	DIN 6923 FLANGE NUT - M8	6
11	DIN 125 WASHER - M8	6
12	10061438-B0 DRIVER	1
13	10061438-F0 DRIVER	1



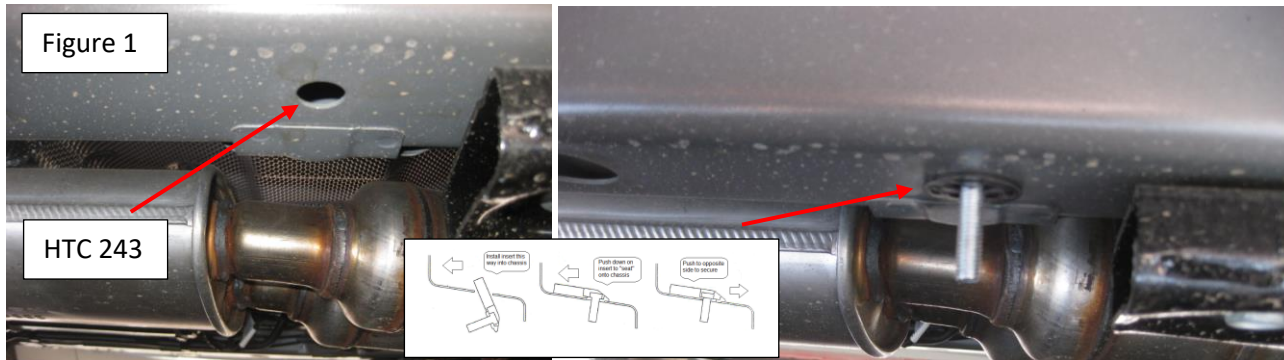
Installation Instructions 5810 Bracket Kit

Video Install Instructions



Step 1: Locate front mounting locations and hardware as per 1st page of this installation manual

Step 2: Install inner hardware provided HTC 243 as shown Figure 1

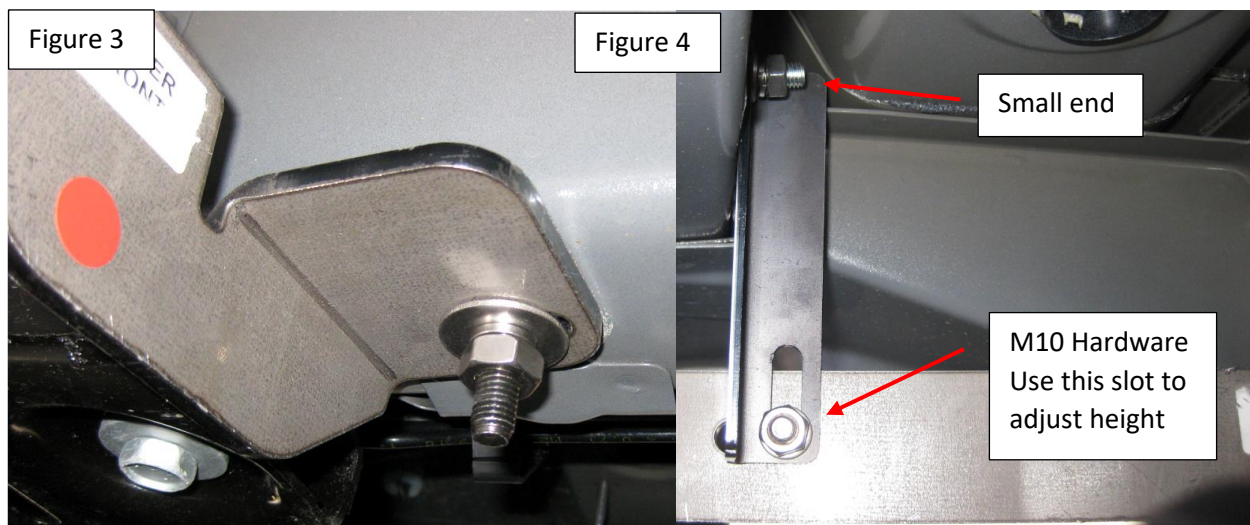


Step 3: Locate extra support mounting points and install supplied HTC 226 as shown Figure 2



Step 4: Install main bracket Figure 3. Do not tighten

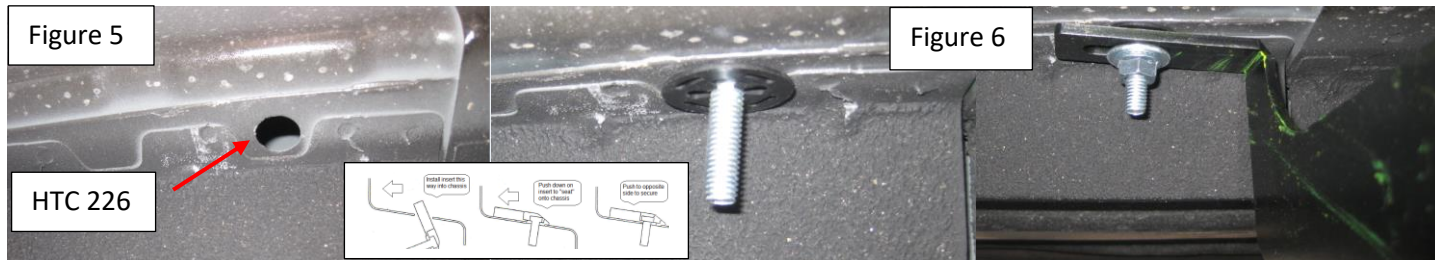
Step 5: Install extra support bracket with adjusting slot facing down, use adjusting slot to move step up or down connect with M10 hardware Figure 4. Do not tighten until steps are installed



Installation Instructions 5810 Bracket Kit

Step 6: Locate rear bracket mounting area install provided HTC 226 as shown on Figure 5

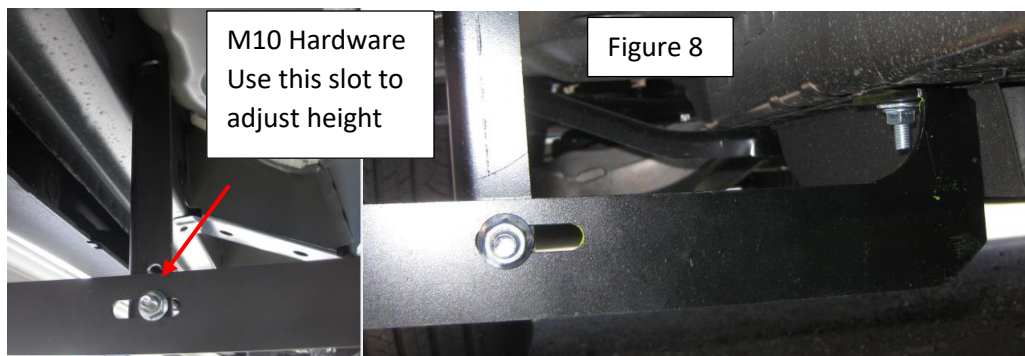
Step 7: Install rear main bracket as shown on Figure 6. Do not tighten



Step 8: Locate extra support mounting points and install supplied HTC 226 as shown Figure 7. Install extra support with adjusting slot on the bottom portion and small end on top.



Step 9: Install extra support bracket with adjusting slot facing down, use adjusting slot to move step up or down connect with M10 hardware Figure 8. Do not tighten until steps are installed

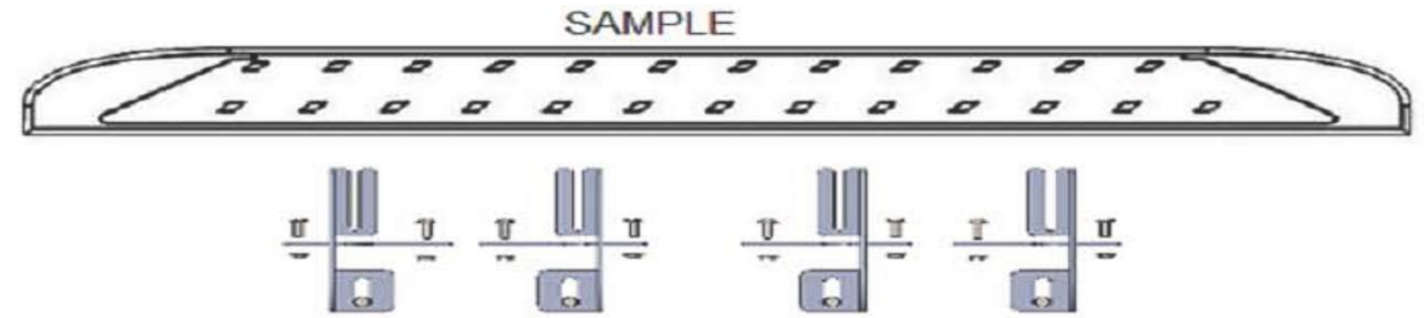


Step 10: Proceed to last page of this manual for running board install instructions and torque values

For Technical support please call our team at 1-866-717-6645 and one of our experts will assist you with this installation.

Thank you for choosing Romik.

Running Board Installation Instructions



RAL / RB2 / REC / RCV / RZR



ROB / ROF / RPD

- 1) Flip your Romik running boards onto a flat surface, make sure to place the running boards on a towel or cardboard in order to protect the surface Figure 1.
- 2) Loosen the M8 bolts on back of your running boards Figure 2. Depending on your model there will be either 6 or 8 bolts installed per side.
- 3) Once your brackets have been installed, place the running board onto the brackets as shown on Figure 3.
- 4) Adjust running boards, centering on vehicle. Hand tight M8 hardware on running boards.
- 5) Follow the torque procedures, torque M8 hardware to **7 ft-lbs** using a torque wrench.
- 6) Cleaning and maintaining your running boards is important, apply a light coat of a quality carnauba wax at least 2X per year. Wash often with mild soap and make sure to remove all soap residue. Many car automatic carwashes use a strong soap, make sure to use enough water to remove all residue.
- 7) Register your products at www.Romik.com/contact/productregistration
- 8) Warranty information at www.Romik.com/warranty