



Installation Instructions

REV 3 01/13/20

Part No. **1420**

Product: Running Boards

Application:

Buick Enclave 2008-2017

Chevrolet Traverse 2008-2017

GMC Acadia 2008-2016

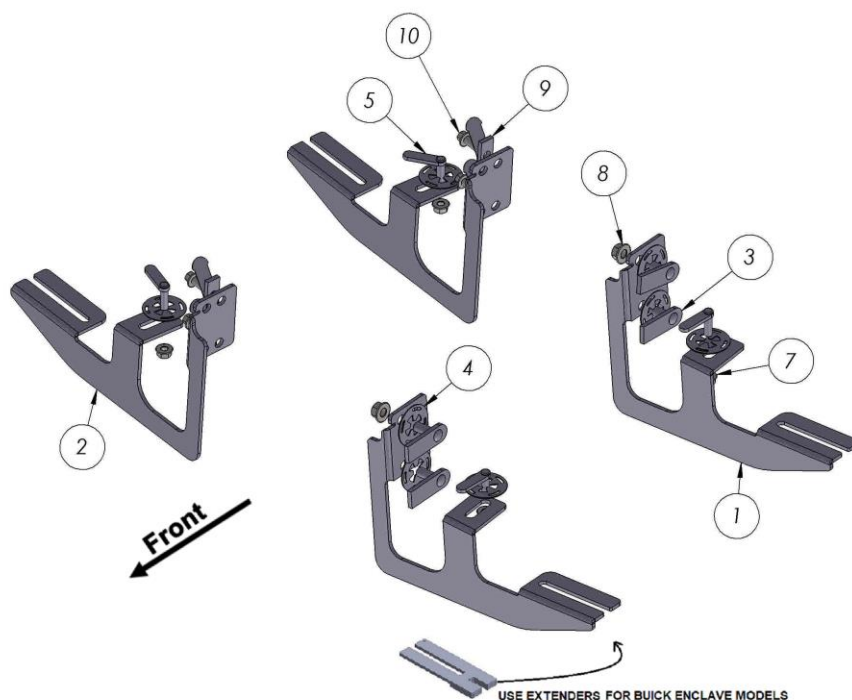
Level of Difficulty: **1** 2 3 4 5

Installation Time: 60 Min

Hardware	Torque Specifications
M6 Bolt	3 ft-lbs.
M8 Bolt	7 ft-lbs.
M10 Bolt	16 ft-lbs.
M12 Bolt	28 ft-lbs.

ATTENTION: Use correct torque settings to avoid damaging the running boards and or mounting brackets. Failure to do so will void your warranty.

If you have any questions please contact our technical team at 1-866-717-6645



ITEM	PART NAME	QTY
1	1420850F0B0 DRIVER	2
2	1420850F0B0 PASSENGER	2
3	HTC 230 - M10x25(5x20x60)	4
4	HTC 269 CLIPS (M10)	4
5	HTC 226 - M8X30 (4X10X37)	4
6	HTC 271 CLIPS (M8)	4
7	DIN 6923 FLANGE NUT M8	4
8	DIN 6923 FLANGE NUT M10	4
9	HTC 295 M8 SPECIAL NUT	4
10	DIN 6921 FLANGE BOLT M8 x 25	4

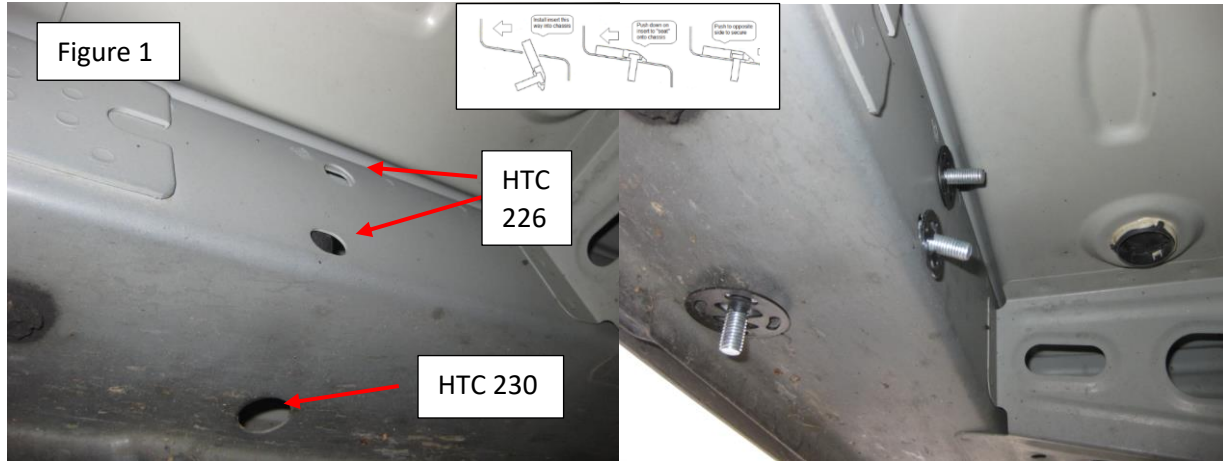




Installation Instructions 1420 Bracket Kit

Step 1: Locate front mounting locations and hardware as per 1st page of this installation manual

Install HTC 226 on two upper holes and HTC 230 on lower hole Figure 1



Step 2: Install front bracket as shown on Figure 2. Do not tighten



Step 3: Locate rear mounting locations, clean holes with a pick or screwdriver to clear foam Figure 3.

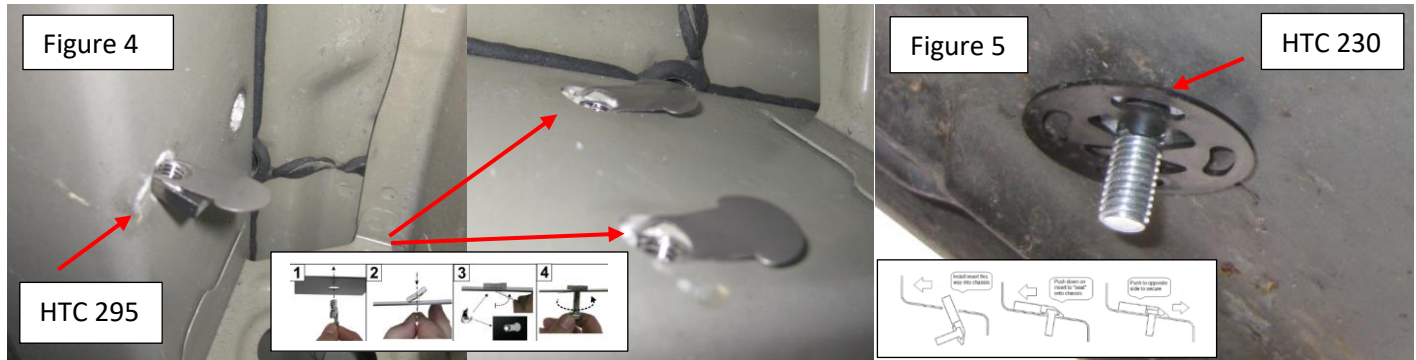




Installation Instructions 1420 Bracket Kit

Step 4: Install HTC 295 as shown on Figure 4

Step 5: Install HTC 230 as shown on Figure 5



Step 6: Install rear bracket as shown on Figure 6. Do not tighten



Step 7: Buick Enclave only. Install supplied Extenders see below

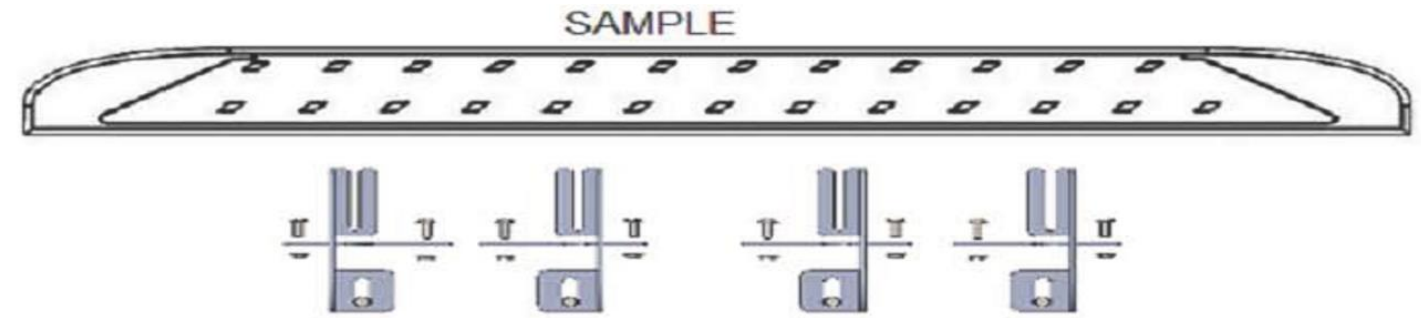


Step 8: Proceed to last page of this manual for running board install instructions and torque values

For Technical support please call our team at 1-866-717-6645 and one of our experts will assist you with this installation.

Thank you for choosing Romik.

Running Board Installation Instructions



RAL / RB2 / REC / RCV / RZR



ROB / ROF / RPD

- 1) Flip your Romik running boards onto a flat surface, make sure to place the running boards on a towel or cardboard in order to protect the surface Figure 1.
- 2) Loosen the M8 bolts on back of your running boards Figure 2. Depending on your model there will be either 6 or 8 bolts installed per side.
- 3) Once your brackets have been installed, place the running board onto the brackets as shown on Figure 3.
- 4) Adjust running boards, centering on vehicle. Hand tight M8 hardware on running boards.
- 5) Follow the torque procedures, torque M8 hardware to **7 ft-lbs** using a torque wrench.
- 6) Cleaning and maintaining your running boards is important, apply a light coat of a quality carnauba wax at least 2X per year. Wash often with mild soap and make sure to remove all soap residue. Many car automatic carwashes use a strong soap, make sure to use enough water to remove all residue.
- 7) Register your products at www.Romik.com/contact/productregistration
- 8) Warranty information at www.Romik.com/warranty