



Installation Instructions

REV 3 01/08/2020

Part No. **1214**

Product: Running Boards

Application: **BMW X5**

2014 - 2018

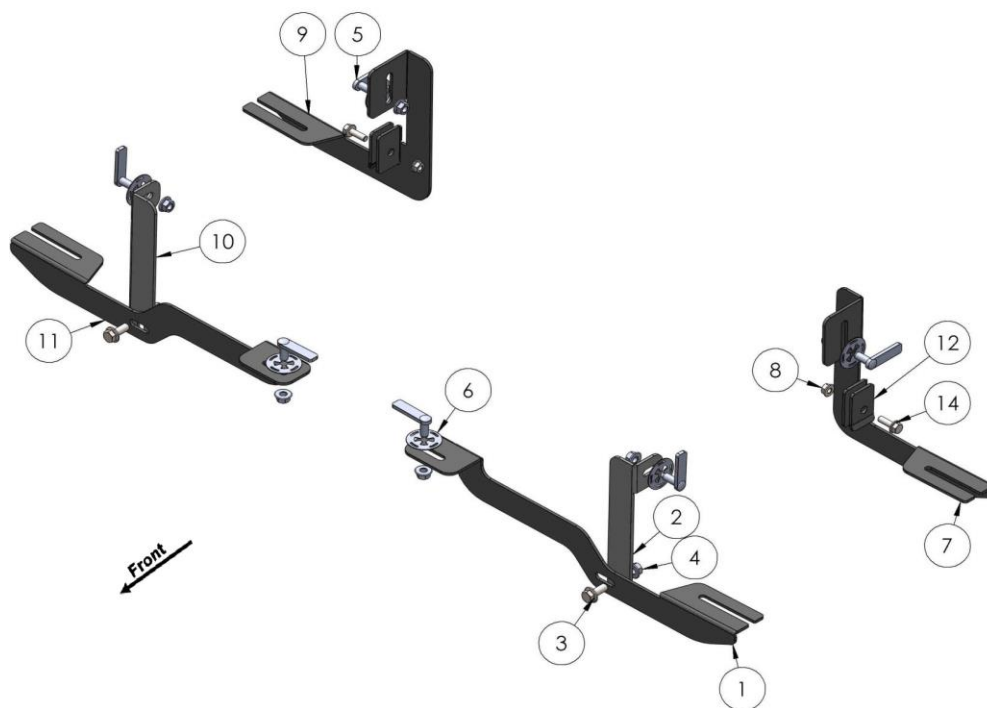
Level of Difficulty: 1 2 3 **4** 5

Installation Time: 120 Min

Hardware	Torque Specifications
M6 Bolt	3 ft-lbs.
M8 Bolt	7 ft-lbs.
M10 Bolt	16 ft-lbs.
M12 Bolt	28 ft-lbs.

ATTENTION: Use correct torque settings to avoid damaging the running boards and or mounting brackets. Failure to do so will void your warranty.

If you have any questions please contact our technical team at 1-866-717-6645



ITEM	PART NUMBER	QTY
1	1214850F0 DRIVER	1
2	1214850F1 DRIVER	1
3	DIN 6921 BOLT - M10 x 25	2
4	DIN 6923 FLANGE NUT - M10	8
5	HTC 262 - M10x30(5x15x60)	6
6	HTC 269 - CLIPS (M10)	6
7	1214850B0 DRIVER	1
8	DIN 6923 FLANGE NUT - M8	2
9	1214850B0 PASSENGER	1
10	1214850F1 PASSENGER	1
11	1214850F0 PASSENGER	1
12	1214850B1 DRIVER	1
13	1214850 PASSENGER	1
14	DIN 6921 BOLT - M8 x 25	2



Installation Instructions 1214 Bracket

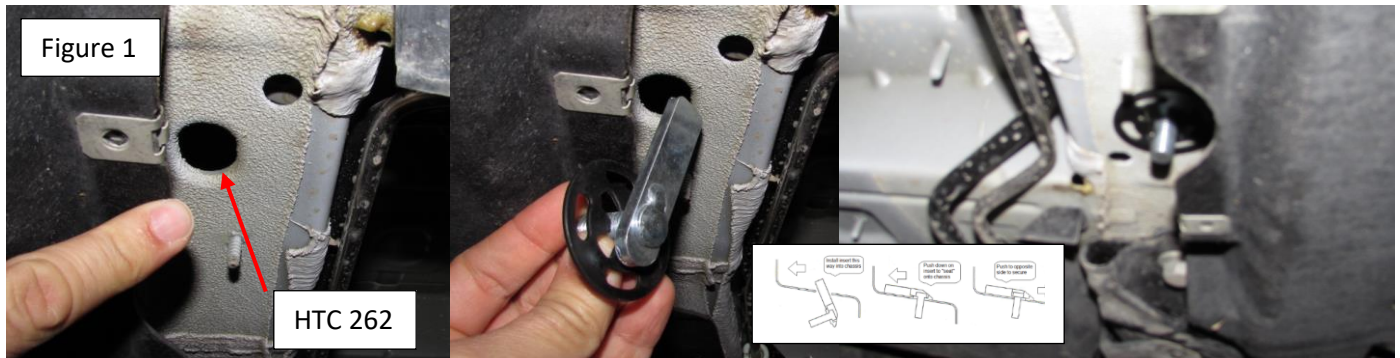
Video Installation Instruction:



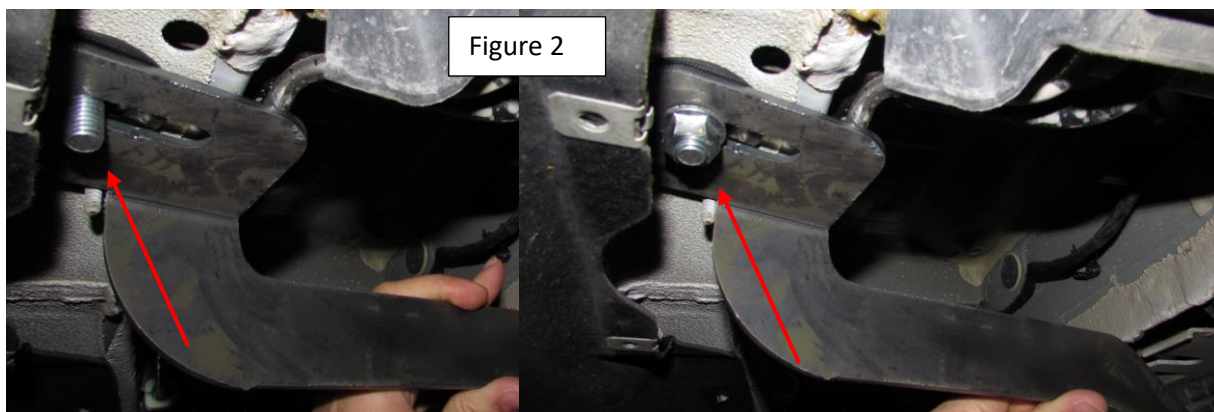
Step 1: Remove plastic panels under vehicle, do not discard hardware as it will be re-used.

Step 2: Locate front passenger mounting locations and hardware as per 1st page of this installation manual

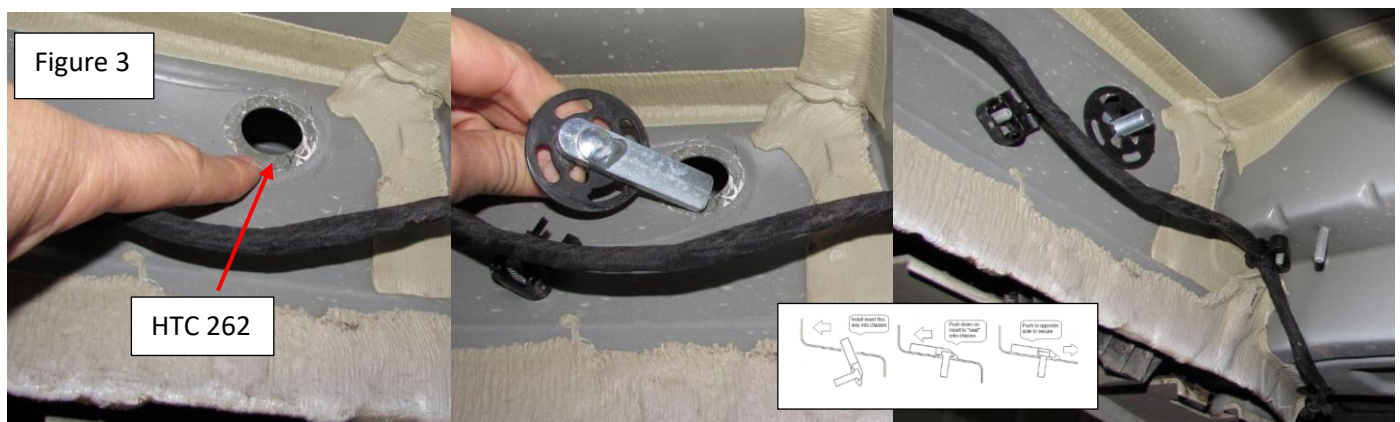
Step 3: Remove factory rubber plug if equipped and install HTC 262 Figure 1.



Step 4: Install front bracket as shown on Figure 2. Do not tighten.

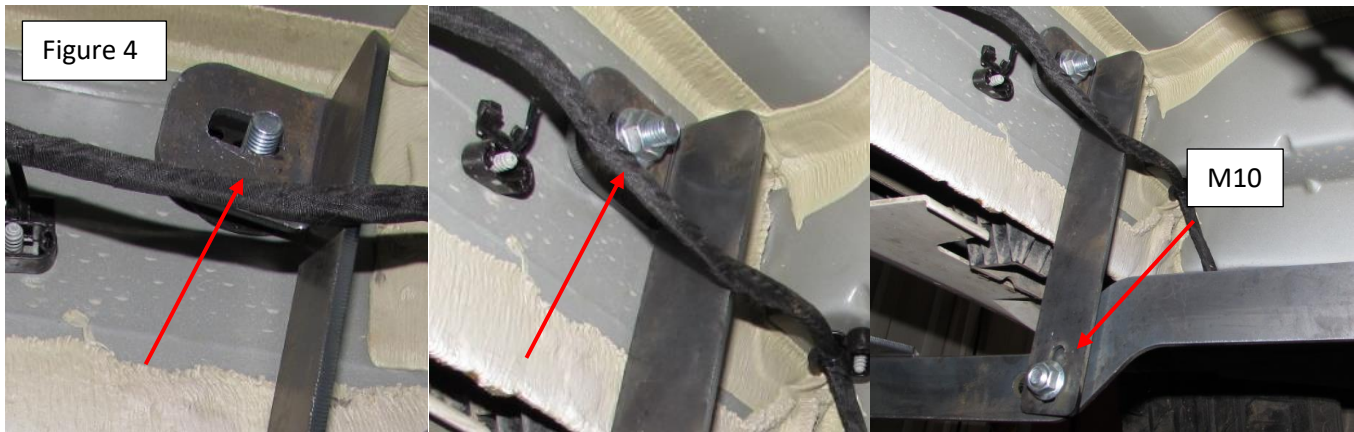


Step 5: Remove factory rubber plug if equipped and install HTC 262 Figure 3.

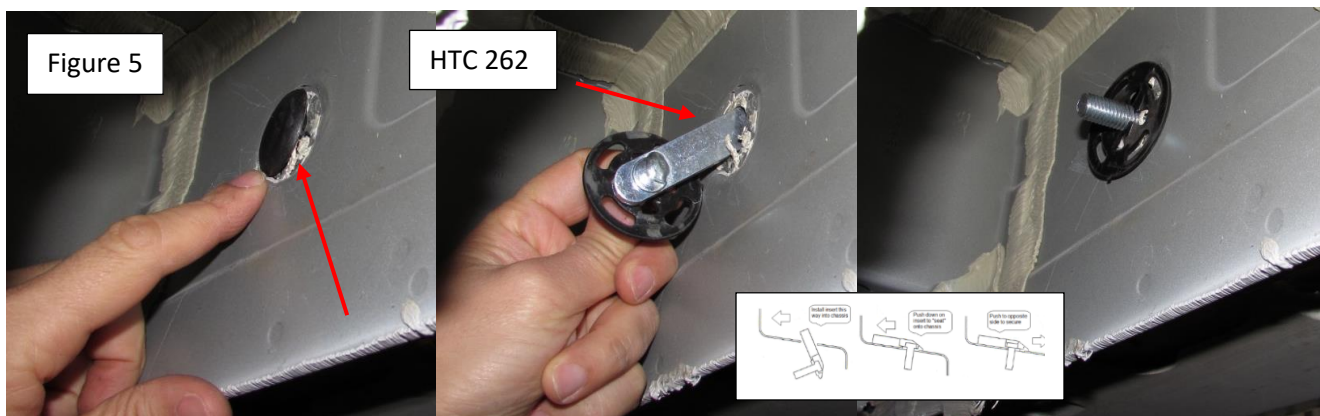


Installation Instructions 1214 Bracket

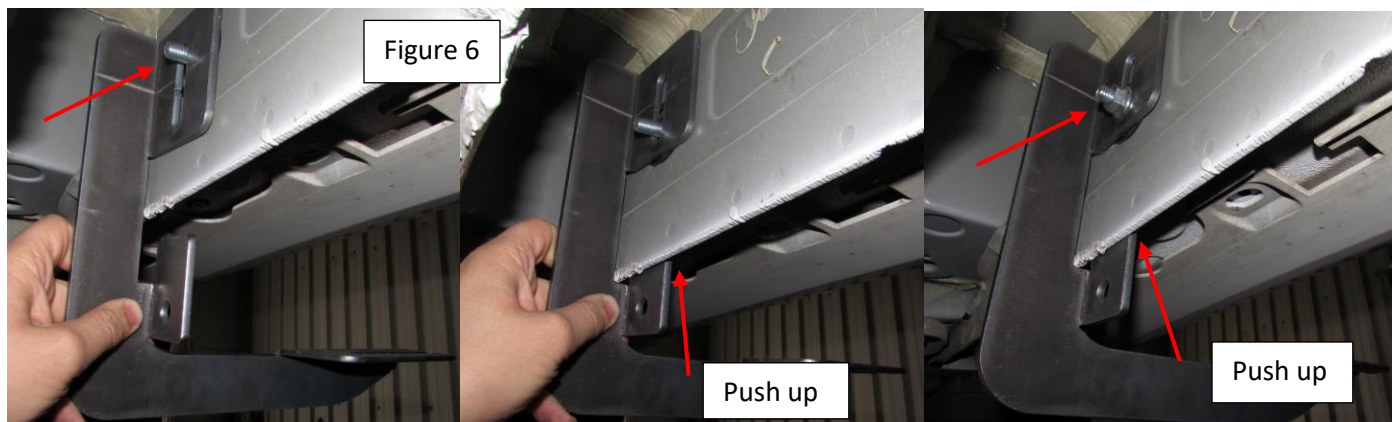
Step 6: Install extra support bracket as shown on Figure 4 Do not tighten. Attach Extra support bracket to main bracket with supplied M10 hardware. Do not tighten



Step 7: Locate rear bracket location and hardware Figure 5. Remove rubber plug and install HTC 262

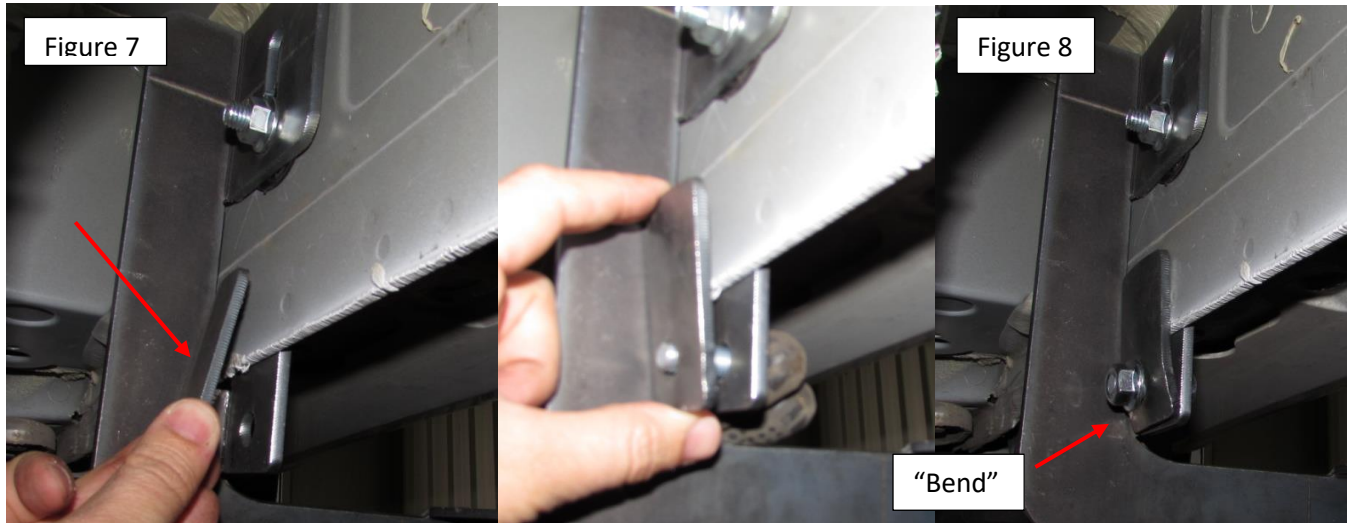


Step 8: Install rear bracket as shown on figure 6 once installed push bracket up so that bottom portion is nestled in front of the pinch weld. Do not tighten



Installation Instructions 1214 Bracket

Step 9: Install rear bracket pinch weld plate as shown on Figure 7. Make sure to install with “bend” putting pressure on main bracket Figure 8. Do not tighten



Step 9: Proceed to last page of this manual for running board install instructions and torque values

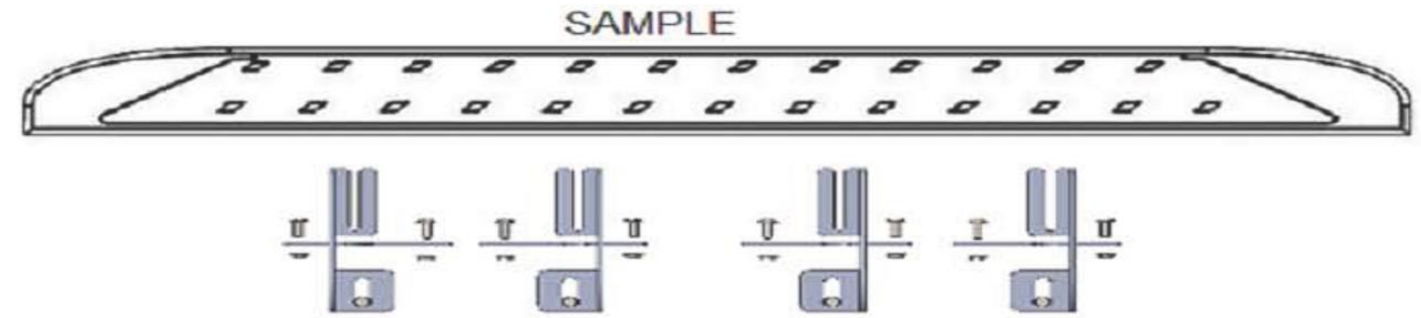
Step 10: After securing running boards proceed to trim plastic panels as needed.



For Technical support please call our team at 1-866-717-6645 and one of our experts will assist you with this installation

Thank you for choosing Romik.

Running Board Installation Instructions



RAL / RB2 / REC / RCV / RZR



ROB / ROF / RPD

- 1) Flip your Romik running boards onto a flat surface, make sure to place the running boards on a towel or cardboard in order to protect the surface Figure 1.
- 2) Loosen the M8 bolts on back of your running boards Figure 2. Depending on your model there will be either 6 or 8 bolts installed per side.
- 3) Once your brackets have been installed, place the running board onto the brackets as shown on Figure 3.
- 4) Adjust running boards, centering on vehicle. Hand tight M8 hardware on running boards.
- 5) Follow the torque procedures, torque M8 hardware to **7 ft-lbs** using a torque wrench.
- 6) Cleaning and maintaining your running boards is important, apply a light coat of a quality carnauba wax at least 2X per year. Wash often with mild soap and make sure to remove all soap residue. Many car automatic carwashes use a strong soap, make sure to use enough water to remove all residue.
- 7) Register your products at www.Romik.com/contact/productregistration
- 8) Warranty information at www.Romik.com/warranty