



Installation Instructions

REV 3 01/08/20

Part No. **1213**

Product: Running Boards

Application: **BMW X3**

2012 - 2017

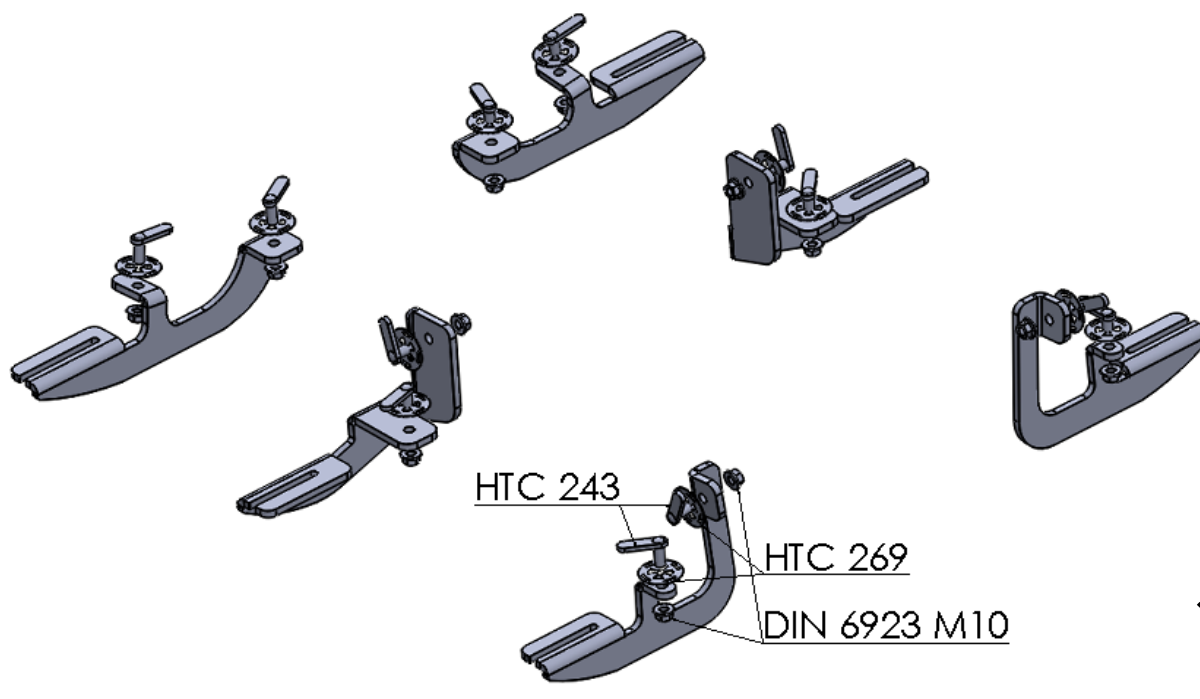
Level of Difficulty: 1 2 **3** 4 5

Installation Time: 90 Min

Hardware	Torque Specifications
M6 Bolt	3 ft-lbs.
M8 Bolt	7 ft-lbs.
M10 Bolt	16 ft-lbs.
M12 Bolt	28 ft-lbs.

ATTENTION: Use correct torque settings to avoid damaging the running boards and or mounting brackets. Failure to do so will void your warranty.

If you have any questions please contact our technical team at 1-866-717-6645



Item	Part Number	QT	Image
1	HTC 243 M10X25 (5x13x50)	12	
2	HTC 269 Klips M10	12	
3	Flange Nut M10 DIN 6923	12	
4	HTC 295 M8 Special Nut	4	
5	M8 x25x25 DIN 6921	4	BOLT

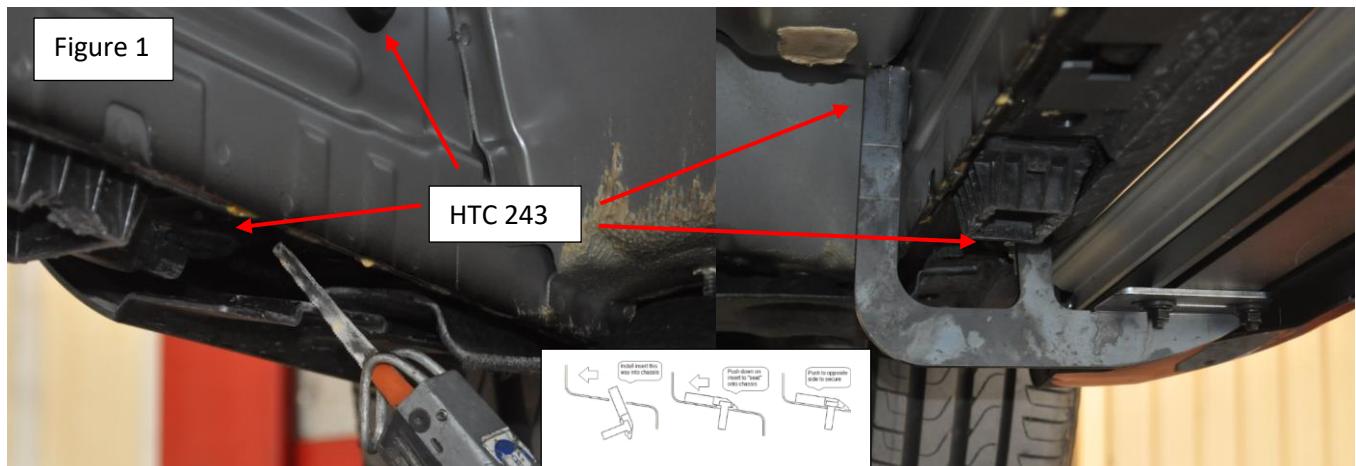
Installation Instructions 1213 BMW X3 2012-2017

Step 1: Remove plastic panels under vehicle, do not discard hardware as it will be re-used. This vehicle requires plastic trimming.

Step 2: Locate front mounting locations and hardware as per 1st page of this installation manual

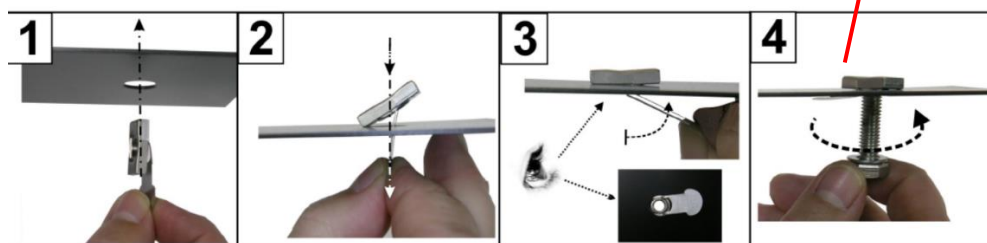
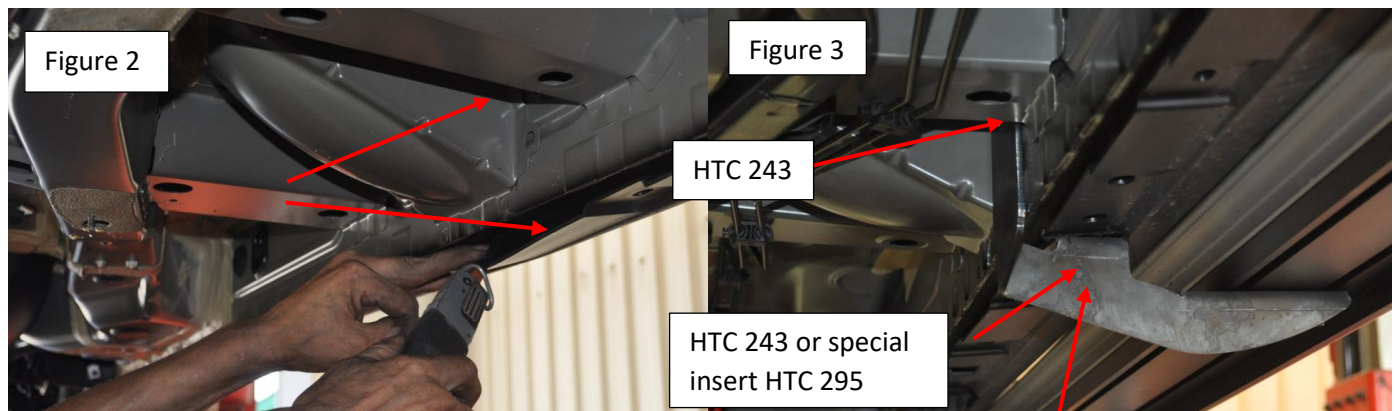
Step 3: Trim plastic back to expose front mounting holes, remove plastic rubber plugs as shown on Figure 1

Step 4: Install HTC 243 Figure 1 and attach front bracket as shown below. Do not tighten



Step 5: Trim plastic back to expose Middle mounting holes Figure 2, Note on some models the holes are not drilled from the factory and you will have to drill a 13mm hole and install special inserts

Step 6: Install middle bracket with provided hardware Figure 3. Do not tighten



Installation Instructions 1213 BMW X3 2012-2017

Step 7: Locate rear bracket location and hardware Trim plastic as necessary, install provided HTC 243

Figure 4 install rear bracket. Do not tighten.



Step 8: Proceed to last page of this manual for running board install instructions and torque values.

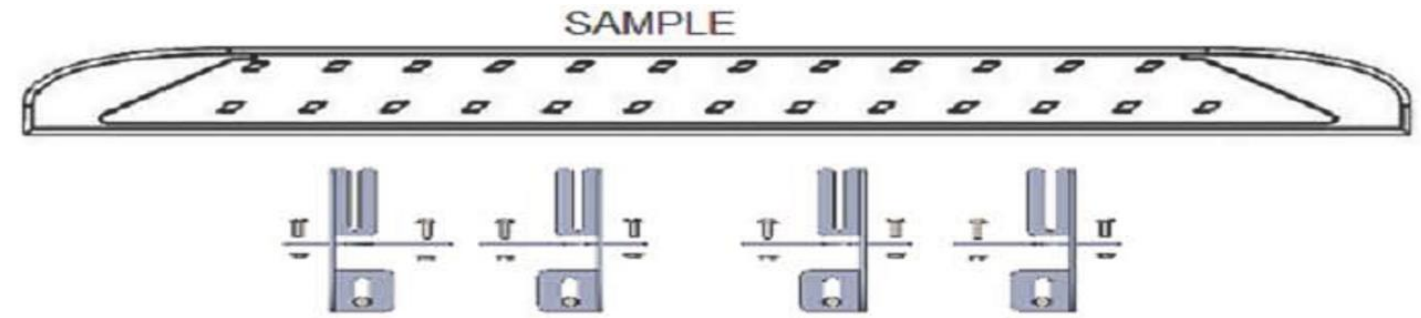
Step 9: Reinstall plastic panels and trim as necessary.

For Technical

support please call our team at 1-866-717-6645 and one of our experts will assist you with this installation

Thank you for choosing Romik.

Running Board Installation Instructions



RAL / RB2 / REC / RCV / RZR



ROB / ROF / RPD

- 1) Flip your Romik running boards onto a flat surface, make sure to place the running boards on a towel or cardboard in order to protect the surface Figure 1.
- 2) Loosen the M8 bolts on back of your running boards Figure 2. Depending on your model there will be either 6 or 8 bolts installed per side.
- 3) Once your brackets have been installed, place the running board onto the brackets as shown on Figure 3.
- 4) Adjust running boards, centering on vehicle. Hand tight M8 hardware on running boards.
- 5) Follow the torque procedures, torque M8 hardware to **7 ft-lbs** using a torque wrench.
- 6) Cleaning and maintaining your running boards is important, apply a light coat of a quality carnauba wax at least 2X per year. Wash often with mild soap and make sure to remove all soap residue. Many car automatic carwashes use a strong soap, make sure to use enough water to remove all residue.
- 7) Register your products at www.Romik.com/contact/productregistration
- 8) Warranty information at www.Romik.com/warranty