

ROMIK

Installation Instructions

Part No. **2614**

Product: Running Boards

Application: **Jeep Grand Cherokee 2011 - 2022**

Dodge Durango 2011 – Present

Level of Difficulty: 1 2 **3** 4 5

Installation Time: 60 Min.

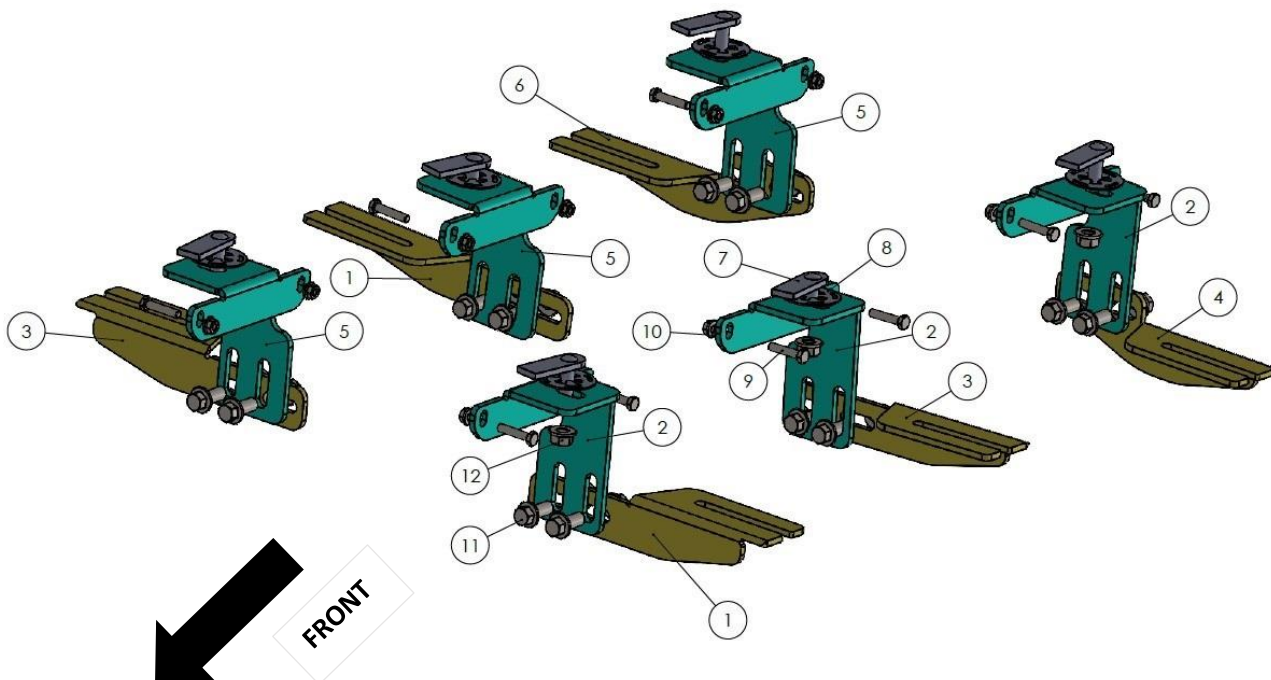
REV 5 12/15/23

Hardware	Torque Aluminum	Torque Steel to Steel
M6 Bolt	3 ft-lbs.	14 ft-lbs.
M8 Bolt	7 ft-lbs.	35 ft-lbs.
M10 Bolt	16 ft-lbs.	64 ft-lbs.
M12 Bolt	28 ft-lbs.	112 ft-lbs.

ATTENTION: Use correct torque settings to avoid damaging the running boards and or mounting brackets. Failure to do so will void your warranty. If you have any questions, please contact our technical team at 1-866-717-6645

Attention: Please make sure that you have the latest instructions from *Romik.com*

QR Scan



NOTE: For Grand Cherokee Summit-RT-SRT-Limited X – Dodge Durango GT-RT-SRT see next page

ROMIK

Installation Instructions

Part No. **2614**

Product: Running Boards

Application: **Jeep Grand Cherokee 2011 - 2022**

Dodge Durango 2011 – Present

Level of Difficulty: 1 2 **3** 4 5

Installation Time: 60 Min.

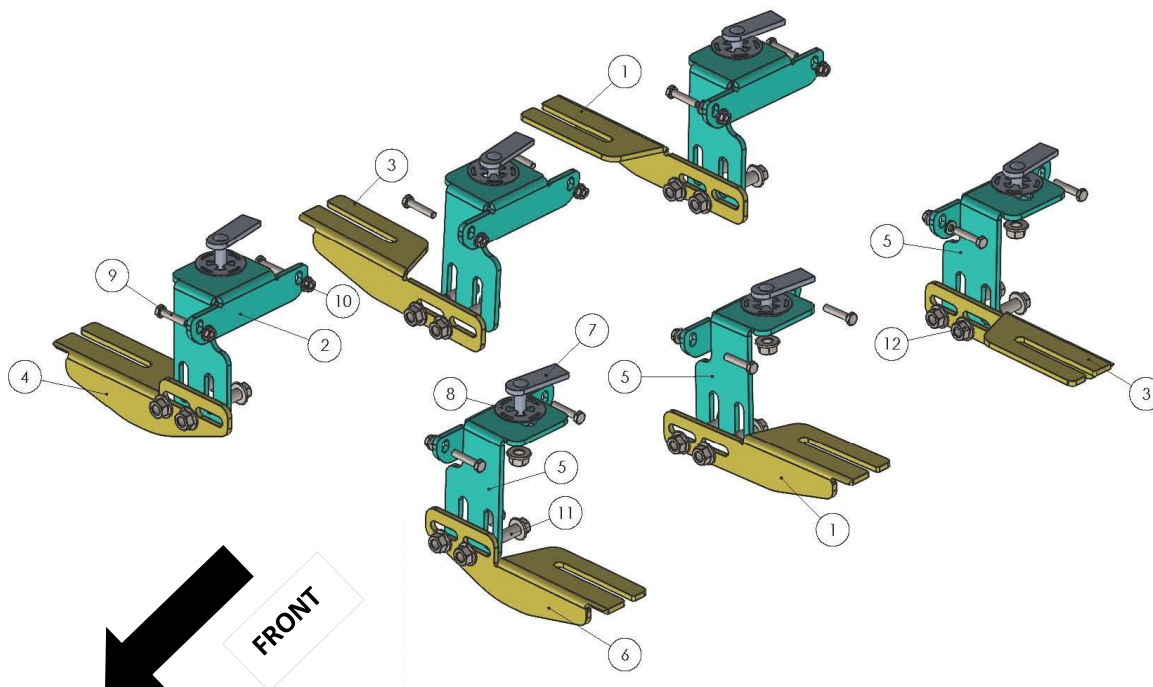
REV 5 12/15/23

Hardware	Torque Aluminum	Torque Steel to Steel
M6 Bolt	3 ft-lbs.	14 ft-lbs.
M8 Bolt	7 ft-lbs.	35 ft-lbs.
M10 Bolt	16 ft-lbs.	64 ft-lbs.
M12 Bolt	28 ft-lbs.	112 ft-lbs.

ATTENTION: Use correct torque settings to avoid damaging the running boards and or mounting brackets. Failure to do so will void your warranty. If you have any questions, please contact our technical team at 1-866-717-6645

Attention: Please make sure that you have the latest instructions from **Romik.com**

QR Scan



NOTE: For Grand Cherokee Summit-RT-SRT-Limited X – Dodge Durango GT-RT-SRT use this page.

2614

1



BRACKET-1
2 x QTY

2



BRACKET-2
3 x QTY

3



BRACKET-3
2 x QTY

4



BRACKET-4
1 x QTY

5



BRACKET-5
3 x QTY

6



BRACKET-6
1 x QTY

HARDWARE

7



HTC 230 – M10x25
(5x20x60)
6x

8



HTC 269 –
CLIPS (M10)
6x

9



M6x20
FLANGE BOLT
12x

10



M6
FLANGE NUT
12x

11



M10x25
FLANGE BOLT
12x

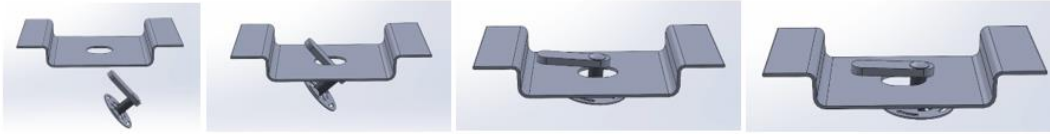
12



M10
FLANGE NUT
18x

Installation Instructions 2614 Bracket Kit

Important Install Tip: When installing Romik HTC inserts follow the sequence below. Make sure the HTC is seated correctly and do not use power tools as this will only spin the insert and possibly damage it. Test by tugging on it before installing bracket. Blue loctite is highly recommended on all metal parts.



ATTENTION: For GC Summit and other specialty vehicles with extra wide cladding see page 2

NOTE: Jeep Grand Cherokee models visible gap due to body shape of the vehicle, if not sure stop before installing and visit www.Romik.com to review images

NOTE: If your vehicle is equipped with a factory wire loom cover as shown below. Loosen the cover and install the M6 hardware in reverse or direction of red arrow.



Step 1: Locate front mounting locations and hardware as per 1st page of this installation manual Dodge Durango models and all Jeep GC models. **For Summit-GT-RT models please pay attention to step 4**

Step 2: Remove plug #2 starting from front to back see Figure 1



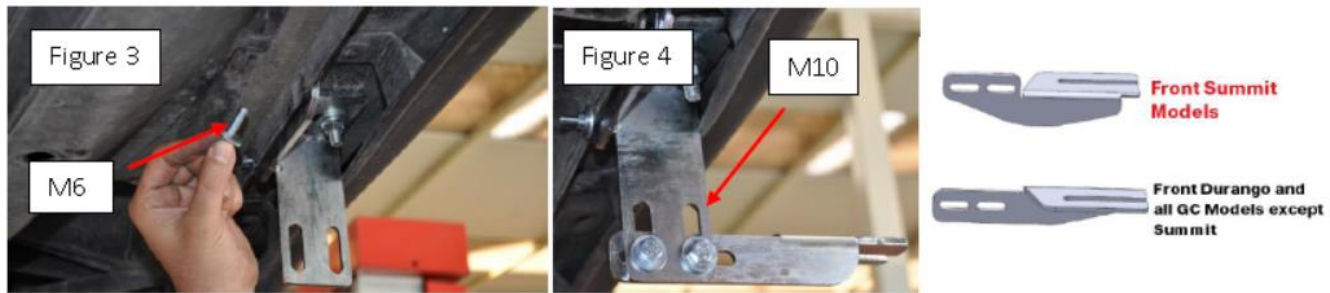
Step 3: Install provided HTC 230 as shown Figure 2



Step 4: Install bracket top part using supplied M6 hardware Figure 3.

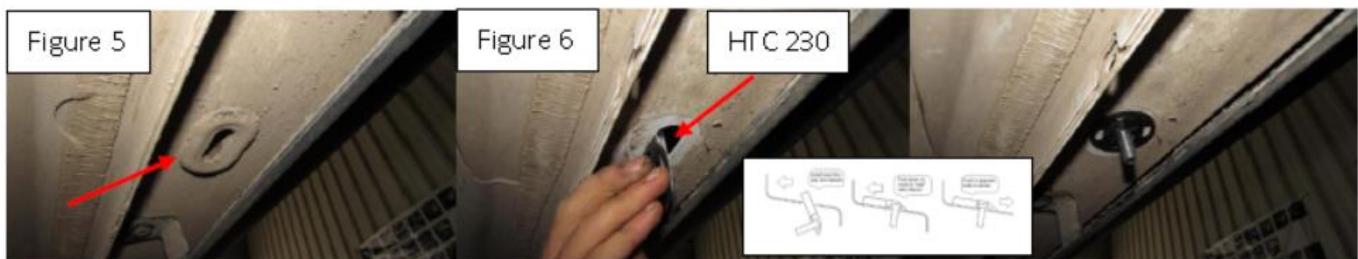
Installation Instructions 2614 Bracket Kit

Step 5: Install bracket lower portion using supplied M10 hardware Figure 4. **Note for Summit-RT-GT models front bracket position is very important.**



Step 6: Locate middle bracket install and remove rubber plug #3 Figure 5.

Step 7: Install supplied HTC 230 as shown Figure 6.



Step 8: Install bracket top part using supplied M6 hardware Figure 7.

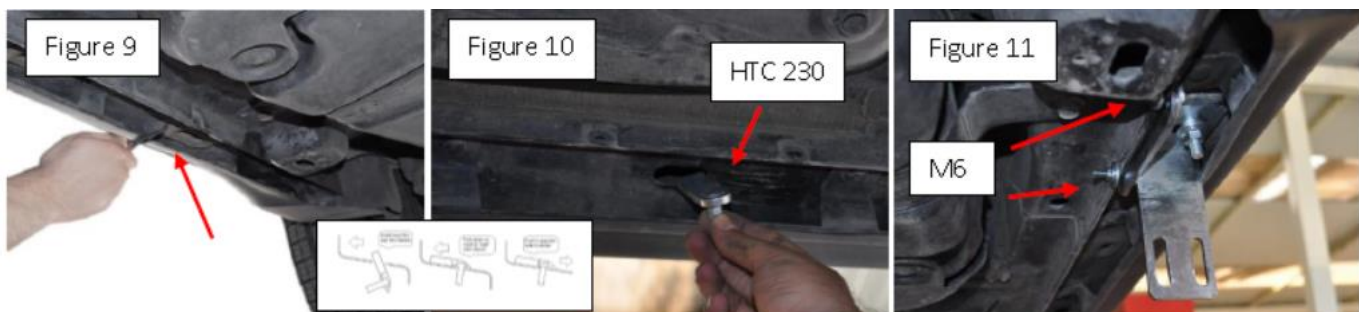
Step 9: Install bracket lower portion using supplied M10 hardware Figure 8.



Step 10: Locate rear bracket install and remove rubber plug #5 Figure 9.

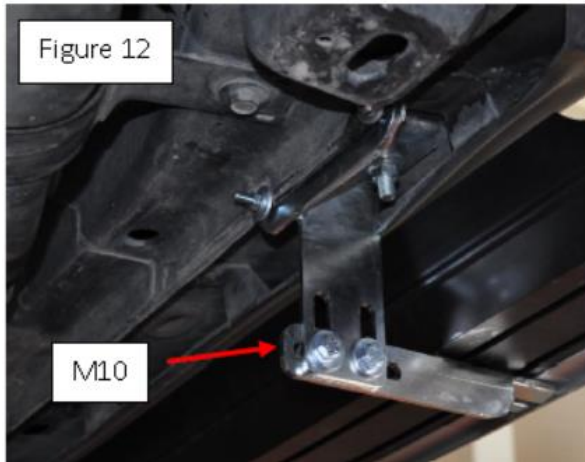
Step 11: Install supplied HTC 230 as shown Figure 10.

Step 12: Install bracket top part using supplied M6 hardware Figure 11.



Installation Instructions 2614 Bracket Kit

Step 13: Install bracket lower portion using supplied M10 hardware Figure 12.



Step 13: Proceed to the last page of this manual for running board install instructions and torque values.

NOTE: We recommend that you place a level on top of the running boards to assist you before finalizing the installation

For Technical support please call our team at 1-866-717-6645 and one of our experts will assist you with this installation.

Thank you for choosing Romik

Installation Instructions Running Boards

NOTE: Use of power tools will damage the bottom of the running board and void your warranty.

Step 1: loosen the M8 hardware on back of the running boards.

Step 2: Slide running board onto brackets

Step 3: Tighten hardware to 7 ft lbs.

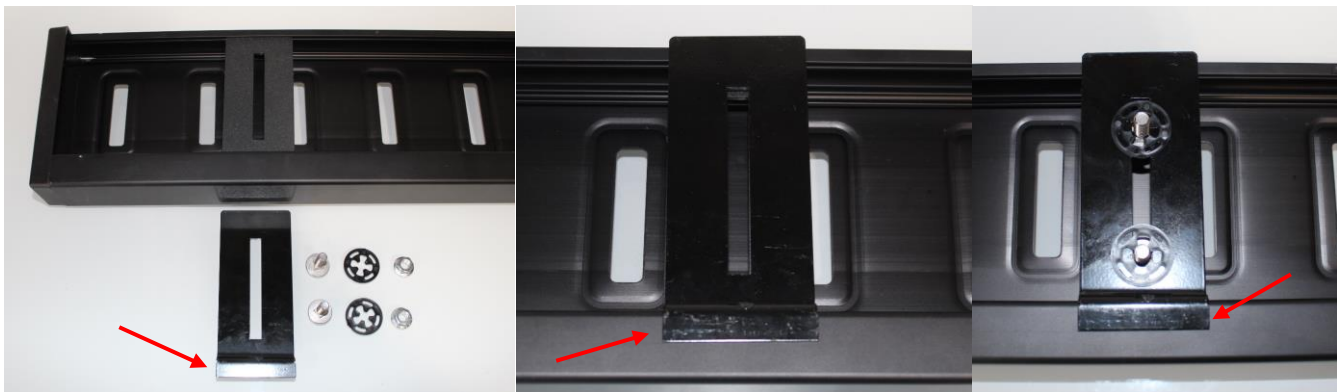


ROF/RPD/ROB Running boards

Step 1: Place clamping plate on top of running board as shown below. Make sure clamping plate sits correctly on running board surface.

Step 2: Install carriage bolts and plastic retaining clips as shown below.

Step 3: Install and tighten hardware to 7 ft lbs.



Product Registration and Warranty Information

- Register your Romik products at <https://romik.com/productregistration>
- Warranty information at <http://www.romik.com/warranty>

Cleaning and maintaining your Romik Running boards

Cleaning and maintaining your running boards is important, apply a light coat of a quality carnauba wax at least 2X per year. Wash often with mild soap and make sure to remove all soap residue. Many car automatic carwashes use a strong soap, make sure to use enough water to remove all residue.

For video instructions on how to clean your Romik products please click here <https://romik.com/cleaning>