



## Installation Instructions

Part No. **1014**

Product: Running Boards

Application: **Audi Q7 2017 - Present**

**Audi Q8 2019 - Present**

**Bentley Bentayga 2017 - Present**

Level of Difficulty: 1 2 3 4 **5**

Installation Time: 180 Min

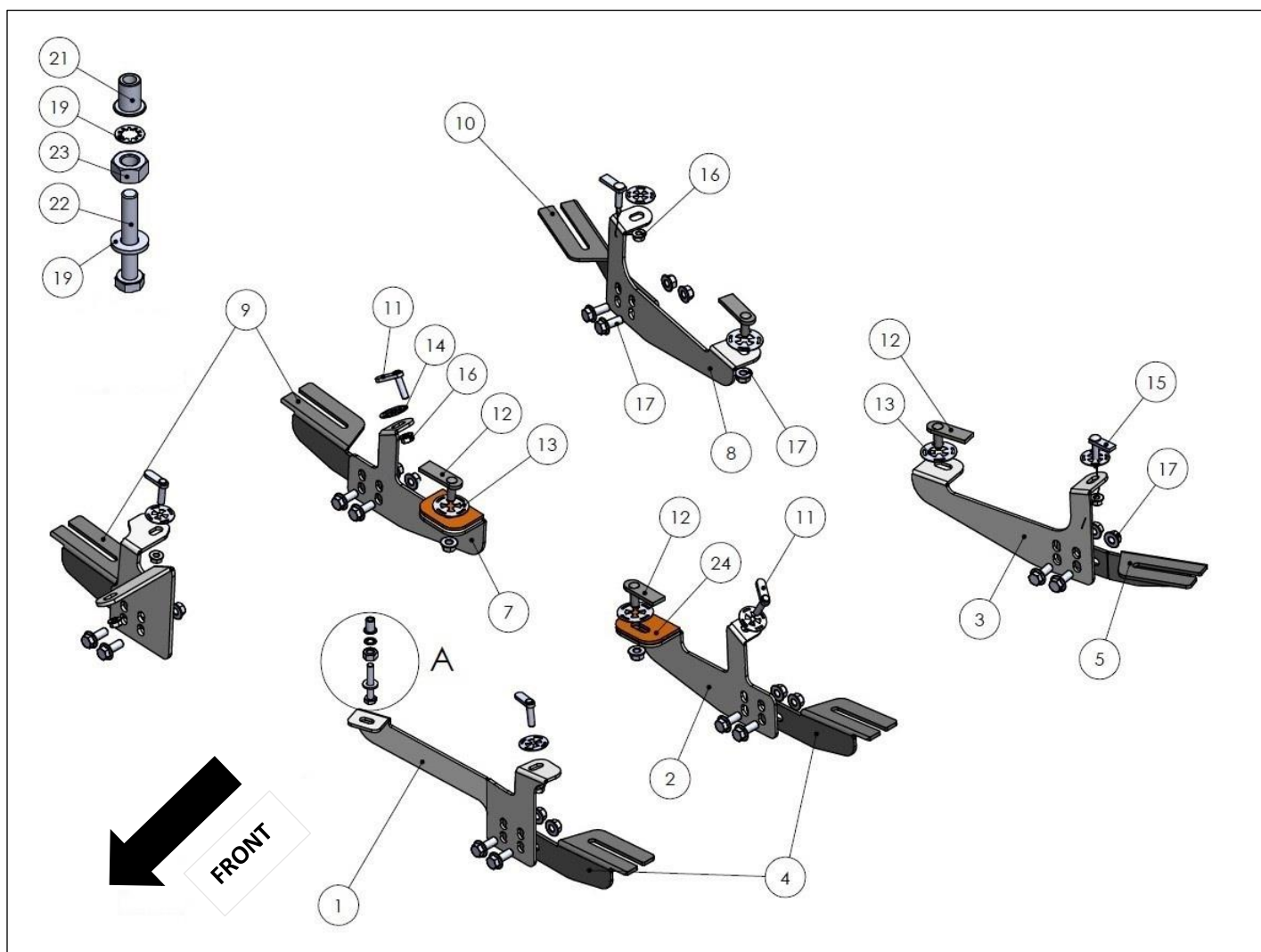
REV 6 04/01/23

| Hardware | Torque Aluminum | Torque Steel to Steel |
|----------|-----------------|-----------------------|
| M6 Bolt  | 3 ft-lbs.       | 14 ft-lbs.            |
| M8 Bolt  | 7 ft-lbs.       | 35 ft-lbs.            |
| M10 Bolt | 16 ft-lbs.      | 64 ft-lbs.            |
| M12 Bolt | 28 ft-lbs.      | 112 ft-lbs.           |

**ATTENTION:** Use correct torque settings to avoid damaging the running boards and or mounting brackets. Failure to do so will void your warranty. If you have any questions, please contact our technical team at 1-866-717-6645

Attention: Please make sure that you have the latest instructions  
from **Romik.com**

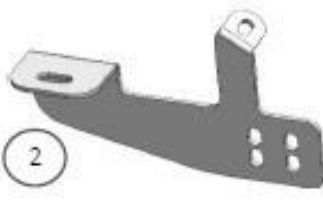
QR Scan





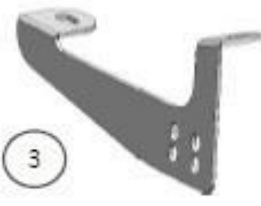
1

DRIVER SIDE SUPPORT  
FRONT BRACKET  
1 x QTY



2

DRIVER SIDE SUPPORT  
MIDDLE BRACKET  
1 x QTY



3

DRIVER SIDE SUPPORT  
REAR BRACKET  
1 x QTY



4

DRIVER SIDE  
FRONT/MIDDLE BRACKET  
2 x QTY



5

DRIVER SIDE  
REAR BRACKET  
1 x QTY



6

PASSENGER DRIVER SIDE  
SUPPORT FRONT BRACKET  
1 x QTY



7

PASSENGER SIDE SUPPORT  
MIDDLE BRACKET  
1 x QTY



8

PASSENGER SIDE  
SUPPORT REAR BRACKET  
1 x QTY



9

PASSENGER SIDE  
FRONT/MIDDLE BRACKET  
2 x QTY



10

PASSENGER SIDE  
REAR BRACKET  
1 x QTY

## HARDWARE



11

HTC 226 M8x30  
4x



12

HTC 230 - M10x25  
5x20x60  
4x



13

HTC 269  
CLIPS M10  
4x



14

HTC 271  
CLIPS M8  
6x



15

HTC 314  
PART  
2x



16

M8 FLANGE  
NUT  
7x



17

M10  
NUT  
1x



18

M10 FLANGE  
NUT  
16x



19

M10x25  
FLANGE BOLT  
12x



20

M8  
LOCK WASHER  
1x



21

M8  
WASHER  
1x



22

M8  
RIVET NUT  
1x



23

M8x50  
BOLT  
1x



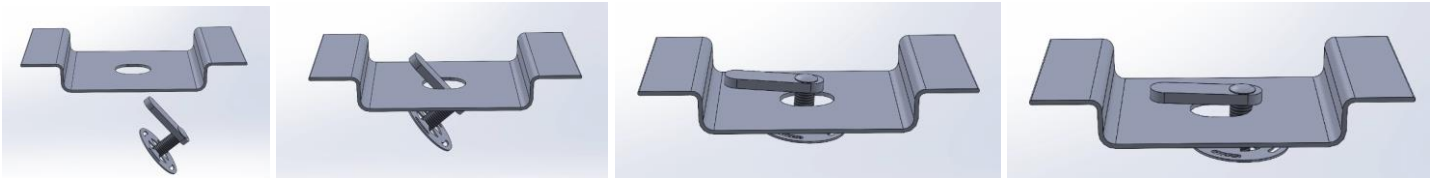
SPONGE  
2x

# Installation Instructions 1014 V2 Bracket

**NOTE: Due to complexity professional installation recommended.**

This vehicle requires undercarriage panel trimming.

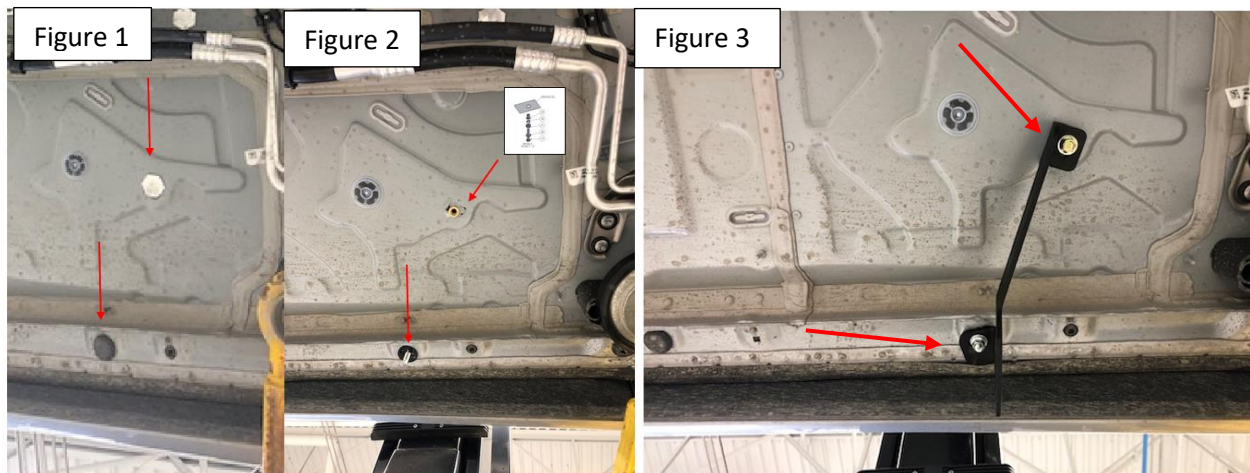
**Important Install Tip:** When installing Romik HTC inserts follow the sequence below. Make sure the HTC is seated correctly and do not use power tools as this will only spin the insert and possibly damage it. Test by tugging on it before installing bracket. **Blue loctite is highly recommended.**



**Step 1:** Remove plastic panels under vehicle, do not discard hardware as it will be re-used.

**Step 2:** Locate front Driver's mounting locations and hardware as per 1<sup>st</sup> page of this installation manual

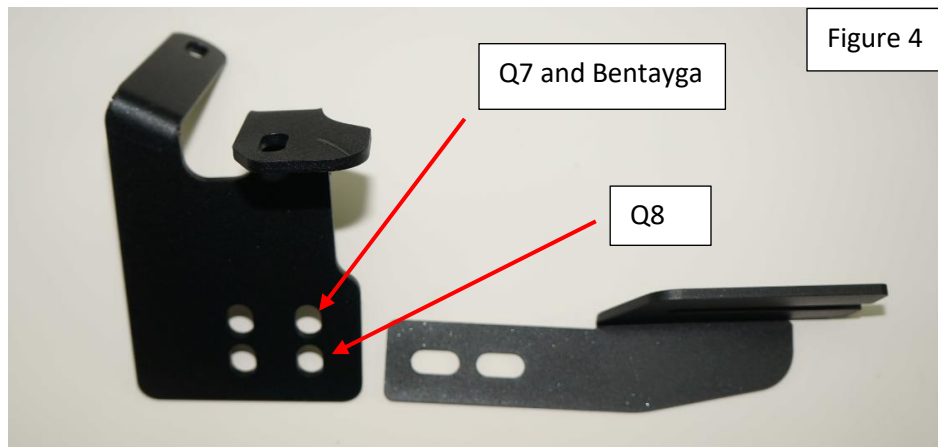
Note: Q7 and Bentayga use different bracket position than Q8 this will be explained in manual. Remove tape and rubber plug as shown on Figure 1. Install provided 8mm Rivet nut as shown on Figure 2. Once Rivet nut is installed proceed to install front bracket as shown on Figure 3.



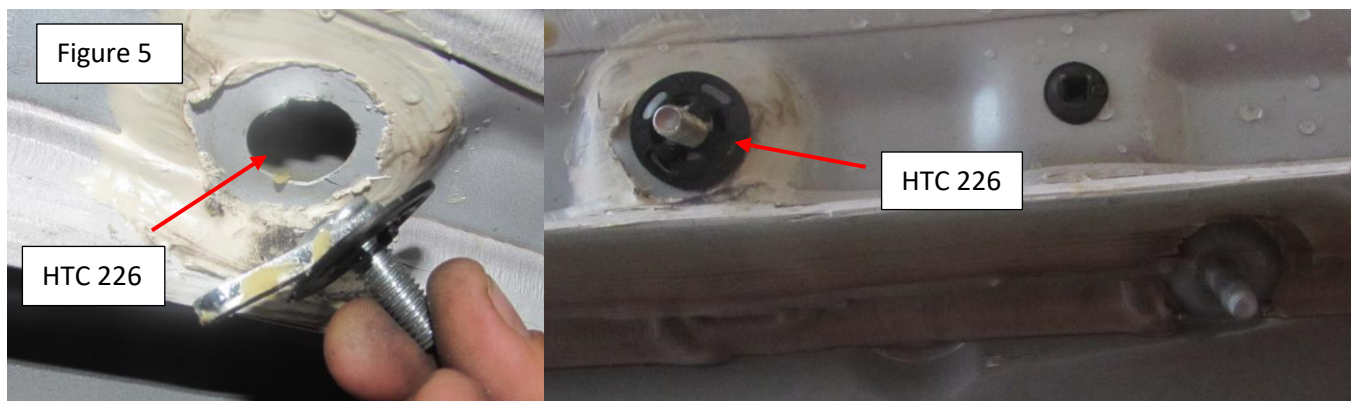


# Installation Instructions 1014 Bracket

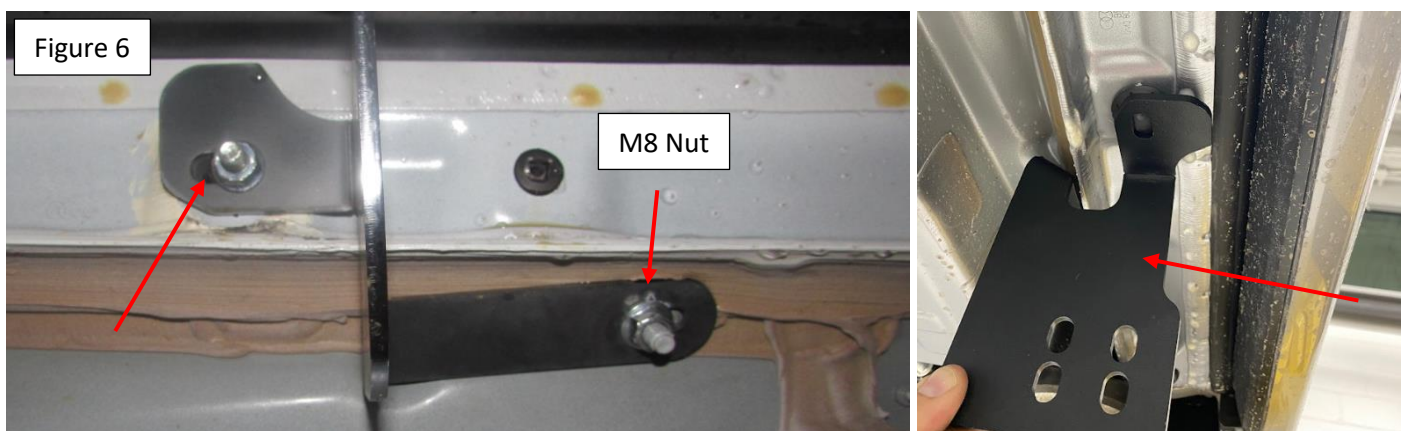
**Step 3:** Locate front Passenger's side mounting locations and hardware as per 1<sup>st</sup> page of this installation manual Figure 4



**Step 4:** Remove factory rubber plug as shown below and Install HTC 226 with HTC 271 as shown on Figure 5



**Step 5:** Install front bracket as shown of Figure 6 factory stud uses an 8mm nut. Do not tighten.

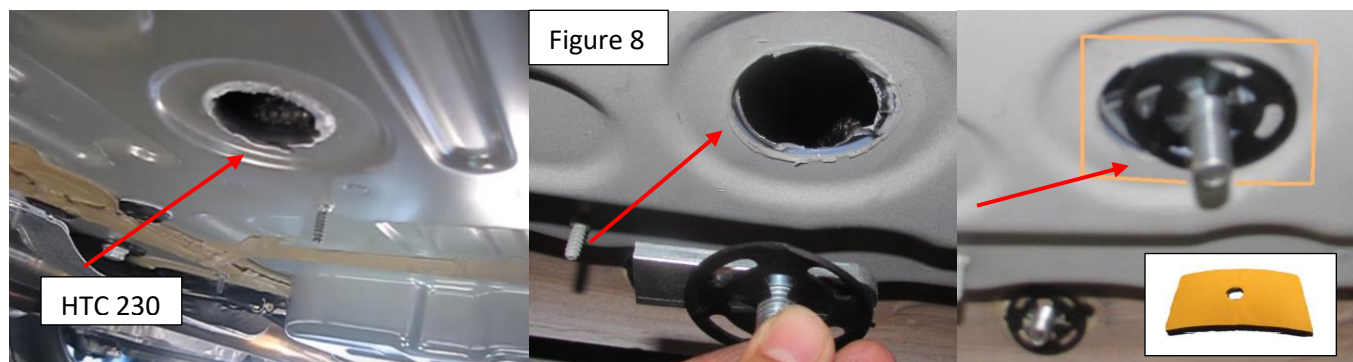


# Installation Instructions 1014 Bracket

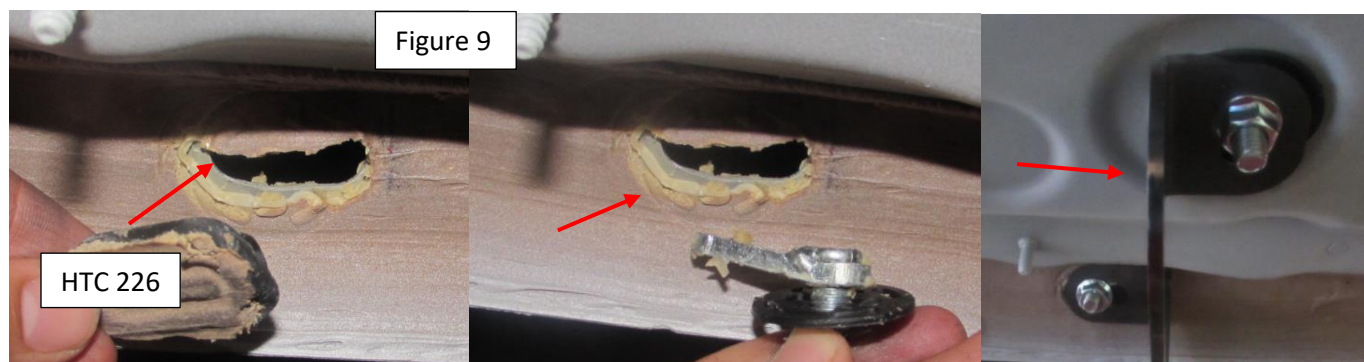
**Step 6:** Locate middle bracket location, remove factory plugs Figure 7



**Step 7:** Install provided HTC 230 as shown Figure 8. Make sure to use provided sealant sponge.

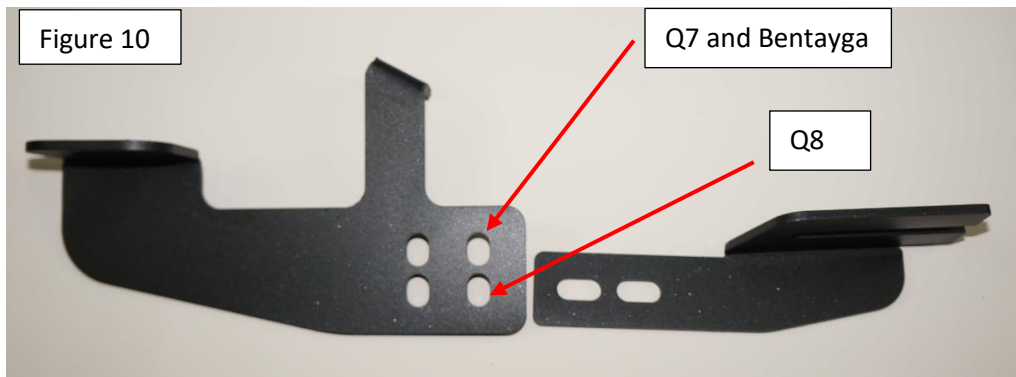


**Step 8:** Install provided HTC 226 as shown Figure 9. Make sure to use provided sealant sponge.





# Installation Instructions 1014 Bracket



**Step 9:** Locate rear bracket location and hardware Remove rubber plug **NOTE** Please pay attention to outer hole insert location. Figure 11 assemble special hardware as shown and insert into 2<sup>nd</sup> level.



**Step 10:** Remove rubber plug inner location and install HTC 230 as shown on Figure 12

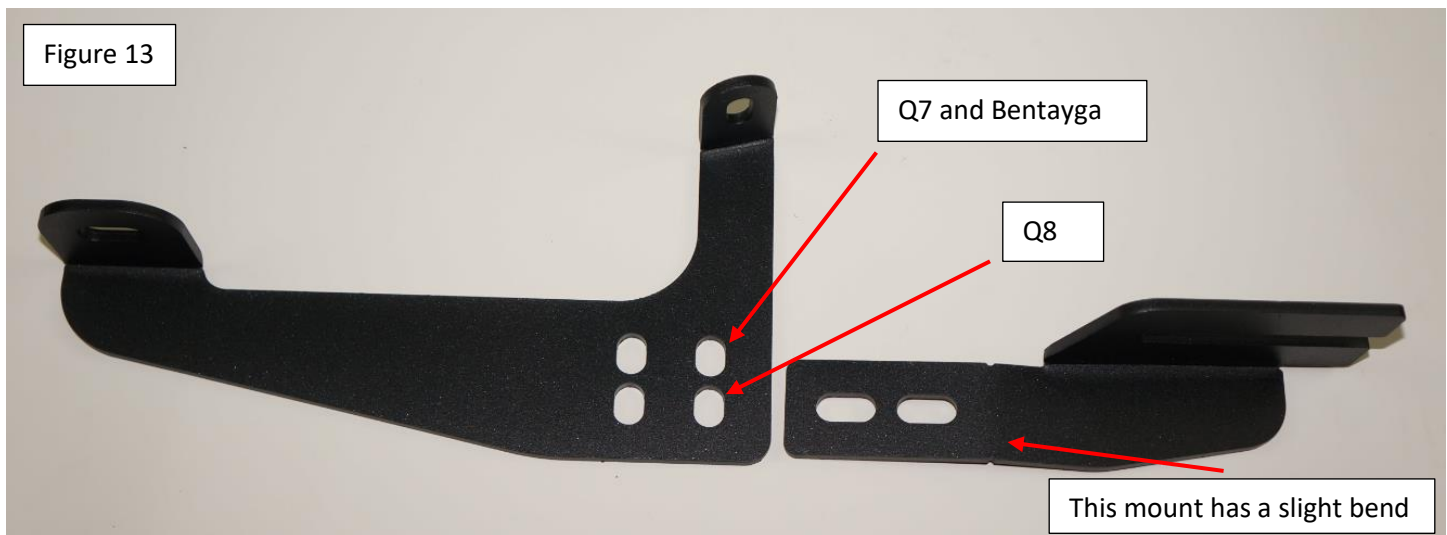


**Step 11:** Install rear bracket as shown on figure 12. Do not tighten



# Installation Instructions 1014 Bracket

**Step 12:** Install running board base onto bracket using supplied M10 hardware Figure 13. Do not tighten



**Step 13:** Torque bracket to body according to the chart on first page. Note torque connecting brackets 64 ft lbs. and proceed to last page of this manual for running board install instructions and torque values. Use of a level is recommended.

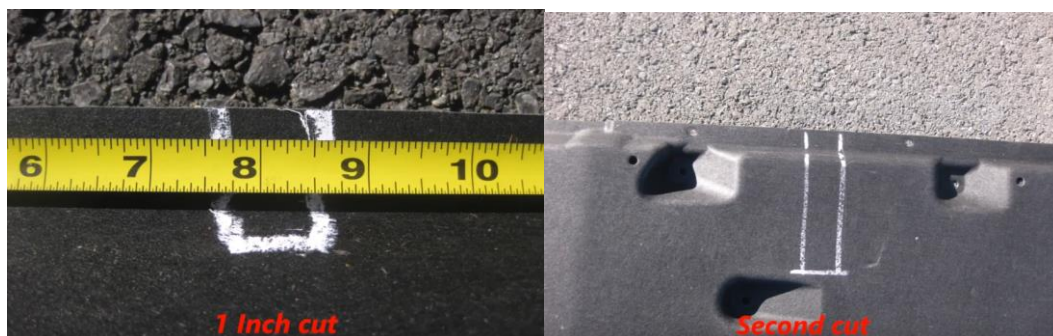
**Step 14:** After securing running boards proceed to trim plastic panels as needed. Due to the various models it is recommended that you bring the panel to position and trim as needed.

Review trimming sample minute 3:40 <https://www.youtube.com/watch?v=nSDDGNUFhol>





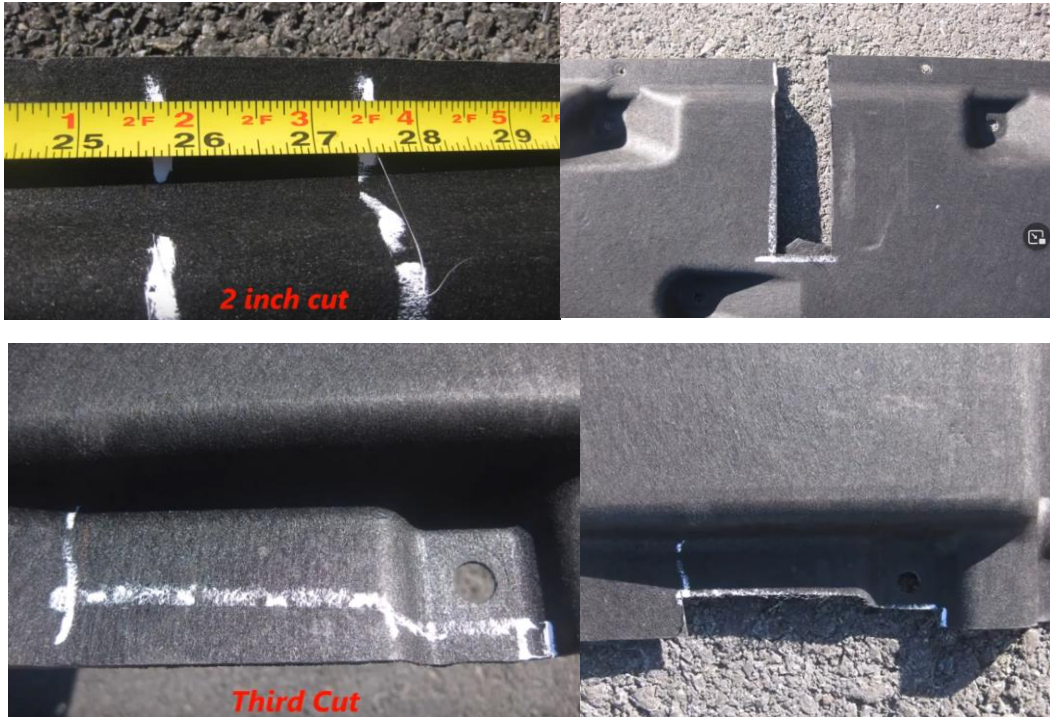
# Installation Instructions 1014 Bracket





## Installation Instructions 1014 Bracket

---



For Technical support please call our team at 1-866-717-6645 and one of our experts will assist you with this installation

***Thank you for choosing Romik.***

# Installation Instructions Running Boards

**NOTE: Use of power tools will damage the bottom of the running board and void your warranty.**

**Step 1: loosen the M8 hardware on back of the running boards.**

**Step 2: Slide running board onto brackets**

**Step 3: Tighten hardware to 7 ft lbs.**



## ROF/RPD/ROB Running boards

**Step 1: Place clamping plate on top of running board as shown below. Make sure clamping plate sits correctly on running board surface.**

**Step 2: Install carriage bolts and plastic retaining clips as shown below.**

**Step 3: Install and tighten hardware to 7 ft lbs.**



## Product Registration and Warranty Information

- Register your Romik products at <https://romik.com/productregistration>
- Warranty information at <http://www.romik.com/warranty>

## Cleaning and maintaining your Romik Running boards

Cleaning and maintaining your running boards is important, apply a light coat of a quality carnauba wax at least 2X per year. Wash often with mild soap and make sure to remove all soap residue. Many car automatic carwashes use a strong soap, make sure to use enough water to remove all residue.

For video instructions on how to clean your Romik products please click here <https://romik.com/cleaning>